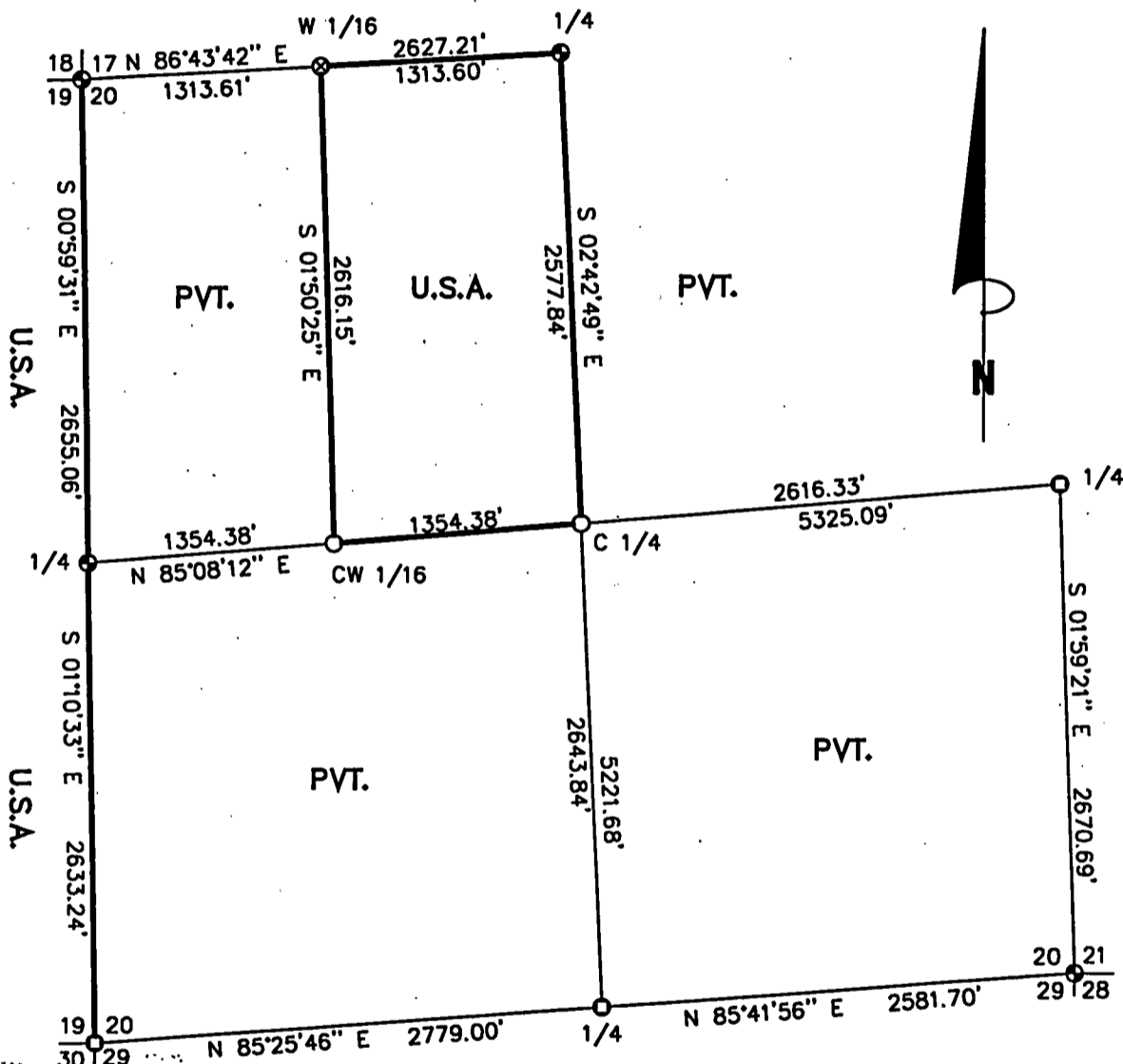
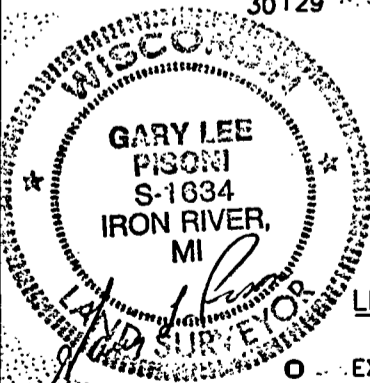


PLAT OF SURVEY U.S. GOVERNMENT LANDS

Being the E 1/2 of the NW 1/4; Section 20; the West boundary line of Section 20, Township 38 North, Range 14 East, Fourth Principal Meridian, Forest County, Wisconsin



Scale 1" = 1000'



LEGEND

- EXISTING 2" DIAMETER IRON PIPE WITH BRASS CAP STAMPED FOR CORNER.
- ⊕ EXISTING 2 1/2" DIAMETER ALUMINUM MONUMENT WITH CAP STAMPED FOR CORNER.
- 1"X36" ALUMINUM MONUMENT WITH CAP STAMPED FOR CORNER, SET THIS SURVEY
- ⊗ 1"X60" ALUMINUM MONUMENT WITH CAP STAMPED FOR CORNER, SET THIS SURVEY
- MARKED BOUNDARY LINES OF U.S. GOVERNMENT LANDS.

FOREST CO SURVEYOR
 FILE # 381420-19990216
 DATE _____ BY _____

SURVEY NOTES

This survey was made by Gary L. Pisoni of Iron River, Michigan under contract with the U.S. Department of Agriculture, Forest Service for the purpose of establishing subdivisional corners within and along the perimeter of Section 20, and for locating and marking the boundaries of the U.S. Government lands on their perimeter and within Section 20, Township 38 North, Range 14 East, 4th Principal Meridian, Forest County, WI.

This survey is based on U.S.D.A., U.S. Forest Service GPS survey control completed in 1998 and the resulting sectional subdivision therefrom.

The U.S. Government lands in Section 20 were acquired in 1935.

The original township line survey was completed by Alfred Millard in 1858.
The original township subdivision was completed by James L. Nowlin in 1865.

The corner positions recovered, restored, and established by this survey are marked by the monuments described in the plat legend.

The corner positions established were located to an accuracy of one part in 3000.

The field notes and a copy of this plat are on file in the Forest Supervisor's office at Rhinelander, WI.

Wisconsin North Zone Coordinates were computed by the U.S.D.A. from GPS observations and are based on 1983 North American datum.

The bearings between corner positions are grid bearings based on the Wisconsin North Zone State Plane Coordinate System.

Conversions between grid bearings and true bearings are performed by the use of the following algebraic formula: True bearings - Convergence angle = Grid bearing. (Close attention to the algebraic sign must be observed, ie: +/- of the convergence angle).

Ground distances are shown on the Plat map. Conversion between Ground distance and Grid distance is performed by the following formula:

$$\text{Grid distance} / (\text{Grid Scale Factor} \times (20,906,000 / (20,906,000 + \text{Mean Elev.}))) = \text{Ground Distance}$$

COORDINATE VALUES ON 1983 N.A.D.

<u>Corner Code</u>	<u>North Latitude</u>	<u>West Longitude</u>	<u>State Plane Coordinates</u>		<u>Convergence Angle</u>	<u>Scale Factor</u>
			<u>North</u>	<u>East</u>		
SW	45-45'-05.18"	88-46'-45.15"	215628.661	2280122.463	00-52'-50.32"	0.999971593
S 1/4	45-45'-06.95"	88-46'-06.04"	215850.088	2282892.336	00-53'-18.53"	0.999971531
W 1/4	45-45'-31.18"	88-46'-45.34"	218261.075	2280068.439	00-52'-50.18"	0.999970691
E 1/4	45-45'-34.82"	88-45'-30.42"	218712.489	2285373.804	00-53'-44.22"	0.999970566
N 1/4	45-45'-58.47"	88-46'-08.39"	221065.380	2282645.136	00-53'-16.84"	0.999969762
SE	45-45'-08.46"	88-45'-29.70"	216043.691	2285466.499	00-53'-44.74"	0.999971478
NW	45-45'-57.39"	88-46'-45.41"	220915.456	2280022.474	00-52'-50.13"	0.999969798
C 1/4	45-45'-33.03"	88-46'-07.23"	218490.698	2282767.168	00-53'-17.67"	0.999970627
W 1/16	45-45'-57.93"	88-46'-26.90"	220990.416	2281333.803	00-53'-03.48"	0.999969780
CW 1/16	45-45'-32.11"	88-46'-26.28"	218375.886	2281417.803	00-53'-03.93"	0.999970659

CORNERS RECOVERED OR RESTORED

- 1) Section corner common to Sections 17, 18, 19, 20, T38N, R14E.
Corner found monumented by Milo Stefan, RLS. Certificate on file in Forest County.
- 2) Quarter corner common to Sections 17 and 20, T38N, R14E.
Corner found monumented by Milo Stefan, RLS. Certificate on file in Forest County.
- 3) Quarter corner common to Sections 19 and 20, T38N, R14E.
Corner found monumented by Milo Stefan, RLS. Certificate on file in Forest County.
- 4) Quarter corner common to Sections 20 and 21, T38N, R14E.
Corner found monumented by Jean Resvick, RLS. Certificate on file in Forest County.
- 5) Section corner common to Sections 19, 20, 29, 30, T38N, R14E.
Corner found monumented by Jean Resvick, RLS. Certificate on file in Forest County.
- 6) Quarter corner common to Sections 20 and 29, T38N, R14E.
Corner found monumented by Jean Resvick, RLS. Certificate on file in Forest County.
- 7) Section corner common to Sections 20, 21, 28, 29, T38N, R14E.
Corner found monumented by John Fisher, RLS. Certificate by Alan Harrison on file in Forest County.

CORNERS ESTABLISHED

- 1) West One-Sixteenth Corner to Sections 17 and 20.
Corner position established midpoint and on line between the northwest corner and the North quarter corner of Section 20.
Corner References:

Cedar	12"	N 71° E	11.00 feet
Black Ash	5"	S 40° E	8.52 feet
Black Ash	5"	S 32° W	23.21 feet
Steel sign post		South	0.75 feet

- 2) Center One-Quarter Corner to Section 20
Corner established at the intersection of straight lines between opposing one-quarter corner positions on the perimeter of Section 20.
Corner References:

Sugar Maple	8"	N 48° W	23.43 feet
Sugar Maple	8"	N 87° E	29.57 feet
Red Maple	11"	S 37° W	13.16 feet
Steel sign post		West	0.85 feet

- 3) Center West One-Sixteenth Corner to Section 20.
Corner position established midpoint and on line between the center quarter corner and the West quarter corner of Section 20.
Corner References:

Yellow Birch	12"	S 16° W	28.86 feet
Hemlock	11"	S 88° W	23.66 feet
Hemlock	8"	N 10° W	35.08 feet
Steel sign post		East	0.80 feet

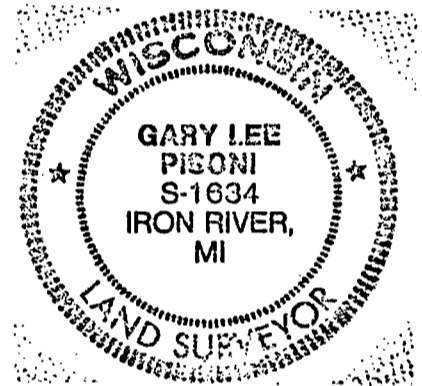
SURVEYOR'S AFFIDAVIT

State of Wisconsin]
County of Forest] SS

I, Gary L. Pisoni, a Registered Land Surveyor in the State of Wisconsin, do hereby certify that I have surveyed and subdivided Section 20, Township 38 North, Range 14 East, Fourth Principal Meridian, Forest County, Wisconsin under contract with the U.S.D.A. Forest Service using the section dimensions and subdivision data as provided by the Forest Service.

The Plat Map and notes herewith are a correct representation of the land surveyed and subdivided. I have surveyed and subdivided said section in accordance with the rules for survey of the public lands and with the statutes of the State of Wisconsin.

Gary L. Pisoni 2-16-99
Gary L. Pisoni R.L.S. No. S-1634
Iron River, Michigan



Plat ready for filing:

[Signature] 3-18-1999
District Ranger

