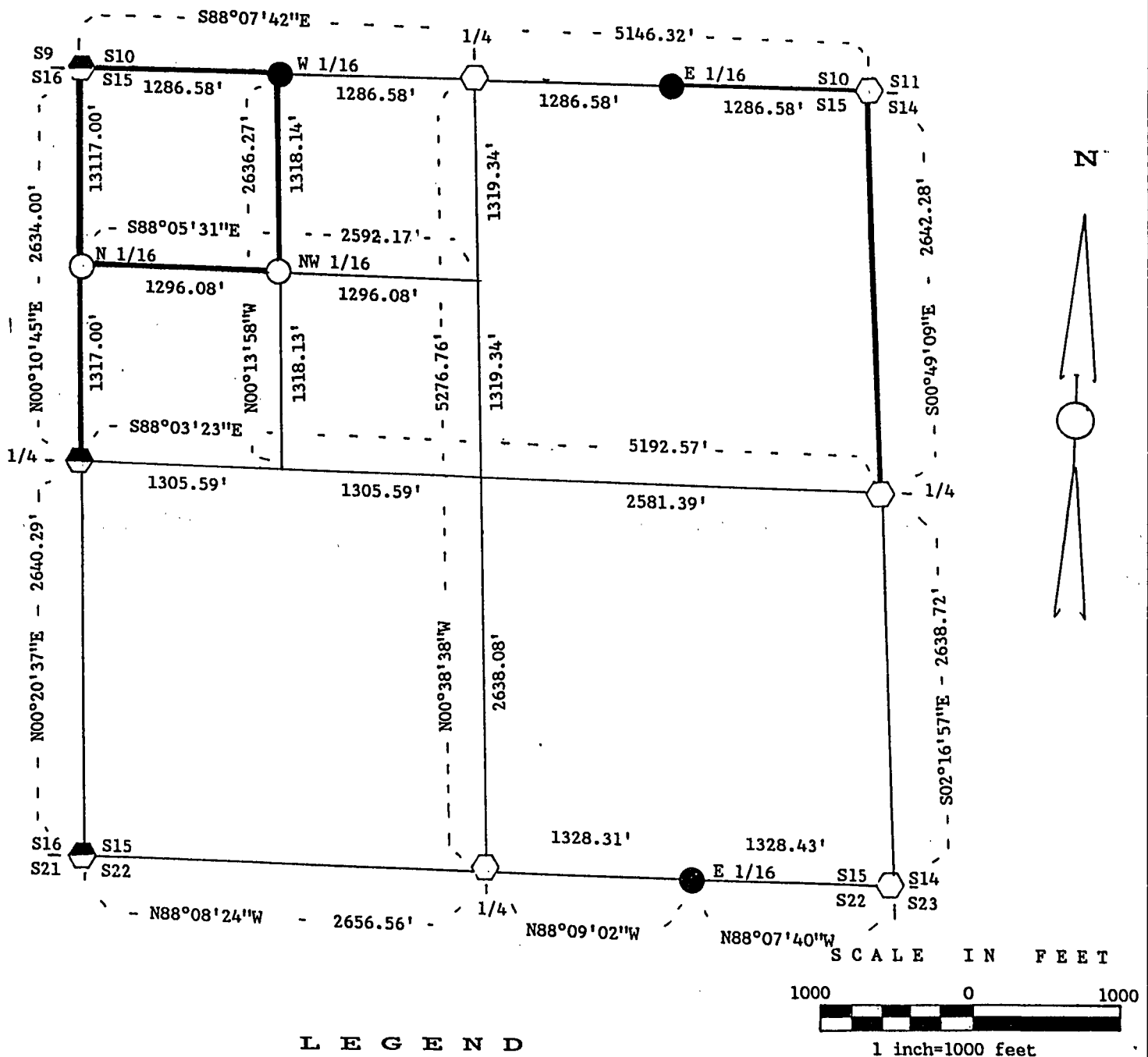


FOREST CO SURVEYOR  
 FILE # 381415-1988/003  
 DATE \_\_\_\_\_ BY \_\_\_\_\_

PLAT OF SURVEY FOR CERTIFIED LAND CORNER  
 RESTORATION AND ESTABLISHMENT  
 OF U.S. GOVERNMENT LAND

BEING THE CORNERS FOR THE E 1/2 OF THE NW 1/4,  
 THE SW 1/4 OF THE NW 1/4, THE NE 1/4, THE SW 1/4 AND THE SE 1/4.  
 SECTION 15, T38N, R14E, FOURTH PRINCIPAL MERIDIAN  
 FOREST COUNTY, STATE OF WISCONSIN



L E G E N D

- Boundary line marked to standard.
- 1" diameter aluminum pipe monument, 36" long with an aluminum cap stamped to identify the corner.
- 1" diameter aluminum pipe monument, 60" long with an aluminum cap stamped to identify the corner.
- ⬡ 2 1/2" diameter aluminum pipe monument, 36" long with an aluminum cap stamped to identify the corner.
- ⬢ 2 1/2" diameter aluminum pipe monument, 60" long with an aluminum cap stamped to identify the corner.
- ⬤ 2" diameter galvanized iron pipe monument filled with concrete, 60" long with a brass cap stamped to identify the corner.

NOTE: Bearings are referenced to surveys by John H. Fisher (S-836) of Sections 22 and 23, dated 1986 and Section 35, T39N, R14E by Wm. Cochrane (S-1107) dated 1988.

## SURVEY NOTES

This survey was made by John C. Schulke, a Registered Land Surveyor in the State of Wisconsin, for the U.S. Department of Agriculture, Forest Service. The purpose of the survey was for recovery, establishing, marking and perpetuating the corners and boundary lines of the U.S. Government Land on the perimeter and within Section 15, Township 38 North, Range 14 East, Fourth Principal Meridian, Forest County, Wisconsin.

The Original Government Survey of the township boundary was done by Artemas Curtis in 1857. The Original Government Subdivision survey of this township was done by J.L. Nowlin in 1865.

The bearings between corner positions are true bearings as referenced to adjoining surveys of Sections 22 and 23, Township 38 North, Range 14 East by John H. Fisher (RLS-836) dated in 1986 and Section 35 Township 39 North, Range 14 East by Wm. Cochrane (RLS-1107) dated in 1988. A mapping angle correction was applied to Section 35 to convert from State Plane Grid to true bearing.

The accuracy of this survey exceeds the State requirement for closure of 1 in 3,000. Corners recovered or reestablished by this survey are marked as described in the map legend. Each monumented corner is referenced to blazed, scribed, painted, and tagged bearing trees. Tie bearings are magnetic, and corrected for declination.

CORNERS RECOVERED AND RESTORED

1. Section Corner Common to Sections 9, 10, 15 and 16.  
Recovered corner monument in place and was stamped by Robert Bandow (RLS-104) in 1959.

## Recovered corner references:

Cedar	16"	N49°W	38.35 feet
Hemlock (dead)	22"	S58°W	9.2 feet
Maple stump	12"	S36°E	47.9 feet

## Corner references:

Red Maple	10"	N08°E	24.48 feet
Sugar Maple	10"	S69°E	31.09 feet
Red Maple	12"	S17°W	25.00 feet
Twin Red Maple	10"	N23°W	57.18 feet
Steel sign post		NW	1.0 feet

2. Quarter Corner Between Sections 10 and 15.  
Restored by proportionate measurement.

## Corner references:

Cedar	14"	N16°E	20.14 feet
Yellow Birch	5"	N66°E	26.89 feet
Hemlock	16"	S82°W	16.09 feet
Steel sign post		West	1.0 feet

3. Section Corner Common to Sections 10, 11, 14 and 15.  
Restored by proportionate measurement.

## Corner references:

Balsam	8"	N58°E	20.94 feet
Twin Cherry	7"	S53°E	35.97 feet
Birch	12"	S61°W	20.68 feet
Balsam	14"	N11°W	34.31 feet
Steel sign post		SW	0.7 feet

4. Quarter Corner Between Sections 14 and 15.  
Recovered wooden square post.

## Corner references:

Sugar Maple	12"	N41°W	47.37 feet
Sugar Maple	12"	S87°E	43.57 feet
Sugar Maple	14"	S33°E	28.34 feet
Sugar Maple	12"	S62°W	39.39 feet
Steel sign post		West	1.0 feet

5. Section Corner Common To Sections 14, 15, 22 and 23.  
Corner monument recovered in place and as described on a U.S. Public Land Survey Monument Record form filed in the Forest County Register of Deeds Office, Document #131255, in Oct. 1986 by Alan Harrison (RLS-1651).
6. Quarter Corner Between Sections 15 and 22.  
Corner monument recovered in place and as described on a U.S. Public Land Survey Monument Record form filed in the Forest County Register of Deeds Office, Document #131452, in Nov. 1986 by John Fisher (RLS-836).
7. Section Corner Common to Sections 15, 16, 21 and 22.  
Corner monument recovered in place and as described on a U.S. Public Land Survey Monument Record form filed in the Forest County Register of Deeds office, Document #131460, in Nov. 1986 by John Fisher (RLS-836).
8. Quarter Corner Between Sections 15 and 16.  
Corner monument recovered in place and was stamped by J. Resvick in 1969.

## Recovered corner references:

Black Spruce	7"	N30°E	13.84 feet
--------------	----	-------	------------

## Corner references:

Black Spruce	6"	S65°E	22.04 feet
Black Spruce	4"	S84°W	22.25 feet
Black Spruce	5"	N17°W	35.93 feet
Steel sign post		SE	1.0 feet

9. East Sixteenth Corner Between Sections 15 and 22.  
Recovered corner monument in place and as described on a Plat of Survey sheet filed in the Forest County Clerk Office in Nov. 1986 by John Fisher (RLS-836).

CORNERS ESTABLISHED

1. West Sixteenth Corner Between Sections 10 and 15.  
Corner position is established at the midpoint and on line between the North Quarter Corner and the Northwest Section Corner of Section 15.

## Corner references:

Cedar	6"	N15°W	34.53 feet
Red Maple	5"	N81°E	26.70 feet
Twin Red Maple	4"	S57°W	10.08 feet
Cedar	9"	S59°E	29.67 feet
Steel sign post		East	1.0 feet

2. East Sixteenth Corner Between Sections 10 and 15.  
 Corner position is established at the midpoint and on line between the North Quarter corner and the Northeast Section corner of Section 15.

Corner references:

Cedar	14"	S25°W	33.46 feet
Black Cherry	5"	S84°W	34.18 feet
Steel sign post		South	0.7 feet

3. North Sixteenth Corner Between Sections 15 and 16.  
 Corner position is established at the midpoint and on line between the West Quarter corner and the Northwest Section corner of Section 15.

Corner references:

Sugar Maple	10"	N46°W	25.93 feet
Sugar Maple	5"	S40°E	35.40 feet
Hemlock	15"	S30°W	52.08 feet
Steel sign post		SE	0.7 feet

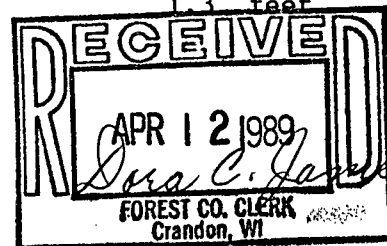
4. Northwest Sixteenth Corner of Section 15.  
 Corner position is at the intersection of a straight lines between opposing sixteenth corners on the perimeter of the Northwest Quarter of Section 15.

Corner references:

Sugar Maple	10"	N36°E	14.40 feet
Sugar Maple	7"	S87°W	20.43 feet
Steel sign post		East	1.3 feet

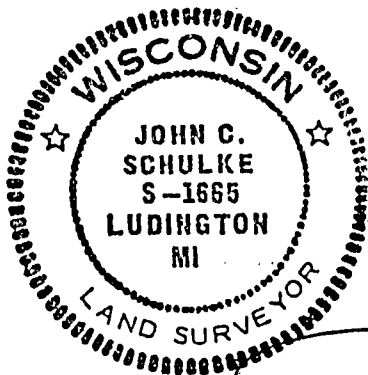
SURVEYOR'S AFFIDAVIT

State of Wisconsin)  
 County of Forest )ss



I, John C. Schulke, a Cadastral Surveyor, and a Registered Land Surveyor in the State of Wisconsin, hereby certify that I have surveyed and subdivided Section 15, Township 38 North, Range 14 East, Fourth Principal Meridian, State of Wisconsin.

The plat map and survey notes herewith are a correct representation of the land surveyed and subdivided. I have surveyed and subdivided said section in accordance with the rules for the survey of the public lands and with the statutes of the State of Wisconsin.



John Schulke  
 4604 So. Pere Marquette Rd.  
 Ludington, MI 49431  
 R.L.S. State of Wisconsin  
 Date of Survey 1988  
 Certificate S-1665

*John C Schulke*

Oct. 3rd, 1988

Survey requested by:

*David Boyer*  
 District Ranger

10-25-88  
 Date