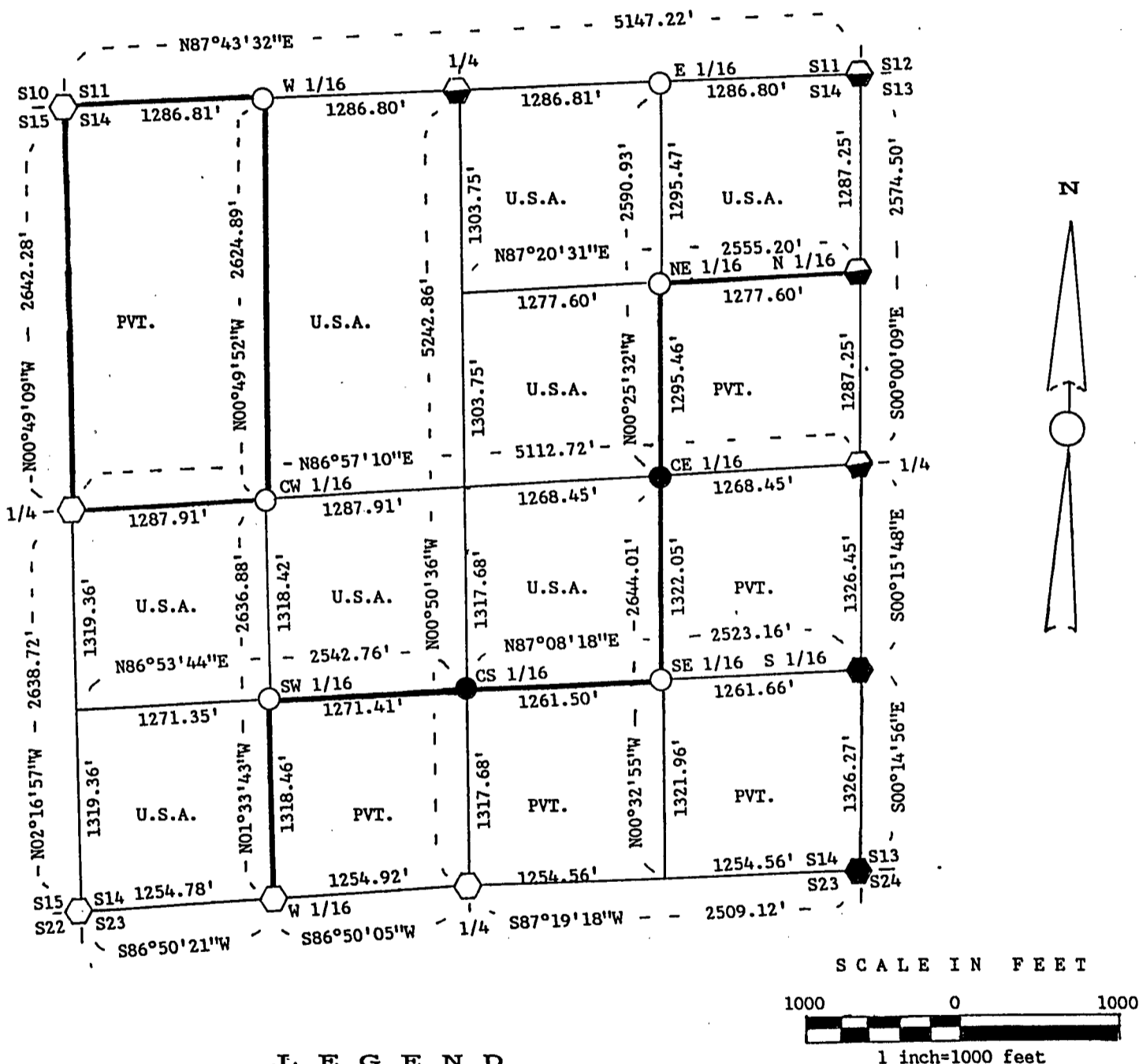


FOREST CO SURVEYOR  
 FILE # 384/4-19881003  
 DATE \_\_\_\_\_ BY \_\_\_\_\_

PLAT OF SURVEY FOR CERTIFIED LAND CORNER  
 RESTORATION AND ESTABLISHMENT  
 OF U.S. GOVERNMENT LAND

BEING THE CORNERS FOR THE W 1/2 OF THE NW 1/4, THE N 1/2 OF THE NE 1/4,  
 THE SW 1/4 OF THE NE 1/4, THE N 1/2 OF THE SW 1/4,  
 THE SW 1/4 OF THE SW 1/4 AND THE NW 1/4 OF THE SE 1/4.  
 SECTION 14, T38N, R14E, FOURTH PRINCIPAL MERIDIAN  
 FOREST COUNTY, STATE OF WISCONSIN.



L E G E N D

- | Boundary line marked to standard.
- 1" diameter aluminum pipe monument, 36" long with an aluminum cap stamped to identify the corner.
- 1" diameter aluminum pipe monument, 60" long with an aluminum cap stamped to identify the corner.
- ⬡ 2 1/2" diameter aluminum pipe monument, 36" long with an aluminum cap stamped to identify the corner.
- ◊ 2 1/2" diameter aluminum pipe monument, 36" long with an aluminum cap stamped to identify the corner, buried in the road.
- ◆ 2 1/2" diameter aluminum pipe monument, 60" long with an aluminum cap stamped to identify the corner.

NOTE: Bearings are referenced to surveys by John H. Fisher (S-836) of Sections 22 and 23, dated 1986 and Section 35, T39N, R14E by Wm. Cochrane (S-1107) dated 1986.

## SURVEY NOTES

This survey was made by John C. Schulke, a Registered Land Surveyor in the State of Wisconsin, for the U.S. Department of Agriculture, Forest Service. The purpose of the survey was for recovery, establishing, marking and perpetuating the corners and boundary lines of the U.S. Government Land on the perimeter and within Section 14, Township 38 North, Range 14 East, Fourth Principal Meridian, Forest County, Wisconsin.

The Original Government Survey of the township boundary was done by Artemas Curtis in 1857. The Original Government Subdivision survey of this township was done by J.L. Nowlin in 1865.

The bearings between corner positions are true bearings as referenced to adjoining surveys of Sections 22 and 23, Township 38 North, Range 14 East by John H. Fisher (RLS-836) dated in 1986 and Section 35 Township 39 North, Range 14 East by Wm. Cochrane (RLS-1107) dated in 1988. A mapping angle correction was applied to Section 35 to convert from State Plane Grid to true bearing.

The accuracy of this survey exceeds the State requirement for closure of 1 in 3,000. Corners recovered or reestablished by this survey are marked as described in the map legend. Each monumented corner is referenced to blazed, scribed, painted, and tagged bearing trees. Tie bearings are magnetic, and corrected for declination.

CORNERS RECOVERED AND RESTORED

1. Section Corner Common to Sections 10, 11, 14 and 15.  
Restored by proportionate measurement.

## Corner references:

Balsam	8"	N58°E	20.94 feet
Twin Cherry	7"	S53°E	35.97 feet
Birch	12"	S61°W	20.68 feet
Balsam	14"	N11°W	34.31 feet
Steel sign post		SW	0.7 feet

2. Quarter Corner Between Sections 11 and 14.  
Restored by proportionate measurement. Monument is 0.5 feet below the surface of the road and the center of the road is 3 feet North.

## Corner references:

Red Maple	10"	N15°E	20.00 feet
White Ash	8"	S75°E	32.70 feet
Red Maple	16"	S35°W	36.57 feet
White Ash	10"	N55°W	42.65 feet
Steel sign post		South	19.4 feet

3. Section Corner Common to Sections 11, 12, 13 and 14.  
Corner monument recovered in place and as described on a U.S. Public Land Survey Monument Record form filed in the Forest County Register of Deeds Office, Document #127894, in April 1985 by Wm. Cochrane (RLS-1107).
4. Quarter Corner Between Sections 13 and 14.  
Corner monument recovered in place and as described on a Certified Land Corner Restoration form filed in the Forest County Register of Deeds Office, Document #124406, in October 1983 by Wm. Cochrane (RLS-1107).
5. Section Corner Common to Sections 13, 14, 23 and 24.  
Corner monument recovered in place and as described on a Certified Land Corner Restoration form filed in the Forest County Register of Deeds Office, Document #124408, in October 1983 by Wm. Cochrane (RLS-1107).

6. Quarter Corner Between Sections 14 and 23.  
Corner monument recovered in place and as described on a U.S. Public Land Survey Monument Record form filed in the Forest County Register of Deeds Office, Document #131461, in Nov. 1986 by John Fisher (RLS-836).
7. Section Corner Common to Sections 14, 15, 22 and 23.  
Corner monument recovered in place and as described on a U.S. Public Land Survey Monument Record form filed in the Forest County Register of Deeds Office, Document #131255, in Oct. 1986 by Alan Harrison (RLS-1651).
8. Quarter Corner Between Sections 14 and 15.  
Recovered wooden square post.

Corner reference:

Sugar Maple	12"	N41°W	47.37 feet
Sugar Maple	12"	S87°E	43.57 feet
Sugar Maple	14"	S33°E	28.34 feet
Sugar Maple	12"	S62°W	39.39 feet
Steel sign post		West	1.0 feet

9. North Sixteenth Corner Between Sections 13 and 14.  
Corner monument recovered in place and as described on the Plat of Survey sheets filed in the Forest County Clerk Office, done in Feb. 1987 by Wm. Cochrane (RLS-1107).
10. South Sixteenth Corner Between Sections 13 and 14.  
Corner monument recovered in place and as described on the Certified Established Land Corner sheet filed in the Forest County Register of Deeds Office, Document #124407, in Oct. 1983 by Wm. Cochrane (RLS-1107).
11. West Sixteenth Corner Between Sections 14 and 23.  
Corner monument recovered in place and as described on the Plat of Survey sheets filed in the Forest County Clerk Office, done in October 1986 by John Fisher (RLS-836).

CORNERS ESTABLISHED

1. West Sixteenth Corner Between Sections 11 and 14.  
Corner position is established at the midpoint and on line between the North Quarter Corner and the Northwest Section Corner of Section 14. The center of Town Road is 14 feet South of the monument.

Corner references:

Black Ash	12"	N03°E	25.75 feet
Black Ash	10"	N61°E	18.69 feet
Black Ash	9"	S33°E	59.91 feet
Steel sign post		East	0.9 feet

2. East Sixteenth Corner Between Sections 11 and 14.  
Corner position is established at the midpoint and on line between the North Quarter Corner and the Northeast Section Corner of Section 14. The center of the Town Road is 8 feet North of the monument.

Corner references:

Sugar Maple	6"	S39°E	31.54 feet
Sugar Maple	8"	N21°W	36.41 feet
Sugar Maple	7"	S27°W	32.40 feet
Steel sign post		South	12.0 feet

3. Northeast Sixteenth Corner of Section 14.  
Corner position is at the intersection of the straight lines between opposing sixteenth corners on the perimeter of the Northeast Quarter of Section 14.

## Corner references:

Sugar Maple	6"	S54°E	34.41 feet
Sugar Maple	8"	S80°W	35.60 feet
Steel sign post		West	0.6 feet

4. Center West Sixteenth Corner of Section 14.  
Corner position is established at the midpoint and on line between the West Quarter corner and the Center Quarter corner of Section 14.

## Corner references:

Sugar Maple	5"	S69°E	34.03 feet
Sugar Maple	10"	S15°W	15.78 feet
Steel sign post		East	1.0 feet

5. Center East Sixteenth Corner of Section 14.  
Corner position is established at the midpoint and on line between the East Quarter corner and the Center Quarter corner of Section 14.

## Corner references:

Cedar	8"	S85°E	15.43 feet
Cedar	6"	S01°E	27.73 feet
Steel sign post		West	0.9 feet

6. Southwest Sixteenth Corner of Section 14.  
Corner position is at the intersection of the straight lines between opposing sixteenth corners on the perimeter of the Southwest Quarter of Section 14.

## Corner references:

White Birch	14"	S07°W	15.89 feet
White Birch	13"	S81°W	16.68 feet
Steel sign post		NW	1.4 feet

7. Center South Sixteenth Corner of Section 14.  
Corner position is established at the midpoint and on line between the South Quarter corner and the Center Quarter corner of Section 14.

## Corner references:

Cedar	7"	S87°W	19.30 feet
Cedar	6"	S08°E	24.45 feet
Steel sign post		North	0.9 feet

8. Southeast Sixteenth Corner of Section 14.  
Corner position is at the intersection of the straight lines between opposing sixteenth corners on the perimeter of the Southeast Quarter of Section 14.

## Corner references:

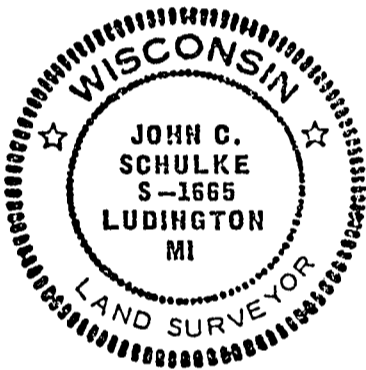
Maple	18"	S23°E	23.86 feet
Twin Balsam	7"	S61°W	38.64 feet
Steel sign post		NW	1.0 feet

SURVEYOR'S AFFIDAVIT

State of Wisconsin)  
County of Forest )<sup>ss</sup>

I, John C. Schulke, a Cadastral Surveyor, and a Registered Land Surveyor in the State of Wisconsin, hereby certify that I have surveyed and subdivided Section 14, Township 38 North, Range 14 East, Fourth Principal Meridian, State of Wisconsin.

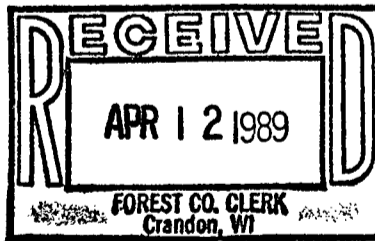
The plat map and survey notes herewith are a correct representation of the land surveyed and subdivided. I have surveyed and subdivided said section in accordance with the rules for the survey of the public lands and with the statutes of the State of Wisconsin.



John C. Schulke  
4604 So. Pere Marquette Rd.  
Ludington, Michigan 49431  
R.L.S. State of Wisconsin  
Date of Survey 1988  
Certificate S-1665

*John C. Schulke*  
Oct. 3rd, 1988

Survey requested by: *[Signature]* District Ranger      10-25-88 Date



*Dora C. James*