

Stock No. 26273

T 38 N - R 14 E, SECTION 13  
 PLAT OF SURVEY FOR CERTIFIED LAND CORNER  
 RESTORATION AND ESTABLISHMENT

Sheet 1 of 4

BEING THE CORNERS FOR THE S $\frac{1}{2}$  OF THE NW $\frac{1}{4}$ , THE W $\frac{1}{2}$  OF THE NE $\frac{1}{4}$   
 THE SW $\frac{1}{4}$  AND THE SE $\frac{1}{4}$

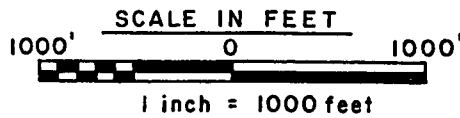
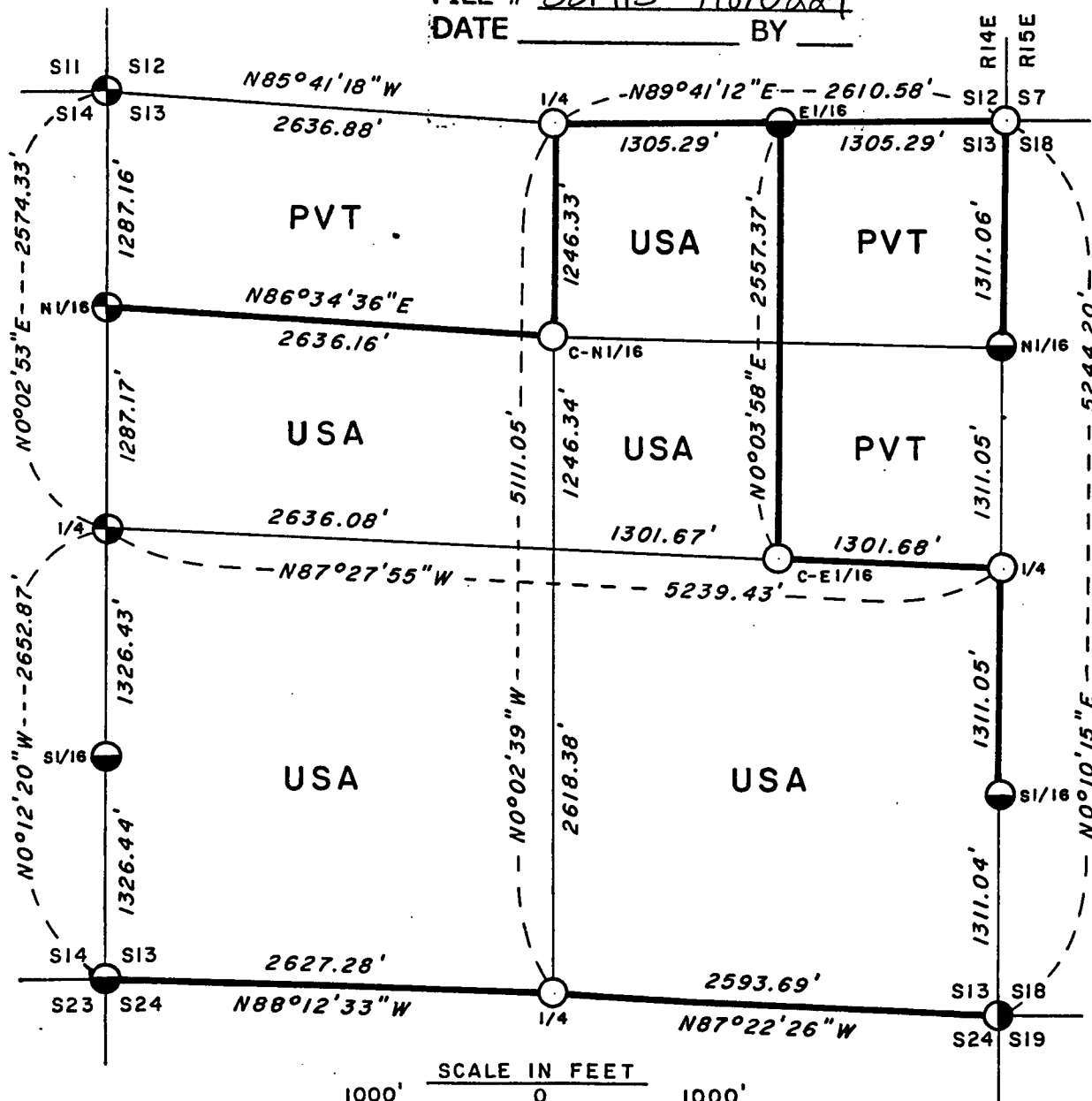
SECTION 13, TOWNSHIP 38 NORTH RANGE 14 EAST

FOURTH PRINCIPAL MERIDIAN, FOREST COUNTY, STATE OF WISCONSIN

FOREST CO SURVEYOR

FILE # 381413-19870224

DATE \_\_\_\_\_ BY \_\_\_\_\_



LEGEND

- ⊕ -- 2½ inch diameter aluminum pipe monument, 36 inches long with an aluminum cap stamped to identify the corner, buried in the road
- -- 2½ inch diameter aluminum pipe monument, 36 inches long with an aluminum cap stamped to identify the corner
- ◐ -- 2½ inch diameter aluminum pipe monument, 60 inches long with an aluminum cap stamped to identify the corner
- -- Forest County recorded monument
- Boundary line marked to Forest Service standards

Stock No. 26273

## T 38 N - R 14 E, SECTION 13

Sheet 2 of 4

SURVEY NOTES

This plat of survey is the product of a Photogrammetric Project commencing in the fall of 1981, and completed in the spring of 1985 for Township 38 North Range 15 East, and Sections 1, 12, 13, 24, and 25, Township 38 North Range 14 East, Fourth Principal Meridian, State of Wisconsin.

All bearings are grid bearings referenced to a true North Central Meridian in the center of Township 38 North Range 15 East.

Co-ordinate values for corner positions were computed from photogrammetric target values with an adjusted R.M.S. factor of 1.21.

This survey was made by the U.S. Department of Agriculture, Forest Service for the purpose of recovering, restoring, establishing, marking, and perpetuating the corners and boundary lines of U.S. Government Land on the perimeter and within the sections in this project area.

The Original Government Survey of the township lines was made in 1857 by Artemas Curtis. The original subdivision of Township 38 North Range 15 East was made in 1865 by William E. Daugherty, and the original subdivision of Township 38 North Range 14 East was made in 1865 by H. and J.L. Nowlin.

The field notes of this survey and a copy of this and the remaining sections in this project area are on file in the Forest Service Supervisors Office at Rhinelander, Wisconsin.

CORNERS RECOVERED AND RESTORED1. Northeast Section Corner.

Corner position restored by double proportion measurements.

Corner references:

Aspen	13"	N72°E	22.23 feet
Spruce	13"	S14°E	57.59 feet
Birch	8"	N77°W	23.00 feet
Steel sign post		Southwest	0.50 feet

2. East Quarter Corner.

Corner position restored at midpoint and on line between the Northeast and Southeast Section Corners.

Corner references:

Power Pole No.72-3767		N88°E	42.01 feet
Balsam	4"	S26°E	63.49 feet
R. Pine	12"	S83°W	54.25 feet

3. Southeast Section Corner.

Corner position is recovered as restored by Forest County in 1976.

1976 Corner references recovered:

Cedar	10"	N55°E	26.74 feet
-------	-----	-------	------------

New Corner references:

Cedar	12"	S31°E	31.78 feet
Cedar	4"	S78°W	30.33 feet
Cedar	6"	N58°W	28.46 feet
Steel sign post		Northeast	0.50 feet

Stock No. 26273

## T 38 N - R 14 E, SECTION 13

Sheet 3 of 4

4. South Quarter Corner.

Corner position restored from recovered 1½" iron pipe accepted as best available evidence of the corner position.

Corner references:

Maple W.fork	5"	N32° E	3.50 feet
Maple	6"	N74° W	9.06 feet
Steel sign post		Southeast	0.50 feet

5. Southwest Section Corner.

Corner position restored from 2" iron pipe and 4"x4" wood post accepted as best available evidence of the corner position.

Corner references:

Maple	7"	S47° E	121.06 feet
Spruce	12"	S 4° W	166.70 feet

6. West Quarter Corner.

Corner position restored in center line of Old Hwy. 139, and in line with East-West fence line running West.

Corner references:

Maple	8"	N61° E	78.54 feet
Maple	9"	S22° E	63.56 feet

7. Northwest Section Corner.

Corner position restored at intersection of Old Hwy. 139 and Forest road 2397.

Corner references:

B. Ash	6"	N51° E	60.47 feet
Spruce	11"	S 7° W	124.41 feet
Power Pole No.78-2468		S54° W	32.69 feet

8. North Quarter Corner.

Corner position restored from ties to 874 dated 1934.

Corner references:

Maple	4"	S42° E	0.99 feet
Maple	6"	S79° W	15.84 feet
Steel sign post		West	1.00 feet

CORNERS ESTABLISHED1. East Sixteenth Corner between Sections 12 and 13.

Corner position is established at midpoint and on line between the North Quarter Corner and the Northeast Section Corner.

Corner references:

Tamarack	8"	N50° W	19.60 feet
Spruce	8"	S65° W	13.50 feet
Steel sign post		Northeast	1.00 feet

2. North Sixteenth Corner between Sections 13 and 14.

Corner position is established at midpoint and on line between the West Quarter Corner and the Northwest Section Corner.

Corner references:

Tamarack	8"	S75° W	63.47 feet
Tamarack	11"	N57° W	62.16 feet

3. Center-North Sixteenth Corner.

Corner position is established at midpoint and on line between the North Quarter and the Center Quarter Corners.

Corner references:

R. Pine	10"	South	63.80 feet
Spruce	18"	West	90.35 feet
Steel sign post		Southeast	1.00 feet

Stock No. 26273

## T 38 N - R 14 E, SECTION 13

Sheet 4 of 4

4. North Sixteenth Corner between Sections 13 and 18.

Corner position is established at midpoint and on line between the Northeast Section Corner and the East Quarter Corner.

Corner references:

Tamarack	8"	N31°E	32.91 feet
Tamarack	11"	N14°W	23.00 feet

5. Center-East Sixteenth Corner.

Corner position is established at midpoint and on line between the Center Quarter Corner and the East Quarter Corner.

Corner references:

Spruce	14"	S60°E	35.25 feet
R. Pine	10"	N70°W	40.13 feet
Steel sign post		Northeast	1.00 feet

6. South Sixteenth Corner between Sections 13 and 14.

Corner position is established at midpoint and on line between the West Quarter Corner and the Southwest Section Corner.

Corner references:

B. Ash	7"	S67°W	16.79 feet
B. Ash	9"	N66°W	19.14 feet
Steel sign post		West	0.50 feet

7. South Sixteenth Corner between Sections 13 and 18.

Corner position is established at midpoint and on line between the East Quarter and the Southeast Section Corner.

Corner references:

Spruce	13"	N20°E	24.05 feet
Spruce	12"	S74°W	7.78 feet

SURVEYOR'S AFFIDAVIT

State of Wisconsin)  
County of Forest )<sup>ss.</sup>

I William B. Cochrane, Land Surveyor, U.S. Forest Service, and a registered land surveyor in the State of Wisconsin, hereby certify that I have surveyed and subdivided Section 13 Township 38 North, Range 14 East, Fourth Principal Meridian, State of Wisconsin.

The plat map and survey notes herewith are a correct representation of the land surveyed and divided. I have surveyed and subdivided said section in accordance with the rules for the survey of the public lands and with the statutes of the state of Wisconsin.

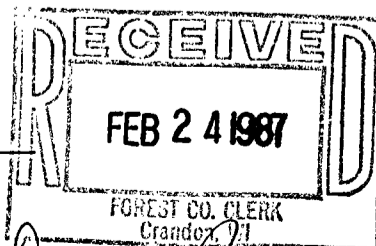


*William B. Cochrane*  
Land Surveyor, U.S. Forest Service  
R.L.S. State of Wisconsin  
Certificate S-1107

Date of Survey: 1985

Plat ready for filing:

*Edward Lopez*  
District Ranger



*Dora C. James*  
Forest Co. Clerk