

RECEIVED

12-38-14

NOV 14 18
CO. TREASURER

PLAT OF SURVEY
PART OF THE SW 1/4 - NE 1/4,
SECTION 12, T38N, R14E,
TOWN OF POPPLE RIVER,
FOREST COUNTY, WISCONSIN

NE CORNER
SEC. 12
FROM CSM
173363

1/16 CORNER
3/4" REBAR
BY OTHERS
A 3/4" REBAR BEARS
S 55°39'18"E 1.47'

S 88°14'35"E
1312.77'

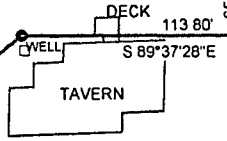
1/16 CORNER
1-1/4" IRON PIPE
BY OTHERS

N 88°15'06"W
1312.23'

1/16 CORNER
3/4" REBAR
BY OTHERS

POPPLE RIVER ROAD

STH 139
LC N 50°47'14"E
68.14'
R 1810.100
L 66.15'



24-113
75,000 SQ. FT.
1.722 ACRES
.003,002

E 1/4 SEC. 12
FROM CSM
173363

FOREST CO SURVEYOR
FILE # 381412-2d61031
DATE _____ BY _____



LEGEND

- 3/4 INCH REBAR, FOUND
- IRON PIPE, SIZE NOTED
- 3/4 INCH REBAR, SET

GRAPHIC SCALE

