

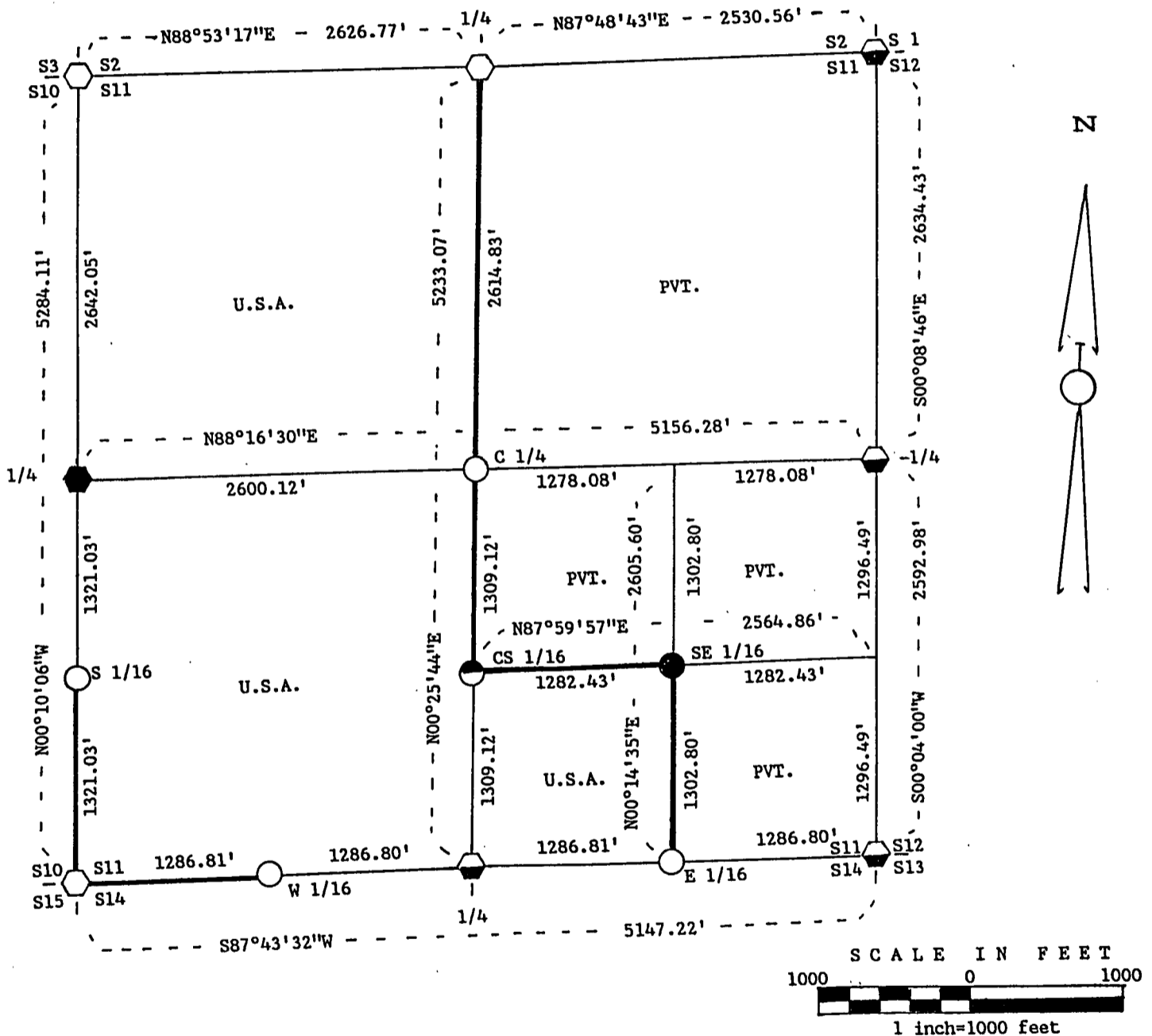
FOREST CO SURVEYOR

FILE # 381411 - 1988/003

DATE _____ BY _____

PLAT OF SURVEY FOR CERTIFIED LAND CORNER RESTORATION AND ESTABLISHMENT OF U.S. GOVERNMENT LAND

BEING THE CORNERS FOR THE NW 1/4, THE SW 1/4 AND THE SW 1/4 OF THHE SE 1/4. SECTION 11, T38N, R14E, FOURTH PRINCIPAL MERIDIAN FOREST COUNTY, STATE OF WISCONSIN



LEGEND

- Boundary line marked to standard.
- 1" diameter aluminum pipe monument, 36" long with an aluminum cap stamped to identify the corner.
- 1" diameter aluminum pipe monument, 60" long with an aluminum cap stamped to identify the corner.
- ◐ Chiseled an "X" on a Boulder for the corner, set a Witness Corner 1" diameter aluminum pipe monument, 36" long with an aluminum cap stamped to identify the corner.
- ◑ 2 1/2" diameter aluminum pipe monument, 36" long with an aluminum cap stamped to identify the corner.
- ◒ 2 1/2" diameter aluminum pipe monument, 36" long with an aluminum cap stamped to identify the corner, buried in the road.
- ◓ 2 1/2" diameter aluminum pipe monument, 60" long with an aluminum cap stamped to identify the corner.

NOTE: Bearings are referenced to surveys by John H. Fisher (S-836) of Sections 22 and 23, dated 1986 and Section 35, T39N, R14E by Wm. Cochrane (S-1107) dated 1986.

SURVEY NOTES

This survey was made by John C. Schulke, a Registered Land Surveyor in the State of Wisconsin, for the U.S. Department of Agriculture, Forest Service. The purpose of the survey was for recovery, establishing, marking and perpetuating the corners and boundary lines of the U.S. Government Land on the perimeter and within Section 11, Township 38 North, Range 14 East, Fourth Principal Meridian, Forest County, Wisconsin.

The Original Government Survey of the township boundary was done by Artemas Curtis in 1857. The Original Government Subdivision survey of this township was done by J.L. Nowlin in 1865.

The bearings between corner positions are true bearings as referenced to adjoining surveys of Sections 22 and 23, Township 38 North, Range 14 East by John H. Fisher (RLS-836) dated in 1986 and Section 35 Township 39 North, Range 14 East by Wm. Cochrane (RLS-1107) dated in 1988. A mapping angle correction was applied to Section 35 to convert from State Plane Grid to true bearing.

The accuracy of this survey exceeds the State requirement for closure of 1 in 3,000. Corners recovered or reestablished by this survey are marked as described in the map legend. Each monumented corner is referenced to blazed, scribed, painted, and tagged bearing trees. Tie bearings are magnetic, and corrected for declination.

CORNERS RECOVERED AND RESTORED

1. Section Corner Common to Sections 2, 3, 10 and 11.
Restored by proportionate measurement.

Corner references:

Sugar Maple	7"	N29°E	52.34 feet
Sugar Maple	8"	S67°E	52.98 feet
Sugar Maple	10"	S55°W	50.49 feet
Sugar Maple	12"	N51°W	18.81 feet
Steel sign post		South	0.9 feet

2. Quarter Corner Between Sections 2 and 11.
Found corner as monumented by Wm. Cochrane (RLS-1107) in May 1982. The bearing trees were established in 1982 and are standing.

Corner references:

Balsam	13"	N15°E	34.95 feet
Aspen	16"	S12°E	32.15 feet
Aspen	11"	N75°W	40.45 feet
Steel sign post		NW	1.00 feet

3. Section Corner Common to Sections 1, 2, 11 and 12.
Corner monument recovered in place and as described on a U.S. Public Land Survey Monument Record form filed in the Forest County Register of Deeds Office, Document #127889, in April 1985 by Wm. Cochrane (RLS-1107).
4. Quarter Corner Between Sections 11 and 12.
Corner monument recovered in place and as described on a U.S. Public Land Survey Monument Record form filed in the Forest County Register of Deeds Office, Document #127892, in April 1985 by Wm. Cochrane (RLS-1107).
5. Section Corner Common to Sections 11, 12, 13 and 14.
Corner monument recovered in place and as described on a U.S. Public Land Survey Monument Record form filed in the Forest County Register of Deeds Office, Document #127894, in April 1985 by Wm. Cochrane (RLS-1107).

6. Quarter Corner Between Sections 11 and 14.
Restored by proportionate measurement. Monument is 0.5 feet below the surface of the road and the center of the road is 3 feet North.

Corner references:

Red Maple	10"	N15°E	20.00 feet
White Ash	8"	S75°E	32.70 feet
Red Maple	16"	S35°W	36.57 feet
White Ash	10"	N55°W	42.65 feet
-Steel sign post		South	19.4 feet

7. Section Corner Common to Sections 10, 11, 14 and 15.
Restored by proportionate measurement.

Corner references:

Balsam	8"	N58°E	20.94 feet
Twin Cherry	7"	S53°E	35.97 feet
Birch	12"	S61°W	20.68 feet
Balsam	14"	N11°W	34.31 feet
Steel sign post		SW	0.7 feet

8. Quarter Corner Between Sections 10 and 11.
Restored by proportionate measurement. The monument is placed in a mound of stones 15 feet North of the North side of Popple River bank.

Corner references:

Red Maple	9"	N69°W	119.34 feet
Red Maple	5"	N07°W	145.41 feet
Boulder	6'X6'	S19°E	78.36 feet
Boulder	4'X5'	N33°W	105.26 feet
Steel sign post		West	1.1 feet

CORNERS ESTABLISHED

1. Center Quarter Corner of Section 11.
Corner position is established at the intersection of a straight lines between opposing Quarter corners of the perimeter of Section 11.
- Corner references:
- | | | | |
|-----------------|-----|-------|------------|
| Clump of Sug. | | | |
| Maple | 10" | N73°E | 15.50 feet |
| Clump of Sug. | | | |
| Maple | 5" | S46°W | 15.00 feet |
| Steel sign post | | North | 0.8 feet |
2. South Sixteenth Corner Between Sections 10 and 11.
Corner position is established at the midpoint and on line between the West Quarter corner and the Southwest Section Corner of Section 11.
- Corner references:
- | | | | |
|-----------------|----|-------|------------|
| Spruce | 3" | N02°E | 62.97 feet |
| Spruce | 3" | N75°E | 8.02 feet |
| Steel sign post | | North | 0.6 feet |
3. Center South Sixteenth Corner of Section 11.
Corner position is established at the midpoint and on line between the South Quarter Corner and the Center Quarter Corner of Section 11. The Witness Monument is N0°26'E 2.00 feet from the rock with a chisled "X" on it to mark the corner.

Survey requested by: *Edward A. [unclear]* District Ranger 1-17-89 Date

Corner references:
 Sugar Maple 5" S52°W 24.41 feet
 Sugar Maple 7" N13°W 34.68 feet
 Steel sign post NW 1.4 feet

4. Southeast Sixteenth Corner of Section 11.
 Corner position is established at the intersection of a straight lines between opposing Sixteenth Corners on the perimeter of the Southeast Quarter of Section 11.

Corner references:
 Black Ash 4" S82°E 6.85 feet
 Cedar 7" S08°W 14.56 feet
 Steel sign post West 0.9 feet

5. West Sixteenth Corner Between Section 11 and 14.
 Corner position is established at the midpoint and on line between the South Quarter Corner and the Southwest Section Corner of Section 11. The center of Town Road is 14 feet South of the monument.

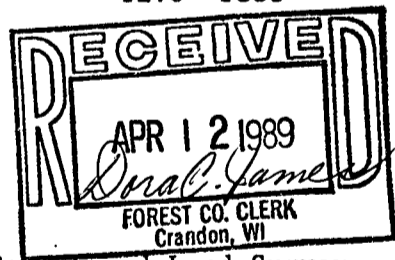
Corner references:
 Black Ash 12" N03°E 25.75 feet
 Black Ash 10" N61°E 18.69 feet
 Black Ash 9" S33°E 59.91 feet
 Steel sign post East 0.9 feet

6. East Sixteenth Corner Between Section 11 and 14.
 Corner position is established at the midpoint and on line between the South Quarter Corner and the Southeast Section Corner of Section 11. The center of the Town Road is 8 feet North of the monument.

Corner references:
 Sugar Maple 6" S39°E 31.54 feet
 Sugar Maple 8" N21°W 36.41 feet
 Sugar Maple 7" S27°W 32.40 feet
 Steel sign post South 12.0 feet

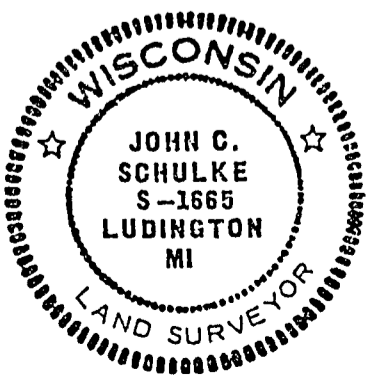
SURVEYOR'S AFFIDAVIT

State of Wisconsin)
 County of Forest)ss



I, John C. Schulke, a Cadastral Surveyor, and a Registered Land Surveyor in the State of Wisconsin, hereby certify that I have surveyed and subdivided Section 11, Township 38 North, Range 14 East, Fourth Principal Meridian, State of Wisconsin.

The plat map and survey notes herewith are a correct representation of the land surveyed and subdivided. I have surveyed and subdivided said section in accordance with the rules for the survey of the public lands and with the statutes of the State of Wisconsin.



John C. Schulke
 4604 South Pere Marquette Rd.
 Ludington, MI 49431
 R.L.S. State of Wisconsin
 Date of Survey 1988
 Certificate S-1665

John C Schulke
 Oct 3rd, 1988