

Stock No. 26273

FOREST CO SURVEYOR

FILE # 3814d-19870224

DATE _____ BY _____

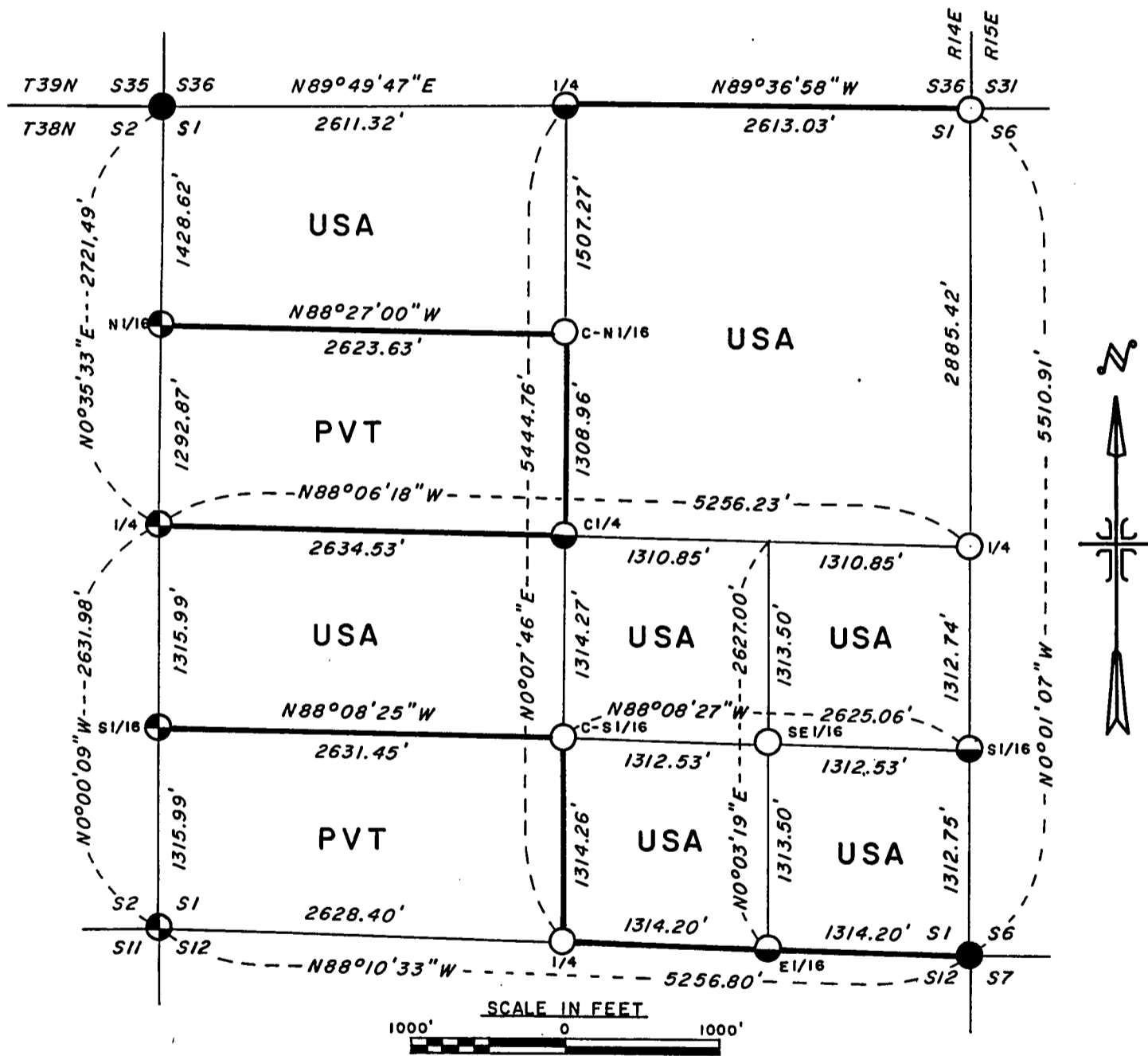
PLAT OF SURVEY FOR CERTIFIED LAND CORNER
RESTORATION AND ESTABLISHMENT

Sheet 1 of 4

BEING THE CORNERS FOR THE N 1/2 OF THE NW 1/4, THE NE 1/4,
THE N 1/2 OF THE SW 1/4 AND THE SE 1/4

SECTION 1, TOWNSHIP 38 NORTH, RANGE 14 EAST

FOURTH PRINCIPAL MERIDIAN, FOREST COUNTY, STATE OF WISCONSIN



LEGEND

- -- 2 1/2 inch diameter aluminum pipe monument, 36 inches long with an aluminum cap stamped to identify the corner.
- ⊕ -- 2 1/2 inch diameter aluminum pipe monument, 36 inches long with an aluminum cap stamped to identify the corner buried in the road.
- ◐ -- 2 1/2 inch diameter aluminum pipe monument, 60 inches long with an aluminum cap stamped to identify the corner.
- -- 2 1/2 inch diameter galvanized iron pipe, 60 inches long with a brass cap stamped to identify the corner.

Boundary line marked to Forest Service standards

Stock No. 26273

T 38 N-R 14 E, SECTION 1

SURVEY NOTES

Sheet 2 of 4

This plat of survey is the product of a Photogrammetric Project commencing in the fall of 1981, and completed in the spring of 1985 for Township 38 North Range 15 East, and Sections 1, 12, 13, 24, and 25, Township 38 North Range 14 East, Fourth Principal Meridian, State of Wisconsin.

All bearings are grid bearings referenced to a true North Central Meridian in the center of Township 38 North Range 15 East.

Co-ordinate values for corner positions were computed from photogrammetric target values with an adjusted R.M.S. factor of 1.21.

This survey was made by the U.S. Department of Agriculture, Forest Service for the purpose of recovering, restoring, establishing, marking, and perpetuating the corners and boundary lines of U.S. Government Land on the perimeter and within the sections in this project area.

The Original Government Survey of the township lines was made in 1857 by Artemas Curtis. The original subdivision of Township 38 North Range 15 East was made in 1865 by William E. Daugherty, and the original subdivision of Township 38 North Range 14 East was made in 1865 by H. and J.L. Nowlin.

The field notes of this survey and a copy of this and the remaining sections in this project area are on file in the Forest Service Supervisors Office at Rhinelander, Wisconsin.

CORNERS RECOVERED AND RESTORED1. Northeast Section Corner.

Corner position restored by single proportionate measurements and natural feature ties. (see Land Survey Monument Record.)

Corner references:

W. Birch	9"	N40°E	34.45 feet
Spruce	10"	S30°E	59.12 feet
Spruce	6"	S28°W	67.49 feet
Spruce	6"	N60°W	26.26 feet
Steel sign post		Northwest	0.50 feet

2. East Quarter Corner.

Corner position restored at proportionate distance and on line between the Northeast and Southeast Section Corners.

Corner references:

R. Pine	8"	N66°E	22.63 feet
R. Pine	11"	N 4°W	24.69 feet
Steel sign post		West	0.50 feet

3. Southeast Section Corner.

Corner position recovered as restored by Jean Resvick from original evidence in 1964.

1964 Corner references:

Aspen	5"	N12°E	58.28 feet
Aspen	4"	S35°E	33.15 feet
Aspen	5"	N43°W	41.59 feet

1964 Corner references recovered:

Aspen	8"	N12°E	58.28 feet
Aspen	10"	N43°W	41.59 feet

Aspen S35°E cut down for Air Photo Project.

New Corner references:

Spruce	10"	S16°W	69.95 feet
Wood sign post		Southeast	1.60 feet

Stock No. 26273

T 38 N - R 14 E, SECTION 1

4. South Quarter Corner.

Sheet 3 of 4

Corner position restored at midpoint and on line between the Southeast and Southwest Section Corners.

Corner references:

R. Pine	6"	N63°E	4.02 feet
R. Pine	6"	N45°W	6.03 feet
Steel sign post		Southeast	0.50 feet

5. Southwest Section Corner.

Corner position restored using center line of bridge on Old Hwy. 139 and original creek calls East and South and original swamp call West.

Corner references:

NE Bridge Corner		S89°E	13.02 feet
NW Bridge Corner		S89°W	13.01 feet
Power Pole No. 78-1305		N61°W	34.57 feet

6. West Quarter Corner.

Corner position restored in center line of Old Hwy 139 and in line with East-West Fence running East.

Corner references:

R. Pine	12"	S38°E	50.90 feet
R. Pine	18"	N70°W	63.60 feet

7. Northwest Section Corner.

Corner position recovered as restored by Jean Resvick in 1975 with relation to natural feature calls and at established road intersection

1975 Corner references:

R. Pine	12"	N62°E	41.43 feet
R. Pine	9"	S57°E	55.11 feet
R. Pine	12"	N46°W	53.25 feet

1975 Corner references recovered:

R. Pine	14"	N62°E	41.43 feet
R. Pine	12"	S57°E	55.11 feet
R. Pine	15"	N46°W	53.25 feet

8. North Quarter Corner.

Corner position restored from recovered wood post point and Forest Service Location Poster on old Cedar tree.

Corner references:

Cedar	9"	N45°E	11.25 feet
Cedar	11"	S47°E	28.45 feet
Steel sign post		Southeast	0.50 feet

CORNERS ESTABLISHED1. North Sixteenth Corner between Sections 1 and 2.

Corner position established at proportionate distance and on line between the West Quarter Corner and the Northwest Section Corner.

Corner references;

Power Pole No.73-2339		N80°E	34.61 feet
Basswood	10"	N17°W	80.42 feet

2. Center-North Sixteenth Corner.

Corner position established at proportionate distance and on line between the North Quarter Corner and the Center Quarter Corner.

Corner references:

Balsam	10"	S70°E	51.02 feet
Spruce	10"	S65°W	54.75 feet
Steel sign post		Northwest	0.50 feet

3. Center Quarter Corner.

Corner position is established at the intersection of the straight lines between opposing Quarter Corners on the perimeter of the section.

Corner references:

Maple	8"	S20°E	27.18 feet
Spruce	12"	S10°W	43.18 feet
Steel sign post		Northeast	1.00 feet

Stock No. 26273

T 38 N - R 14 E, SECTION 1

Sheet 4 of 4

4. South Sixteenth Corner between Sections 1 and 2.

Corner position is established at midpoint and on line between the West Quarter Corner and the Southwest Section Corner.

Corner references:

R. Pine	13"	N68°E	31.02 feet
Power Pole No.73-2158		S86°W	30.46 feet

5. Center-South Sixteenth Corner.

Corner position is established at midpoint and on line between the Center Quarter Corner and the South Quarter.

Corner references:

Elm	24"	S85°W	55.12 feet
Spruce	9"	N15°W	39.10 feet
Steel sign post		Southwest	2.00 feet

6. Southeast Sixteenth Corner.

Corner position is established at the intersection of the straight lines between opposing Sixteenth Corners on the perimeter of the Southeast Quarter of the section.

Corner references:

Cedar	8"	S40°E	82.50 feet
Spruce	12"	S 5°E	62.47 feet
Steel sign post		Northwest	1.00 feet

7. South Sixteenth Corner between Sections 1 and 6.

Corner position is established at midpoint and on line between the East Quarter and the Southeast Section Corner.

Corner references:

Elm (dead)		East	13.95 feet
No other references available.			
Steel sign post		Northwest	0.50 feet

8. East Sixteenth Corner between Sections 1 and 12.

Corner position is established at midpoint and on line between the South Quarter and the Southeast Section Corner.

Corner references:

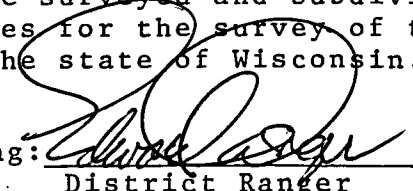
Spruce	5"	N85°W	14.72 feet
W. Birch	8"	N20°W	12.75 feet
Steel sign post		Southwest	1.00 feet

SURVEYOR'S AFFIDAVIT

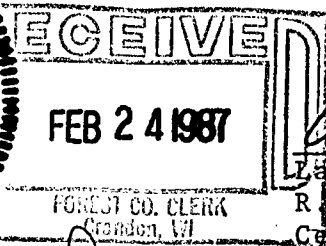
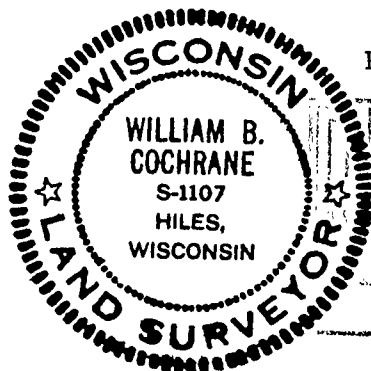
State of Wisconsin)
County of Forest) ss.


I William B. Cochrane, Land Surveyor, U.S. Forest Service, and a registered land surveyor in the State of Wisconsin, hereby certify that I have surveyed and subdivided Section 1, Township 38 North, Range 14 East, Fourth Principal Meridian, State of Wisconsin.

The plat map and survey notes herewith are a correct representation of the land surveyed and divided. I have surveyed and subdivided said section in accordance with the rules for the survey of the public lands and with the statutes of the state of Wisconsin.


Plat ready for filing: 

District Ranger




Land Surveyor, U.S. Forest Service
R.L.S. State of Wisconsin
Certificate S-1107

Date of Survey: 1985


Forest Co. Clerk