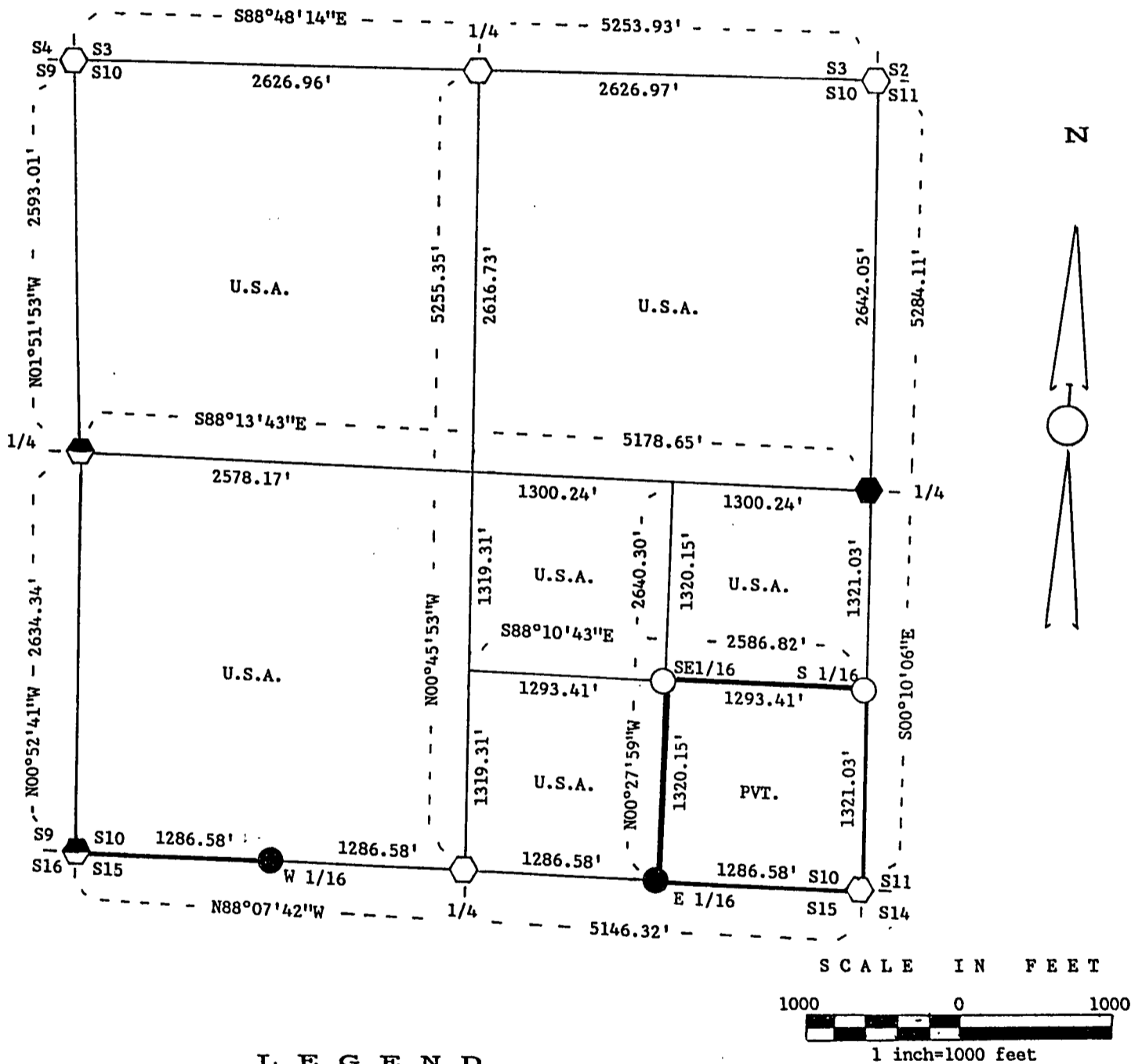


FOREST CO SURVEYOR
 FILE # 381410-1988/003
 DATE _____ BY _____

PLAT OF SURVEY FOR CERTIFIED LAND CORNER
 RESTORATION AND ESTABLISHMENT
 OF U.S. GOVERNMENT LAND

BEING THE CORNERS FOR THE NW 1/4, THE NE 1/4,
 THE N 1/2 OF THE SE 1/4 AND THE SW 1/4 OF THE SE 1/4.
 SECTION 10, T38N, R14E FOURTH PRINCIPAL MERIDIAN
 FOREST COUNTY, STATE OF WISCONSIN



LEGEND

- Boundary line marked to standard.
- 1" diameter aluminum pipe monument, 36" long with an aluminum cap stamped to identify the corner.
- 1" diameter aluminum pipe monument, 60" long with an aluminum cap stamped to identify the corner.
- ⬡ 2 1/2" diameter aluminum pipe monument, 36" long with an aluminum cap stamped to identify the corner.
- ⬢ 2 1/2" diameter aluminum pipe monument, 60" long with an aluminum cap stamped to identify the corner.
- ⬠ 2" diameter galvanized iron pipe monument filled with concrete, 60" long with a brass cap stamped to identify the corner.

NOTE: Bearings are referenced to surveys by John H. Fisher (S-836) of Sections 22 and 23, dated 1986 and Section 35, T39N, R14E by Wm. Cochrane (S-1107) dated 1988.

SURVEY NOTES

This survey was made by John C. Schulke, a Registered Land Surveyor in the State of Wisconsin, for the U.S. Department of Agriculture, Forest Service. The purpose of the survey was for recovery, establishing, marking and perpetuating the corners and boundary lines of the U.S. Government Land on the perimeter and within Section 10, Township 38 North, Range 14 East, Fourth Principal Meridian, Forest County, Wisconsin.

The Original Government Survey of the township boundary was done by Artemas Curtis in 1857. The Original Government Subdivision survey of this township was done by J.L. Nowlin in 1865.

The bearings between corner positions are true bearings as referenced to adjoining surveys of Sections 22 and 23, Township 38 North, Range 14 East by John H. Fisher (RLS-836) dated in 1986 and Section 35 Township 39 North, Range 14 East by Wm. Cochrane (RLS-1107) dated in 1988. A mapping angle correction was applied to Section 35 to convert from State Plane Grid to true bearing.

The accuracy of this survey exceeds the State requirement for closure of 1 in 3,000. Corners recovered or reestablished by this survey are marked as described in the map legend. Each monumented corner is referenced to blazed, scribed, painted, and tagged bearing trees. Tie bearings are magnetic, and corrected for declination.

CORNERS RECOVERED AND RESTORED

1. Section Corner Common to Sections 3, 4, 9 and 10.
Corner position restored as an obliterated corner. Recovered rock pile as described by E. J. Carpenter dated in April 1936 as the best evidence of the location of the original corner.

Recovered corner references:

Red Maple stub	14"	S20°E	11.6 feet
Balsam stub	14"	N23°W	5.8 feet
Stump hole		N63°E	5.3 feet

Corner references:

Red Maple	12"	N85°W	18.27 feet
Sugar Maple	9"	N06°W	35.60 feet
Sugar Maple	8"	S05°W	27.65 feet
Red Maple	10"	N29°E	45.73 feet
Steel sign post		East	1.5 feet

2. Quarter Corner Between Sections 3 and 10.
Restored by proportionate measurement.

Corner references:

Spruce	8"	N82°E	49.21 feet
Aspen	7"	S42°E	23.68 feet
Spruce	10"	N80°W	20.20 feet
"X" on Boulder	5'X4'	S80°W	31.65 feet
Steel sign post		South	1.2 feet

3. Section Corner Common to Sections 2, 3, 10 and 11.
Restored by proportionate measurement.

Corner references:

Sugar Maple	7"	N29°E	52.34 feet
Sugar Maple	8"	S67°E	52.98 feet
Sugar Maple	10"	S55°W	50.49 feet
Sugar Maple	12"	N51°W	18.81 feet
Steel sign post		South	0.9 feet

4. Quarter Corner Between Sections 10 and 11.
Restored by proportionate measurement. The monument is placed in a mound of stones 15 feet North of the North side of Popple River bank.

Corner references:

Red Maple	9"	N69°W	119.34 feet
Red Maple	5"	N07°W	145.41 feet
"X" on boulder	6'X6'	S19°E	78.36 feet
"X" on boulder	4'X5'	N33°W	105.26 feet
Steel sign post		West	1.1 feet

5. Section Corner Common to Sections 10, 11, 14 and 15.
Restored by proportionate measurement.

Corner references:

Balsam	8"	N58°E	20.94 feet
Twin Cherry	7"	S53°E	35.97 feet
Birch	12"	S61°W	20.68 feet
Balsam	14"	N11°W	34.41 feet
Steel sign post		SW	0.7 feet

6. Quarter Corner Between Sections 10 and 15.
Restored by proportionate measurement.

Corner references:

Cedar	14"	N16°E	20.14 feet
Yellow Birch	5"	N66°E	26.89 feet
Hemlock	16"	S82°W	16.09 feet
Steel sign post		West	1.0 feet

7. Section Corner Common to Sections 9, 10, 15 and 16.
Recovered corner monument in place and was stamped by Robert Badow (RLS-104) in 1959.

Recovered corner references:

Cedar	16"	N49°W	38.35 feet
Hemlock (dead)	22"	S58°W	9.2 feet
Maple stump	12"	S36°E	47.9 feet

Corner references:

Red Maple	10"	N08°E	24.48 feet
Sugar Maple	10"	S69°E	31.09 feet
Red Maple	12"	S17°W	25.00 feet
Twin Red Maple	10"	N23°W	57.18 feet
Steel sign post		NW	1.0 feet

8. Quarter Corner Between Sections 9 and 10.
Corner monument recovered in place.

Recovered corner references:

Sugar Maple laying down		S11°E	9.20 feet
Black Ash	13"	N52°W	29.25 feet
Red Maple	16"	East	29.83 feet

Corner references:

Spruce	13"	N57°E	26.95 feet
Red Maple	5"	S86°W	32.53 feet
Steel sign post		SW	0.9 feet

CORNER ESTABLISHED

1. Southeast Sixteenth Corner of Section 10.

Corner position is established at the intersection of a straight lines between opposing sixteenth corners on the perimeter of the Southeast Quarter of Section 10.

Corner references:

Black Ash	5"	N13°W	40.15 feet
White Birch	14"	S58°W	13.24 feet
Steel sign post		North	0.7 feet

2. South Sixteenth Corner Between Sections 10 and 11.

Corner position is established at the midpoint and on line between the East Quarter corner and the Southeast Section corner of Section 10.

Corner references:

Spruce	3"	N02°E	62.97 feet
Spruce	3"	N75°E	8.02 feet
Steel sign post		North	0.6 feet

3. West Sixteenth Corner Between Sections 10 and 15.

Corner position is established at the midpoint and on line between the South Quarter corner and the Southwest Section corner of Section 10.

Corner references:

Cedar	9"	S59°E	29.67 feet
Cedar	6"	N15°W	34.53 feet
Red Maple	5"	N81°E	26.70 feet
Twin Red Maple	4"	S57°W	10.08 feet
Steel sign post		East	1.0 feet

4. East Sixteenth Corner Between Sections 10 and 15.

Corner position is established at the midpoint and on line between the South Quarter corner and the Southeast Section corner of Section 10.

Corner references:

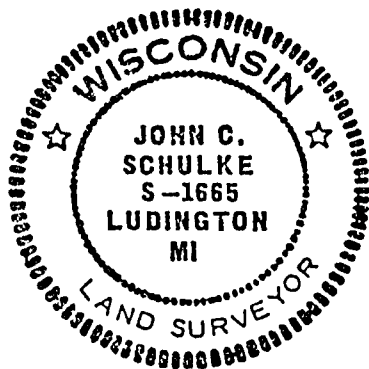
Cedar	14"	S25°W	33.46 feet
Black Cherry	5"	S84°W	34.18 feet
Steel sign post		South	0.7 feet

SURVEYOR'S AFFIDAVIT

State of Wisconsin)
County of Forest)^{ss}

I, John C. Schulke, a Cadastral Surveyor, and a Registered Land Surveyor in the State of Wisconsin, hereby certify that I have surveyed and subdivided Section 10, Township 38 North, Range 14 East, Fourth Principal Meridian, State of Wisconsin.

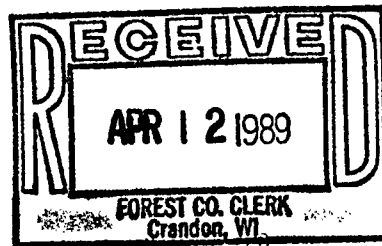
The plat map and survey notes herewith are a correct representation of the land surveyed and subdivided. I have surveyed and subdivided said section in accordance with the rules for the survey of the public lands and with the statutes of the State of Wisconsin.



John C. Schulke
4604 So. Pere Marquette Rd.
Ludington, MI 49431
R.L.S. State of Wisconsin
Date of Survey 1988
Certificate S-1665

John C Schulke
Oct. 3rd 1988

Survey requested by: *[Signature]* 10-25-88
District Ranger Date



Dora C. James