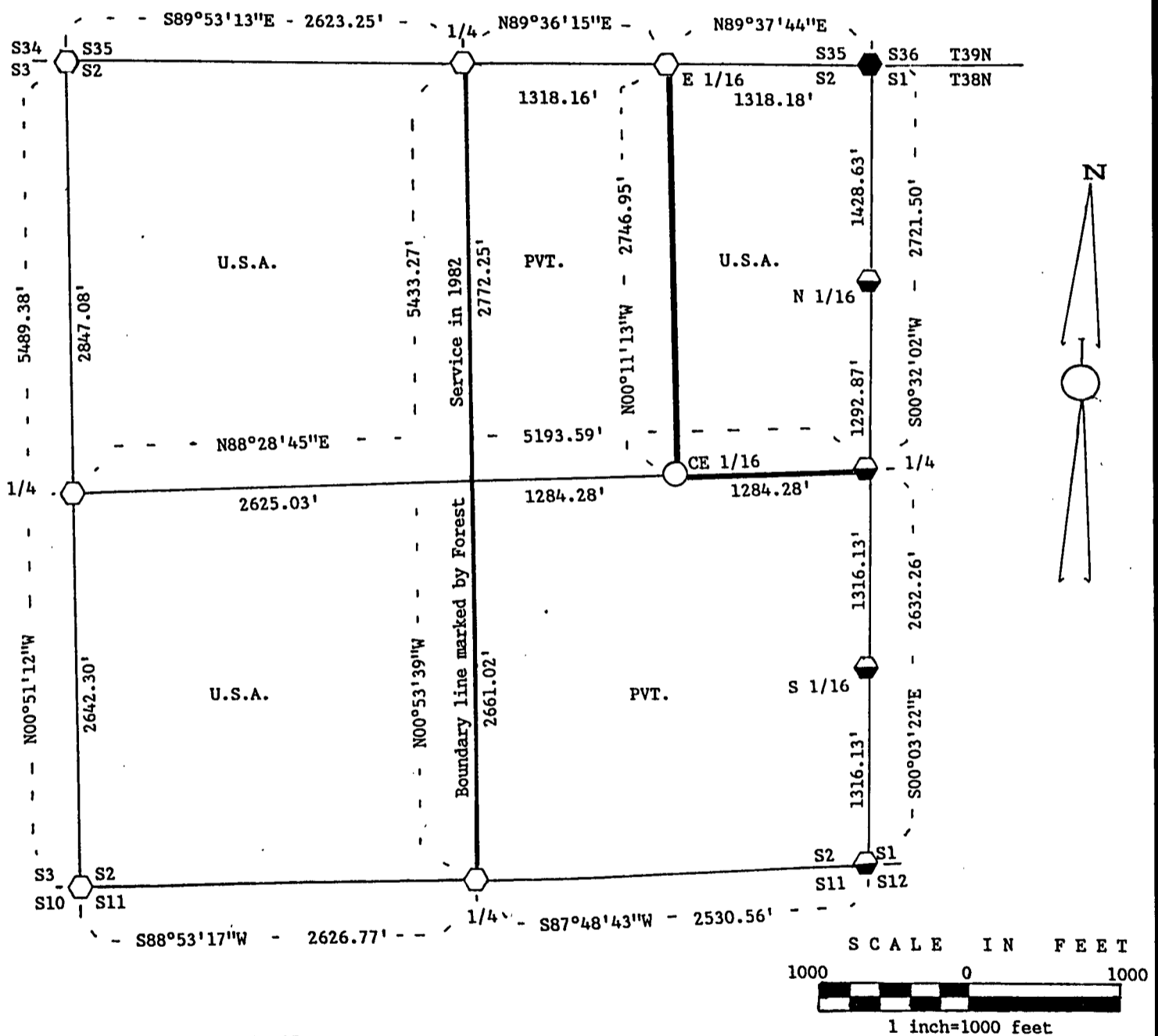


FOREST SURVEYOR  
 FILE # 381402-1988/003  
 DATE \_\_\_\_\_ BY \_\_\_\_\_

PLAT OF SURVEY FOR CERTIFIED LAND CORNER  
 RESTORATION AND ESTABLISHMENT  
 OF U.S. GOVERNMENT LAND

BEING THE CORNERS FOR THE NW 1/4, THE SW 1/4 AND THE E 1/2 OF THE NE 1/4.  
 SECTION 2, T38N, R14E, FOURTH PRINCIPAL MERIDIAN  
 FOREST COUNTY, STATE OF WISCONSIN



L E G E N D

- Boundary line marked to standard.
- 1" diameter aluminum pipe monument, 36" long with an aluminum cap stamped to identify the corner.
- ◐ 2 1/2" diameter aluminum pipe monument, 36" long with an aluminum cap stamped to identify the corner.
- ◑ 2 1/2" diameter aluminum pipe monument, 36" long with an aluminum cap stamped to identify the corner, buried in the road.
- ◒ 2 1/2" diameter aluminum pipe monument, 60" long with an aluminum cap stamped to identify the corner.

NOTE: Bearings are referenced to surveys by John H. Fisher (S-836) of Sections 22 and 23 dated 1986 and Section 35, T39N, R14E, by Wm. Cochrane (S-1107) dated 1988.

## SURVEY NOTES

This survey was made by John C. Schulke, a Registered Land Surveyor in the State of Wisconsin, for the U.S. Department of Agriculture, Forest Service. The purpose of the survey was for recovery, establishing, marking and perpetuating the corners and boundary lines of the U.S. Government Land on the perimeter and within Section 2, Township 38 North, Range 14 East, Fourth Principal Meridian, Forest County, Wisconsin.

The Original Government Survey of the township boundary was done by Artemas Curtis in 1857. The Original Government Subdivision survey of this township was done by J.L. Nowlin in 1865.

The bearings between corner positions are true bearings as referenced to adjoining surveys of Sections 22 and 23, Township 38 North, Range 14 East by John H. Fisher (RLS-836) dated in 1986 and Section 35 Township 39 North, Range 14 East by Wm. Cochrane (RLS-1107) dated in 1988. A mapping angle correction was applied to Section 35 to convert from State Plane Grid to true bearing.

The accuracy of this survey exceeds the State requirement for closure of 1 in 3,000. Corners recovered or reestablished by this survey are marked as described in the map legend. Each monumented corner is referenced to blazed, scribed, painted, and tagged bearing trees. Tie bearings are magnetic, and corrected for declination.

CORNERS RECOVERED AND RESTORED

1. Section Corner Common to Sections 2, 3, 34 and 35.  
Corner monument recovered in place and as described on a U.S. Public Land Survey Monument record form filed in the Forest County Register of Deeds office, Document #132294, in March 1987 by Wm. Cochrane (RLS-1107).
2. Quarter Corner Between Sections 2 and 35.  
Corner monument recovered in place and as described on a U.S. Public Land Survey Monument record form filed in the Forest County Register of Deeds office, Document #132295, in March 1987 by Wm. Cochrane (RLS-1107).
3. Section Corner Common to Sections 1, 2, 35 and 36.  
Corner monument recovered in place and as described on a U.S. Public Land Survey Monument record form filed in the Forest County Register of Deeds office, Document #127884, in April 1985 by Wm. Cochrane (RLS-1107).
4. Quarter Corner Between Sections 1 and 2.  
Corner monument recovered in place and as described on a U.S. Public Land Survey Monument record form filed in the Forest County Register of Deeds office, Document #127887, in April 1985 by Wm. Cochrane (RLS-1107).
5. Section Corner Common to Sections 1, 2, 11 and 12.  
Corner monument recovered in place and as described on a U.S. Public Land Survey Monument record form filed in the Forest County Register of Deeds office, Document #127889, in April 1985 by Wm. Cochrane (RLS-1107).
6. Quarter Corner Between Sections 2 and 11.  
Found corner as monumented by Wm. Cochrane (RLS-1107) in May 1982. The bearing trees were established in 1982 and are standing.

## Corner references:

Balsam	13"	N15°E	34.95 feet
Aspen	16"	S12°E	32.15 feet
Aspen	11"	N75°W	40.45 feet
Steel sign post		NW	1.00 feet

7. Section Corner Common to Sections 2, 3, 10 and 11.  
Restored by proportionate measurement.

## Corner references:

Sugar Maple	7"	N29°E	52.34 feet
Sugar Maple	8"	S67°E	52.98 feet
Sugar Maple	10"	S55°W	50.49 feet
Sugar Maple	12"	N51°W	18.81 feet
Steel sign post		South	0.9 feet

8. Quarter Corner Between Sections 2 and 3.  
Restored by proportionate measurement.

## Corner references:

Sugar Maple	18"	S52°W	28.98 feet
Sugar Maple	8"	N73°W	23.78 feet
Sugar Maple	7"	N50°E	27.24 feet
Sugar Maple	12"	S33°E	34.46 feet
Steel sign post		East	0.9 feet

9. East Sixteenth Corner Between Sections 2 and 35.

In 1988, Wm. B. Cochrane established the corner position at midpoint and on line between the Southeast Section corner and the South Quarter corner. Monument is 0.5 feet below the surface of the road.

## Recovered 1982 Corner references:

Basswood	14"	N37°E	46.33 feet
Maple	10"	S55°E	97.00 feet
Steel sign post			

10. North Sixteenth Corner Between Sections 1 and 2.

Recovered corner monument in place and as described on a Plat of Survey sheet filed in the Forest County Clerk Office in Feb. 1987 by Wm. B. Cochrane (R.L.S.-1107).

11. South Sixteenth Corner Between Sections 1 and 2.

Recovered corner monument in place and as described on a Plat of Survey sheet filed in the Forest County Clerk Office in Feb. 1987 by Wm. B. Cochrane (R.L.S.-1107).

## CORNERS ESTABLISHED

1. Center East Sixteenth Corner of Section 2.

Corner position is established at the midpoint and on line between the East Quarter corner and the Center Quarter corner of Section 2.

## Corner references:

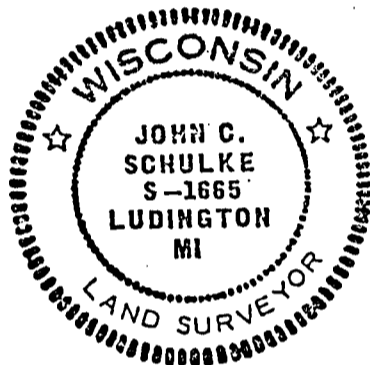
Sugar Maple	5"	N79°E	19.50 feet
Sugar Maple	6"	S10°W	14.49 feet
Steel sign post		East	0.7 feet
Fence Corner Post		S83°W	32.5 feet

SURVEYOR'S AFFIDAVIT

State of Wisconsin)  
County of Forest )<sup>ss</sup>

I, John C. Schulke, a Cadastral Surveyor, and a Registered Land Surveyor in the State of Wisconsin, hereby certify that I have surveyed and subdivided Section 02, Township 38 North, Range 14 East, Fourth Principal Meridian, State of Wisconsin.

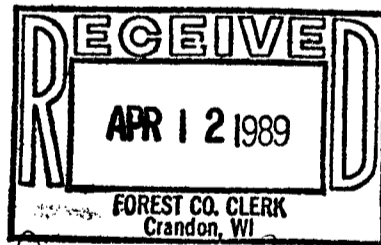
The plat map and survey notes herewith are a correct representation of the land surveyed and subdivided. I have surveyed and subdivided said section in accordance with the rules for the survey of the public lands and with the statutes of the State of Wisconsin.



John C. Schulke  
4604 So. Pere Marquette Rd.  
Ludington, MI 49431  
R.L.S. State of Wisconsin  
Date of Survey 1988  
Certificate S-1665

*John C. Schulke*  
Oct. 3rd 1988

Survey requested by: *Edward Berger* 10-25-88  
District Ranger Date



*Dora C. James*