

PLAT OF SURVEY

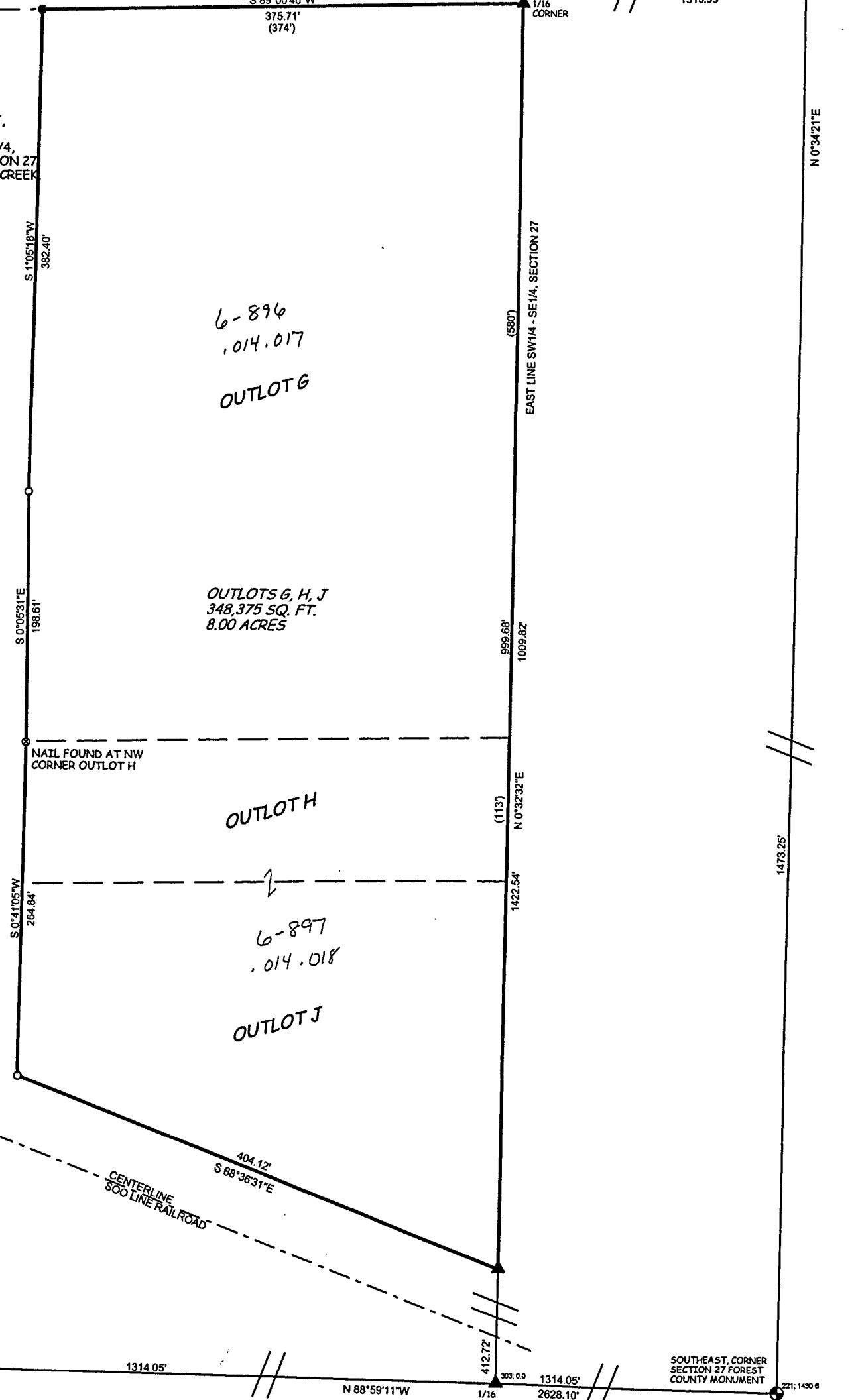
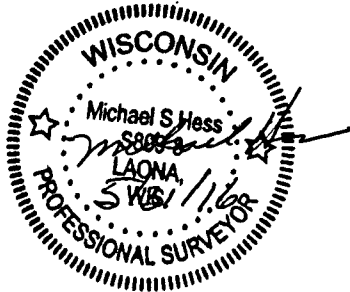
LOTS 3, 4, AND 5, OF BLOCK 2 AND OUTLOTS G, H, AND J, OF THE PLAT OF THE VILLAGE OF ENGLEKING, LOCATED IN THE NORTHWEST 1/4 OF THE SOUTHEAST 1/4, AND THE SOUTHWEST 1/4 OF THE SOUTHEAST 1/4, OF SECTION 27 TOWNSHIP 37 NORTH, RANGE 16 EAST, TOWN OF ARMSTRONG CREEK FOREST COUNTY, WISCONSIN

GRAPHIC SCALE



LEGEND

- 1 INCH IRON PIPE, FOUND
- 1-1/4 INCH IRON PIPE, FOUND
- ⊙ FOREST COUNTY PLSS, AS NOTED
- ▲ COMPUTED POINT, NOT MONUMENTED
- 3/4 INCH REBAR, SET



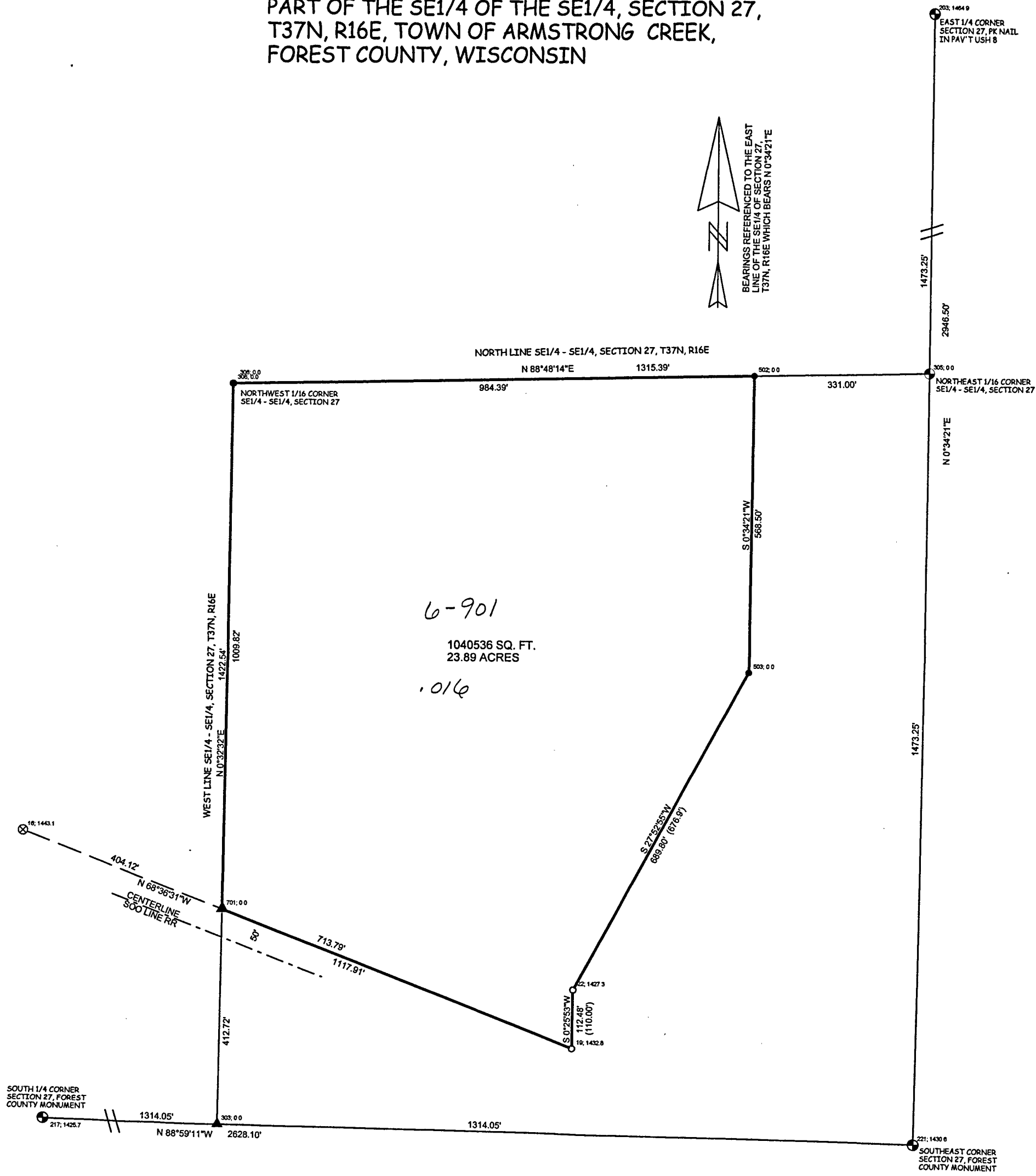
SOUTH 1/4, CORNER SECTION 27 FOREST COUNTY MONUMENT

SOUTHEAST, CORNER SECTION 27 FOREST COUNTY MONUMENT

2017  
Armstrong Creek

### SURVEY FOR STANLEY BORZECKI

PART OF THE SE1/4 OF THE SE1/4, SECTION 27,  
T37N, R16E, TOWN OF ARMSTRONG CREEK,  
FOREST COUNTY, WISCONSIN



6-901

1040536 SQ. FT.  
23.89 ACRES

.016

LEGEND

- 3/4 INCH REBAR, SET
- ▲ COMPUTED POSITION, NOT MONUMENTED
- 1-1/4 INCH IRON PIPE, FOUND
- ⊕ FOREST COUNTY PLSS, AS NOTED
- ⊗ 1 INCH IRON PIPE, FOUND

GRAPHIC SCALE

