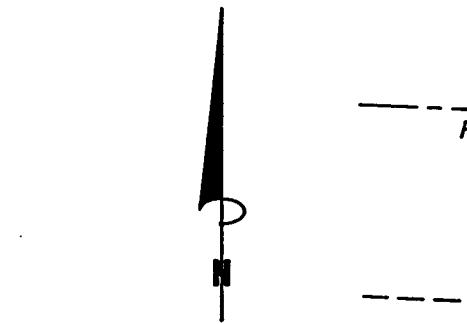


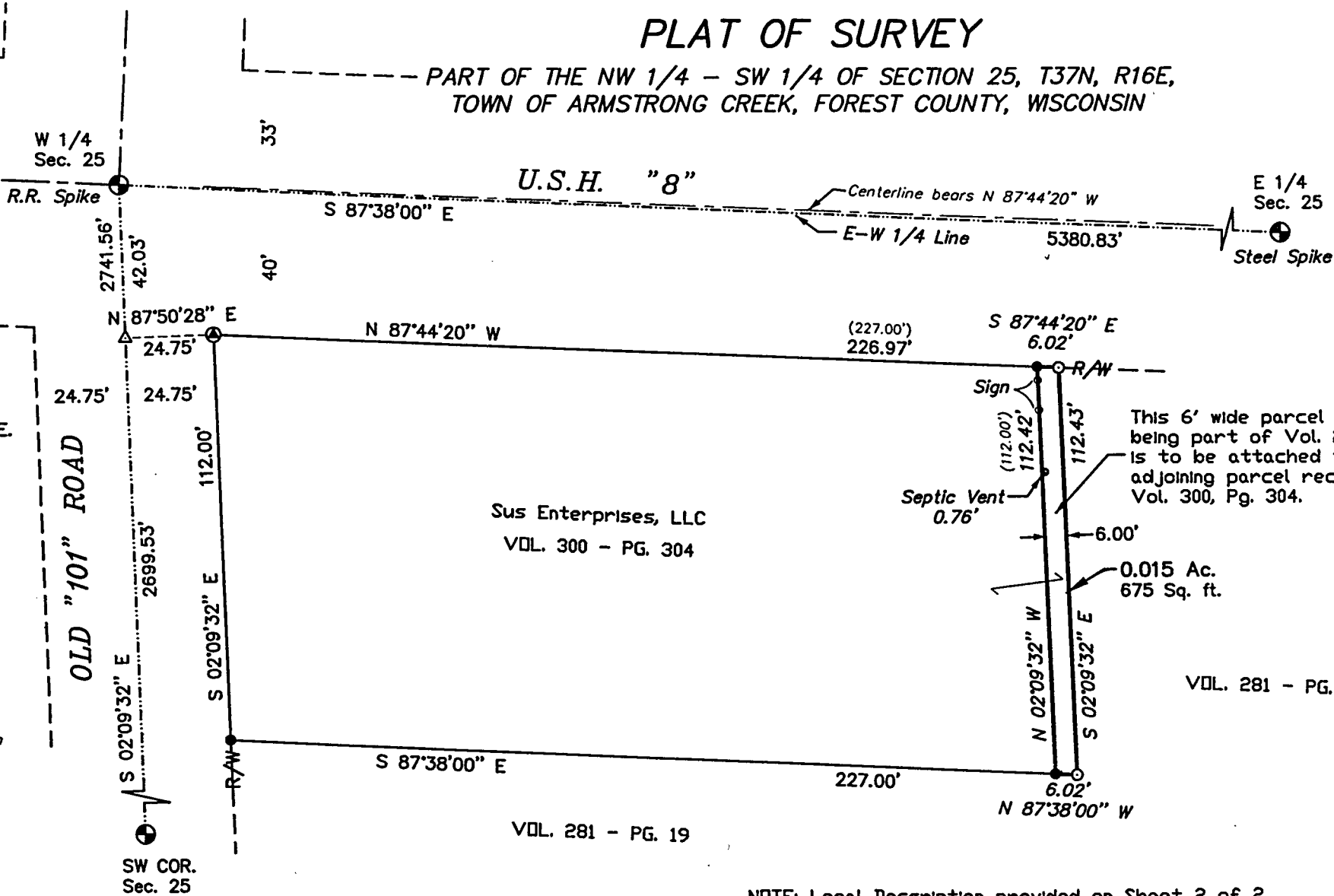
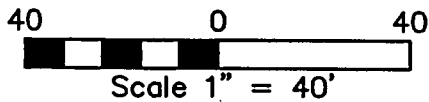
12-9-10

PLAT OF SURVEY

PART OF THE NW 1/4 - SW 1/4 OF SECTION 25, T37N, R16E,
TOWN OF ARMSTRONG CREEK, FOREST COUNTY, WISCONSIN



Bearings are referenced to the Forest County Grid, the West line of said SW 1/4 bears S 02°09'32" E.



This 6' wide parcel of land being part of Vol. 281, Pg. 19 is to be attached to the adjoining parcel recorded in Vol. 300, Pg. 304.

0.015 Ac. 675 Sq. ft.

NOTE: Legal Description provided on Sheet 2 of 2.

SURVEYOR'S CERTIFICATE:

I, Michael A. Tremel, Registered Land Surveyor, HEREBY certify that by the order of Frank Sus: I have surveyed and mapped the hereon described and depicted lands and that this map is a true and correct representation of the lands surveyed to the best of my knowledge and belief.

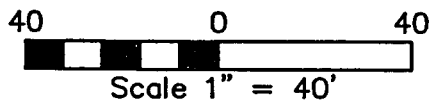
DWG. NO.: 905-10	LEGEND:	⊕ EXISTING MONUMENT OF RECORD (AS NOTED)	SHT. NO. 1 OF 2
		● EXISTING 3/4" REBAR	
		⊙ EXISTING P.K. NAIL	
		○ SET 1" O.D. X 18" IRON PIPE	
		△ COMPUTED POSITION	() RECORDED AS

PLAT OF SURVEY

PART OF THE NW 1/4 - SW 1/4 OF SECTION 25, T37N, R16E,
TOWN OF ARMSTRONG CREEK, FOREST COUNTY, WISCONSIN



Bearings are referenced to the Forest County Grid, the West line of said SW 1/4 bears S 02°09'32" E.



OLD "101" ROAD

W 1/4 Sec. 25

R.R. Spike

2741.56'

42.03'

33'

40'

24.75'

24.75'

24.75'

24.75'

24.75'

24.75'

24.75'

24.75'

24.75'

24.75'

24.75'

24.75'

24.75'

24.75'

24.75'

24.75'

24.75'

24.75'

24.75'

24.75'

24.75'

24.75'

24.75'

24.75'

24.75'

S 02°09'32" E

2699.53'

S 02°09'32" E

112.00'

S 02°09'32" E

227.00'

S 02°09'32" E

227.00'

S 02°09'32" E

227.00'

S 02°09'32" E

227.00'

S 02°09'32" E

227.00'

S 02°09'32" E

227.00'

S 02°09'32" E

227.00'

S 02°09'32" E

227.00'

S 02°09'32" E

227.00'

S 02°09'32" E

227.00'

S 02°09'32" E

227.00'

S 02°09'32" E

227.00'

S 02°09'32" E

N 87°50'28" E

226.97'

N 87°44'20" W

226.97'

N 87°44'20" W

226.97'

N 87°44'20" W

226.97'

N 87°44'20" W

226.97'

N 87°44'20" W

226.97'

N 87°44'20" W

226.97'

N 87°44'20" W

226.97'

N 87°44'20" W

226.97'

N 87°44'20" W

226.97'

N 87°44'20" W

226.97'

N 87°44'20" W

226.97'

N 87°44'20" W

226.97'

N 87°44'20" W

226.97'

N 87°44'20" W

S 87°38'00" E

5380.83'

S 87°38'00" E

5380.83'

S 87°38'00" E

5380.83'

S 87°38'00" E

5380.83'

S 87°38'00" E

5380.83'

S 87°38'00" E

5380.83'

S 87°38'00" E

5380.83'

S 87°38'00" E

5380.83'

S 87°38'00" E

5380.83'

S 87°38'00" E

5380.83'

S 87°38'00" E

5380.83'

S 87°38'00" E

5380.83'

S 87°38'00" E

5380.83'

S 87°38'00" E

5380.83'

S 87°38'00" E

S 87°38'00" E

5380.83'

S 87°38'00" E

5380.83'

S 87°38'00" E

5380.83'

S 87°38'00" E

5380.83'

S 87°38'00" E

5380.83'

S 87°38'00" E

5380.83'

S 87°38'00" E

5380.83'

S 87°38'00" E

5380.83'

S 87°38'00" E

5380.83'

S 87°38'00" E

5380.83'

S 87°38'00" E

5380.83'

S 87°38'00" E

5380.83'

S 87°38'00" E

5380.83'

S 87°38'00" E

5380.83'

S 87°38'00" E

S 87°38'00" E

5380.83'

S 87°38'00" E

5380.83'

S 87°38'00" E

5380.83'

S 87°38'00" E

5380.83'

S 87°38'00" E

5380.83'

S 87°38'00" E

5380.83'

S 87°38'00" E

5380.83'

S 87°38'00" E

5380.83'

S 87°38'00" E

5380.83'

S 87°38'00" E

5380.83'

S 87°38'00" E

5380.83'

S 87°38'00" E

5380.83'

S 87°38'00" E

5380.83'

S 87°38'00" E

5380.83'

S 87°38'00" E

S 87°38'00" E

5380.83'

S 87°38'00" E

5380.83'

S 87°38'00" E

5380.83'

S 87°38'00" E

5380.83'

S 87°38'00" E

5380.83'

S 87°38'00" E

5380.83'

S 87°38'00" E

5380.83'

S 87°38'00" E

5380.83'

S 87°38'00" E

5380.83'

S 87°38'00" E

5380.83'

S 87°38'00" E

5380.83'

S 87°38'00" E

5380.83'

S 87°38'00" E

5380.83'

S 87°38'00" E

5380.83'

S 87°38'00" E

S 87°38'00" E

5380.83'

S 87°38'00" E

5380.83'

S 87°38'00" E

5380.83'

S 87°38'00" E

5380.83'

S 87°38'00" E

5380.83'

S 87°38'00" E

5380.83'

S 87°38'00" E

5380.83'

S 87°38'00" E

5380.83'

S 87°38'00" E

5380.83'

S 87°38'00" E

5380.83'

S 87°38'00" E

5380.83'

S 87°38'00" E

5380.83'

S 87°38'00" E

5380.83'

S 87°38'00" E

5380.83'

S 87°38'00" E

S 87°38'00" E

5380.83'

S 87°38'00" E

5380.83'

S 87°38'00" E

5380.83'

S 87°38'00" E

5380.83'

S 87°38'00" E

5380.83'

S 87°38'00" E

5380.83'

S 87°38'00" E

5380.83'

S 87°38'00" E

5380.83'

S 87°38'00" E

5380.83'

S 87°38'00" E

5380.83'

S 87°38'00" E

5380.83'

S 87°38'00" E

5380.83'

S 87°38'00" E

5380.83'

S 87°38'00" E