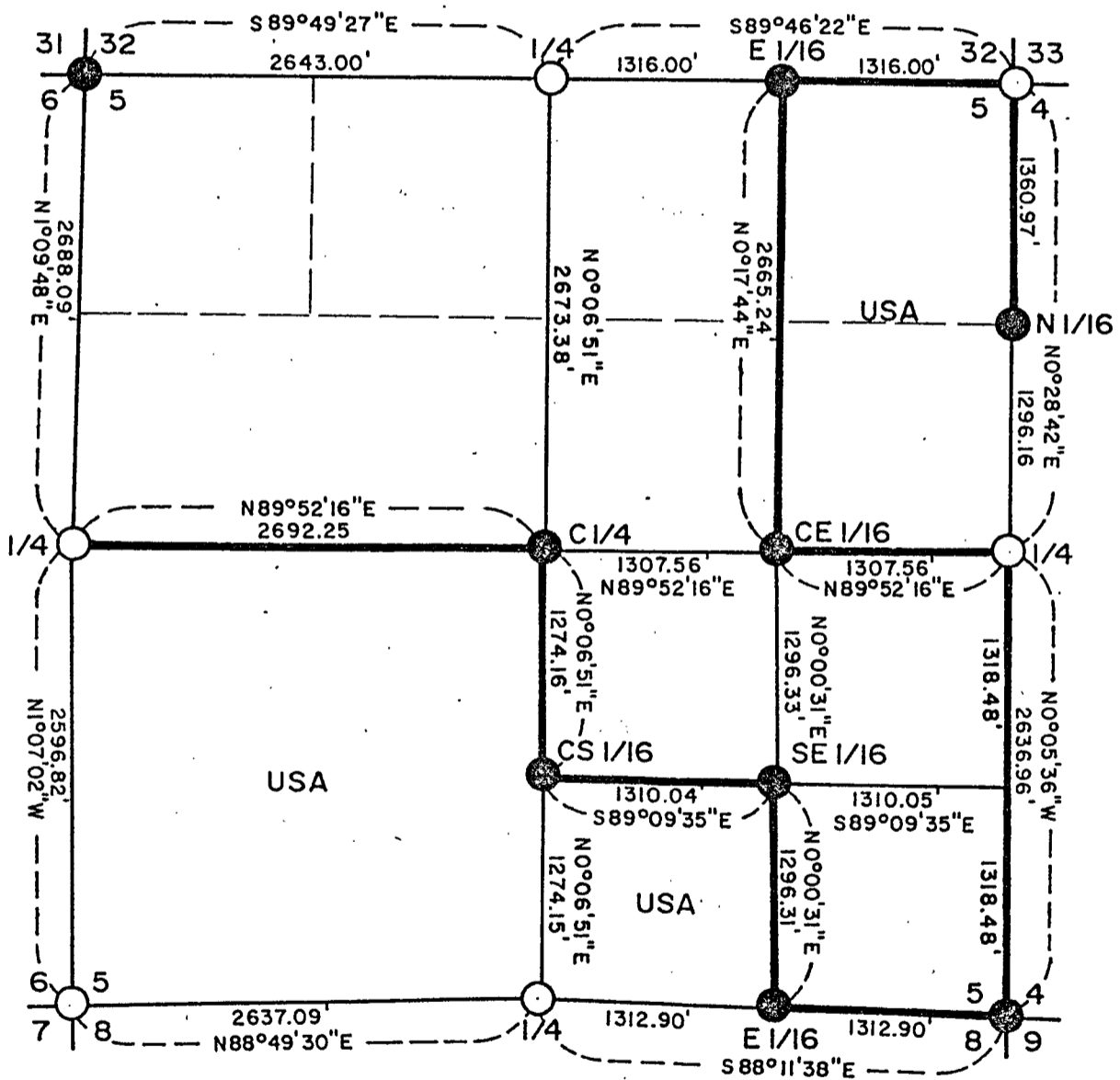
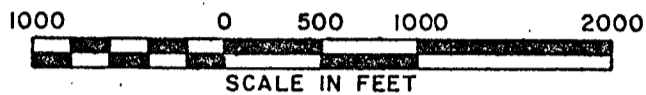


# PLAT OF SURVEY U.S. GOVERNMENT LAND

Being SW 1/4, E 1/2 NE 1/4, and SW 1/4 SE 1/4 all in Section 5  
Township 37 North, Range 16 East, Fourth Principal Meridian  
FOREST COUNTY, WISCONSIN



### LEGEND

- = 2" Driveable Aluminum Berntsen monument set.
- = 2" iron pipe with brass cap found in place
- USA = U.S. Government land = U.S. Government boundary

**CONVERSION FACTORS**  
Feet to Meters - 0.3048  
Meters to Feet - 3.2808

Stock No. 26273

Sheet 2 Of 4

SURVEY NOTES

This survey was made by the U.S. Department of Agriculture, Forest Service, for the purpose of establishing, marking and perpetuating the corners and boundary lines of the U.S. Government land on the perimeter and within Section 5, Township 37 North, Range 16 East of the Fourth Principal Meridian, Forest County, Wisconsin as shown on the plat map herewith.

The original Government subdivision of this township was made by James McBride in 1859, and the Township lines were surveyed by Artemas Curtis in 1857. Universal Oil Co. had records of some of the corners which their surveyors had established in the 1930 to 1940 era, but were lost in fires.

The corner positions recovered and established by this survey were monumented by monuments described in the map legend.

The bearings between corner positions are true bearings as determined by solar observations near the NW corner of Section 6 and NE corner of Section 3. The relative accuracy of the control traverse for corner establishment was one part in 10,000. The field measurements were done using a Wild T-2 theodolite and a Beetle 1600 infrared distance meter. The field notes and a copy of the plat of survey are on file in the Forest Supervisor's office at Rhinelander, Wisconsin.

Corners Recovered and Restored

1. Section Corner to Sections 5 and 6, T37N, R16E and Sections 31 and 32 of T38N, R16E.

Corner recovered marked by two old 4"x4" squared wood posts lying horizontal. The point was recovered and fell within 6 feet of the east west single proportioned point.

Cedar 8"	N48°E	52.28 feet
Balsam Fir 4"	S55°E	4.45 feet
Balsam Fir 6"	N20°W	23.70 feet
Sign Post	S02°W	1.60 feet

2. Section Corner to Sections 4 and 5, T37N, R16E and Sections 32 and 33 T38N, R16E.

Corner recovered and monumented in 1974 and recorded as document no. 106872, by Jean Resvick R.L.S.-802.

Spruce 3"	N67°E	9.07 feet
Spruce 8"	S38°E	13.04 feet
Spruce 6"	S51°W	16.07 feet
Spruce 4"	N55°W	12.38 feet
Sign Post	North	0.55 feet

3. Section Corner to Sections 4-5-8-9, T37N, R16E.

Corner recovered from the location of three original bearing tree stumps found and swamp call to the south, of 0.60 chains and lake call to the east of 3.35 chains. The Hemlock 10" N64W 40 lks, Hemlock 36" N24E 30 lks, and the Hemlock 12" S64W 50 lks were all rotting but evident in position.

Maple 6"	S12°W	6.14 feet
Y. Birch 10"	S49°W	26.94 feet
Maple 8"	N34°W	45.38 feet
Y. Birch 4"	N45°E	22.81 feet
Sign Post	South	1.50 feet

Stock No. 26273

Sheet 3 of 4

4. Section Corner to Sections 5-6-7-8, T37N, R16E.

Corner recovered and monumented in 1973 and recorded as document number 105100 by Jean Resvick R.L.S.-802

Cedar 10"	S 59°E	7.94 feet
Cedar 8"	N 66°W	16.08 feet
Sign Post	SE	1.00 feet

5. Quarter Corner to Sections 5, T37N, R16E and 32, T38N, R16E.

Corner recovered and monumented in 1973 and recorded as document number 105816 by Jean Resvick R.L.S.-802

Balsam 4"	N 39°E	13.23 feet
Balsam 3"	S 23°E	14.57 feet
Cedar 8"	S 85°E	18.97 feet
Sign Post	East	0.50 feet

6. Quarter Corner To Sections 4 and 5, T37N, R16E.

Corner recovered and monumented in 1973 and recorded as document number 105098 by Jean Resvick R.L.S.-802

Spruce 4"	N 15°E	12.18 feet
Spruce 4"	S 17°W	7.37 feet
Sign Post	NE	1.00 feet

7. Quarter Corner to Sections 5 and 8, T37N, R16E.

Corner recovered and monumented in 1973 and recorded as document number 105101 by Jean Resvick R.L.S.-802

Maple 9"	N 55°E	21.64 feet
Maple 9"	S 10°W	40.13 feet
Maple 18"	N 57°W	6.00 feet
Sign Post	SW	1.00 feet

8. Quarter Corner To Sections 5 and 6, T37N, R16E.

Corner recovered and monumented in 1973 and recorded as document number 105097 by Jean Resvick R.L.S.-802

Cedar 8"	S 37°E	26.98 feet
Cedar 11"	N 04°W	31.55 feet
Sign Post	NW	1.00 feet

CORNERS ESTABLISHED9. East One Sixteenth Corner between Sections 5, T37N, R16E and 32, T38N, R16E.Corner position established midway and on line between the N $\frac{1}{4}$  and NE corners of Section 5.

Cherry 6"	S 22°E	37.89 feet
Balsam Fir 9"	N 66°W	20.75 feet
Sign Post	South	1.10 feet

10. North Sixteenth Corner between Sections 4 and 5, T37N, R16E.Corner position established by single proportionate measurement between the NE and E $\frac{1}{4}$  corners of Section 5.

Spruce 5"	N 84°W	58.95 feet
Balsam Fir 9"	S 65°W	88.94 feet
Sign Post	West	1.15 feet

Stock No. 26273

Sheet 4 of 4

11. Center East One Sixteenth Corner of Section 5, T37N, R16E.Corner established midway and on line between the  $C\frac{1}{4}$  and  $E\frac{1}{4}$  corners of Section 5.

Spruce 4"	S 30°W	25.72 feet
Spruce 4"	N 46°E	20.41 feet
Sign Post	N 47°E	1.50 feet

12. Center One Quarter Corner of Section 5, T37N, R16E.

Corner position established at the straight line intersection point between opposite quarter corners on the periphery of Section 5.

Balsam Fir 9"	N 74°W	5.37 feet
Cedar 6"	N 40°E	8.80 feet
Sign Post	S 24°W	1.80 feet

13. Center South One Sixteenth Corner of Section 5, T37N, R16E.Corner position established midway and on line between the  $C\frac{1}{4}$  and  $S\frac{1}{4}$  corners of Section 5.

Cedar 10"	N 14°W	22.70 feet
Cedar 6"	S 72°W	13.65 feet
Sign Post	S 70°W	1.25 feet

14. South-East One Sixteenth Corner of Section 5, T37N, R16E.Corner position established by the straight line intersection point between opposite sixteenth corners on the periphery of the  $SE\frac{1}{4}$  of Section 5.

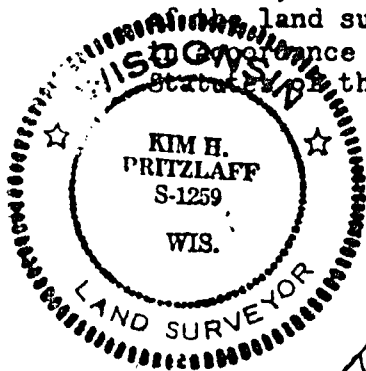
Cedar 8"	N 36°W	16.10 feet
Cedar 8"	S 52°W	14.51 feet
Sign Post	S 52°W	1.50 feet

15. East One Sixteenth Corner between Sections 5 and 8, T37N, R16E.Corner position established midway and on line between the  $S\frac{1}{4}$  and SE corners of Section 5.

Maple 8"	S 70°E	32.10 feet
Maple 8"	N 01°E	34.20 feet
Sign Post	S 58°W	1.70 feet

SURVEYOR'S AFFIDAVITState of Wisconsin)  
County of Forest )ss

I, Kim H Pritzlaff, Land Surveyor with Aaron Associates of Oconto Falls, Wisconsin, and a Registered Land Surveyor in the State of Wisconsin hereby certify that I have surveyed and subdivided Section 5, Township 37 North, Range 16 East, Fourth Principal Meridian, Forest County, Wisconsin. The plat map and survey are a correct representation of the land surveyed and subdivided. I have surveyed and subdivided said Section 5 in accordance with the rules of the survey of the public lands and with the Statute of the State of Wisconsin.



*Kim H. Pritzlaff*  
 Kim H Pritzlaff, Aaron Associates  
 R.L.S. State of Wisconsin  
 Certificate Number 1259

JUL 15 1982

*Dora C. James*

Date of Survey: 1982