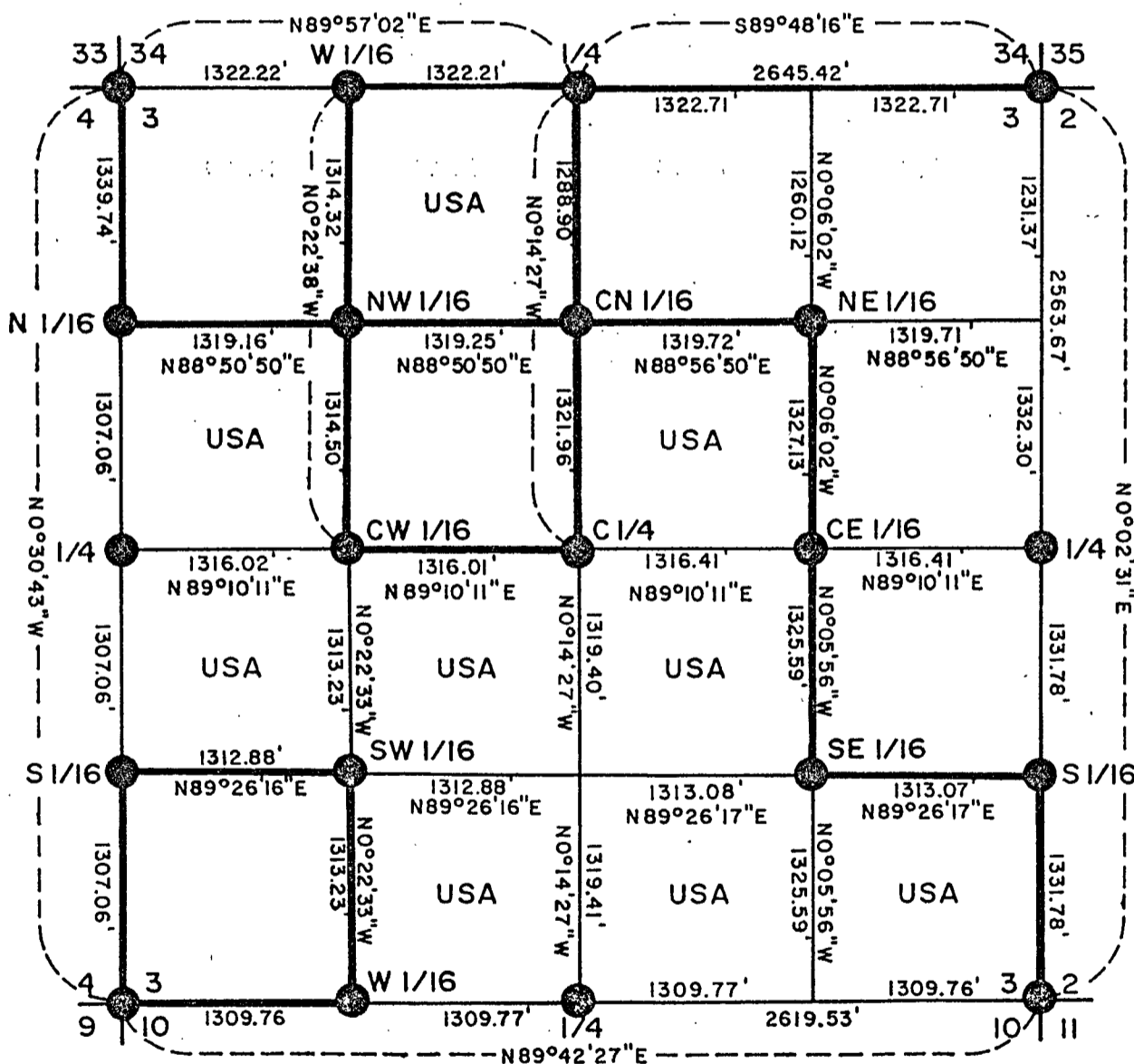
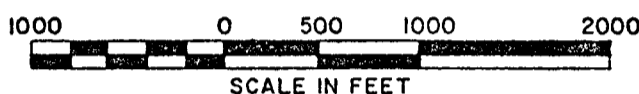


PLAT OF SURVEY U.S. GOVERNMENT LAND

Being SW1/4 NW1/4, NE1/4 NW1/4, SW1/4 NE1/4, W1/2 SE1/4,
SE1/4 SE1/4, E 1/2 SW1/4 and NW1/4 SW 1/4 all in Section 3,
Township 37 North, Range 16 East, Fourth Principal Meridian.
FOREST COUNTY, WISCONSIN



LEGEND

- = 2" Driveable Aluminum Berntsen monument set.
- = 2" iron pipe with brass cap found in place.
- USA = U.S. Government land — = U.S. Government boundary

CONVERSION FACTORS
Feet to Meters - 0.3048
Meters to Feet - 3.2808

Stock No. 26273

Sheet 2 of 6

SURVEY NOTES

This survey was made by the U. S. Department of Agriculture, Forest Service, for the purpose of establishing, marking and perpetuating the corners and boundary lines of the U.S. Government land on the perimeter and within Section 3, Township 37 North, Range 16 East of the Fourth Principal Meridian, Forest County, Wisconsin as shown on the plat map herewith.

The original Government subdivision of this township was made by James McBride in 1859, and the township lines were surveyed by Artemas Curtis in 1857. Universal Oil Company had records of some of the corners which their surveyors had established in the 1930 to 1940 era, but were lost in fires.

The corner positions recovered and established by this survey are monumented by monuments described in the map legend.

The bearings between corner positions are True bearings as determined by solar observations near the NW corner of Section 6, and the NE corner of Section 3. The relative accuracy of the control traverse for corner establishment was one part in 10,000. The field measurements were done using a Wild T-2 theodolite and a Beetle 1600 infrared distance meter. The field notes and a copy of the plat of survey are on file in the Forest Supervisor's office at Rhinelander, Wisconsin.

Corners Recovered and Restored and Established

1. Section corner to Sections 3 and 4, T37N, R16E and Sections 33 and 34 T38N, R16E.

Corner recovered marked by a 3" squared post which fell within tolerances of the proportioned point.

Cherry 6"	S 16°E	30.35 feet
Basswood 1 1/4"	S 08°E	61.26 feet
Maple 10"	S 82°W	43.15 feet
Cherry 8"	N 32°W	34.71 feet
Sign Post	Southwest	1.10 feet

2. Section corner to Sections 2 and 3, T37N, R16E and Sections 34 and 35, T38N, R16E.

Corner was recovered using the 3 bearing tree stumps found in the field and a metal location poster found near one of the original BT stumps.

Tamarack 1/4"	N 79°E	60.60 feet
Spruce 1/4"	S 19°E	26.92 feet
Spruce 1/4"	S 84°W	53.75 feet
Sign Post	N 40°W	1.30 feet

3. Section corner to Sections 2-3-10 and 11, T37N, R16E.

Corner was recovered marked by a 5" post point and a 1/4" Universal Oil Co. Post. Metal location tag was on a windfall Cedar to the NE and a 1 1/4" Cedar stump (original BT) found N 56 E and 21 lks.

Cedar 10"	N 44°E	36.39 feet
Cedar 5"	S 51°E	30.14 feet
Cedar 8"	S 03°E	18.92 feet
Cedar 10"	N 64°W	17.07 feet
Sign Post	Southwest	1.00 foot

4. Section corner to Sections 3-4-9-10, T37N, R16E.

Corner was restored using as best available evidence, a pickett found 2 1/4" beneath surface vegetation and 3 feet west of a dead four sided blazed spruce tree. Swamp call to the south of 5 chains fit this position. During surveys to the west of this section, corner positions fell within 6 feet of the four sided blazed trees we found. These trees were blazed as part of the Universal Oil Co. recovery program.

Stock No. 26273

Sheet 3 of 6

4. (continued)

Tamarack 5"	N 52°W	43.28 feet
Tamarack 6"	N 72°E	49.90 feet
Tamarack 5"	S 41°E	19.42 feet
W. Pine 6"	S 52°W	68.45 feet
Sign Post	S 22°W	1.36 feet

5. Quarter corner to Sections 3, T37N, R16E and 34, T38N, R16E.

Corner position was recovered using the original bearing tree located S 8°E, 162 lks recorded as a 6" Tamarack now lying down but in solid condition with DBH blaze prominent.

Tamarack 5"	N 14°W	51.13 feet
Tamarack 4"	N 48°E	45.90 feet
Tamarack 6"	S 78°E	25.35 feet
Tamarack 4"	S 34°W	26.32 feet
Sign Post	SW	1.50 feet

6. Quarter corner to Sections 2 and 3, T37N, R16E.

Corner position was restored by single proportionate measurement between the NE and the SE corners to Section 3.

Maple 8"	S 22°E	17.48 feet
Maple 6"	N 61°E	5.88 feet
Sign Post	S 30°E	1.20 feet

7. Quarter corner to Sections 3 and 10, T37N, R16E.

Corner position restored using single proportionate measurement between the SW and SE corners of Section 3.

Balsam Fir 9"	N 25°E	14.90 feet
Balsam Fir 7"	S 85°W	10.38 feet
Sign Post	S 07°W	1.40 feet

8. Quarter corner to Sections 3 and 4, T37N, R16E.

Corner position restored using single proportionate measurement between the NW and SW corners of Section 3.

Tamarack 4"	S 09°E	80.78 feet
Spruce 5"	N 30°E	91.40 feet
Sign Post	West	1.20 feet

9. West One Sixteenth Corner between Sections 3, T37N, R16E and Section 34, T38N, R16E.

Corner position established by single proportionate measurement between the NW and N $\frac{1}{4}$ corners of Section 3.

Balsam Fir 11"	S 20°W	55.94 feet
Balsam Fir 9"	S 59°E	36.14 feet
Sign Post	S 14°E	1.35 feet

Stock No. 26273

Sheet 4 of 6

10. North One Sixteenth Corner between Sections 3 and 4, T37N, R16E.

Corner position established by single proportionate measurement between the NW and $W\frac{1}{4}$ corners of Section 3.

Balsam Fir 8"	N 10°W	28.37 feet
Maple 6"	N 32°E	28.88 feet
Sign Post	S 32°W	1.25 feet

11. North-West One Sixteenth Corner of Section 3, T37N, R16E.

Corner position established by straight line intersection of opposite sixteenth corners on the periphery of the $NW\frac{1}{4}$ of Section 3.

Tamarack 5"	N 02°E	75.56 feet
Tamarack 3"	N 51°W	29.37 feet
Tamarack 4"	S 64°W	15.75 feet
Sign Post	S 25°W	1.50 feet

12. Center North One Sixteenth Corner of Section 3, T37N, R16E.

Corner position established by single proportionate measurement between the $C\frac{1}{2}$ corner of Section 3 and the $N\frac{1}{4}$ corner of Section 3.

Tamarack 4"	N 47°E	36.42 feet
Tamarack 4"	N 80°W	32.47 feet
Sign Post	S 28°E	1.46 feet

13. North-East One Sixteenth Corner of Section 3, T37N, R16E.

Corner position established by straight line intersection of opposite sixteenth corners on the periphery of the $NE\frac{1}{4}$ of Section 3.

Tamarack 5"	N 08°W	128.68 feet
Tamarack 4"	S 44°E	23.36 feet
Sign Post	S 35°W	1.25 feet

14. Center West One Sixteenth Corner of Section 3, T37N, R16E.

Corner position established midway and on line between the $W\frac{1}{4}$ and $C\frac{1}{4}$ corners of Section 3.

Spruce 5"	N 75°E	28.90 feet
Spruce 4"	N 45°W	20.95 feet
Sign Post	S 61°W	0.90 feet

15. Center One Quarter Corner of Section 3, T37N, R16E.

Corner established by straight line intersection of opposite Quarter corners on the periphery of Section 3.

Tamarack 5"	N 21°E	49.38 feet
Tamarack 6"	S 86°E	61.60 feet
Sign Post	S 57°E	1.15 feet

16. Center East One Sixteenth Corner of Section 3, T37N, R16E.

Corner established midway and on line between the $C\frac{1}{4}$ and $E\frac{1}{4}$ corners of Section 3.

Tamarack 4"	S 52°E	45.37 feet
Tamarack 5"	S 20°E	36.65 feet
Sign Post	S 78°W	1.20 feet

Stock No. 26273

Sheet 5 of 6

17. South One Sixteenth Corner between Sections 3 and 4, T37N, R16E.

Corner position established midway and on line between the SW and $W\frac{1}{4}$ corner of Section 3.

Tamarack 6"	S 58°W	98.21 feet
Tamarack 4"	S 88°E	47.50 feet
Sign Post	N 31°W	0.85 feet

18. South-West One Sixteenth Corner of Section 3, T37N, R16E.

Corner position established by straight line intersection of opposite sixteenth corners around the periphery of the $SW\frac{1}{4}$ of Section 3.

Spruce 4"	N 36°E	35.73 feet
Spruce 4"	N 72°E	54.63 feet
Sign Post	N 45°E	1.17 feet

19. South-East One Sixteenth Corner of Section 3, T37N, R16E.

Corner position established by straight line intersection of opposite sixteenth corners on the periphery of the $SE\frac{1}{4}$ of Section 3.

Maple 6"	S 02°E	14.40 feet
Maple 10"	N 55°W	12.90 feet
Sign Post	S 60°W	1.75 feet

20. South One Sixteenth Corner between Sections 2 and 3, T37N, R16E.

Corner position established midway and on line between the $E\frac{1}{4}$ and SE corners of Section 3.

Balsam Fir 8"	N 72°W	9.10 feet
Balsam Fir 6"	N 52°E	4.15 feet
Sign Post	S 32°W	1.20 feet

21. West One Sixteenth Corner between Sections 3 and 10, T37N, R16E.

Corner position established midway and on line between the SW and $S\frac{1}{4}$ corners of Section 3.

Maple 8"	N 49°E	8.40 feet
Balsam Fir 8"	S 48°E	21.20 feet
Sign Post	S 50°E	1.72 feet

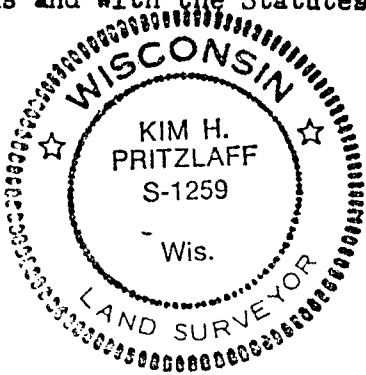
Stock No. 26273

Sheet 6 of 6

SURVEYOR'S AFFIDAVIT

State of Wisconsin)
County of Forest)ss

I, Kim H Pritzlaff, Land Surveyor, Aaron Associates of Oconto Falls, Wisconsin, and a Registered Land Surveyor in the State of Wisconsin hereby certify that I have surveyed and subdivided Section 3, Township 37 North, Range 16 East, Fourth Principal Meridian, Forest County, Wisconsin. The plat map and survey notes are a correct representation of the land surveyed and subdivided. I have surveyed and subdivided said section in accordance with the rules for the survey of the public lands and with the Statutes of the State of Wisconsin.



Kim H. Pritzlaff

Kim H Pritzlaff, Aaron Associates
RLS State of Wisconsin
Certificate No. 1259

Date of Survey: 1982



JUL 15 1982

Dora C. James