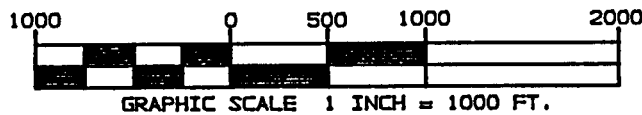
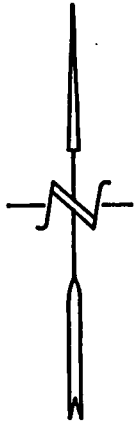


To Forest Cty.
Corrected
w/ Larry Signatus

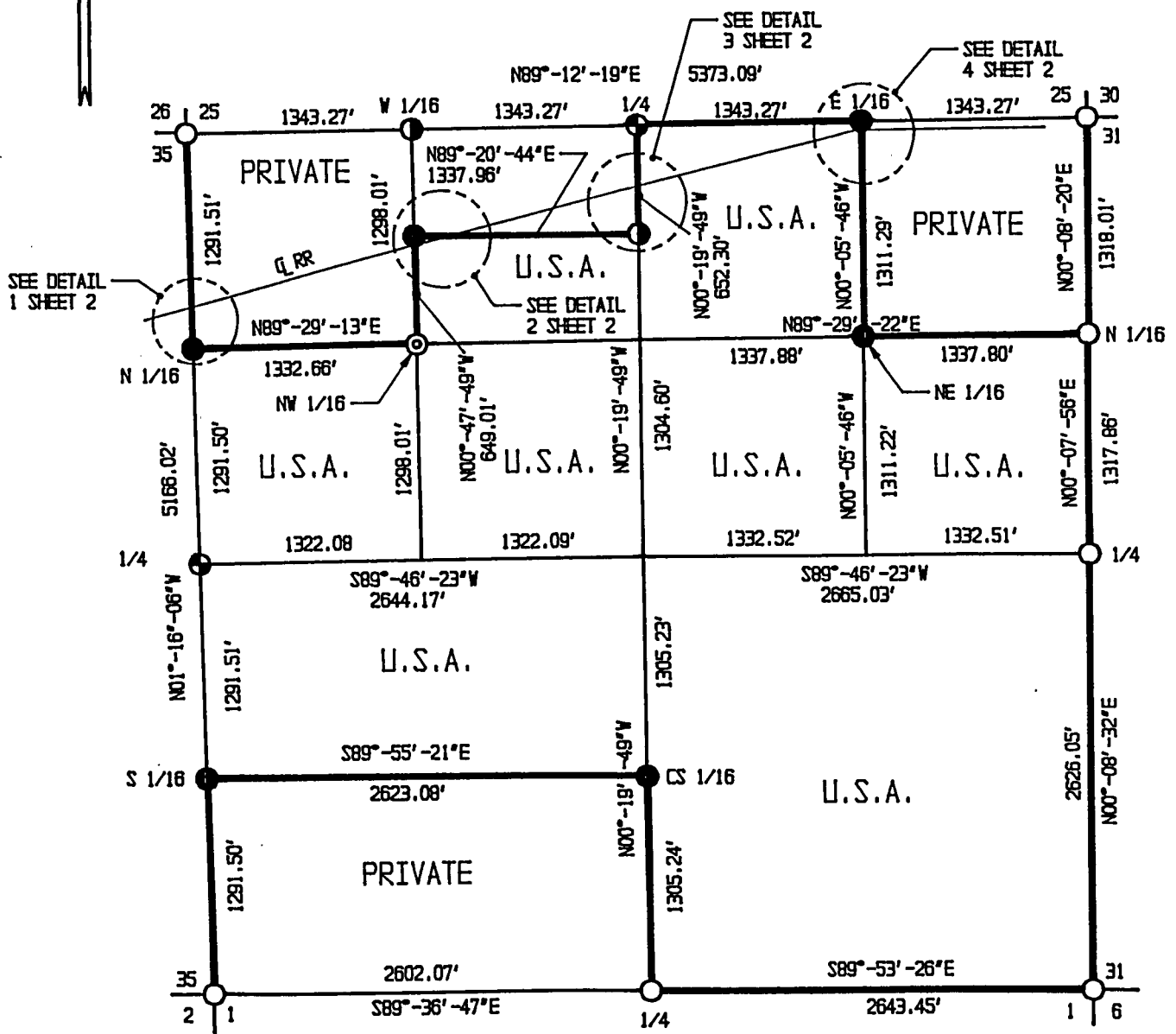
PLAT OF SURVEY

U.S. GOVERNMENT LAND
BEING ALL OF SECTION 36,
EXCEPTING

NW1/4-NW1/4, N1/2-NE1/4-NW1/4, NE1/4-NE1/4, S1/2-SW1/4,
TOWNSHIP 37 NORTH, RANGE 15 EAST
FOURTH PRINCIPAL MERIDIAN
FOREST COUNTY, WISCONSIN



BEARINGS BASED ON
SOLAR OBSERVATION



NOTE: SEE SHEET 2 FOR DETAILS OF RAILROAD LINE CROSSINGS

LEGEND

- FOUND 2 1/2" ALUMINUM CAPPED PIPE IN PLACE
- 1" X 36" ALUMINUM CAPPED MONUMENT - SET THIS SURVEY
- ⦿ 1" X 60" ALUMINUM CAPPED MONUMENT - SET THIS SURVEY
- ⊕ 2" X 36" ALUMINUM CAPPED MONUMENT - SET THIS SURVEY
- ⊙ 1" X 30" GALVANIZED PIPE WITH PLASTIC CAP - SET THIS SURVEY

— BOUNDARY LINE SET TO FOREST SERVICE STANDARDS.

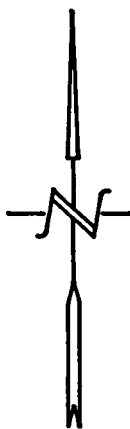
PLAT OF SURVEY

SHEET 2 OF 7

DETAILS OF
RAILROAD LINE CROSSING OF
WISCONSIN CENTRAL RAILROAD

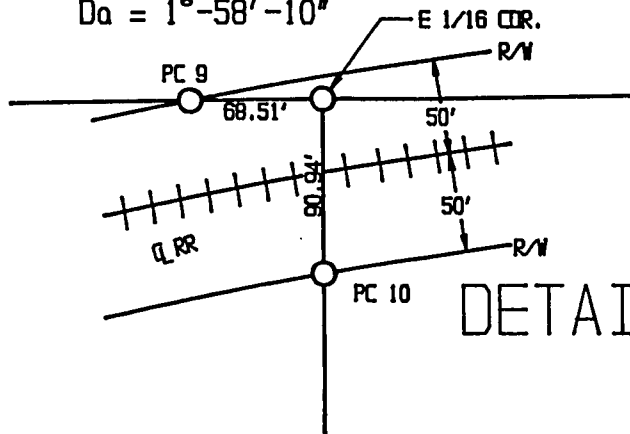
LEGEND

- 1" X 36" ALUMINUM CAPPED MONUMENT SET
- 1" X 60" ALUMINUM CAPPED MONUMENT SET
- ⊙ 2" X 36" ALUMINUM CAPPED MONUMENT SET

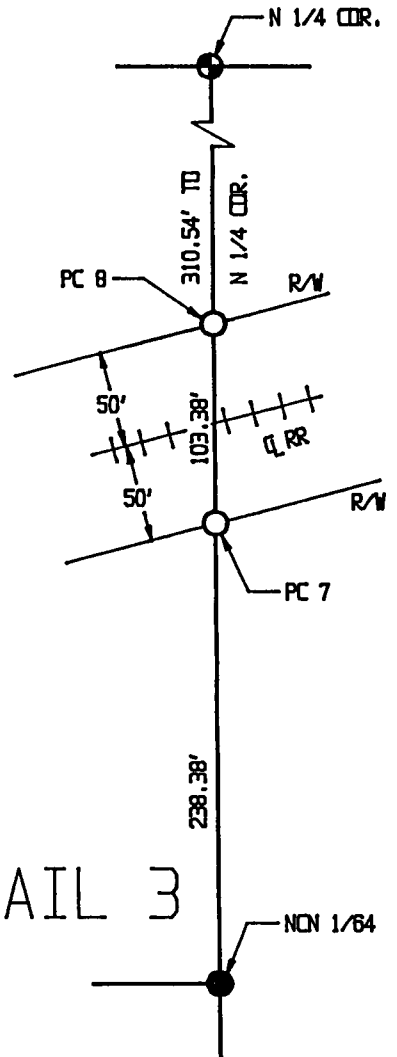


RR CURVE DATA

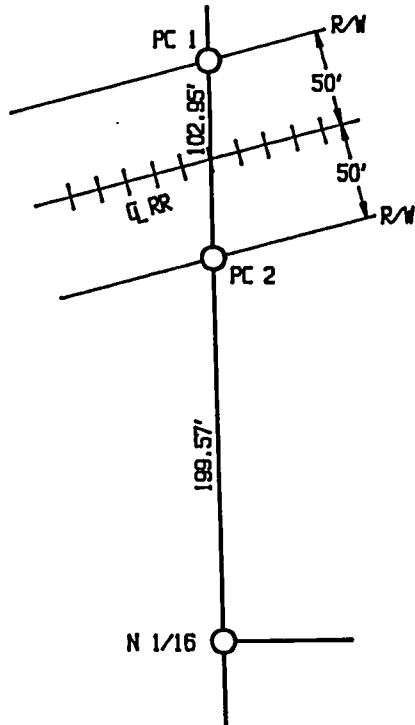
$R = 2909.25$
 $\Delta a = 1^{\circ}-58'-10''$



DETAIL 4

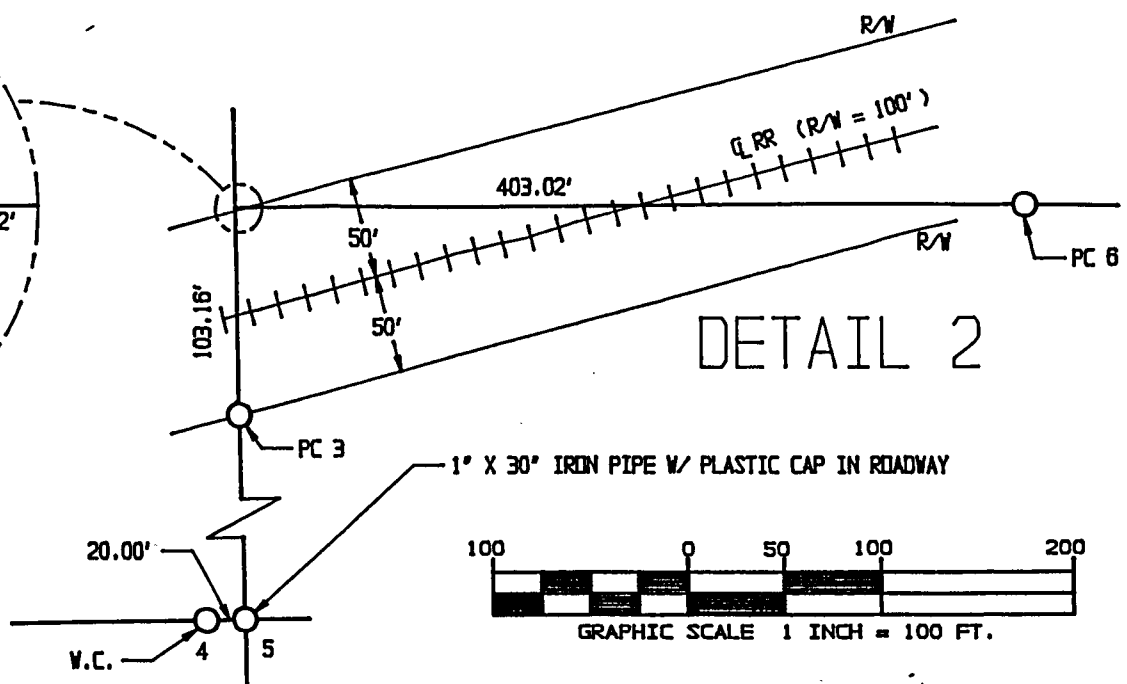
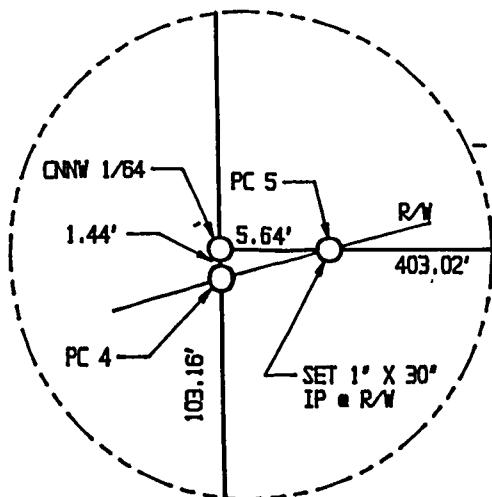


DETAIL 3



DETAIL 1

SCALE: 1"=10'



DETAIL 2



GRAPHIC SCALE 1 INCH = 100 FT.

SECTION 36, T37N-R15E
SURVEY NOTES

This survey was made by Coleman Engineering Company for the U.S. Department of Agriculture-Forest Service under Contract No. 53-56A6-4-00936, Order No. 43-56A6-4-3062 for the purpose of restoring and establishing corners on the perimeter of Section 36, for establishing subdivisional corners within Section 36, and for locating and marking the boundaries of U.S. Government lands along the perimeter and within Section 36, Township 37 North, Range 15 East, Fourth Principal Meridian, Forest County, State of Wisconsin.

The original township line survey was completed by Artemas Curtis in 1857. The township subdivision survey was completed by J. L. Nowlin in 1865.

The corner positions recovered, restored and established by this survey are marked by the monument described in the map legend.

The corner positions established were located to a minimum accuracy of 1 part in 5000.

The bearings between corner positions are true bearings as determined by solar observation.

The field notes of this survey and a copy of this plat are on file in the Forest Supervisor's office in Rhinelander, Wisconsin.

CORNERS RECOVERED OR RESTORED

1. Section corner common to Sections 25, 26, 35 and 36. Recovered corner, as monumented by Milo Stefan, RLS in 1981.

Established Corner References:

Wood Fence Post		North	15.46 feet
Wood Fence Post		S11°W	7.20 feet
Wood Fence Post		S55°W	1.88 feet
Steel Sign Post		South	2.35 feet

2. Section corner common to Section 25 and 36, T37N-15E and Section 30 and 31, T37N-R16E. Recovered corner as monumented by Milo Stefan, RLS, n 1982.

Corner References:

Tamarack	8"	N50°E	27.89 feet
Tamarack	6"	N33°W	39.63 feet
Tamarack	6"	N12°E	32.20 feet
Steel Sign Post		Northeast	0.8 feet

3. North sixteenth corner common to Section 36, T37N-R15E and Section 31, T37N-R16E. Recovered corner, as monumented by Milo Stefan, RLS, in 1983.

Corner References:

Sugar	7"	N82°E	21.81 feet
Sugar	6"	S11°E	29.25 feet
Hemlock	20"	N28°W	29.79 feet
Steel Sign Post		South	1.60 feet

4. Quarter corner common to Section 36, T37N-R15E and Section 31, T37N-R16E.
Recovered corner, as monumented by Milo Stefan, RLS, in 1983.

Corner References:

Basswood	6"	S80°E	5.36 feet
Sugar	8"	S29°W	41.69 feet
Sugar	6"	N41°W	55.29 feet
Steel Sign Post		South	3.40 feet

5. Section corner common to Section 35 and 36, T37N-R15E and Section 1 and 2, T36N-R15E. Recovered corner, as monumented by Philip T. Hansen, RLS, in 1975. Certificate on file in Forest County - Document No. 108488.
6. Quarter corner common to Section 36, T37N-R15E and Section 1, T36N-R15E. Corner recovered, as monumented by Philip T. Hansen, RLS, in 1975. Certificate on file in Forest County - Document No. 108489.
7. Township corner common to Section 36, T37N-R15E, Section 1, T36N-R15E, Section 31, T37N-R16E, and Section 6, T36N-R16E. Corner recovered, as set by Philip T. Hansen, RLS, in 1975. Certificate on file in Forest County - Document No. 108490.

CORNERS ESTABLISHED

1. Quarter corner common to Section 25 and 36. Established corner position by single proportionate methods between the northeast corner and northwest corner of Section 36.

Established Corner References:

Cedar	10"	N48°E	14.60 feet
Cedar	6"	S30°E	45.76 feet
Cedar	9"	S59°W	13.39 feet
Cedar	8"	N62°W	4.51 feet
Steel Sign Post		Southeast	1.29 feet

2. West sixteenth corner common to Section 25 and 36. Established corner position at the mid-point of a straight line between the north quarter corner and northwest corner of Section 36.

Established Corner References:

Cedar	8"	N39°E	23.07 feet
Tamarack	9"	S57°E	21.15 feet
Steel Sign Post		West	1.56 feet

3. East sixteenth corner common to Section 25 and 36. Established corner position at the mid-point of a straight line between the north quarter corner and northeast corner of Section 36.

Established Corner References:

Maple	5"	N66°E	47.44 feet
Cedar	8"	N69°W	59.61 feet
Steel Sign Post		Southwest	1.40 feet

4. Center north northwest sixty-fourth corner Section 36. Established corner position at the mid-point of a straight line between the northwest sixteenth corner and the west sixteenth corner common to Section 25 and 36.

Established Corner References:

Balsam	5"	S87°E	17.54 feet
Aspen	7"	S06°W	6.56 feet
Steel Sign Post		Southeast	1.16 feet

5. North center north sixty-fourth corner Section 36. Established corner position at the mid-point of a straight line between the north quarter corner and the calculated center north sixteenth corner of Section 36.

Established corner references:

Cedar	8"	N15°E	53.38 feet
Cedar	6"	N88°E	40.41 feet
Steel Sign Post		Southeast	1.10 feet

6. North sixteenth corner common to Section 35 and 36. Established corner position at the mid-point of a straight line between the northwest corner and the west quarter corner of Section 36.

Established Corner References:

Balsam	4"	N77°E	17.75 feet
Balsam	5"	S38°E	43.40 feet
Steel Sign Post		Southwest	1.30 feet

7. Northwest sixteenth corner Section 36. Established corner position at the intersection of the north and west sixteenth lines of Section 36. Corner falls in gravel roadway.

Established Corner References:

Witness Corner	1"x36"	West	20.20 feet
Sugar	4"	N67°E	29.78 feet
Sugar	4"	S51°E	24.90 feet
Steel Sign Post		West	20.38 feet

8. Northeast sixteenth corner Section 36. Established corner position at the intersection of the north and east sixteenth lines of Section 36.

Established Corner References:

Sugar	8"	S62°E	6.04 feet
Sugar	7"	N28°W	19.85 feet
Steel Sign Post		Southwest	1.16 feet

9. Quarter corner common to Section 35 and 36. Established corner position by single proportionate methods between the northwest corner and southwest corner of Section 36.

Established Corner References:

Black Cherry	6"	N33°E	25.62 feet
Spruce	10"	S11°E	89.80 feet
Spruce	14"	S85°W	58.64 feet
Maple in Clump	11"	N40°W	43.41 feet
Steel Sign Post		North	1.40 feet

10. South sixteenth corner common to Section 35 and 36. Established corner position at the mid-point of a straight line between the west quarter corner and southwest corner of Section 36.

Established Corner References:

Maple	5"	East	24.58 feet
Maple	6"	S85°W	11.46 feet
Steel Sign Post		Northwest	1.28 feet

11. Center-south sixteenth corner Section 36. Established corner position at the mid-point of a straight line between the south quarter corner and the calculated center quarter corner of Section 36.

Established Corner References:

Sugar	7"	S79°W	26.31 feet
Sugar	9"	N51°W	22.19 feet
Steel Sign Post		N15°E	2.30 feet

12. Property corner - 1. Established corner position at the intersection of the west line of Section 36 with the north line of the Wisconsin Central Railroad right-of-way. Corner is 302.52 feet north of the north sixteenth corner common to Section 35 and 36.
13. Property corner - 2. Established corner position at the intersection of the west line of Section 36 with the south line of the Wisconsin Central Railroad right-of-way. Corner is 199.57 feet north of the north sixteenth corner common to Section 35 and 36.
14. Property corner - 3. Established corner position at the intersection of the south line of Wisconsin Central Railroad right-of-way and the east line of the NW-1/4 of the NW-1/4 Section 36. Corner is 104.60 feet south of the center-north-northwest sixty-fourth corner.
15. Property corner - 4. Established corner position at the intersection of the north line of Wisconsin Central Railroad right-of-way and the east line of the NW-1/4 of the NW-1/4 Section 36. Corner is 1.44 feet south of the center-north-northwest sixty-fourth corner.
16. Property corner - 5. Established corner position at the intersection of the north line of Wisconsin Central Railroad right-of-way and the north line of the S 1/2 of the NE-1/4 of the NW-1/4 Section 36. Corner is 5.64 feet east of the center-north-northwest sixty-fourth corner.
17. Property corner - 6. Established corner position at the intersection of the south line of Wisconsin Central Railroad right-of-way and the north line of the S 1/2 of the NE-1/4 of the NW-1/4 Section 36. Corner is 408.66 feet east of the center-north-northwest sixty-fourth corner.
18. Property corner - 7. Established corner position at the intersection of the south line of Wisconsin Central Railroad right-of-way and the east line of the NE-1/4 of the NW-1/4 Section 36. Corner is 238.38 feet north of the north-center-north sixty-fourth corner.
19. Property corner - 8. Established corner position at the intersection of the north line of Wisconsin Central Railroad right-of-way and the east line of the NE-1/4 of the NW-1/4 Section 36. Corner is 341.76 feet north of the north-center-north sixty-fourth corner.
20. Property corner - 9. Established corner position at the intersection of the north line of Wisconsin Central Railroad right-of-way and the north line of Section 36. Corner is 68.51 feet west of the east sixteenth corner common to Sections 25 and 36.

21. Property corner - 10. Established corner position at the intersection of the south line of Wisconsin Central Railroad right-of-way and the east line of the NW-1/4 of the NE-1/4 Section 36. Corner is 90.94 feet south of the east sixteenth corner common to Sections 25 and 36.

SURVEYOR'S AFFIDAVIT

State of Wisconsin)
) ss.
County of Forest)

I, John R. Garske, Land Surveyor for Coleman Engineering Company and a registered surveyor in the State of Wisconsin, hereby certify that this survey of Section 36, Township 37 North, Range 15 East, Fourth Principal Meridian, State of Wisconsin, was performed under my direct responsible supervision.

The plat map and the notes herewith are a correct representation of the land surveyed and divided. I have surveyed and subdivided said section in accordance with the rules for survey of the public lands and with the statutes of the State of Wisconsin.



John R. Garske
John R. Garske
Coleman Engineering Company
R.L.S., State of Wisconsin
License No. S-1685

Plat ready for filing:

James L. Becker
District Ranger

Date of Survey: 1995

