

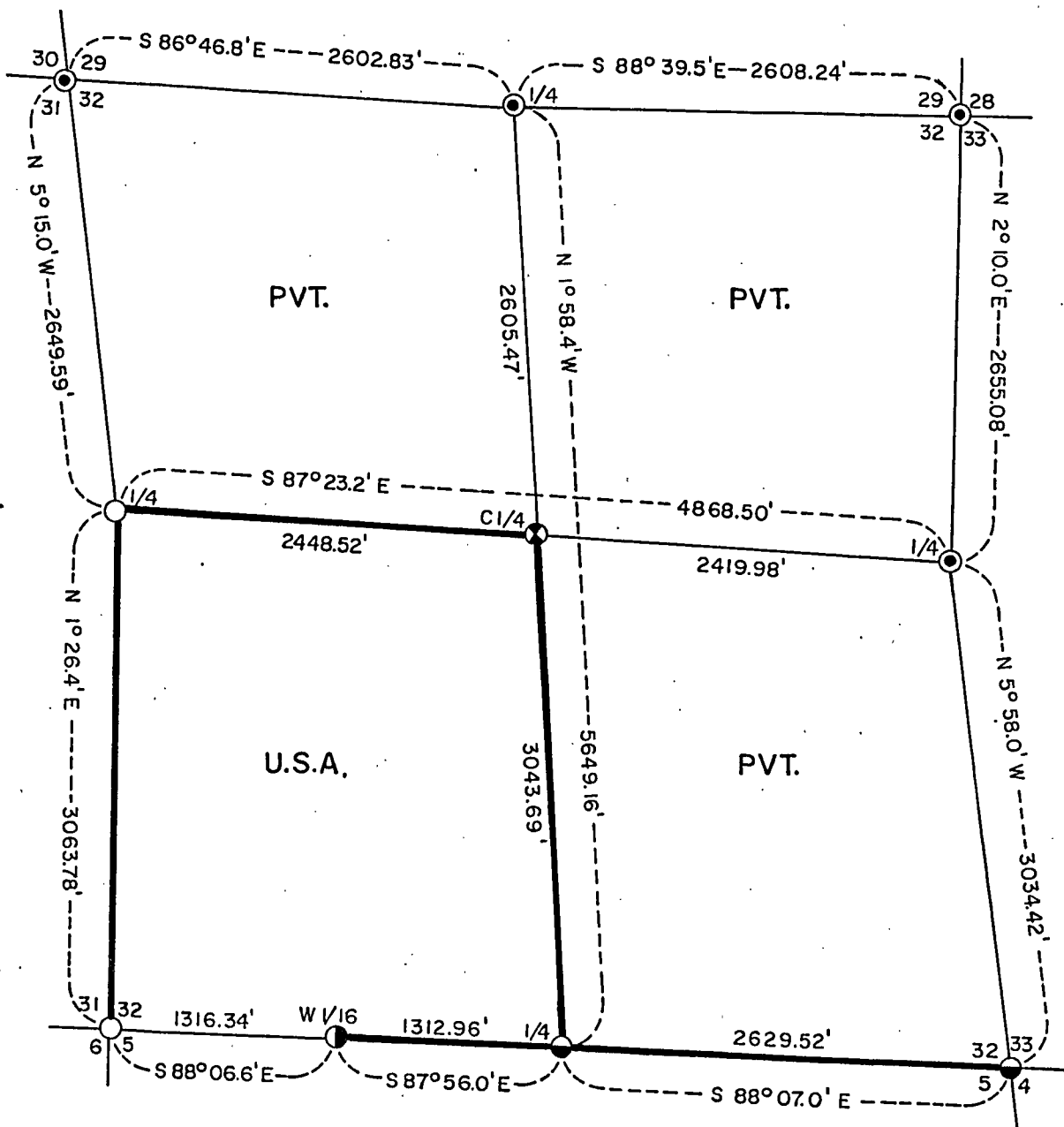
Stock No. 26273

SHEET 1 OF 4

PLAT OF SURVEY U.S. GOVERNMENT LAND

Being the SW1/4 of Section 32

Township 37 North, Range 15 East, Fourth Principal Meridian
FOREST COUNTY, WISCONSIN



LEGEND

- ⊙ Railroad Spike in Surface of Blacktop
- ⊗ 2"x 60" Aluminum Monument
- 2"x 30" Aluminum Monument
- 2"x 36" Aluminum Monument
- Forest County Monument

— Boundary U.S. Government Land, Marked and Posted
to U.S.F.S. Standards

Conversion Factors:
Feet to Meters - 3.280833
Meters to Feet - 0.304801

Stock No. 26273

Sheet 2 of 4

SURVEY NOTES

This survey was made by the U. S. Department of Agriculture, Forest Service, for the purpose of restoring and establishing corners on the perimeter of Section 32, for establishing subdivisional corners within Section 32, and for locating and marking the boundaries of U. S. Government land on their perimeter and within Section 32, Township 37 North, Range 15 East, Fourth Principal Meridian, Forest County, Wisconsin.

The U. S. Government lands in this section were acquired September 28, 1938.

The original Government subdivision survey of this township was made in 1865.

The corner positions recovered, restored, and established by this survey are marked by the monument described in the map legend.

The corner positions established were located to an accuracy of one part in 3000.

The bearings between corner positions are true bearings as determined by solar observations.

The field notes of this survey and a copy of this plat are on file in the Forest Supervisor's Office at Rhineland, Wisconsin.

CORNERS RECOVERED AND RESTORED1. Section Corner to Sections 5, 6, 31, and 32.

Corner monumented by S-498. Certificate filed as Document No. 108696 in Forest County Courthouse on February 4, 1976.

Corner References:

| | | | |
|-----------------|----|---------|------------|
| Red Maple | 8" | N.68°E. | 11.15 feet |
| White Spruce | 7" | S.66°W. | 19.18 feet |
| White Spruce | 9" | N.69°W. | 23.63 feet |
| Steel Sign Post | 7' | South | 1.90 feet |

2. Section Corner to Sections 29, 30, 31, and 32.

Corner monumented by S-1537. Certificate filed as Document No. 120539 in Forest County Courthouse on September 25, 1981.

Corner References:

| | | | |
|-----------------------|-----|---------|------------|
| White Pine | 12" | N.24°E. | 44.46 feet |
| Witness Corner | | South | 40.00 feet |
| Power Pole #3715-23W1 | | S.19°W. | 31.42 feet |
| White Pine | 11" | S.48°W. | 93.50 feet |
| Steel Sign Post | | South | 41.00 feet |

3. Section Corner to Sections 28, 29, 32, and 33.

Corner monumented by S-887. Certificate filed as Document No. 109436 in Forest County Courthouse on June 11, 1976.

Corner References:

| | | |
|-------------------------------|---------|------------|
| North Rail of Soo Line Tracks | South | 28.05 feet |
| Telephone Pole (1400) | N.56°W. | 35.40 feet |
| Forest County | | |
| Aluminum Monument | N.41°E. | 45.51 feet |

Stock No. 26273

Sheet 3 of 4

4. Section Corner to Sections 4, 5, 32, and 33.

Corner was restored by evidence of a post point in a mound of stone and cut off bearing trees, all of which were buried under the road surface and dug up with a backhoe.

Corner References:

| | | | |
|-----------------------|----------|---------|------------|
| Cedar | 8" | N.54°E. | 44.09 feet |
| Cedar | 8" | S.82°E. | 38.51 feet |
| Boulder | 3'x3'x4' | S.84°W. | 34.41 feet |
| Power Pole #3715-32R1 | | N.33°W. | 64.88 feet |
| Steel Sign Post | | East | 13.80 feet |

5. Quarter Corner to Sections 31 and 32.

Corner monumented by S-498. Certificate filed as Document #108697 in Forest County Courthouse on February 4, 1976.

Corner References:

| | | | |
|-----------------|-----|---------|------------|
| Cedar | 9" | N.43°E. | 18.00 feet |
| Sugar | 10" | S.21°W. | 20.22 feet |
| Sugar | 11" | N.83°W. | 27.27 feet |
| Steel Sign Post | | South | 0.85 feet |

6. Quarter Corner to Sections 29 and 32.

Corner restored by perpetuation of survey done by Glen Barker and tie-offs made to the corner by Mike Hess.

Corner References:

| | | | |
|------------------------|-----|---------|-------------|
| White Pine | 13" | N.61°E. | 110.27 feet |
| Power Pole #T3715-32E1 | | S.70°E. | 94.90 feet |
| White Pine | 12" | N.24°W. | 88.07 feet |
| Steel Sign Post | 6' | South | 25.95 feet |

7. Quarter Corner to Sections 32 and 33.

Corner restored at intersection of east-west fence line and the curve P.I. of a north-south road as best remaining evidence of original corner.

Corner References:

| | | | |
|------------------------|----|---------|------------|
| Sugar | 7" | N.59°E. | 84.16 feet |
| Sugar | 7" | S.39°E. | 56.13 feet |
| Power Pole #3715-32E17 | | N.57°W. | 26.15 feet |
| Steel Sign Post | 6' | West | 12.90 feet |

8. Quarter Corner to Sections 5 and 32.

Corner monumented by S-1558. Certificate filed as Document No. 119855 in Forest County Courthouse on May 26, 1981.

Corner References:

| | | | |
|-----------------|-----|---------|------------|
| Sugar | 4" | N.65°E. | 20.39 feet |
| Sugar | 4" | S.89°W. | 34.59 feet |
| Basswood | 11" | N.5°W. | 12.53 feet |
| Steel Sign Post | | North | 1.00 feet |

CORNERS ESTABLISHED1. Center Quarter Corner of Section 32, T.37N., R.15E.

Corner position established at the intersection of the north-south and east-west quarter lines of Section 32.

Corner References:

| | | | |
|-----------------|-----|---------|------------|
| Cedar | 9" | S.10°E. | 33.18 feet |
| Cedar | 9" | S.25°W. | 58.55 feet |
| Tamarack | 10" | N.4°W. | 64.72 feet |
| Steel Sign Post | 6' | West | 1.10 feet |

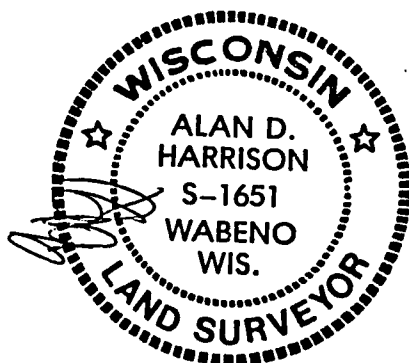
Stock No. 26273

Sheet 4 of 4

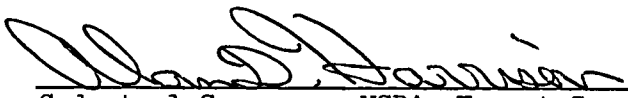
SURVEYOR'S AFFIDAVITState of Wisconsin]
County of Forest] SS

I, Alan D. Harrison, Cadastral Surveyor, USDA, Forest Service, and a registered surveyor in the State of Wisconsin, hereby certify that I have surveyed and subdivided Section 32, Township 37 North, Range 15 East, Fourth Principal Meridian, State of Wisconsin.

The plat map and the notes herewith are a correct representation of the land surveyed and divided. I have surveyed and subdivided said section in accordance with the rules for survey of the public lands and with the statutes of the State of Wisconsin.



Date of Survey: 1986


Cadastral Surveyor, USDA, Forest Service
R.L.S., State of Wisconsin
Certificate S-1651

Plat Ready For Filing:


District Ranger

