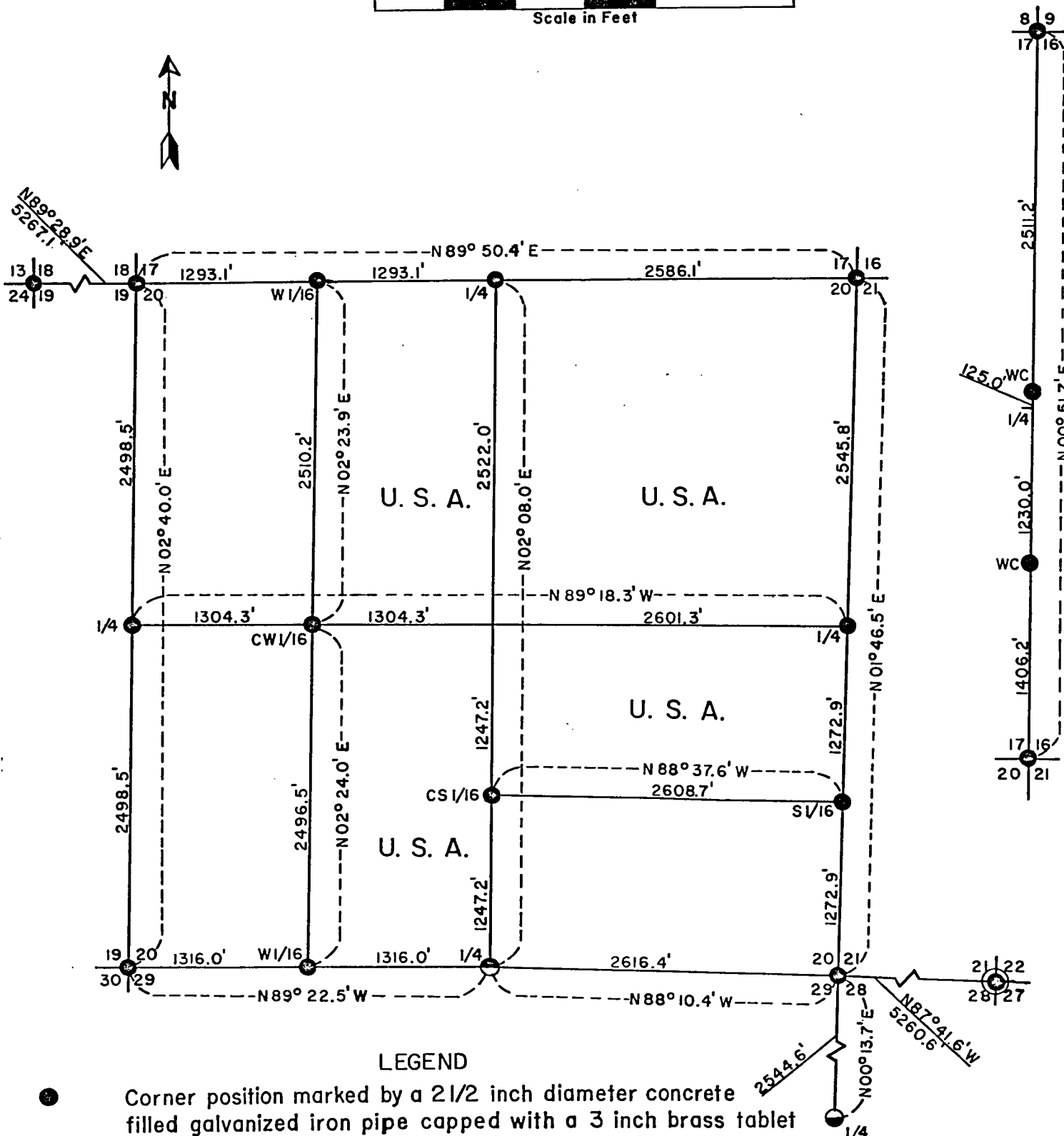
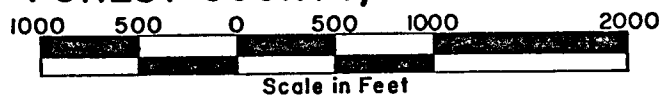


Copy.

Sheet 1 of 5

Being the NE1/4, N1/2 SE1/4, E1/2 NW1/4 and E1/2 SW1/4 in Section 20
Township 37 North, Range 15 East, Fourth Principal Meridian
FOREST COUNTY, WISCONSIN



LEGEND

- Corner position marked by a 2 1/2 inch diameter concrete filled galvanized iron pipe capped with a 3 inch brass tablet stamped to identify corner. 257
- Corner position marked in highway by PK nail. Two reference monuments, as above, placed off road.
- WC Witness corner.
- 1/4 corner unmarked in pond.
- Corner position marked in highway by railroad spike.
- ⊙ Corner position marked by 2 1/2 inch diameter aluminum pipe monument.

U.S.A. U.S. Government Land.

CONVERSION FACTOR:

Feet to Meters-0.304801

Meters to Feet-3.280833

COPY

Sheet 2 of 5

SURVEY NOTES

This survey was made by the U.S. Department of Agriculture, Forest Service, for the subdivision of Section 20, Township 37 North, Range 15 East, Fourth Principal Meridian, Forest County, Wisconsin. The purpose of the survey was to locate and mark the corners of U.S. Government land.

This U.S. Government land in Section 20 was acquired in the years 1935-38.

The original Government subdivision survey of this township was made in 1865.

The corner positions recovered, restored, and established by this survey are marked by the monument described in the map legend.

The bearings between corner positions are true bearings as determined by reference to Solar observations. The relative accuracy of the traverse control for corner restoration and establishment was one part in 3000.

The field survey notes and a copy of the plat of survey are on file in the Forest Supervisor's Office at Rhinelander, Wisconsin.

CORNERS RECOVERED AND RESTORED1. Section Corner to Sections 8-9-16-17.

Corner position filed as Document No. 104443 on November 5, 1973 in Forest County records.

2. Section Corner to Sections 13-18-19-24.

Corner position monumented and filed as Document No. 113302 on February 13, 1978 in Forest County records.

3. Section Corner to Sections 17-18-19-20.

Corner position East of State Highway No. 139 restored from 1934 highway station ties to corner. Corner monument set 0.4 feet below road surface.

Corner references:

Spruce 8"	N38°E	46.4 feet
Scotch pine 14"	S08°E	28.6 feet
Scotch pine 11"	S28°W	39.9 feet
Red pine 15"	N12°W	26.3 feet

4. Section Corner to Sections 16-17-20-21.

Corner position restored on centerline intersection of east-west and north-south roads as best remaining evidence of original corner.

Corner references:

Red pine 12"	S42°W	73.8 feet
White spruce 10"	N40°W	72.9 feet
Power pole	N75°E	40.1 feet

5. Section Corner to Sections 19-20-29-30.

Corner position filed October 18, 1972 as Document No. 102400 and filed July 2, 1976 as Document No. 109586 in Forest County records.

COPY

Sheet 3 of 5

6. Section Corner to Sections 20-21-28-29.

Corner position in east shoulder of north-south road restored by double proportionate measurement between the nearest recovered corners in each of the cardinal directions from the corner position.

Corner references:

Tamarack 8"	N59°E	53.6 feet
Tamarack 6"	S58°W	44.1 feet
Tamarack 7"	N62°W	40.0 feet
Center road	West	10.0 feet

7. Section corner to sections 21-22-27-28.

Corner monumented by S-498. Corner certificate filed as Document No. 110099 in Forest County records on September 8, 1976.

8. Quarter Corner to Sections 16-17.

Corner position restored at midpoint and on line between section corners. Corner position falls in pond. Established witness corners on the North and South side of pond on section line as references to quarter corner.

Corner references:

1. Witness Corner	S1°46.5'W	1230.0 feet
White birch 7"	S15°E	9.6 feet
White birch 6"	N71°W	13.8 feet
Sign post	Southwest	0.5 feet
2. Witness Corner	N1°46.5E	125.0 feet
White birch 9"	S68°W	4.6 feet
Maple 3"	N35°E	5.1 feet
Sign post	Northwest	0.5 feet

9. Quarter Corner to Sections 17-20.

Corner position restored at midpoint and on line between the northwest corner and the northeast corner of Section 20.

Corner references:

White spruce 17"	S21°W	73.9 feet
Red pine 8"	N67°W	56.2 feet
Sign post	East	0.5 feet

10. Quarter Corner to Sections 19-20.

Corner position restored at midpoint and on line between the southwest corner and the northwest corner of Section 20.

Corner references:

White spruce 8"	N26°E	40.9 feet
White spruce 5"	N70°W	25.6 feet
Sign Post	North	0.5 feet

11. Quarter Corner to Sections 20-21.

Corner position restored at midpoint and on line between the northeast corner and the southeast corner of Section 20.

Corner references:

White spruce 8"	S74°E	33.6 feet
Red maple 7"	S63°W	27.5 feet
Sign post	West	0.5 feet

COPY

Sheet 4 of 5

12. Quarter Corner to Sections 20-29.

Corner position in center of State Highway No. 139 restored from 1934 highway station ties to corner.

Corner references:

1. Reference monument	N42°26'W	70.0 feet
Aspen 10"	S37°W	11.1 feet
Red pine 13"	N43°W	7.2 feet
Sign post	West	0.5 feet
2. Reference monument	S38°01'W	80.0 feet
Oak 10"	S50°W	22.1 feet
Oak 8"	N77°W	33.0 feet
Sign post	West	0.5 feet

13. Quarter Corner to Sections 28-29.

Corner monumented by S-887 in 1976. Corner certificate filed as Document No. 109435 in Forest County records on June 11, 1976.

CORNERS ESTABLISHED

Corner position on the intersection of the straight lines between opposing quarter corners on the perimeter of Section 20 was not monumented.

1. West Sixteenth Corner to Sections 17-20.

Corner position established at midpoint and on line between the north quarter corner and the northwest corner of Section 20.

Corner references:

Red pine 11"	N28°E	51.5 feet
Red pine 10"	S32°E	20.6 feet

2. South Sixteenth Corner to Sections 20-21.

Corner position established at midpoint and on line between the east quarter corner and the southeast corner of Section 20.

Corner references:

Red pine 11"	N68°E	28.4 feet
Red pine 11"	N72°W	26.4 feet
Sign post	North	0.5 feet

3. West Sixteenth Corner to Sections 20-29.

Corner position established at midpoint and on line between the south quarter corner and the southwest corner of Section 20.

Corner references:

Red pine 10"	N25°E	26.2 feet
White spruce 10"	N73°W	22.2 feet
Sign post	North	0.5 feet

4. Center West Sixteenth Corner.

Corner position established at midpoint and on line between the center quarter corner position and the west quarter corner of Section 20.

Corner references:

Maple 7"	S66°E	25.0 feet
Red pine 4"	N31°W	27.8 feet
Sign post	Southeast	0.5 feet

COPY

Sheet 5 of 5

5. Center South Sixteenth Corner.

Corner position established at midpoint and on line between the center quarter corner position and the south quarter corner of Section 20.

Corner references:

Red oak 17"	N24°E	32.8 feet
Red oak 11"	S02°W	21.7 feet
Maple 7"	N83°W	23.2 feet
Sign post	Northwest	0.5 feet

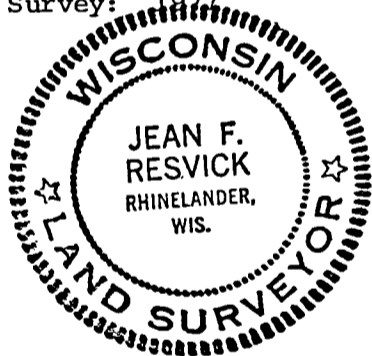
SURVEYOR'S AFFIDAVIT

State of Wisconsin)
County of Forest)^{ss}

I, Jean F. Resvick, Land Surveyor, U.S. Forest Service, and a registered land surveyor in the State of Wisconsin, hereby certify that I have surveyed and subdivided Section 20, Township 37 North, Range 15 East, Fourth Principal Meridian, Forest County, Wisconsin.

The plat map and survey notes herewith are a correct representation of the land surveyed and subdivided. I have surveyed and subdivided said section in accordance with the rules for the survey of the public lands and the statutes of the State of Wisconsin.

Date of Survey: 1977



Land Surveyor, U.S. Forest Service
R.L.S. State of Wisconsin
Certificate S-802