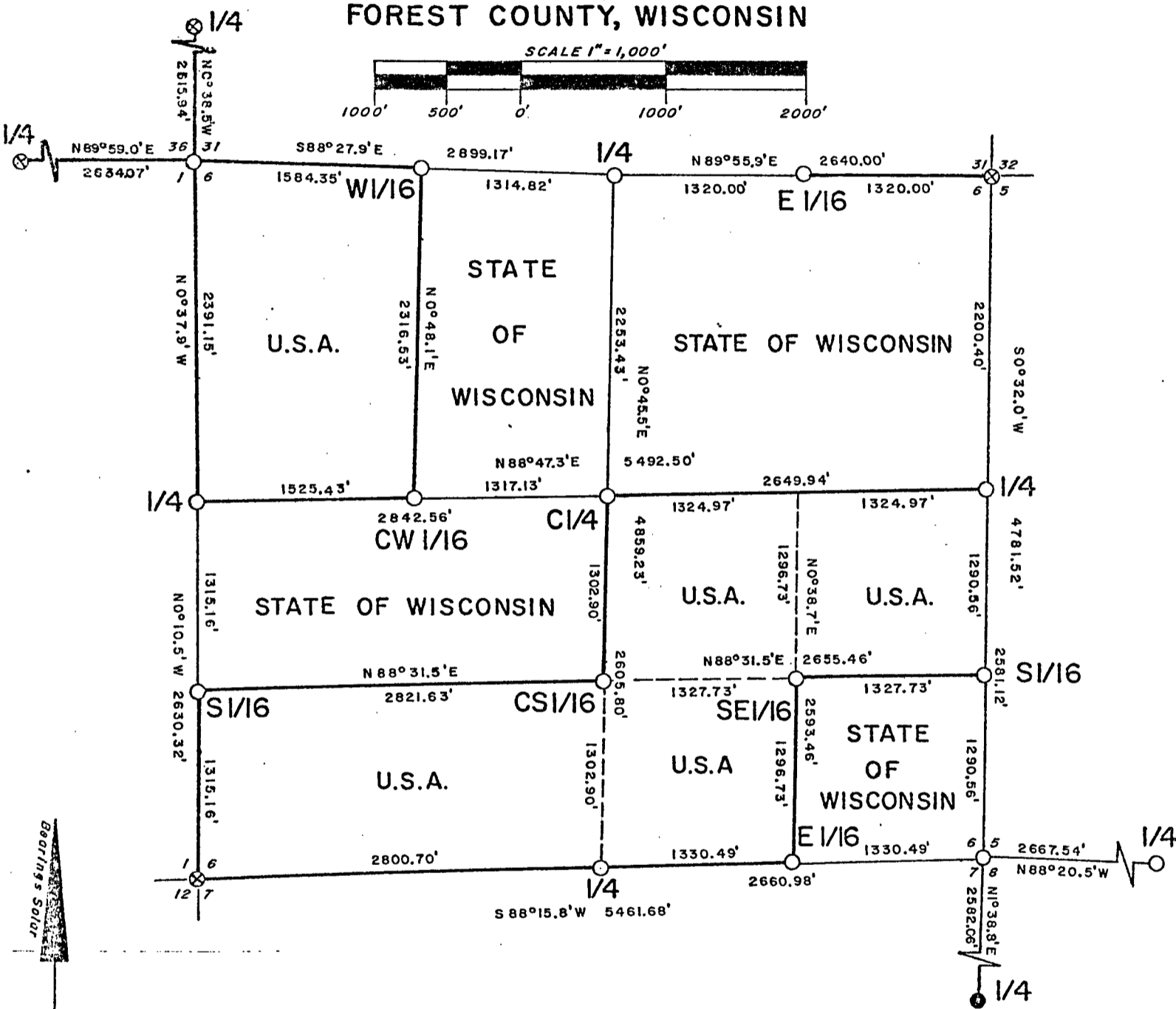


Stock No. 26273

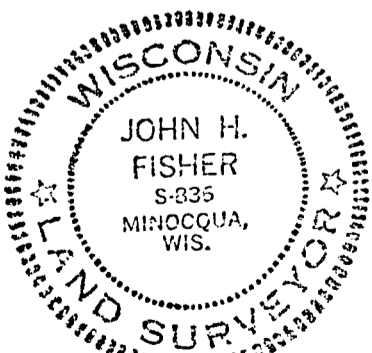
FOREST CO SURVEYOR  
FILE # 371406-19821012  
DATE \_\_\_\_\_ BY \_\_\_\_\_

### PLAT OF SURVEY U. S. GOVERNMENT LAND

Being the NW 1/4 of the NW 1/4, SW 1/4 of the NW 1/4, SW 1/4 of the SW 1/4  
SE 1/4 of the SW 1/4, SW 1/4 of the SE 1/4, NW 1/4 of the SE 1/4 and the  
NE 1/4 of the SE 1/4 of Section 6, Township 37 North, Range 14 East,  
Fourth Principal Meridian  
FOREST COUNTY, WISCONSIN



NORTH COUNTRY SURVEYORS



*John H. Fisher*  
John H. Fisher R.L.S. S-336

Dated 10/12/82

LEGEND

- ⊗ = Recovered 2" iron pipe with brass tablet stamped to identify corner.
- = Recovered 2" aluminum pipe with aluminum tablet stamped to identify corner.
- = Corner Monumented: Set 2" aluminum pipe capped with a 3" diameter tablet stamped to identify corner.
- = Line marked by blazed and painted trees and iron sign post set in line.

CONVERSION FACTOR

Feet to Meters = .304801  
Meters to Feet = 3.280833

Stock No. 26273

SURVEY NOTES

This survey was made by North Country Surveyors pursuant to United States Department of Agriculture, Forest Service Contract "No. 53-569R-2-00011, Cadastral Survey" for the purpose of recovering, restoring, establishing, marking and perpetuating the corners and boundary lines of the U. S. Government land on the perimeter and within Section 6, T37N, R14E, Fourth Principal Meridian, Forest County, Wisconsin as shown on the plat herewith.

The original Government survey of the north and west township lines were made by Alfred Millard, Deputy Surveyor in June of 1857. The original Government subdivision survey of this township was made by James McBride in August of 1859.

Bearings between corner positions are true bearings by reference to a solar observation. All distances shown thereon are in feet and hundredths of feet. The control traverse was measured by use of electronic distance measuring equipment to an accuracy of one part in 10,000 or greater. Corners recovered, restored and established by this survey are marked by the monument described in the map legend. Each monumented corner position is referenced to blazed and scribed bearing trees and described reference objects.

CORNERS RECOVERED

## 1. Quarter Corner to Sections 1-36

Corner monument is a 2" galvanized iron pipe with a brass tablet stamped to identify corner as established by Jean F. Resvick on July 20, 1970.

## Corner References

Maple	5"	S45°W	4.55 feet
Maple	16"	N34°W	15.31 feet
Steel post with sign, North 1 foot			

## 2. Quarter Corners to Section 31-36

Corner monument is a 2" galvanized iron pipe with brass tablet stamped to identify corner as established by Jean F. Resvick, October 7, 1970.

## Corner Reference

Cedar	8"	N51°E	27.30 feet
Cedar	7"	N 4°W	35.34 feet

Stock No. 26273

## 3. Corner to Sections 5-6-31-32

Corner monument is a 2" galvanized iron pipe with brass tablet stamped to identify corner as established by Jean F. Resvick in 1966

## Corner Reference

Cedar	10"	S 9°W	32.45 feet
Cedar	9"	S31°E	20.85 feet
Cedar	8"	N27°E	16.95 feet
Tamarack	6"	N35°W	33.40 feet
Steel post with sign, West, 1.6 feet			

## 4. Quarter Corner to Sections 5-8

Corner monument is a 2" aluminum pipe 5' long with aluminum tablet stamped to identify corner, replacing scribed wood post set by others.

## Corner Reference

Black Spruce	6"	S38°W	4.13 feet
Black Spruce	4"	S88°E	4.64 feet
Black Spruce	6"	N29°W	17.57 feet
Steel post with sign, East, .80 feet			

## 5. Quarter Corner to Sections 7-8

Corner monument is a Forest County 2" aluminum pipe capped with a 3" diameter aluminum tablet stamped to identify corner. Set by Philip T. Hanson in 1975.

## Corner Reference

Cedar	7"	N84°W	25.1 feet
Cedar	10"	S38°E	19.9 feet
Hemlock	12"	S36°W	10.1 feet

## 6. Corner To Sections 1-6-7-12

Corner monument is a 2" galvanized iron pipe 5' long, filled with concrete, with a brass tablet stamped to identify corner. Set by Jean F. Resvick in October, 1964.

## Corner Reference

Cedar	8"	N35°E	16.39 feet
Black Ash	9"	S41°E	25.81 feet
Cedar	7"	S44°W	42.00 feet
Cedar	7"	N51°W	19.14 feet

Stock No. 26273

## 7. Quarter Corner to Sections 1-6

Corner monument is a 2" aluminum pipe 5' long with aluminum tablet stamped to identify corner, replacing tip of old post found in swamp from original bearing trees, Tamarack 8" (lying down, scribed) N45°W, 34 links and a Spruce stump (rotten) S69°E, 23 links.

## Corner Reference

Cedar	10"	S64°W	18.32 feet
Cedar	6"	N22°W	20.09 feet
Cedar	7"	N26°E	18.70 feet
Steel post with sign, East, 0.8 feet.			

CORNERS ESTABLISHED

## 1. Corner to Sections 1-6-31-36

Corner monument is a 2" aluminum pipe 3' long with aluminum tablet stamped to identify corner.

## Corner Reference

Nail in Hemlock	10"	S31°E	50.54 feet
Nail in Red Maple	10"	N85°W	27.12 feet
Nail in Sugar Maple	7"	N23°E	18.71 feet
Nail in White Spruce	12"	S84°E	20.38 feet
Steel post with sign, East, 1.0 feet			

## 2. Quarter Corner to Sections 6-31

Corner monument is a 2" aluminum pipe 5' long with aluminum tablet stamped to identify corner. Corner was set by original distances from northeast Section Corner using original Tamarack line tree 12.07 chains West of Section Corner for line.

## Corner Reference

Nail in Cedar	9"	S 7°W	13.80 feet
Nail in Cedar	7"	N53°W	2.33 feet
Nail in Cedar	9"	S76°E	30.05 feet
Steel post with sign, N18°E, 1.3 feet			

## 3. Quarter Corner to Sections 5-6

Corner monument is a 2" aluminum pipe 3' long with aluminum tablet to identify corner. Corner set by single proportionate measure between Section Corner 5-6-31-32, and Section Corner 5-6-7-8 according to original Government distances.

Stock No. 26273

## Corner References

Nail in Sugar Maple 7"	N 2°W	2.00 feet
Nail in Sugar Maple 10"	S52°W	6.17 feet
Nail in Sugar Maple 8"	S36°E	12.67 feet
Steel Post with Sign, West,	2.0 Feet	

## 4. Corner to Sections 5-6-7-8

Corner monument is a 2" aluminum pipe 5' long with aluminum tablet stamped to identify corner. Corner set by double proportionate measure between Section Corner 5-6-31-32, Section Corner 1-6-7-12, Quarter Corner between Sections 5-8 and Quarter Corner between Section 7-8, according to original Government distances.

## Corner References

Nail in Cedar 9"	S68°E	25.00 feet
Nail in Cedar 8"	N55°E	9.21 feet
Nail in Cedar 8"	N 3°E	11.83 feet
Steel post with sign, East,	1.00 feet.	

## 5. Quarter Corner to Sections 6-7

Corner monument is a 2" aluminum pipe 3' long with aluminum tablet stamped to identify corner. Corner set by single proportionate measure between Section Corner 1-6-7-12 and Section Corner 5-6-7-8, according to original Government distances.

## Corner References

Nail in Sugar Maple 6"	S53°E	15.37 feet
Nail in Sugar Maple 13"	S15°W	17.34 feet
Nail in Sugar Maple 14"	N56°W	29.79 feet
Steel post with sign, East,	1.00 feet	

## 6. Center Quarter Corner of Section 6

Corner monument is a 2" aluminum pipe 5' long with aluminum tablet stamped to identify corner. Corner set at intersection of quarter lines.

## Corner References

Nail in Black Spruce 4"	N13°W	20.70 feet
Nail in Tamarack 3"	S19°E	47.28 feet
Nail in Black Spruce 4"	S 3°W	93.11 feet
Steel post with sign, East,	1.40 feet	

Stock No. 26273

## 7. West Sixteenth Section 6-31

Corner monument is a 2" aluminum 3' long with aluminum tablet stamped W-1/16 to identify corner. Monument is set on line and single proportionate measure between Section Corner 1-6-31-36 and quarter corner Section 6-31, according to original Government distances.

## Corner References

Nail in Hemlock	12"	N88°E	4.75 feet
Nail in White Spruce	10"	S64°W	11.51 feet
Nail in Red Maple	12"	N10°W	28.26 feet
Steel post with sign, South,	0.60 feet.		

## 8. East Sixteenth Sections 6-31

Corner monument is a 2" aluminum pipe 5' long with aluminum tablet stamped E-1/16 to identify corner. Monument is set on line and at the mid point between the Section Corner 5-6-31-32 and quarter corner Section-6-31.

## Corner References

Nail in Cedar	7"	S58°E	19.10 feet
Nail in Cedar	10"	N50°W	3.40 feet
Nail in Cedar	10"	N44°E	9.00 feet
Steel post with sign, East,	1.60 feet		

## 9. Center West Sixteenth

Corner monument is a 2" aluminum pipe 5' long with aluminum tablet stamped CW-1/16 to identify corner. Monument is set on line and single proportionate measure between the Quarter Corner Sections 1-6 and Center Quarter of Section 6.

## Corner References

Nail in Cedar	10"	S41°E	39.35 feet
Nail in Tamarack	10"	S54°W	41.33 feet
Nail in Cedar	7"	N81°W	28.85 feet
Steel post with sign, West,	1.20 feet		

## 10. South Sixteenth Sections 1-6

Corner monument is a 2" aluminum pipe, 3' long with aluminum tablet stamped S-1/16 to identify corner. Monument is set on line and at the mid point between Section Corner 1-6-7-12 and Quarter Sections 1-6.

Stock No. 26273

## Corner References

Nail in Hemlock	13"	S 1°W	19.10 feet
Nail in Cedar	6"	S75°E	12.87 feet
Nail in Hemlock	8"	N45°W	33.03 feet
Steel post with sign, East, 1.70 feet			

## 11. Center South Sixteenth

Corner monument is a 2" aluminum pipe, 3' long with aluminum tablet stamped CS-1/16 to identify corner. Monument is on line and at mid point between quarter corner Section 6-7 and Center Quarter of Section 6.

## Corner References

Nail in Sugar Maple	6"	N40°W	44.18 feet
Nail in Basswood	17"	N58°E	16.70 feet
Nail in Cedar	8"	S46°W	15.07 feet
Steel post with sign, North, 9.00 feet			

## 12. Southeast Sixteenth

Corner monument is a 2" aluminum pipe, 3' long with aluminum tablet stamped SE-1/16 to identify corner. Monument is set at the intersection of the sixteenth line in the Southeast Quarter of Section 6.

## Corner References

Nail in Sugar Maple	9"	N44°E	3.77 feet
Nail in Sugar Maple	7"	S60°E	13.34 feet
Nail in Sugar Maple	5"	S52°W	12.94 feet
Steel post with sign, South, 1.10 feet			

## 13. South Sixteenth Sections 5-6

Corner monument is a 2" aluminum pipe 5' long with aluminum tablet stamped S-1/6 to identify corner. Monument is on line and at mid point between Sections Corner 5-6-7-8 and Quarter Corner Sections 5-6.

## Corner References

Nail in Cedar	7"	N36°E	21.13 feet
Nail in Cedar	5"	S27°E	29.67 feet
Nail in Cedar	6"	West	37.70 feet
Steel post with sign, West, 1.00 feet.			

Stock No. 26273

## 14. East Sixteenth Sections 6-7

Corner monument is a 2" aluminum pipe, 3' long with aluminum tablet stamped E-1/16 to identify corner. Monument is on line and at mid point between Section Corner 5-6-7-8 and Quarter Corner Sections 6-7.

## Corner References

Nail in Hemlock	11"	N 3°W	38.98 feet
Nail in Cedar	7"	N70°W	7.06 feet
Nail in Cedar	6"	S48°E	12.09 feet
Steel post with sign, North,			1.10 feet

SURVEYOR'S AFFIDAVIT

State of Wisconsin)  
County of Forest )SS

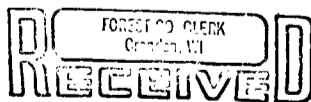
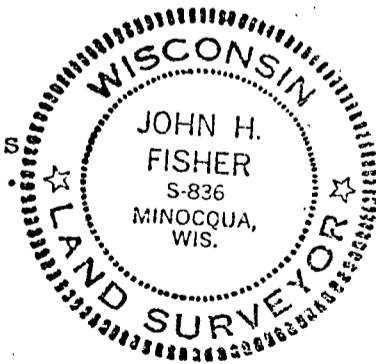
I, John H. Fisher, Land Surveyor, registered in the State of Wisconsin, hereby certify that I have surveyed and subdivided Section 6, T37N, R14E, Fourth Principal Meridian, County of Forest, State of Wisconsin, in accordance with the rules for the survey of the public lands and with the statutes of the State of Wisconsin. The plat map and survey notes are an accurate representation of the corners recovered and established.

*John H. Fisher 10/12/82*  
Registered Land Surveyor, State of  
Wisconsin

Certificate No. S-836

Date of Survey: March - October 1982

NOTE: "The field survey notes and a copy of the plat of survey are on file in the Forest Supervisor's Office in Rhinelander, Wisconsin".



February 22, 1983  
Dora C. James  
County Clerk