

Stock No. 26273

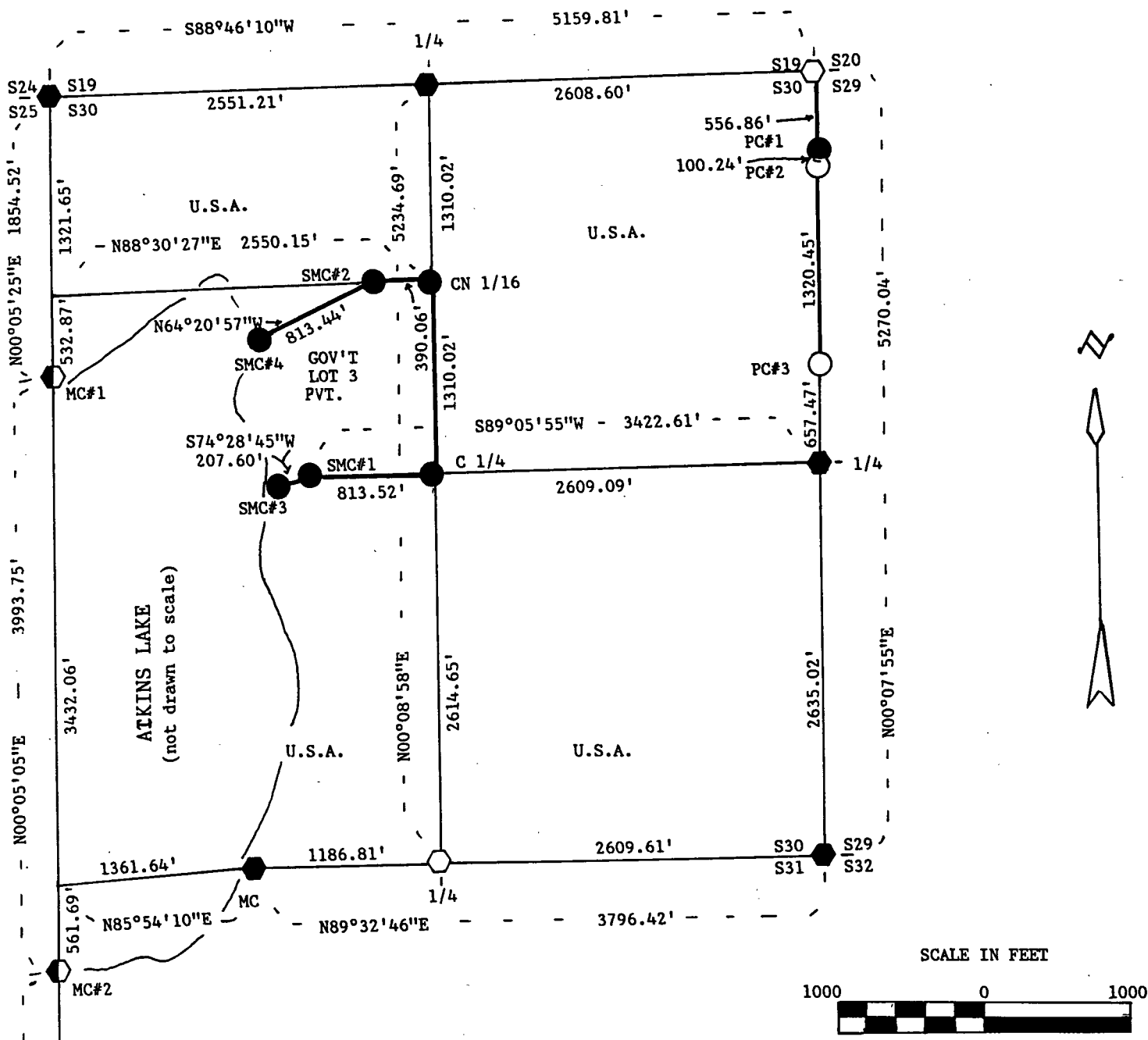
FOREST CO SURVEYOR

FILE # 371230-19871111

DATE _____ BY _____

PLAT OF SURVEY FOR CERTIFIED LAND CORNER RESTORATION AND ESTABLISHMENT OF U.S. GOVERNMENT LAND

BEING THE CORNERS FOR THE NE 1/4, SE 1/4, GOV'T LOT 1, GOV'T LOT 2, GOV'T LOT 4 AND GOV'T LOT 5.
SECTION 30, T37N, R12E, FOURTH PRINCIPAL MERIDIAN
FOREST COUNTY, STATE OF WISCONSIN



- Boundary line marked to standard.
- 1" diameter aluminum pipe monument, 36 inches long with an aluminum cap stamped to identify the corner.
- 1" diameter aluminum pipe monument, 60 inches long with an aluminum cap stamped to identify the corner.
- ◻ 2 1/2" diameter aluminum pipe monument, 36 inches long with an aluminum cap stamped to identify the corner.
- ◼ 2 1/2" diameter aluminum pipe monument, 60 inches long with an aluminum cap stamped to identify the corner.
- ◻ Oneida County monument with 2" brass cap on iron pipe.
- ◼ 2" X 120" Berntsen aluminum monument.

NOTE: Bearings are referenced to polaris observations.

R11E
R12E
S36
S31
1/4

Stock No. 26273

Sheet 2 of 5

SURVEY NOTES

This survey was made by John C. Schulke, a Registered Land Surveyor in the State of Wisconsin, for the U.S. Department of Agriculture, Forest Service. The purpose of the survey was for recovery, establishing marking and perpetuating the corners and boundary lines of the U.S. Government Land on the perimeter and within Section 30, Township 37 North, Range 12 East, Fourth Principal Meridian, Forest County, Wisconsin.

The original Government survey of the township boundary was done by Alfred Millard, a U.S. Deputy Surveyor, in May and June of 1858. The original Government subdivision survey of this township was done by William E. Daugherty in 1859.

The bearings between corner positions are true bearings as determined by reference to polaris observations. The accuracy of this survey exceeds the State requirement for closure of 1 in 3,000. Corners recovered or established by this survey are marked as described in the map legend. Each monumented corner is referenced to blazed, scribed, painted and tagged bearing trees. Tie bearings are magnetic, and not corrected for declination.

CORNERS RECOVERED AND RESTORED

1. Meander Corner Number 1 Between Sections 25 and 30.
Corner monument recovered in place and as described on U.S. Public Land Survey Monument Record form in the Forest County Records, Document #128368, in 1985 by Milo E. Stefan (S-1558).
2. Section Corner Common to Sections 19, 24, 25 and 30.
Corner monument recovered in place and as described on Certified Land Corner Restoration form in the Forest County Records, Document #94221, in 1968 by Jean E. Resvick (S-802).
3. Quarter Corner Between Sections 19 and 30.
Corner position restored by proportionate measurement.

Corner references:

Spruce	4"	N18°E	4.45 feet
Tamarack	3"	N27°W	39.42 feet
Tamarack	4"	S88°W	34.28 feet
Tamarack	3"	S27°E	68.95 feet
Steel sign post		Northeast	1.5 feet

4. Section Corner Common to Sections 19, 20, 29 and 30.
Recovered evidence of GLO bearings trees. Found charred fragments of wood post down about 1 1/2 feet in the ground. GLO swamp calls to the South 297 feet and North 1,221 feet fit the corner position. Found 3/4" diameter iron pipe S31°E a distance of 38.72 feet.

Corner references recovered:

Birch stump hole		N82°W	3.3 feet
Birch stump hole		S72°E	4.6 feet

Corner references:

Red Maple	5"	N46°W	24.58 feet
Red Maple	8"	N35°E	26.16 feet
Red Maple	6"	S54°E	16.64 feet
Red Maple	8"	S31°W	16.96 feet
Steel sign post		Northwest	1.0 feet

Stock No. 26273

Sheet 3 of 5

5. Quarter Corner Between Sections 29 and 30.

Corner position is restored by proportionate measurement. Note: trees are dead or dying from beaver impoundment.

Corner references:

Tamarack	10"	N34°E	22.06 feet
Tamarack	10"	S65°E	27.32 feet
Tamarack	14"	S54°W	26.60 feet
Tamarack	17"	N76°W	17.11 feet
Steel sign post		West	2.1 feet

6. Section Corner Common to Sections 29, 30, 31 and 32.

Recovered both stumps of the GLO bearing trees.

Corner references recovered:

Tamarack stump		N67°E	7.9 feet
Cedar stump		S26°W	8.6 feet

Corner references:

Tamarack	5"	N50°E	27.37 feet
Tamarack	5"	S44°E	13.27 feet
Tamarack	6"	S77°W	5.00 feet
Tamarack	7"	N62°W	36.98 feet
Steel sign post		West	1.1 feet

7. Quarter Corner Between Sections 30 and 31.

Corner position restored by proportionate measurement.

Corner references:

Red pine	22"	S05°E	38.61 feet
Hemlock	12"	S34°W	50.88 feet
Red Maple	4"	N87°E	39.00 feet
Cedar	12"	N31°E	74.24 feet
Steel sign post		East	1.0 feet

8. Meander Corner Corner Between Sections 30 and 31.

Recovered a GLO bearing tree laying on it s side and badly decayed.

Corner references recovered:

Tamarack		N88°E	77.9 feet
----------	--	-------	-----------

Corner references:

Maple	4"	S72°E	145.00 feet
Maple clump	9"	N78°E	154.56 feet
Maple	11"	N54°E	201.72 feet
White Birch	11"	N43°E	236.98 feet
Steel sign post		South	1.1 feet

9. Quarter Corner Between Sections 31 and 36.

Corner monument recovered in place and as described on U.S. Public Land Survey Monument Record form in the Forest County records, Document #128370, in 1985 by Milo E. Stefan (S-1558).

10. Meander Corner Number 2 Between Sections 31 and 36.

Corner monument recovered in place and as described on the U.S. Public Land Survey Monument Record form in the Forest County records, Document #128369, in 1985 by Milo E. Stefan (S-1558).

Stock No. 26273

Sheet 4 of 5

CORNERS ESTABLISHED

1. Special Meander Corner Number 1 of Section 30.
Corner position is established at the intersection of the computed meander line and the East-West Quarter line of Section 30. The edge of the Bog is Due West a distance of 140 feet.

Corner references:

Tamarack	9"	S56°E	20.00 feet
Tamarack	6"	N84°W	16.35 feet
Tamarack	13"	N20°W	28.99 feet
Steel sign post		West	1.1 feet

2. Center Quarter Corner of Section 30.
Corner position is established at the intersection of the North-South Quarter line with the East-West Quarter line. The bearing of the East-West Quarter line was determined by the mean bearing of the North and South Section lines.

Corner references:

Spruce	5"	N22°W	19.10 feet
Spruce	4"	N68°E	22.60 feet
Spruce	5"	S14°E	18.88 feet
Steel sign post		East	1.0 feet

3. Center North Sixteenth Corner of Section 30.
Corner position is established at the midpoint and on line between the North Quarter corner and the Center Quarter corner of Section 30.

Corner references:

Cedar	6"	N09°E	35.72 feet
White Pine	14"	S51°E	15.16 feet
Tamarack	7"	S51°W	9.62 feet
Steel sign post		East	1.0 feet

4. Special Meander Corner Number 2 of Section 30.
Corner position is established at the intersection of the computed original meander line and the East-West Quarter line.

Corner references:

Hemlock	12"	S66°E	37.13 feet
Cedar	11"	N17°E	60.58 feet
Spruce	11"	N56°W	31.94 feet
Steel sign post		Northeast	0.7 feet

5. Special Meander Corner Number 3 of Section 30.
Corner position is established on a line from Special Meander Corner #1 which is the shortest distance to the lake shore.

Corner references:

Tamarack	16"	N73°E	133.33 feet
Balsam	13"	S65°E	97.90 feet
Maple	13"	S19°E	83.31 feet
Steel sign post		Southwest	2.0 feet

6. Special Meander Corner Number 4 of Section 30.
Corner position is established on a line from Special Meander Corner #2 which is the shortest distance to the lake shore.

Corner references:

Birch	8"	S09°E	51.18 feet
Maple	20"	S46°E	70.70 feet
Maple	7"	S69°E	70.98 feet
Steel sign post		Southwest	0.9 feet

Stock No. 26273

Sheet 5 of 5

7. Property Corner Number 1 Between Sections 29 and 30.

Corner position is established at the intersection of the East line of Section 30 with the North right-of-way line of the Soo Railroad.

Corner references:

Cedar	6"	N80°W	54.47 feet
Cedar	7"	N17°W	66.17 feet
Cedar	7"	N15°E	19.38 feet
Steel sign post		North	1.3 feet

8. Property Corner Number 2 Between Sections 29 and 30.

Corner position is established at the intersection of the East line of Section 30 with the South right-of-way line of the Soo Railroad.

Corner references:

White Spruce	6"	N38°E	13.67 feet
White Birch	8"	S26°W	16.50 feet
White Birch	5"	S75°E	1.94 feet
Steel sign post		South	0.8 feet

9. Property Corner Number 3 Between Sections 29 and 30.

Corner position is established at the Southwest corner of the Northwest 10.00 acres of the Southwest Quarter of the North-west Quarter of Section 29.

Corner references:

Aspen	8"	N88°E	117.90 feet
Sugar Maple	3"	N54°E	83.03 feet
Red Maple	6"	N89°W	38.37 feet
Steel sign post		West-SW	1.0 feet

SURVEYOR'S AFFIDAVIT

State of Wisconsin)
County of Forest)^{ss}

I, John C. Schulke, a Cadastral Surveyor, and a Registered Land Surveyor in the State of Wisconsin, hereby certify that I have surveyed and subdivided Section 30, Township 37 North, Range 12 East, Fourth Principal Meridian, State of Wisconsin.

The plat map and survey notes herewith are a correct representation of the land surveyed and subdivided. I have surveyed and subdivided said section in accordance with the rules for the survey of the public lands and with the statutes of the State of Wisconsin.



John C. Schulke
4604 So. U.S.-31
Ludington, MI 49431
R.L.S. State of Wisconsin
Date of Survey 1987
Certificate S-1665

John C. Schulke
Nov 11, 1987

Survey requested by:

Doris Stacey
District Ranger

2/1/88
Date

