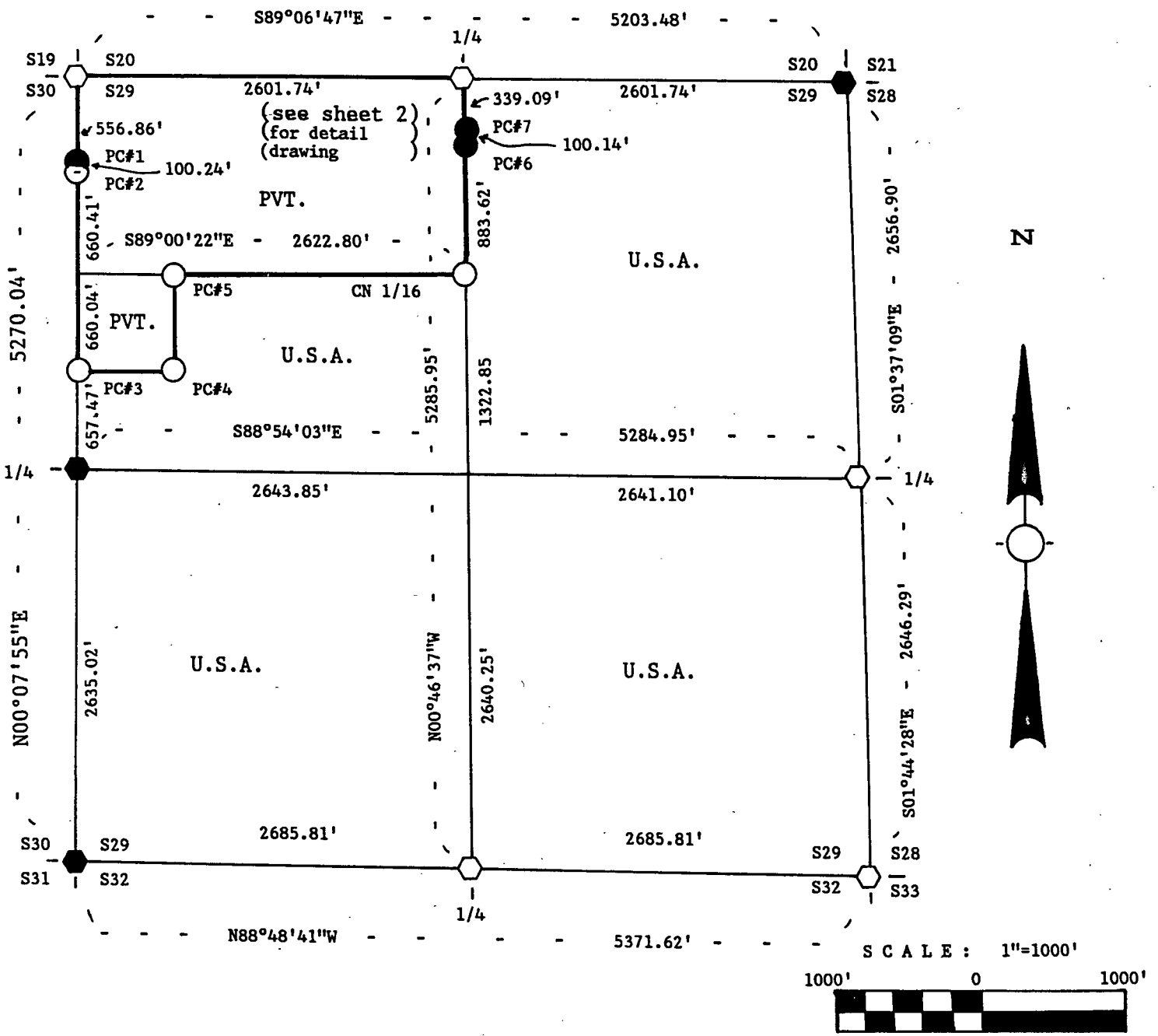


Stock No. 26273

FOREST CO SURVEYOR  
 FILE # 371229-19870413  
 DATE \_\_\_\_\_ BY \_\_\_\_\_

**PLAT OF SURVEY FOR CERTIFIED LAND CORNER RESTORATION AND ESTABLISHMENT OF U.S. GOVERNMENT LAND**

BEING THE CORNERS FOR THE NE 1/4, THE SE 1/4, THE SW 1/4, THE SE 1/4 OF THE NW 1/4 AND THE SW 1/4 OF THE NW 1/4 EXCEPT THE NW TEN ACRES.  
 SECTION 29, T37N, R12E FOURTH PRINCIPAL MERIDIAN  
 FOREST COUNTY, STATE OF WISCONSIN



**LEGEND**

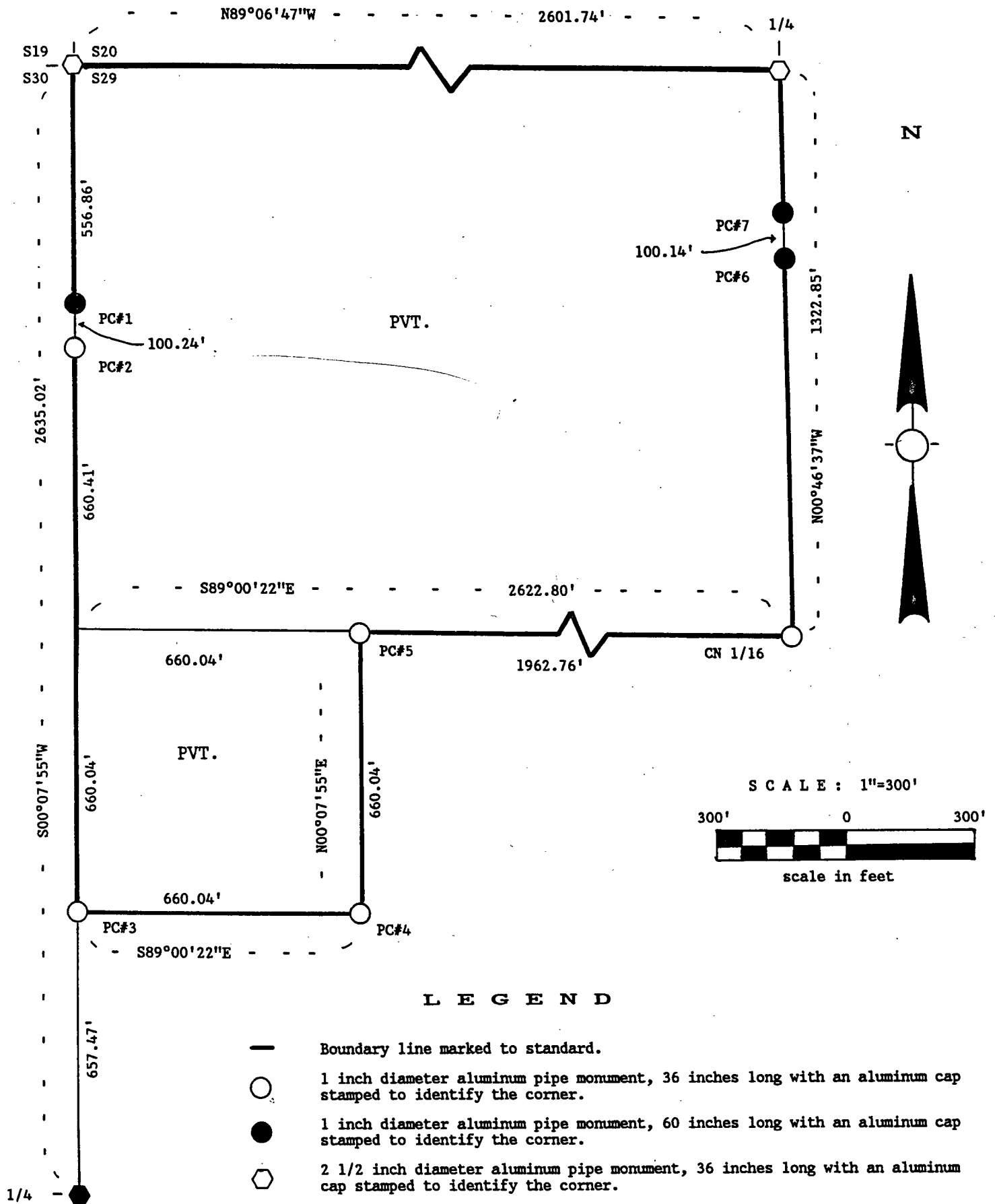
- Boundary line marked to standard.
- 1 inch diameter aluminum pipe monument, 36 inches long with an aluminum cap stamped to identify the corner.
- 1 inch diameter aluminum pipe monument, 60 inches long with an aluminum cap stamped to identify the corner.
- ⬡ 2 1/2 inch diameter aluminum pipe monument, 36 inches long with an aluminum cap stamped to identify the corner.
- ⬢ 2 1/2 inch diameter aluminum pipe monument, 60 inches long with an aluminum cap stamped to identify the corner.

NOTES: Bearings are reference to polaris observation.

Stock No. 26273

Sheet 2 of 6

**PLAT OF SURVEY FOR CERTIFIED  
LAND CORNER RESTORATION AND ESTABLISHMENT**  
BEING THE CORNERS FOR THE N 1/2 OF THE NW 1/4 AND THE NW TEN ACRES OF THE SW 1/4 OF THE NW 1/4.  
SECTION 29, T37N, R12E, FOURTH PRINCIPAL MERIDIAN  
FOREST COUNTY, STATE OF WISCONSIN



**L E G E N D**

- Boundary line marked to standard.
- 1 inch diameter aluminum pipe monument, 36 inches long with an aluminum cap stamped to identify the corner.
- 1 inch diameter aluminum pipe monument, 60 inches long with an aluminum cap stamped to identify the corner.
- ⬡ 2 1/2 inch diameter aluminum pipe monument, 36 inches long with an aluminum cap stamped to identify the corner.
- ⬢ 2 1/2 inch diameter aluminum pipe monument, 60 inches long with an aluminum cap stamped to identify the corner.

NOTE: Bearings are reference to polaris observation.

Stock No. 26273

Sheet 3 of 6

## SURVEY NOTES

This survey was made by John C. Schulke, a Registered Land Surveyor in the State of Wisconsin, for the U.S. Department of Agriculture, Forest Service. The purpose of the survey was for recovery, establishing, marking and perpetuating the corners and boundary lines of the U.S. Government Land on the perimeter and within Section 29, Township 37 North, Range 12 East, Fourth Principal Meridian, Forest County Wisconsin.

The original Government subdivision survey of this township was done by William E. Daugherty in 1859.

The bearings between corner positions are true bearings as determined by reference to polaris observations. The accuracy of this survey exceeds the State requirement for closure of 1 in 3,000. Corners recovered or established by this survey are marked as described in the map legend. Each monumented corner is referenced to blazed, scribed, painted and tagged bearing trees. Tie bearings are magnetic, and not corrected for declination.

CORNERS RECOVERED AND RESTORED1. Section Corner Common to Sections 19, 20, 29 and 30.

Recovered evidence of GLO bearing trees. Found charred fragments of wood post down about 1 1/2 feet in the ground. Swamp calls to the South 297 feet and North 1,221 feet. Both these swamp calls both fit the GLO notes. Found 3/4" diameter iron pipe S31°E 38.72 feet.

## Corner references recovered:

Birch stump hole		N82°W	3.3	feet
Birch stump hole		S72°E	4.6	feet

## Corner references:

Red Maple	5"	N46°W	24.58	feet
Red Maple	8"	N35°E	26.16	feet
Red Maple	6"	S54°E	16.64	feet
Red Maple	8"	S31°W	16.96	feet
Steel sign post		Northwest	1.0	feet

2. Quarter Corner Between Sections 20 and 29.

Restored by proportionate measurement.

## Corner references:

Sugar Maple	4"	N62°W	38.22	feet
Sugar Maple	10"	N38°E	8.80	feet
Sugar Maple	10"	S30°E	18.40	feet
Sugar Maple	5"	S56°W	11.06	feet
Steel sign post		Northwest	0.8	feet

3. Section Corner Common to Sections 20, 21, 28 and 29.

Recovered evidence of GLO bearing trees. The location of these trees places the corner in the same location as the railroad surveys.

## Corner references recovered:

Decayed Cedar stump		N40°E	33.0	feet
Decayed Cedar stump		S64°W	11.9	feet

## Corner references:

Black Ash	8"	N51°E	17.83	feet
Cedar	8"	S71°E	23.83	feet
Black Ash	10"	S15°W	29.05	feet
Cedar	5"	N43°W	23.86	feet
Steel sign post		Northeast	0.8	feet

## Stock No. 26273

Sheet 4 of 6.

4. Quarter Corner Between Sections 28 and 29.

Found post hole and two hemlock stumps which fits the GLO notes.

## Corner references recovered:

Hemlock stump		N69°E	5.9	feet
Hemlock stump		N63°W	2.6	feet

## Corner references:

Sugar Maple	4"	S43°W	29.63	feet
Sugar Maple	8"	N18°W	31.52	feet
Sugar Maple	8"	N40°E	30.23	feet
Sugar Maple	5"	S77°E	41.25	feet
Steel sign post		South-SW	1.0	feet

5. Section Corner Common to Sections 28, 29, 32 and 33.

Restored by proportionate measurement. Center of the Forest Service road is N30°W 75 feet.

## Corner references:

"X" on boulder	8'X6'X5' high	N31°W	31.30	feet
Iron wood	4"	S25°W	76.22	feet
White Spruce	5"	N25°E	63.90	feet
Twin Red Maple	6"	N18°W	101.35	feet
Steel sign post		Southeast	1.2	feet

6. Quarter Corner Between Sections 29 and 32.

Restored by proportionate measurement. Center of a two track is N57°W 104.2 feet from the monument.

## Corner references:

White Pine	10"	N44°W	47.23	feet
Sugar Maple	10"	N05°E	33.24	feet
Sugar Maple	7"	S35°W	53.55	feet
Sugar Maple	10"	S72°E	23.94	feet
Steel sign post		South-SW	1.1	feet

7. Section Corner Common to Sections 29, 30, 31 and 32.

Recovered both stumps of GLO bearing trees.

## Corner references recovered:

Tamarack stump		N67°E	7.9	feet
Cedar stump		S26°W	8.6	feet

## Corner References:

Tamarack	5"	N50°E	27.37	feet
Tamarack	5"	S44°E	13.27	feet
Tamarack	6"	S77°W	5.00	feet
Tamarack	7"	N62°W	36.98	feet
Steel sign post		West	1.1	feet

8. Quarter Corner Between Sections 29 and 30.

Restored by proportionate measurement. Note: trees are dead or dying from beaver impoundment.

## Corner references:

Tamarack	10"	N34°E	22.06	feet
Tamarack	10"	S65°E	27.32	feet
Tamarack	14"	S54°W	26.60	feet
Tamarack	17"	N76°W	17.11	feet
Steel sign post		West	2.1	feet

CORNERS ESTABLISHED

Stock No. 26273

Sheet 5 of 6

1. Property Corner Number 1 Between Sections 29 and 30.

Corner position is established at the intersection of the West line of Section 29 with the North right-of-way line of the Soo Railroad.

## Corner references:

Cedar	6"	N80°W	54.47 feet
Cedar	7"	N17°W	66.17 feet
Cedar	7"	N15°E	19.38 feet
Steel sign post		North	1.3 feet

2. Property Corner Number 2 Between Sections 29 and 30.

Corner position is established at the intersection of the West line of Section 29 with the South right-of-way line of the Soo Railroad.

## Corner references:

White Spruce	6"	N38°E	13.67 feet
White Birch	8"	S26°W	16.50 feet
White Birch	5"	S75°E	1.94 feet
Steel sign post		South	0.8 feet

3. Property Corner Number 3 Between Sections 29 and 30.

Corner position is established at the Southwest corner of the Northwest 10.00 acres of the Southwest Quarter of the Northwest Quarter of Section 29.

## Corner references:

Aspen	8"	N88°E	117.90 feet
Sugar Maple	3"	N54°E	83.03 feet
Red Maple	6"	N89°W	38.37 feet
Steel sign post		West-SW	1.0 feet

4. Property Corner Number 4 of Section 29.

Corner position is established at the Southeast corner of the Northwest 10.00 acres of the Southwest Quarter of the Northwest Quarter of Section 29.

## Corner references:

Red Maple	8"	N63°E	54.70 feet
Black Ash	13"	N01°W	62.46 feet
Cedar	6"	S21°W	42.69 feet
Steel sign post		South	1.6 feet

5. Property Corner Number 5 of Section 29.

Corner position is established at the Northeast corner of the Northwest 10.00 acres of the Southwest Quarter of the Northwest Quarter of Section 29. Center of the two-track road running Southwest and Northeast is Northwest 8.5 feet from the monument.

## Corner references:

Red Maple	6"	S75°E	39.98 feet
Cedar	14"	S12°W	32.45 feet
White Birch	5"	N78°W	46.44 feet
Steel sign post		Southwest	3.1 feet

6. Property Corner Number 6 of Section 29.

Corner position is established at the intersection of the North-South Quarter line of Section 29 with the South right-of-way line of the Soo Railroad for the Northeast Quarter of said Section.

## Corner references:

Spruce	6"	N40°W	11.85 feet
Cedar	7"	S57°E	27.46 feet
Black Ash	8"	S03°W	53.68 feet
Steel sign post		Southeast	1.5 feet

Stock No. 26273

Sheet 6 of 6

7. Property Corner Number 7 of Section 29.

Corner position is established at the intersection of the North-South Quarter line or the North right-of-way line of the Soo Railroad for the Northeast Quarter of said Section.

## Corner references:

Tamarack	6"	S52°W	6.87 feet
Hemlock	10"	N16°E	42.09 feet
Cedar	6"	N79°E	42.34 feet
Steel sign post		Due West	1.0 feet

8. Center North Sixteenth Corner of Section 29.

Corner position is established at the midpoint and on line between the North Quarter corner and the Center Quarter corner of Section 29.

## Corner references:

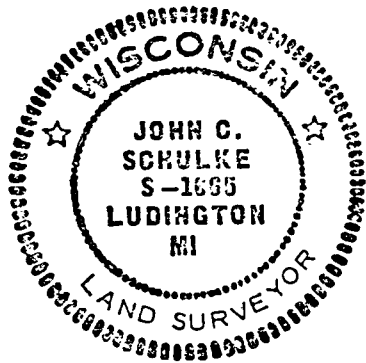
Cedar	6"	N64°E	13.61 feet
Hemlock	10"	S38°E	20.80 feet
Cedar	7"	S62°W	22.48 feet
Steel sign post		South	1.5 feet

## SURVEYOR'S AFFIDAVIT

State of Wisconsin)  
County of Forest )<sup>ss</sup>

I, John C. Schulke, a Cadastral Surveyor, and a Registered Land Surveyor in the State of Wisconsin, hereby certify that I have surveyed and subdivided Section 29, Township 37 North, Range 12 East, Fourth Principal Meridian, State of Wisconsin.

The plat map and survey notes herewith are a correct representation of the land surveyed and subdivided. I have surveyed and subdivided said section in accordance with the rules for the survey of the public lands and with the statutes of the State of Wisconsin.



John C. Schulke  
4604 South U.S-31  
Ludington, MI 49431  
R.L.S. State of Wisconsin  
Date of Survey 1987  
Certificate S-1665

*John C. Schulke*  
April 13, 1987

Survey requested by: *Dale B. Stange*  
District Ranger

*2/1/88*  
Date

