

Stock No. 26273

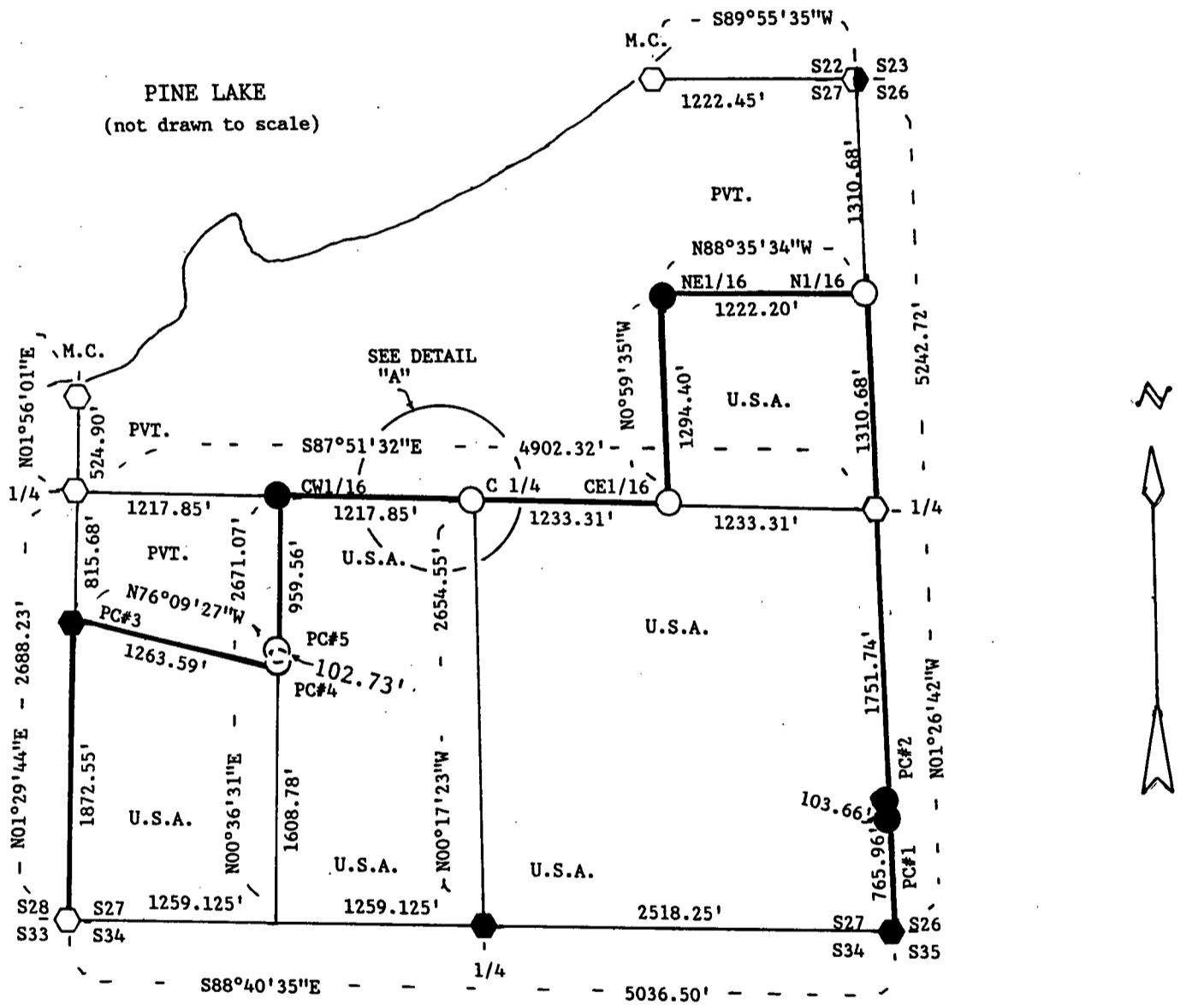
FOREST CO SURVEYOR

FILE # 371227-19871111

DATE _____ BY _____

PLAT OF SURVEY FOR CERTIFIED LAND CORNER RESTORATION AND ESTABLISHMENT OF U.S. GOVERNMENT LAND

BEING THE CORNERS FOR THE SE 1/4 OF THE NE 1/4, THE SE 1/4, THE EAST 1/2 OF THE SW 1/4 AND THE PART OF THE WEST 1/2 OF THE SW 1/4, SOUTH OF THE SOO RAILROAD RIGHT-OF-WAY.
SECTION 27, T37N, R12E, FOURTH PRINCIPAL MERIDIAN
FOREST COUNTY, STATE OF WISCONSIN



SCALE IN FEET



1 inch=1000 feet

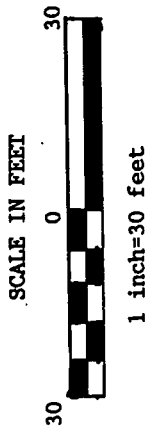
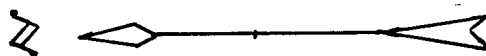
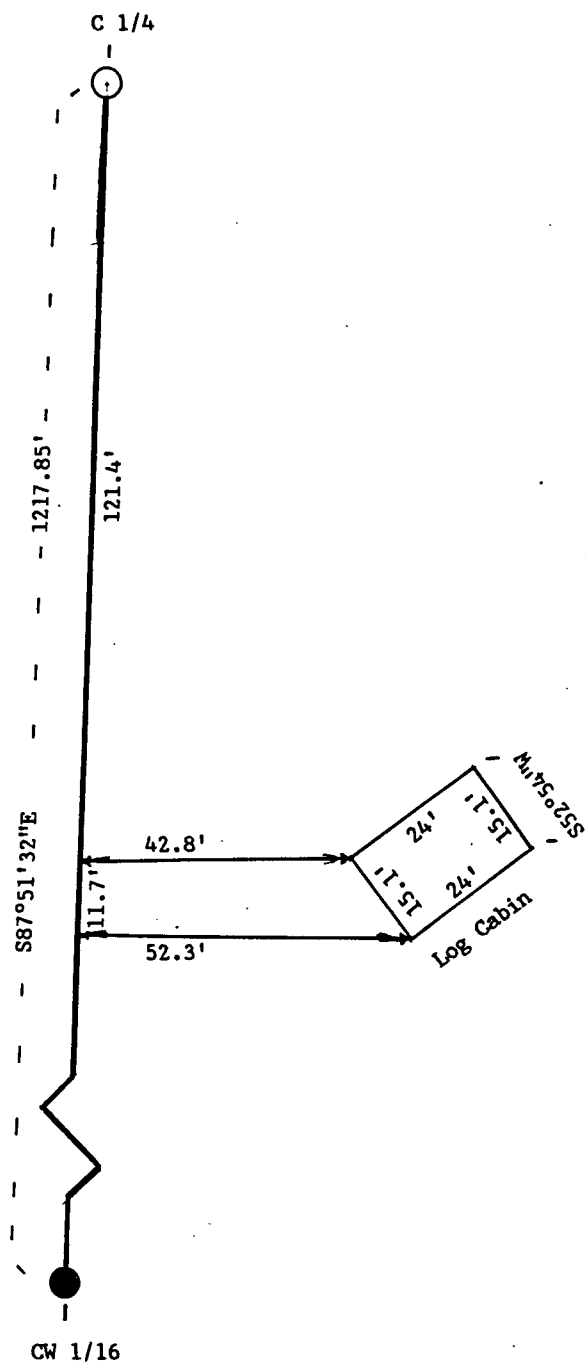
LEGEND

- Boundary line marked to standard.
- 1" diameter aluminum pipe monument, 36 inches long with an aluminum cap stamped to identify the corner.
- 1" diameter aluminum pipe monument, 60 inches long with an aluminum cap stamped to identify the corner.
- ◊ 2 1/2" diameter aluminum pipe monument, 36 inches long with an aluminum cap stamped to identify the corner.
- ◐ 2 1/2" diameter aluminum pipe monument, 60 inches long with an aluminum cap stamped to identify the corner.
- ◑ 2 1/2" diameter Berntsen, A-1 Federal Monument with a cap stamped to locate the corner.

NOTE: Bearings are referenced to solar observation.

DETAIL "A" OF LOG CABIN

NE 1/4 OF THE SW 1/4, SECTION 27, T37N, R12E.



L E G E N D

- Boundary line marked to standard.
 - 1" diameter aluminum pipe monument, 36 inches long with an aluminum cap stamped to identify the corner.
 - 1" diameter aluminum pipe monument, 60 inches long with an aluminum cap stamped to identify the corner.
- NOTE: Bearings are referenced to solar observation.

Stock No. 26273

Sheet 3 of 7

SURVEY NOTES

This survey was made by John C. Schulke, a Registered Land Surveyor in the State of Wisconsin, for the U.S. Department of Agriculture, Forest Service. The purpose of the survey was for recovery, establishing, marking and perpetuating the corners and boundary lines of the U.S. Government Land on the perimeter and within Section 27, Township 37 North, Range 12 East, Fourth Principal Meridian, Forest County, Wisconsin.

The original Government subdivision survey of this township was done by William E. Daugherty in 1859.

The bearings between corner positions are true bearings as determined by reference to polaris observations. The accuracy of this survey exceeds the State requirement for closure of 1 in 3,000. Corners recovered or established by this survey are marked as described in the map legend. Each monumented corner is referenced to blazed, scribed, painted and tagged bearing trees. Tie bearings are magnetic, and note corrected for declination.

CORNERS RECOVERED AND RESTORED1. Meander Corner Between Sections 22 and 27.

Found 1 inch iron pipe at the corner. Accepted iron pipe for the corner position and replaced it with an aluminum monument.

Corner references:

White Pine	24"	S37°W	25.45 feet
White Pine	9"	S21°E	65.63 feet
Red Pine	15"	S73°E	84.71 feet
Red Maple	20"	S87°E	74.56 feet
Waters edge		N50°W	10.0 feet
Steel sign post		Southwest	0.4 feet

2. Section Corner Common to Sections 22, 23, 26 and 27.

Reference monument recovered in place and as described on the Certified Land Corner Restoration form in the Forest County records, Document #112175, in 1977 by William Cochrane (S-1107). Set railroad spike in the center of Hansen Plat road from the certificate.

Corner references recovered:

Reference monument	2 1/2"	North	33.00 feet
Power Pole	#3712-26W1	S37°E	19.60 feet

Corner references:

Red Maple	5"	N30°W	31.20 feet
White Birch	16"	S57°W	62.27 feet

Steel sign post set along side the Reference Monument.

3. Quarter Corner Between Sections 26 and 27.

Restored by proportionate measurement.

Corner references:

White Birch	10"	N84°W	48.68 feet
Red Maple	4"	S39°W	12.68 feet
Spruce	5"	S08°W	40.65 feet
Balsam	5"	S74°E	17.99 feet
Steel sign post		Northwest	1.1 feet

Stock No. 26273

Sheet 4 of 7

4. Section Corner Common to Sections 26, 27, 34 and 35.

Recovered an aluminum pipe monument in place and as described on U.S Public Land Survey Monument Record form in the Forest County records, Document #127228, in 1984 by Alan Harrison.

5. Quarter Corner Between Sections 27 and 34.

Restored by proportionate measurement. Note: all bearing trees are dead due to high water in the area.

Corner references:

Tamarack	9"	S08°W	42.48 feet
Tamarack	11"	S75°W	23.07 feet
Tamarack	11"	N38°W	24.72 feet
Tamarack	13"	N06°W	94.48 feet
Steel sign post		Southeast	1.4 feet

6. Section Corner Common to Sections 27, 28, 33 and 34.

Found part of a post and the post hole.

Corner references:

Cedar	12"	S60°E	16.66 feet
White Birch	4"	S26°W	22.96 feet
White Pine	18"	N82°W	21.62 feet
Red Maple	6"	N30°E	21.91 feet
Steel sign post		Southeast	0.5 feet

7. Quarter Corner Between Sections 27 and 28.

Found evidence of a post hole.

Corner references recovered:

Red Oak	37"	N38°W	13.2 feet
Hemlock stump hole		N78°E	5.3 feet

Corner references:

Red Maple	7"	N06°E	35.52 feet
Twin Red Maple	4"	S11°E	15.12 feet
Hemlock	20"	N72°E	9.96 feet
Steel sign post		West	0.7 feet

8. Meander Corner Between Sections 27 and 28.

Found evidence of a post hole. The location for the area of search was arrived from retracing the adjacent meanders of Pine Lake to the East and West. Lakeshore is due North 34.0 feet from the monument and recovered a one inch diameter iron pipe N48°E 21.91 feet from the monument.

Corner references recovered:

Hemlock stump hole		S62°W	5.3 feet
Stump hole		S64°E	5.9 feet

Corner references:

White Birch	8"	N79°E	25.78 feet
White Birch	7"	S20°E	17.42 feet
White Birch	5"	N68°W	33.15 feet
Aspen	12"	N10°W	7.01 feet
Steel sign post		Southwest	1.1 feet

Stock No. 26273

Sheet 5 of 7

CORNERS ESTABLISHED1. Northeast Sixteenth Corner of Section 27.

Corner position is established at the intersection of the East Sixteenth line with the North Sixteenth line. The bearings of the Sixteenth lines were run on a mean bearing based on the bearings of the perimeter of the Northeast Quarter of Section 27.

Corner references:

Black Spruce	6"	N39°E	20.68 feet
Black Spruce	6"	S11°E	22.20 feet
Black Spruce	8"	S38°W	16.44 feet
Steel sign post		Southeast	0.6 feet

2. North Sixteenth Corner Between Sections 26 and 27.

Corner position is established at the midpoint and on line between the East Quarter corner and the Northeast Section corner of Section 27. Two inch iron pipe is N87°W a distance of 41.5 feet. The center of Pine Lake road is S27°W a distance of 22 feet. Monument is six inches below the surface of the ground.

Corner references:

Spruce	10"	S21°W	86.42 feet
Twin Sug. Maple	7"	N53°W	18.22 feet
Red Maple	4"	N12°E	45.38 feet
Steel sign post		North	1.0 feet

3. Center West Sixteenth Corner of Section 27.

Corner position is established at the midpoint and on line between the West Quarter corner and the Center Quarter corner of Section 27.

Corner references:

Red Maple	4"	S31°W	21.80 feet
Cedar	12"	S56°E	31.99 feet
Cedar	6"	N81°W	28.71 feet
Steel sign post		South	0.6 feet

4. Center Quarter Corner of Section 27.

Corner position is established at the intersection of the East-West Quarter line with the North-South Quarter line. The bearings of the North-South Quarter line was determined by the mean bearing of the East and West Section lines. The center of Pine Lake road is N13°W a distance of 27 feet. The center of Pine Lake road intersects Quarter line is West 102 feet from the monument.

Corner references:

Cedar	11"	S74°E	6.57 feet
White Pine	8"	S18°W	28.08 feet
Sugar Maple	5"	N14°E	68.05 feet
Steel sign post		West	1.4 feet

5. Center East Sixteenth Corner of Section 27.

Corner position is established at the midpoint and on line between the East Quarter corner and the Center Quarter corner of Section 27.

Corner references:

White Birch	12"	N22°W	6.07 feet
White Birch	9"	N75°E	23.21 feet
Cedar	15"	S43°E	20.38 feet
Steel sign post		Southeast	0.8 feet

Stock No. 26273

Sheet 6 of 7

6. Property Corner #1 Between Sections 26 and 27.

Corner position is established at the intersection of the East line of Section 27 with the South right-of-way line of the Soo Railroad for the Southeast Quarter of said Section.

Corner references:

Tamarack	10"	S81°E	8.43 feet
Tamarack	6"	S44°W	29.41 feet
Tamarack	4"	N59°W	24.70 feet
Steel sign post		Southwest	1.2 feet

7. Property Corner #2 Between Sections 26 and 27.

Corner position is established at the intersection of the East line of Section 27 with the North right-of-way line of the Soo Railroad for the Southeast Quarter of said Section. Note: All bearing trees are dead due to high water in the area.

Corner references:

Tamarack	7"	N03°E	30.43 feet
Tamarack	5"	N19°W	13.6 feet
Tamarack	5"	S73°E	20.91 feet
Steel sign post		Northeast	0.9 feet

8. Property Corner #3 Between Sections 27 and 28.

Corner position is established at the intersection of the West line of Section 27 with the South right-of-way of the Soo Railroad.

Corner references:

White Birch	7"	S12°W	14.84 feet
Tamarack	4"	N13°E	17.39 feet
Balsam	6"	S67°E	6.84 feet
Steel sign post		Southeast	1.0 feet

9. Property Corner #4 of Section 27.

Corner position is established at the intersection of the West Sixteenth line with the South right-of-way of the Soo Railroad.

Corner references:

Twin Red Maple	5"	N73°W	20.63 feet
Aspen	4"	S84°E	14.53 feet
White Birch	12"	S27°E	42.99 feet
Steel sign post		Southeast	0.9 feet

10. Property Corner #5 of Section 27.

Corner position is established at the intersection of the West Sixteenth line with the North right-of-way of the Soo Railroad.

Corner references:

Tamarack	12"	N89°E	28.67 feet
Red Maple	5"	N04°E	19.46 feet
Triple Wh. Birch	7"	N76°E	16.26 feet
Steel sign post		Northeast	0.8 feet

Stock No. 26273

Sheet 7 of 7

SURVEYOR'S AFFIDAVIT

State of Wisconsin)
County of Forest)ss

I, John C. Schulke, a Cadastral Surveyor, and a Registered Land Surveyor in the State of Wisconsin, hereby certify that I have surveyed and subdivided Section 27, Township 37 North, Range 12 East, Fourth Principal Meridian, State of Wisconsin.

The plat map and survey notes herewith are a correct representation of the land surveyed and subdivided. I have surveyed and subdivided said section in accordance with the rules for the survey of the public lands and with the statutes of the State of Wisconsin.



John C. Schulke
4604 South U.S-31
Ludington, MI 49431
R.L.S. State of Wisconsin
Date of Survey 1987
Certificate S-1665

John C. Schulke
Nov. 11, 1987

Survey requested by:

Dale B. Steeg
District Ranger

2/1/88
Date

