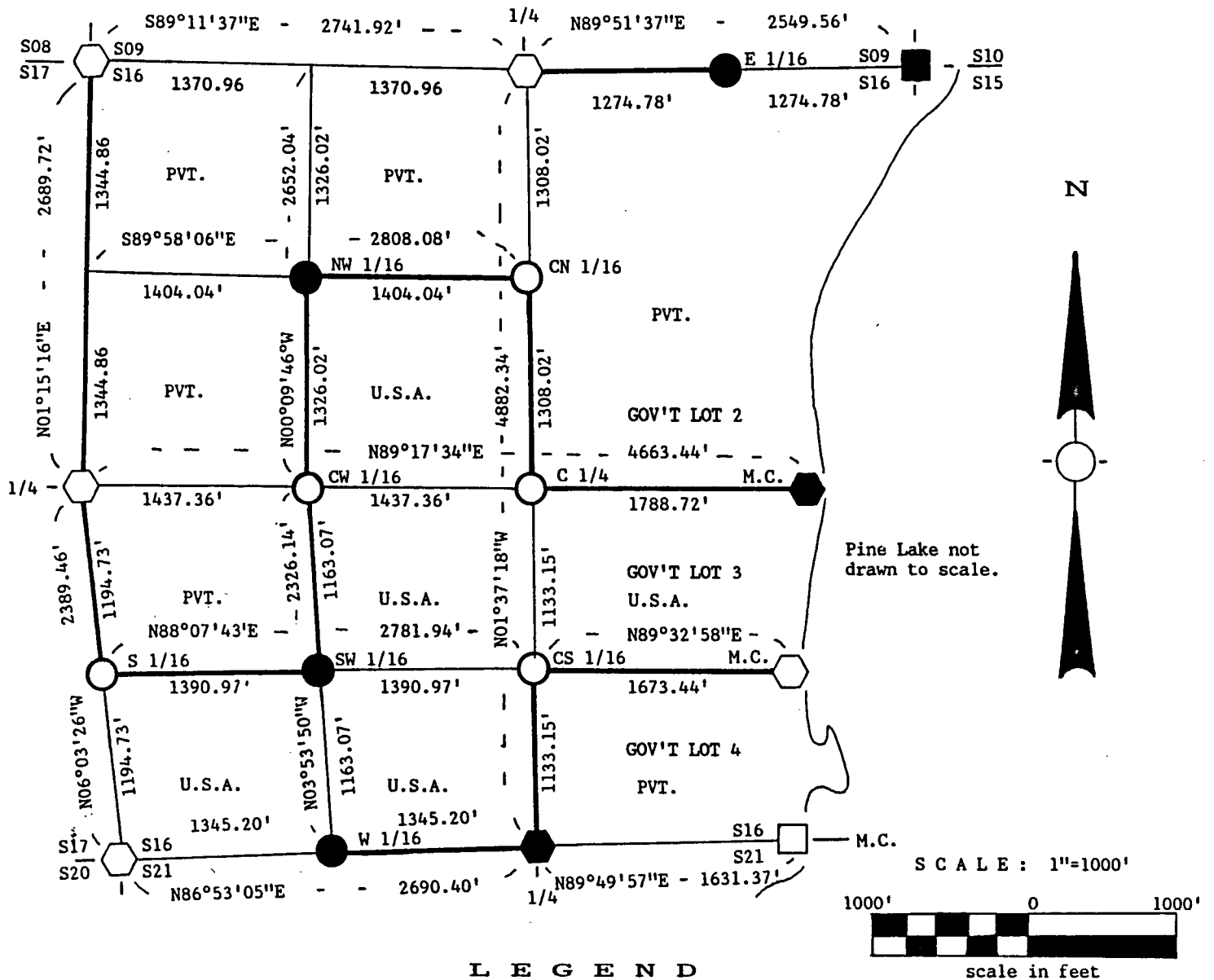


Stock No. 26273

FOREST CO SURVEYOR
 FILE # 371216-19860820
 DATE _____ BY _____

PLAT OF SURVEY FOR CERTIFIED LAND CORNER RESTORATION AND ESTABLISHMENT OF U.S. GOVERNMENT LAND

BEING THE CORNERS FOR THE SE 1/4 OF THE NW 1/4, THE NE 1/4 OF THE SW 1/4, THE S 1/2 OF THE SW 1/4 AND GOVERNMENT LOT 3. SECTION 16, T37N, R12E, FOURTH PRINCIPAL MERIDIAN FOREST COUNTY, STATE OF WISCONSIN



LEGEND

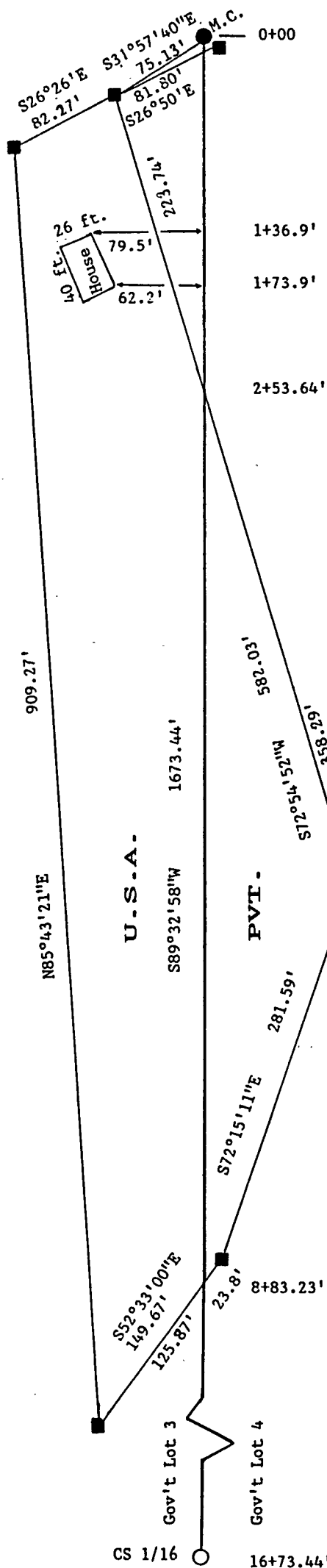
- Boundary line marked to standard.
- 1 inch diameter aluminum pipe monument, 36 inches long with an aluminum cap stamped to identify the corner.
- 1 inch diameter aluminum pipe monument, 60 inches long with an aluminum cap stamped to identify the corner.
- ⬡ 2 1/2 inch diameter aluminum pipe monument, 36 inches long with an aluminum cap stamped to identify the corner.
- ⬢ 2 1/2 inch diameter aluminum pipe monument; 60 inches long with an aluminum cap stamped to identify the corner.
- ◻ 1 inch diameter iron pipe with a brass cap stamped to identify the corner.
- ◻ 1 1/4 inch diameter axle shaft extending out of a rock pile.

NOTE: Bearings are referenced to polaris observations.

Plat ready for filing: Dale B. Staege District Ranger

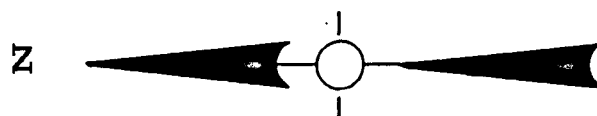
**PLAT OF SURVEY FOR
CERTIFIED LAND CORNER
RESTORATION AND ESTABLISHMENT**

BEING THE CORNER FOR THE SOUTH PART OF GOVERNMENT LOT 3
SECTION 16, T37N, R12E, FOURTH PRINCIPAL MERIDIAN
FOREST COUNTY, STATE OF WISCONSIN.



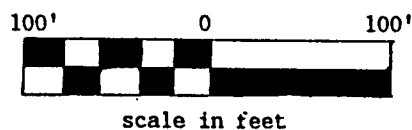
L E G E N D

- Boundary lines marked to standard.
- 2 1/2 inch diameter aluminum pipe monument, 36 inches long with an aluminum cap stamped to identify the corner.
- 1 inch diameter aluminum pipe monument, .36 inches long with an aluminum cap stamped to identify the corner.
- Recovered Iron pipes
- ⊠ Computed corner from certified survey of Document number 120809 done by Norman Harrison (S-1394).



N O T E : Bearings are referenced to polaris observation.

S C A L E : 1"=100'



Stock No. 26273

Sheet 3 of 6

SURVEY NOTES

This survey was made by John C. Schulke, a Registered Land Surveyor in the State of Wisconsin, for the U.S. Department of Agriculture, Forest Service. The purpose of the survey was for recovery, establishing, marking and perpetuating the corners and boundary lines of the U.S. Government Land on the perimeter and within Section 16, Township 37 North, Range 12 East, Fourth Principal Meridian, Forest County, Wisconsin.

The original Government survey of the township boundary was done by Alfred Millard, U.S. Deputy Surveyor, in May and June of 1858. The original Government subdivision survey of this township was done by William E. Daugherty in 1859.

The bearings between corner positions are true bearings as determined by reference to polaris observations. The accuracy of this survey exceeds the State requirement for closure of 1 in 3,000. Corners recovered or established by this survey are marked as described in the map legend. Each monumented corner is referenced to blazed, scribed, painted and tagged bearing trees. Tie bearings are magnetic, and not corrected for declination.

CORNERS RECOVERED AND RESTORED

1. Section Corner Common to Section 9, 10, 15, and 16.
Corner monument recovered in place.

Corner references recovered from Document #108399 done by Arnott (RLS-887):

Power Pole	3712-10L17	N16°E	90.9 feet
NW corner of house		S44°E	94.1 feet
Iron pipe	1 1/2"	East	Beside iron pipe with brass cap.

New corner references:

Scotch pine	9"	N75°W	10.63 feet
White Pine	12"	S36°W	42.75 feet
Black Ash	4"	N65°E	38.92 feet
Steel sign post		SE	0.4 feet

2. Quarter Corner Between Sections 9 and 16.
Recovered 1 1/4" dia. X 24" iron pipe at the corner. Accepted iron pipe for corner position and replaced it with an aluminum monument. Monument in the East and West fence line. Aspen woods to the East and open field to the West of the monument.

Corner references:

Aspen	7"	N05°E	34.37 feet
Aspen	9"	N87°E	27.12 feet
Aspen	7"	S49°E	29.50 feet
Well point	1 1/4"	S82°W	1.76 feet
Balsam	5"	S17°E	33.80 feet
Steel sign post		SE	0.8 feet

3. Section Corner Common to Section 8, 9, 16 and 17.
Corner monument recovered in place and as described on Certified Land Corner Restoration form in the Forest County records, Document #124240, in 1982 by Milo Stefan (RLS-1558).

4. Quarter Corner Between Sections 16 and 17.
Corner monument recovered in place and as described on Certified Land Corner Restoration form in the Forest County records, Document #124241, in 1982 by Milo Stefan (RLS-1558).

Stock No. 26273

Sheet 4 of 6

5. Section Corner Common to Section 16, 17, 20 and 21.
Found evidence of a post hole. Both GLO trees apparently had been blown down and recovered rotted Hemlock. Swamp call to the South 16.25 chains and swamp call to the East 3.0 chains both fit the GLO notes.
- Corner references recovered:
- | | | | | |
|-----------------|--|-------|------|------|
| Decayed Hemlock | | S20°E | 13.9 | feet |
| Stump hole | | S44°W | 7.3 | feet |
- New corner references:
- | | | | | |
|--------------------|-----|-------|-------|------|
| Spruce | 14" | N24°E | 18.68 | feet |
| Balsam | 14" | S73°E | 8.5 | feet |
| Balsam | 11" | N69°W | 29.38 | feet |
| Triple White Birch | 14" | N26°W | 45.84 | feet |
| Steel sign post | | SE | 0.7 | feet |
6. Quarter Corner Between Sections 16 and 21.
Found aluminum monument set by Bill Cochrane (RLS-1107) in 1983, in place.
- Corner references recovered:
- | | | | | |
|-------|-----|-------|-------|------|
| Cedar | 13" | N86°W | 13.58 | feet |
|-------|-----|-------|-------|------|
- New corner references:
- | | | | | |
|-----------------|-----|-------|------------|------|
| Cedar | 16" | N48°W | 16.99 | feet |
| Cedar | 8" | N38°E | 17.22 | feet |
| Cedar | 5" | S69°E | 22.93 | feet |
| Cedar | 12" | S16°W | 69.88 | feet |
| Steel sign post | | North | within 1.0 | foot |
7. Meander Corner Between Sections 16 and 21.
Found 1 1/4" dia. truck axle in a mound of boulders. Accepted axle shaft for corner position. Lake shore 6 feet East.
- Corner references:
- | | | | | |
|-----------------|-----|-------|-------|------|
| Twin Red Maple | 10" | N75°W | 44.53 | feet |
| Red Maple | 12" | N18°W | 55.99 | feet |
| Red Maple | 10" | N20°E | 36.02 | feet |
| Red Maple | 10" | S50°W | 33.41 | feet |
| Steel sign post | | NW | 2.1 | feet |

CORNERS ESTABLISHED

1. Meander Corner Between Government Lot 3 and Government Lot 4 of Section 16.
Corner set on South Sixteenth line 11 feet West of Lake Shore. The South Sixteenth line was run on a mean bearing from the Center South Sixteenth corner.
- Corner references:
- | | | | | |
|-----------------|-----|-------|-------|------|
| Hemlock | 15" | S59°E | 16.47 | feet |
| Red Maple | 6" | S51°W | 47.26 | feet |
| Red Oak | 17" | N40°W | 49.65 | feet |
| Steel sign post | | East | 1.1 | feet |
2. Meander Corner Between Government Lot 2 and Government Lot 3 of Section 16.
Corner set on the East-West 1/4 line 10 feet West of lake shore.
- Corner references:
- | | | | | |
|-----------------|----|-------|-------|------|
| Tamarack | 9" | N01°E | 25.99 | feet |
| Tamarack | 8" | S32°W | 22.85 | feet |
| Black Ash | 5" | S11°E | 21.74 | feet |
| Steel sign post | | East | 1.2 | feet |

Stock No. 26273

Sheet 5 of 6

3. East Sixteenth Corner Between Sections 9 and 16.
Corner position established at the midpoint and on line between the North Quarter corner and the Northeast Section corner of Section 16. Monument set in the fence line running East and West.
- Corner references:
- | | | | |
|-----------------|----|-------|------------|
| Tamarack | 6" | N13°W | 27.91 feet |
| Tamarack | 5" | N49°E | 38.83 feet |
| Tamarack | 9" | S76°W | 31.08 feet |
| Steel sign post | | NE | 0.7 feet |
4. Center North Sixteenth Corner of Section 16.
Corner position established at the midpoint and on line between the North Quarter corner and the Center Quarter corner of Section 16.
- Corner references:
- | | | | |
|-----------------|-----|-------|------------|
| Red Maple | 5" | S54°E | 19.33 feet |
| Red Maple | 12" | S66°W | 51.67 feet |
| Red Maple | 10" | N28°W | 50.17 feet |
| Steel sign post | | NE | 0.8 feet |
5. Northwest Sixteenth Corner of Section 16.
Corner position is at the intersection of the straight lines between opposing sixteenth corners on the perimeter of the Northwest Quarter of Section 16. The center of Atkins Road N65°W 145 feet from the monument.
- Corner references:
- | | | | |
|-----------------|-----|-------|------------|
| Tamarack | 7" | N19°E | 61.21 feet |
| Tamarack | 13" | S42°E | 64.35 feet |
| Cedar | 6" | N61°W | 71.99 feet |
| Steel sign post | | SE | 0.7 feet |
6. Center West Sixteenth Corner of Section 16.
Corner position established at the midpoint and on line between the West Quarter corner and the Center Quarter corner of Section 16. Recovered 1" dia. iron pipe N07°07'15"E 35.01 feet with a wooden post laying beside the pipe.
- Corner references:
- | | | | |
|-----------------|-----|-------|------------|
| Cedar | 14" | N07°E | 55.69 feet |
| Hemlock | 16" | S65°E | 42.10 feet |
| Hemlock | 15" | S34°W | 58.57 feet |
| Steel sign post | | East | 0.8 feet |
7. Center Quarter Corner of Section 16.
Corner position established at the intersection of the North-South Quarter line with East-West Quarter line. The bearing of the East-West Quarter line was determined by the mean bearing of the North and South Section lines. Recovered 1 1/2" dia. iron pipe N01°40'E 63.07 feet from the monument, with a square wooden post beside it.
- Corner references:
- | | | | |
|-----------------|-----|-------|------------|
| Yellow Birch | 8" | N64°E | 23.77 feet |
| Hemlock | 14" | S27°E | 52.48 feet |
| Hemlock | 8" | N15°W | 31.95 feet |
| Steel sign post | | East | 0.7 feet |
8. Center South Sixteenth Corner of Section 16.
Corner position established at the midpoint and on line between the South Quarter corner and the Southwest Section corner of Section 16. Recovered Wood post N25°42'W 39.5 feet from the monument.

Stock No. 26273

Sheet 6 of 6

Corner references:

Cedar	6"	N87°W	45.26 feet
Hemlock	16"	N11°E	29.09 feet
Hemlock	5"	S36°W	37.26 feet
Steel sign post		NW	0.8 feet

9. Southwest Sixteenth Corner of Section 16.

Corner position is established at the intersection of the straight lines between opposing sixteenth corners on the perimeter of the Southwest Quarter of Section 16.

Corner references:

Cedar	10"	S36°E	7.55 feet
Cedar	14"	S28°W	32.56 feet
Balsam	6"	N72°E	23.59 feet
Steel sign post		East	0.8 feet

10. South Sixteenth Corner Between Sections 16 and 17.

Corner position is established at the midpoint and on line between the West Quarter corner and the Southwest Section corner of Section 16. Corner fence post is N13°E 62.1 feet from the monument. The center of Atkins road is 24 feet N66°W from the monument.

Corner references:

Sug. Maple	5"	N72°E	4.63 feet
Sug. Maple	6"	S66°E	47.27 feet
Sug. Maple	7"	S02°E	33.08 feet
Steel sign post		SE	0.9 feet

11. West Sixteenth Corner Between Sections 16 and 21.

Corner position is established at the midpoint and on line between the South Quarter corner and the Southwest Section corner of Section 16.

Corner references:

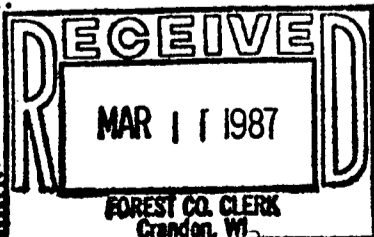
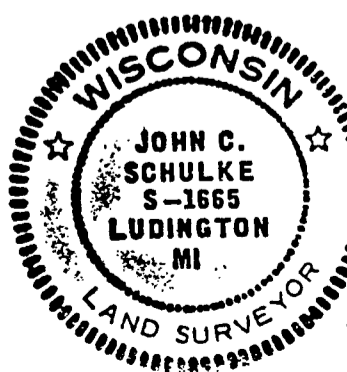
Cedar	13"	S74°W	13.16 feet
Cedar	12"	N06°E	12.82 feet
Cedar	11"	N86°E	35.52 feet
Steel sign post		NW	0.9 feet

SURVEYOR'S AFFIDAVIT

State of Wisconsin)
County of Forest)ss

I, John C. Schulke, a Cadastral Surveyor, and a Registered Land Surveyor in the State of Wisconsin, hereby certify that I have surveyed and subdivided Section 16, Township 37 North, Range 12 East, Fourth Principal Meridian, State of Wisconsin.

The plat and survey notes herewith are a correct representation of the land surveyed and subdivided. I have surveyed and subdivided said section in accordance with the rules for the survey of the public lands and with the statutes of the State of Wisconsin.



John C. Schulke
4604 South U.S.-31
Ludington, Mich. 49431
R.L.S. State of Wisconsin
Date of Survey 1986
Certificate S-1665

Dora C. James
County Clerk

John C. Schulke
8-20-86