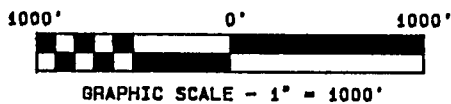
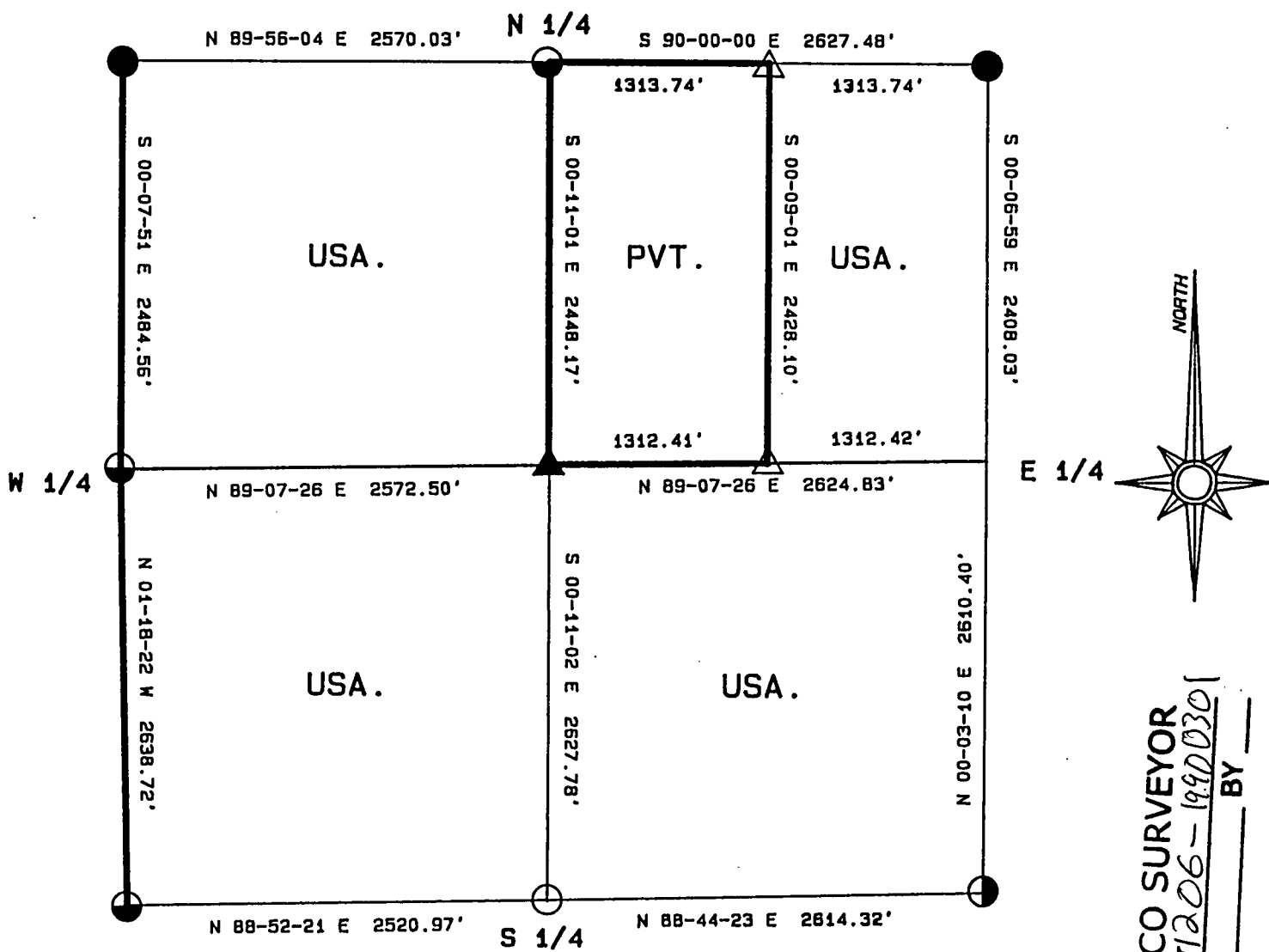


PLAT OF SURVEY FOR CERTIFIED LAND CORNER
RESTORATION AND ESTABLISHMENT

BEING THE CORNERS FOR THE WEST 1/2 OF THE SECTION,
THE EAST 1/2 OF THE NE 1/4 AND THE SE 1/4.

SECTION 6, TOWNSHIP 37 NORTH, RANGE 12 EAST.

COUNTY OF FOREST, STATE OF WISCONSIN



LEGEND

- 2 1/2 INCH DIAMETER ALUMINUM PIPE MONUMENT 36 INCHES LONG WITH AN ALUMINUM CAP.
- ◐ 2 1/2 INCH DIAMETER ALUMINUM PIPE MONUMENT 60 INCHES LONG WITH AN ALUMINUM CAP.
- △ 1 INCH DIAMETER ALUMINUM PIPE MONUMENT 36 INCHES LONG WITH AN ALUMINUM CAP.
- ▲ 1 INCH DIAMETER ALUMINUM PIPE MONUMENT 60 INCHES LONG WITH AN ALUMINUM CAP.
- ◑ 2 1/2 INCH DIAMETER GALVANIZED IRON PIPE MONUMENT 60 INCHES LONG WITH BRASS CAP.
- 6 INCH DIAMETER CONCRETE MONUMENT WITH BRASS CAP.
- BOUNDARY LINE MARKED TO FOREST SERVICE STANDARD.

FOREST CO SURVEYOR
FILE # 371206-19900301
DATE _____ BY _____

Stock No. 26273

T37N R12E, SECTION 6

page 2 of 4

SURVEY NOTES

This survey was made by the U.S. Department of Agriculture, Forest Service for the purpose of recovering, restoring, establishing, marking, and perpetuating the corners and boundary lines of U.S. Government land on the perimeter and within Section 6, Township 37 North, Range 12 East, Fourth Principal Meridian, Forest County, State of Wisconsin as shown on the Plat map herewith.

The U.S. Government land within Section 6 was acquired in 1932, 1935, 1939, 1940 and 1947.

The original government subdivision of this township was made in 1859.

The bearings on this plat of survey are referenced to the bearing between the North Quarter and the Northeast Section corner as determined by the 1937 Dependent Resurvey. The accuracy of this survey exceeds the State requirement for closure of 1 in 3,000. Corners recovered or established by this survey are marked as described in the map legend. Each monumented corner is referenced to blazed, scribed, painted and tagged bearing trees. Tie bearings are magnetic, and not corrected for declination.

The field notes and a copy of the Plat of survey are on file in the Forest Service Supervisor's Office at Rhinelander, Wisconsin.

CORNERS RECOVERED AND RESTORED1. Northeast Section Corner.

Corner position is recovered as restored by Dependent Resurvey in 1937 from remains of original bearing trees.

Corner references recovered:

Hemlock	(snag)	N85°E	59 links
Y. Birch	13"	S50°E	49 links
Y. Birch	(snag)	N52°W	80 links

New Corner references:

Maple	6"	N23°E	28.90 feet
Y. Birch	13"	S50°E	32.48 feet
Basswood	9"	S47°W	21.62 feet
Maple	12"	N65°W	23.35 feet
Steel sign post		Northwest	1.00 feet

2. East Quarter Corner.

Corner position restored from a recovered 3x3" wood post set by technicians for the Argonne Experimental Forest many years ago.

Corner references:

Cedar	8"	N62°E	19.48 feet
Hemlock	9"	N22°W	26.70 feet
Steel sign post		West	1.00 feet

3. Southeast Section Corner.

Corner position recovered as restored by a Survey Contractor working for Forest Service in 1988.

Corner references recovered:

No bearing trees were made (open marsh)			
Steel sign post		South	1.00 feet

4. South Quarter Corner.

Corner position restored from a recovered 3x3" wood post set by technicians for the argonne Experimental Forest many years ago.

Corner references:

Maple	19"	N70°E	21.65 feet
Maple	9"	S26°E	31.30 feet
Steel sign post		Southeast	1.00 feet

Stock No. 26273

T37N R12E SECTION 6

page 3 of 4

5. Southwest Section Corner.

Corner position recovered as restored by Philip Hansen in 1978 after recovering Iron Pipe monument set by H. C. Lawrence Registered Land Surveyor some years prior.

Corner references recovered:

Maple	7"	N24°E	13.99 feet
Maple	8"	S28°E	7.39 feet
S. Maple	6"	S56°W	10.36 feet
S. Maple	7"	N19°W	23.83 feet

6. West Quarter Corner.

Corner position recovered as restored by Philip Hansen in 1978 from recovered Iron Pipe and original bearing trees.

Corner references recovered:

Cedar	7"	N47°E	39.79 feet
Cedar	7"	East	20.46 feet
Cedar	12"	S82°W	27.26 feet
Steel sign post		West	1.00 feet

7. Northwest Section Corner.

Corner position recovered as restored by Dependent Resurvey in 1937 from remains of original bearing trees.

Corner references recovered:

Cedar	8"	N69°E	48.84 feet
Cedar	8"	S25°E	23.10 feet
Steel sign post		Southeast	1.00 feet

8. North Quarter Corner.

Corner position recovered as reestablished by Dependent Resurvey in 1937 at proportionate distance.

New corner references:

Maple	5"	S85°E	32.94 feet
Maple	7"	S12°E	52.30 feet
Steel sign post		Northwest	1.50 feet

CORNERS ESTABLISHED1. East Sixteenth Corner between Sections 31 and 6.

Corner position established at midpoint and on line between the North Quarter Corner and the Northeast Section Corner.

Corner references:

Maple	10"	N62°E	18.09 feet
Maple	8"	S17°E	9.42 feet
Steel sign post		Northwest	1.90 feet

2. Center-East Sixteenth Corner.

Corner position established at midpoint and on line between the Center-Quarter Corner and the East Quarter Corner.

Corner references:

Maple	13"	S55°E	22.64 feet
Maple	10"	S08°W	16.83 feet
Steel sign post		West	Alongside

3. Center-Quarter Corner.

Corner position established at the intersection of straight lines between opposing Quarter Corner positions on the perimeter of the Section.

Corner references:

Cedar	11"	S82°W	28.20 feet
Cedar	9"	N03°W	9.35 feet
Steel sign post		Southwest	0.50 feet

Stock No. 26273

T37N R12E SECTION 6

page 4 of 4

SURVEYOR'S AFFIDAVIT

State of Wisconsin)
 County of Forest)

I William B. Cochrane, Land Surveyor, U.S. Forest Service, and a registered Land Surveyor in the State of Wisconsin, hereby certify that I have surveyed and subdivided Section 6 Township 37 North, Range 12 East, Fourth Principal Meridian, State of Wisconsin.

The plat map and survey notes herewith are a correct representation of the land surveyed and divided. I have surveyed and subdivided said section in accordance with the rules for the survey of the public lands and with the statutes of the State of Wisconsin.



William B. Cochrane
 Land Surveyor, U.S.D.A. Forest Service
 R.L.S. State of Wisconsin
 Certificate S-1107

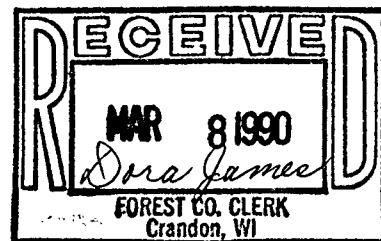
Date of Survey: 1988.

Survey requested by:

Cam Gordon
District Ranger

3/1/90

Date

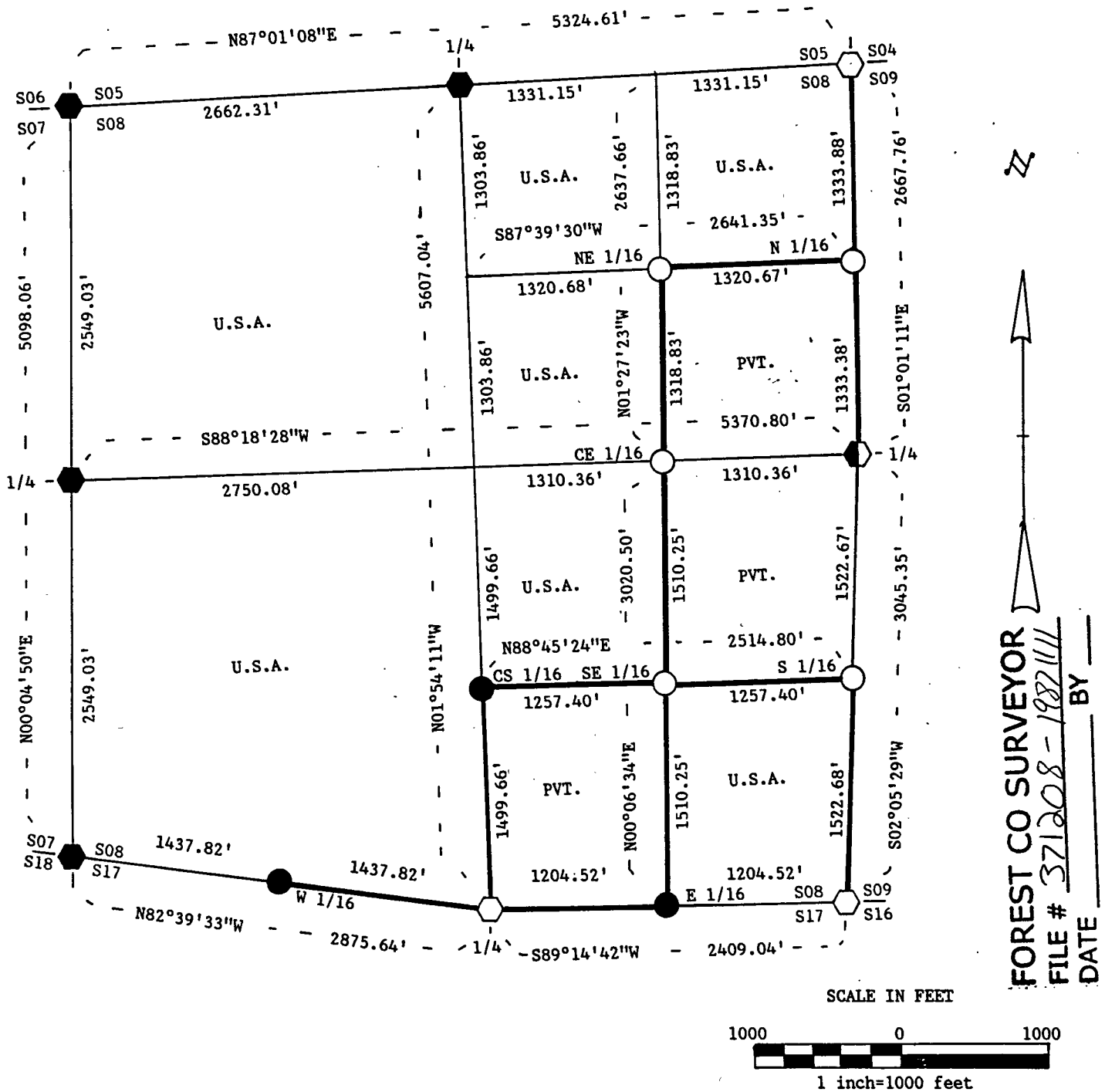


Stock No. 26273

PLAT OF SURVEY FOR CERTIFIED LAND CORNER RESTORATION AND ESTABLISHMENT OF U.S. GOVERNMENT LAND

BEING THE CORNERS FOR THE NW 1/4, THE SW 1/4, THE N 1/2 OF THE NE 1/4, THE SW 1/4 OF THE NE 1/4, THE NW 1/4 OF THE SE 1/4 AND THE SE 1/4 OF THE SE 1/4.

SECTION 08, T37N, R12E, FOURTH PRINCIPAL MERIDIAN FOREST COUNTY, STATE OF WISCONSIN



- Boundary line marked to standard.
 - 1" diameter aluminum pipe monument, 36 inches long with an aluminum cap stamped to identify the corner.
 - 1" diameter aluminum pipe monument, 60 inches long with an aluminum cap stamped to identify the corner.
 - ◊ 2 1/2" diameter aluminum pipe monument, 30 inches long with an aluminum cap stamped to identify the corner.
 - ◊ 2 1/2" diameter aluminum pipe monument, 36 inches long with an aluminum cap stamped to identify the corner.
 - ◊ 2 1/2" diameter aluminum pipe monument, 60 inches long with an aluminum cap stamped to identify the corner.
- Note: Bearings are referenced to polaris observations.

FOREST CO SURVEYOR
 FILE # 371208-1982111
 DATE BY

Stock No. 26273

Sheet 2 of 5

SURVEY NOTES

This survey was made by John C. Schulke, a Registered Land Surveyor in the State of Wisconsin, for the U.S. Department of Agriculture, Forest Service. The purpose of the survey was for recovery, establishing, marking and perpetuating the corners and boundary lines of the U.S. Government Land on the perimeter and within Section 08, Township 37 North, Range 12 East, Fourth Principal Meridian, Forest County, Wisconsin.

The original Government survey of the township boundary was done by Alfred Millard, a U.S. Deputy Surveyor, in May and June of 1858. The original Government subdivision survey of this township was done by William E. Daugherty in 1859.

The bearings between corner positions are true bearings as determined by reference to polaris observations. The accuracy of this survey exceeds the State requirement for closure of 1 in 3,000. Corners recovered or established by this survey are marked as described in the map legend. Each monumented corner is referenced to blazed, scribed, painted and tagged bearing trees. Tie bearings are magnetic, and not corrected for declination.

CORNERS RECOVERED AND RESTORED

1. Section Corner Common to Sections 7, 8, 17 and 18.
Recovered wooden square post laying on it's side.

Recovered corner references:

Tamarack stump		N02°W	31.0 feet
----------------	--	-------	-----------

Corner references:

Spruce	5"	S86°W	19.77 feet
Spruce	5"	N20°W	33.40 feet
Spruce	4"	S71°E	2.85 feet
Spruce	4"	S05°W	24.21 feet
Steel sign post		Southeast	1.0 feet

2. Quarter Corner Between Sections 8 and 17.
Used GLO swamp calls to recover corner and found a very rotten remains of a Cedar post.

Recovered corner references:

Hemlock stump		N10°W	7.3 feet
---------------	--	-------	----------

Corner references:

Twin Hemlock	15"	N67°E	42.55 feet
Sugar Maple	6"	S45°E	25.64 feet
Sugar Maple	6"	S49°W	11.84 feet
Sugar Maple	6"	N40°W	16.36 feet
Steel sign post		Southeast	1.1 feet

3. Section Corner Common to Sections 8, 9, 16 and 17.
Corner monument recovered in place and as described on Certified Land Corner Restoration form in the Forest County records, Document #124240, in 1982 by Milo E. Stefan (RLS-1558).

4. Quarter Corner Between Sections 8 and 9.
Corner position is restored as an obliterated corner at the intersection of an old boundary fence lines. The monument is 6 inches below the road surface.

Corner references:

White Birch	10"	S50°E	23.89 feet
Black Ash	6"	N62°E	31.14 feet
Tamarack	6"	N48°W	82.59 feet
Red Maple	4"	S84°W	102.67 feet
Steel sign post		Southeast	14.1 feet

Stock No. 26273

Sheet 3 of 5

5. Section Corner Common to Sections 4, 5, 8 and 9.
Corner monument recovered in place and as described on Certified Land Corner Restoration form in the Forest County records, Document #124239, in 1982 by Milo E. Stefan (RLS-1558).

6. Quarter Corner Between Sections 5 and 8.
Corner position restored by proportionate measurement.

Corner references:

Tamarack	5"	N85°E	14.93 feet
Cedar	7"	N43°E	33.51 feet
Cedar	7"	N51°W	37.23 feet
Cedar	9"	S31°W	44.02 feet
Steel sign post		Northwest	0.9 feet

7. Section Corner Common to Sections 5, 6, 7 and 8.
Corner position restored from the railroad records.

Corner references recovered:

Tamarack stub		N58°W	9.3 feet
---------------	--	-------	----------

Corner references:

Steel sign post		South	1.0 feet
Open swamp	no available trees.		

8. Quarter Corner Between Section 7 and 8.
Corner position restored by proportionate measurement.

Corner references:

Cedar	20"	N05°W	140.85 feet
White Pine	24"	S46°W	142.25 feet
Black Spruce	8"	N78°E	71.65 feet
Creek	10 ft. wide	S46°W	17.0 feet
Steel sign post		Northeast	0.9 feet

CORNERS ESTABLISHED

1. Northeast Sixteenth Corner of Section 8.
Corner position is established at the intersection of the straight lines between opposing sixteenth corners on the perimeter of the Northeast Quarter of Section 8.

Corner references:

Red Maple	7"	N58°E	6.86 feet
Red Maple	10"	S42°W	31.08 feet
Red Maple	10"	S25°E	45.23 feet
Steel sign post		Northwest	0.7 feet

2. North Sixteenth Corner of Sections 8 and 9.
Corner position is established at the midpoint and on line between the East Quarter corner and the Northeast Section corner of Section 8.

Corner references:

Red Maple	8"	S61°E	1.84 feet
Red Maple	10"	N05°E	8.04 feet
Red Maple	12"	N58°W	39.37 feet
Steel sign post		South	0.6 feet

Stock No. 26273

Sheet 4 of 5

3. Center East Sixteenth Corner of Section 8.

Corner position is established at the midpoint and on line between the East Quarter corner and the Center Quarter corner of Section 8.

Corner references:

Red Maple	6"	N36°E	13.38 feet
Cedar	8"	S19°W	83.35 feet
Aspen	5"	N67°W	44.20 feet
Steel sign post		Northwest	0.4 feet

4. Center South Sixteenth Corner of Section 8.

Corner position is established at the midpoint and on line between the South Quarter corner and the Center Quarter corner of Section 8.

Corner references:

Cedar	11"	S75°E	17.12 feet
Cedar	12"	N12°E	30.91 feet
Cedar	11"	N83°W	27.80 feet
Steel sign post		West	1.1 feet

5. Southeast Sixteenth Corner of Section 8.

Corner position is established at the intersection of the straight lines between opposing sixteenth corners on the perimeter of the Southeast Quarter of Section 8.

Corner references:

Sugar Maple	4"	N53°E	67.30 feet
Hemlock	13"	N16°E	45.46 feet
Sugar Maple	4"	S03°W	118.35 feet
Steel sign post		Southeast	0.8 feet

6. South Sixteenth Corner Between Sections 8 and 9.

Corner position is established at the midpoint and on line between the East Quarter corner and the Southeast Section corner of Section 8.

Corner references:

Red Maple	4"	S05°E	26.47 feet
Red Maple	5"	S32°W	33.54 feet
Tamarack	7"	N59°E	31.56 feet
Steel sign post		Southwest	0.8 feet

7. West Sixteenth Corner Between Sections 8 and 17.

Corner position is established at the midpoint and on line between the South Quarter corner and the Southwest Section corner of Section 8.

Corner references:

Black Spruce	4"	S74°W	33.84 feet
Tamarack	3"	N21°W	26.58 feet
Tamarack	4"	N51°E	54.67 feet
Steel sign post		West	0.7 feet

8. East Sixteenth Corner Between Sections 8 and 17.

Corner position is established at the midpoint and on line between the South Quarter corner and the Southeast Section corner of Section 8.

Corner references:

Tamarack	5"	South	27.75 feet
Tamarack	4"	S82°E	27.26 feet
Tamarack	5"	N16°E	28.10 feet
Steel sign post		Southeast	0.9 feet

Stock No. 26273

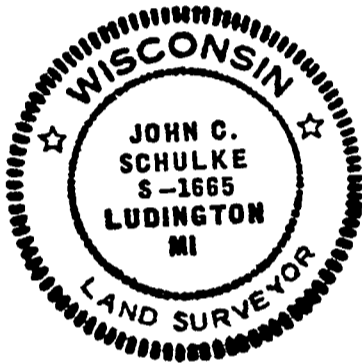
Sheet 5 of 5

SURVEYOR'S AFFIDAVIT

State of Wisconsin)
 County of Forest)^{ss}

I, John C. Schulke, A Cadastral Surveyor, and a Registered Land Surveyor in the State of Wisconsin, hereby certify that I have surveyed and subdivided Section 08, Township 37 North, Range 12 East, Fourth Principal Meridian, State of Wisconsin.

The plat map and survey notes herewith are a correct representation of the land surveyed and subdivided. I have surveyed and subdivided said section in accordance with the rules for the survey of the public lands and with the statutes of the State of Wisconsin.



John C. Schulke
 4604 South U.S.-31
 Ludington, MI 49431
 R.L.S. State of Wisconsin
 Date of Survey 1987
 Certificate S-1665

John C. Schulke
 Nov. 11, 1987

Survey requested by: _____
 District Ranger Date

