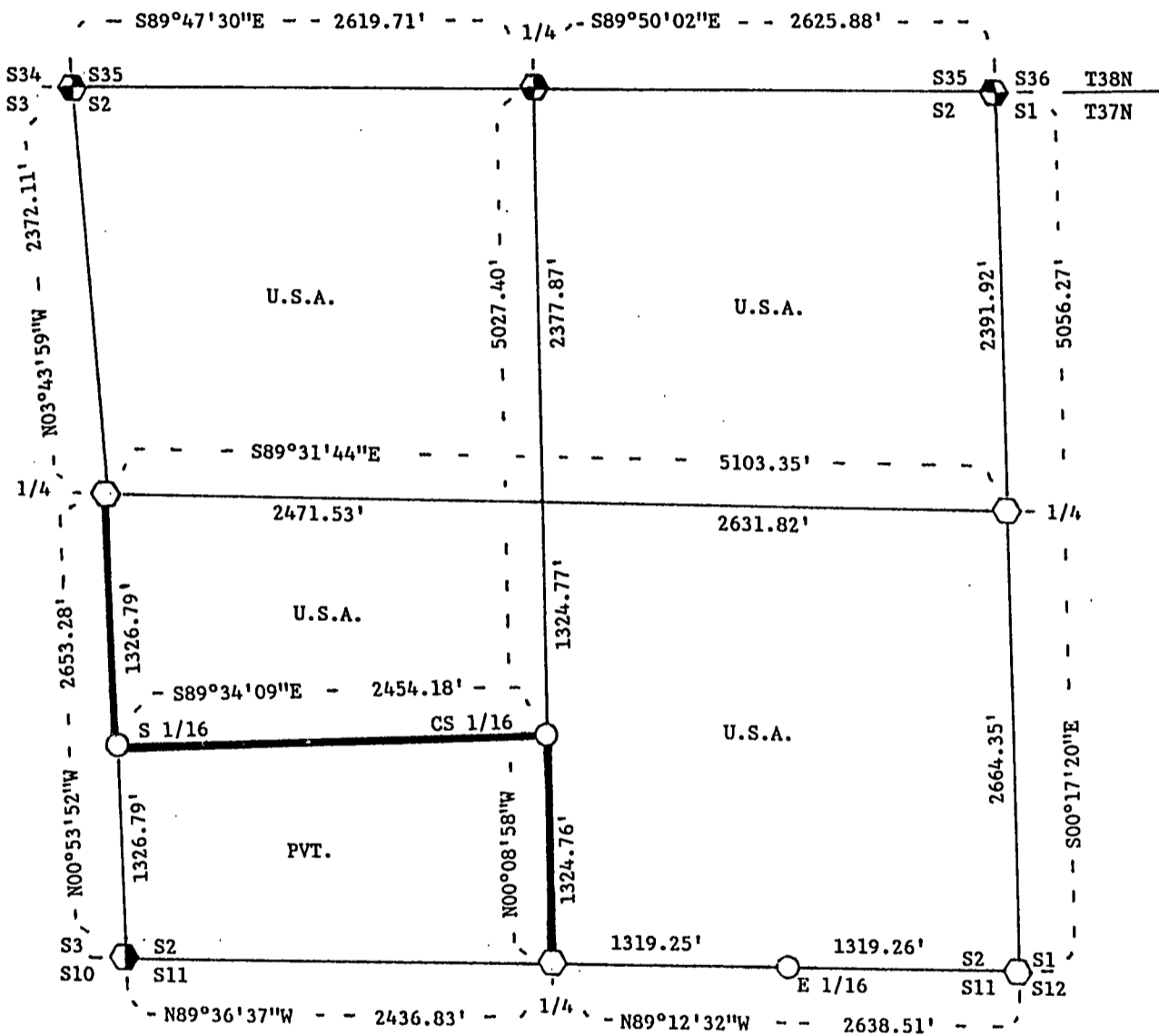
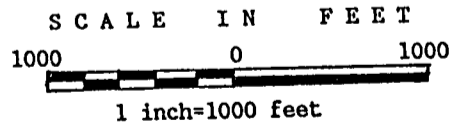


**PLAT OF SURVEY FOR CERTIFIED LAND CORNER RESTORATION AND ESTABLISHMENT OF U.S. GOVERNMENT LAND**

BEING THE CORNERS FOR THE NORTHWEST 1/4, NORTHEAST 1/4, NORTH 1/2 OF THE SOUTHWEST 1/4 AND THE SOUTHEAST 1/4. SECTION 2, T37N, R12E, FOURTH PRINCIPAL MERIDIAN FOREST COUNTY, STATE OF WISCONSIN



**LEGEND**



- Boundary line marked to standard.
- 1" diameter aluminum pipe monument, 36 inches long with an aluminum cap stamped to identify the corner.
- ◌ 2 1/2" diameter aluminum pipe monument, 36 inches long with an aluminum cap stamped to identify the corner.
- ⊙ Railroad spike, 0.3 ft. below the surface of the black top road, with a 2 1/2" diameter witness aluminum magnetic cap monument, 36 inches long with an aluminum cap stamped to identify the location of the corner.
- ⊕ Iron post, 3 ft. long, 2" dia. and in a mound of stones, with a brass cap stamped to identify the corner.
- ⊙ Concrete monument, 24 " long, 6" dia., with a brass tablet stamped to identify the corner.

NOTE: Bearings are referenced to solar observations.

**FOREST CO SURVEYOR**  
 FILE # 371202-19891103  
 DATE \_\_\_\_\_ BY \_\_\_\_\_

Stock No. 26273

Sheet 2 of 4

## SURVEY NOTES

This survey was made by John C. Schulke, a Registered Land Surveyor in the State of Wisconsin, for the U.S. Department of Agriculture, Forest Service. The purpose of the survey was for recovery, establishing, marking and perpetuating the corners and boundary lines of the U.S. Government Land on the perimeter and within Sections 2, Township 37 North, Range 12 East, Fourth Principal Meridian, Forest County, Wisconsin.

The original Government survey of the township boundary was done by Alfred Millard, U.S. Deputy Surveyor, in May and June of 1858. The original Government subdivision survey of this township was done by William E. Daugherty in 1859. A Dependent Resurvey was done by Wesson Cook and approved by the General Land Office in 1937 for the North township line and the North two miles of the East township line.

The bearings between corner positions are true bearings as determined by reference to solar observations. The accuracy of this survey exceeds the State requirement for closure of 1 in 3,000. Corners recovered or established by this survey are marked as described in the map legend. Each monumented corner is referenced to blazed, scribed, painted and tagged bearing trees. Tie bearings are magnetic, and not corrected for declination.

## CORNERS RECOVERED AND RESTORED

1. Section Corner Common To Sections 2, 3, 34 and 35.

Corner monument recovered in place. Monument in a mound of stones.

## Recovered corner references:

Aspen stump hole		N01°W	15.2 feet
Aspen stump		N25°E	23.1 feet
Aspen stump		S58°E	6.6 feet

## New corner references:

Sugar Maple	8"	N34°W	22.24 feet
Sugar Maple	5"	N47°E	31.97 feet
Sugar Maple	12"	S63°E	19.06 feet
Sugar Maple	6"	S04°W	23.29 feet
Steel sign post		East	1.1 feet

2. Quarter Corner Between Sections 2 and 35.

Corner monument recovered in place. Monument in a mound of stones.

## Recovered corner references:

Maple	13"	S43°W	8.59 feet
stump hole		N56°E	3.6 feet

## New corner references:

Maple	10"	N07°W	9.21 feet
Maple	14"	S69°E	41.76 feet
Maple	9"	S87°W	60.62 feet
Steel sign post		Northwest	1.6 feet

3. Section Corner Common To Sections 1, 2, 35 and 36.

Corner monument recovered in place.

## Recovered corner references:

Dead Elm	20"	N30°W	8.70 feet
Hemlock	20"	S84°W	34.02 feet
Stump hole		S32°E	49.5 feet
Stump hole		N12°E	12.5 feet

## New corner references:

Maple	10"	N12°W	20.75 feet
Maple	6"	N34°E	17.80 feet
Maple	11"	S20°E	45.58 feet
Steel sign post		Northwest	1.2 feet

Stock No. 26273

Sheet 3 of 4

4. Quarter Corner Between Sections 1 and 2.

Corner position restored by proportionate measurement.

## Corner references:

Twin Red Maple	4"	N52°W	43.01 feet
Twin Red Maple	4"	N02°E	76.96 feet
Red Maple	7"	N74°E	59.37 feet
Aspen	7"	S08°W	24.38 feet
Steel sign post		North	1.0 feet

5. Section Corner Common To Sections 1, 2, 11 and 12.

Corner position restored by proportionate measurement. Monument placed in a mound of stones.

## Corner references:

Sugar Maple	8"	N48°E	12.43 feet
Hemlock	8"	S55°E	25.49 feet
Sugar Maple	4"	S40°W	30.48 feet
Sugar Maple	6"	S89°W	22.85 feet
Steel sign post		South	1.2 feet

6. Quarter Corner Between Sections 2 and 11.

Set a monument in the position described by the local land owners as the location of the original corner. Fence line running North and South. Fence corner bears North a distance of 2.2 ft. from the monument.

## Corner references:

Sugar Maple	5"	N87°E	7.07 feet
Sugar Maple	5"	S09°E	32.22 feet
Birch	10"	N36°W	22.96 feet
Balsam	7"	S39°W	35.90 feet
Steel sign post		South	1.0 feet

7. Section Corner Common To Sections 2, 3, 10 and 11.

Found spike in the road in the location described by adjacent land owners. The position has long been accepted by property owners as the corner. Steel sign post bears South a distance of 0.9 ft. from the witness monument.

## Corner references:

Sugar Maple	14"	N62°W	36.54 feet
Twin Sugar Maple	10"	N78°E	54.48 feet
Iron pipe	1"	N02°W	21.20 feet
Witness Monument	2 1/2"	S04°45'W	33.0 feet

8. Quarter Corner Between Sections 2 and 3.

Set monument at an old fence corner which is accepted by the adjacent land owners as the location of the corner. Monument placed in a mound of stones. Fence line running West and South from the monument.

## Corner references:

Sugar Maple	7"	S75°W	15.87 feet
Sugar Maple	8"	N20°E	26.91 feet
Clump of Sugar Maple	6"	S40°E	14.03 feet
Sugar Maple	6"	S34°W	25.67 feet
Steel sign post		North	1.1 feet

Stock No. 26273

Sheet 4 of 4

## CORNERS ESTABLISHED

1. South Sixteenth Corner Between Sections 2 and 3.  
Corner position is established at the midpoint and on line between the West Quarter corner and the Southwest Section corner of Section 2. Monument placed in a mound of stones. Fence line running East and West bears South a distance of 1.0 feet from the monument.

## Corner references:

Iron pipe	1 1/4"	S84°22'59"E	12.37 feet
Sugar Maple	6"	S63°W	9.40 feet
Sugar Maple	7"	N39°E	39.06 feet
Steel sign post		Northeast	0.9 feet

2. Center South Sixteenth Corner Of Section 2.  
Corner position is established at the midpoint and on line between the South Quarter corner and the Center Quarter corner of Section 2. Fence line running East and West bears South a distance of 22 feet from the monument.

## Corner references:

chiseled an "X" on rock	4.5'X4.0'X2.0'	N43°W	12.47 feet
chiseled an "X" on rock	4.8'X4.8'X2.8'	S59°E	20.45 feet
Steel sign post		West	0.7 feet

3. East Sixteenth Corner Between Sections 2 and 11.  
Corner position is established at the midpoint and on line between the South Quarter corner and the Southeast Section corner of Section 2.

## Corner references:

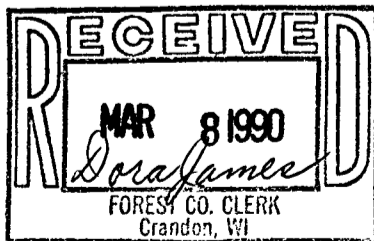
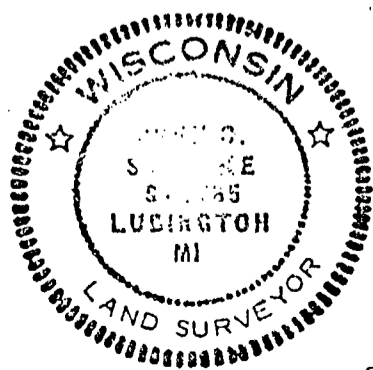
Tamarack	7"	N66°E	19.15 feet
Twin Sugar Maple	5"	N84°W	19.42 feet
Steel sign post		South	0.9 feet

## SURVEYOR'S AFFIDAVIT

State of Wisconsin)  
County of Forest )<sup>ss</sup>

I, John C. Schulke, a Cadastral Surveyor, and a Registered Land Surveyor in the State of Wisconsin, hereby certify that I have surveyed and subdivided Section 2, Township 37 North, Range 12 East, Fourth Principal Meridian, State of Wisconsin.

The plat map and survey notes herewith are a correct representation of the land surveyed and subdivided. I have surveyed and subdivided said section in accordance with the rules for the survey of the public lands and with the statutes of the State of Wisconsin.



John C. Schulke  
4604 So. Pere Marquette Rd.  
Ludington, MI 49431  
R.L.S. State of Wisconsin  
Date of Survey 1989  
Certificate S-1665

*John C. Schulke*

Nov. 3rd, 1989

Survey requested by: *Doris James* 1989  
District Ranger Date