

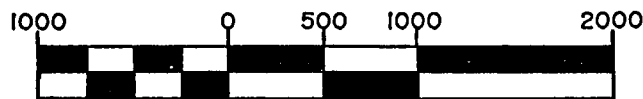
# PLAT OF SURVEY

SHEET 1 OF 4

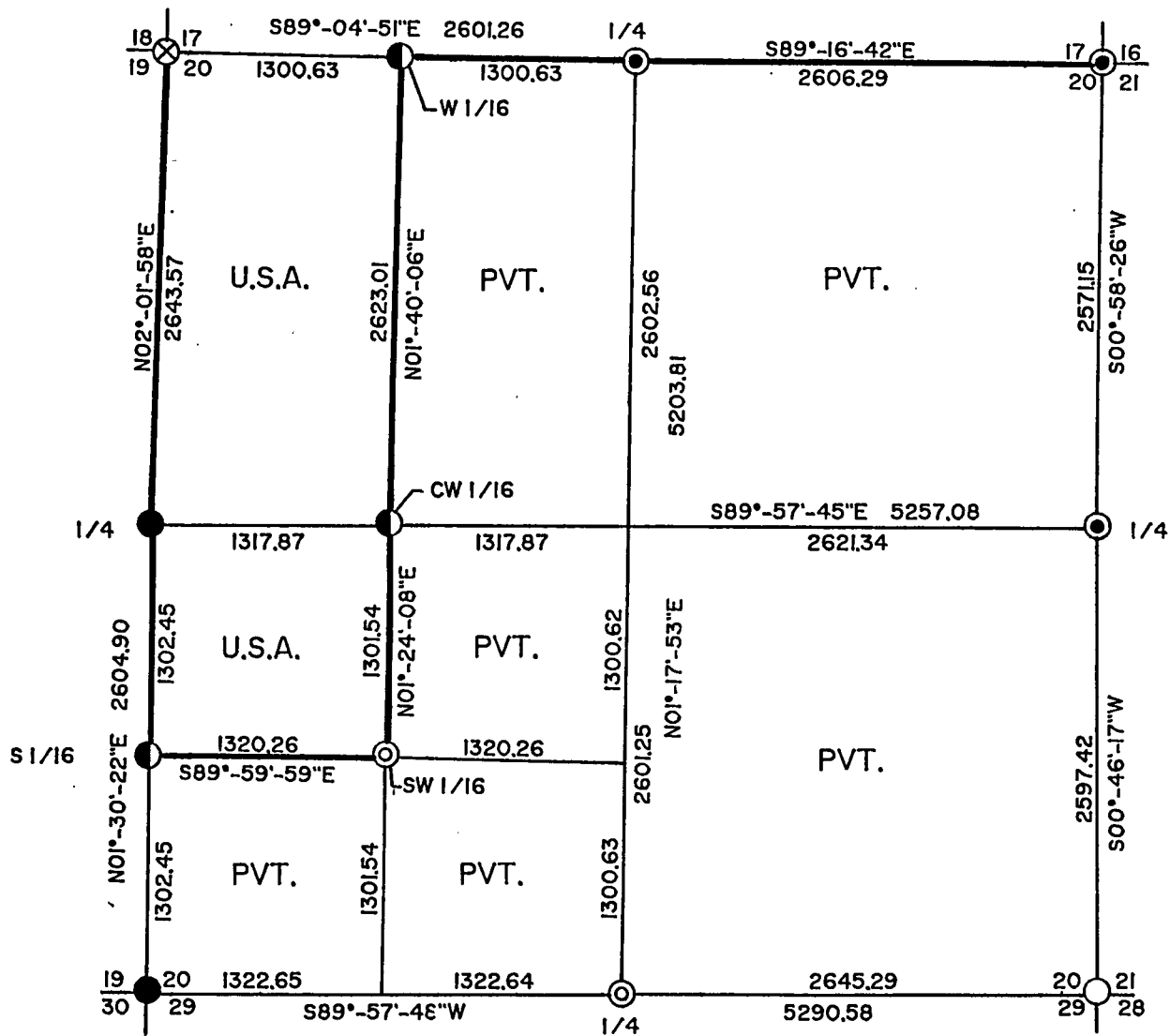
## U.S. GOVERNMENT LAND

BEING THE W 1/2 - NW 1/4 AND THE NW 1/4 - SW 1/4, SECTION 20,  
TOWNSHIP 36 NORTH, RANGE 15 EAST,  
FOURTH PRINCIPAL MERIDIAN

## FOREST COUNTY, WISCONSIN



GRAPHIC SCALE: 1" = 1000 FT.



### LEGEND

- ⊙ 2-1/2" X 36" ALUMINUM CAPPED PIPE - SET THIS SURVEY
- ⊙ 2-1/2" X 120" ALUMINUM CAPPED PIPE - SET THIS SURVEY
- 1" X 36" ALUMINUM CAPPED PIPE - SET THIS SURVEY
- ⊗ 1" X 30" PLASTIC CAPPED PIPE - SET THIS SURVEY
- FOUND ALUMINUM CAPPED PIPE
- FOUND BRASS CAPPED PIPE
- BOUNDARY LINE MARKED TO FOREST SERVICE STANDARDS

### SECTION 20, T36-R15E SURVEY NOTES

This survey was made by Coleman Engineering Company for the U.S. Department of Agriculture-Forest Service under Contract No. 53-56A6-2-00788 for the purpose of restoring and establishing corners on the perimeter of Section 20, for establishing subdivisional corners within Section 20, and for locating and marking the boundaries of U.S. Government lands along the perimeter and within Section 20, Township 36 North, Range 15 East, Fourth Principal Meridian, Forest County, State of Wisconsin.

The U.S. Government acquired ownership within Section 20 in 1938 and 1939.

The original township line and subdivision surveys of T36N-R15E were completed in 1858 and 1859, respectively.

The corner positions recovered, restored and established by this survey are marked by the monument described in the map legend.

The corner positions established were located to a minimum accuracy of 1 part in 5000.

The bearings between corner positions are true bearings as determined by solar (hour-angle) observations.

The field notes of the survey and a copy of this plat are on file in the Forest Supervisor's office in Rhinelander, Wisconsin.

### CORNERS RECOVERED OR RESTORED

1. Section corner common to Sections 17, 18, 19 and 20. Restored corner position from 1911 notes by J.J. McLendy, who had found original bearing trees.

Established corner references:

Maple	3"	N45°E	34.86 feet
Reference monument		S60°E	21.00 feet
2 1/2" x 36" aluminum pipe monument			
Maple	8"	S41°W	76.35 feet
Power Pole #3615-18PL		N83°W	28.55 feet
Steel Sign Post		S60°E	21.50 feet

2. Quarter corner common to Sections 17 and 20. Corner position recovered as a found 1 7/8" O.D. iron pipe. Position was accepted as most probable location of true corner.

Established corner references:

Sugar	8"	N54°E	29.15 feet
Sugar	9"	S44°E	10.07 feet
Ash	9"	S60°W	20.21 feet
Sugar	9"	N26°W	10.79 feet
Steel Sign Post		West	1.50 feet

3. Section corner common to Sections 16, 17, 20 and 21. Corner position recovered as a found 2" iron pipe as positioned from information received by Ken Mullens with Northern Hardwoods. Position was accepted as the most probable location of true corner.

Established corner references:

Yellow birch	7"	N41°E	12.39 feet
Sugar	5"	S77°E	17.69 feet
Yellow birch	9"	S26°E	37.07 feet
Sugar	4"	S19°W	44.75 feet
Steel Sign Post		Northwest	1.43 feet

4. Quarter corner common to Sections 20 and 21. Corner position recovered as a found 1 1/4" iron pipe. Position was accepted as the most probable location of true corner.

Established corner references:

Sugar	5"	N30°E	21.04 feet
Yellow birch	9"	S53°E	29.24 feet
Sugar	9"	S04°E	31.36 feet
Hemlock	16"	N35°W	8.55 feet
Steel Sign Post		North	1.64 feet

5. Section corner common to Sections 20, 21, 28 and 29. Corner position monumented by Jean Resvick, RLS 802. Certificate on file in Forest County - Document No. 94220.

6. Quarter corner common to Sections 20 and 29. Corner position restored by single proportional measurement between the southwest and southeast corners of Section 20.

Established corner references:

White pine	6"	N32°E	25.51 feet
Black spruce	4"	S14°E	7.50 feet
Black spruce	3"	S62°W	6.02 feet
Black spruce	3"	N54°W	22.74 feet
Steel Sign Post		S55°E	2.52 feet

7. Section corner common to Sections 19, 20, 29 and 30. Corner position monumented by Thomas Arnott, RLS 887. Certification file in Forest County - Document No. 109434.

8. Quarter corner common to Sections 19 and 20. Corner position monumented by Thomas Arnott, RLS 887. Corner certificate on file in Forest County - Document No. 109432.

Established additional references:

Sugar (existing)	8"	N58°E	27.86 feet
Maple	8"	S02°E	10.42 feet
Power Pole #3615-19E		N83°W	52.61 feet
Sugar	6"	N04°W	25.63 feet
Steel Sign Post		East	1.45 feet

### CORNERS ESTABLISHED

1. West one-sixteenth (1/16) corner common to Sections 17 and 20. Established corner position at the mid-point and on line between the north quarter corner and northwest corner of Section 20.

Established corner references:

Balsam	11"	N76°E	40.78 feet
Sugar	8"	S25°E	15.99 feet
Steel Sign Post		Southeast	1.49 feet

2. Center west sixteenth (1/16) corner of Section 20. Established the corner position at the mid-point and on line between the center of Section 20 and the west quarter corner of Section 20.

Established corner references:

Sugar	10"	N14°E	25.29 feet
Yellow birch	7"	S84°E	29.80 feet
Steel Sign Post		West	1.07 feet

3. Southwest sixteenth (SW 1/16) corner of Section 20. Established corner position at the intersection of the south and west sixteenth lines of Section 20.

Established corner references:

Black spruce	3"	S73°E	38.62 feet
Black spruce	2"	S1°W	28.16 feet
Steel Sign Post		Northwest	2.45 feet

4. South sixteenth (S 1/16) corner common to Sections 19 and 20. Established the corner position at the mid-point and on line between the southwest corner of Section 20 and the west quarter corner of Section 20.

Established corner references:

1" O.D. Iron Pipe (found)		N62°E	8.27 feet
Sugar	6"	N35°E	13.67 feet
Maple	9"	S87°E	21.57 feet
Steel Sign Post		Northeast	1.30 feet

SURVEYOR'S AFFIDAVIT

State of Wisconsin )  
County of Forest ) ss.

I, John R. Garske, Land Surveyor for Coleman Engineering Company and a registered surveyor in the State of Wisconsin, hereby certify that this survey of Section 20, Township 36 North, Range 15 East, Fourth Principal Meridian, State of Wisconsin, was performed under my direct responsible supervision.

The plat map and the notes herewith are a correct representation of the land surveyed and divided. I have surveyed and subdivided said section in accordance with the rules for survey of the public lands and with the statutes of the State of Wisconsin.

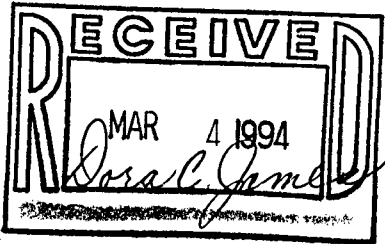


John R. Garske  
John R. Garske  
Coleman Engineering Company  
R.L.S., State of Wisconsin  
License No. S-1685

Plat ready for filing:

Sue Vap  
District Ranger

Date of Survey: 1993



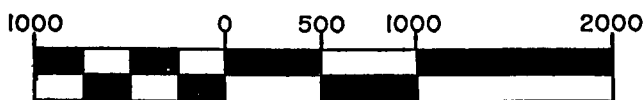
# PLAT OF SURVEY

SHEET 1 OF 4

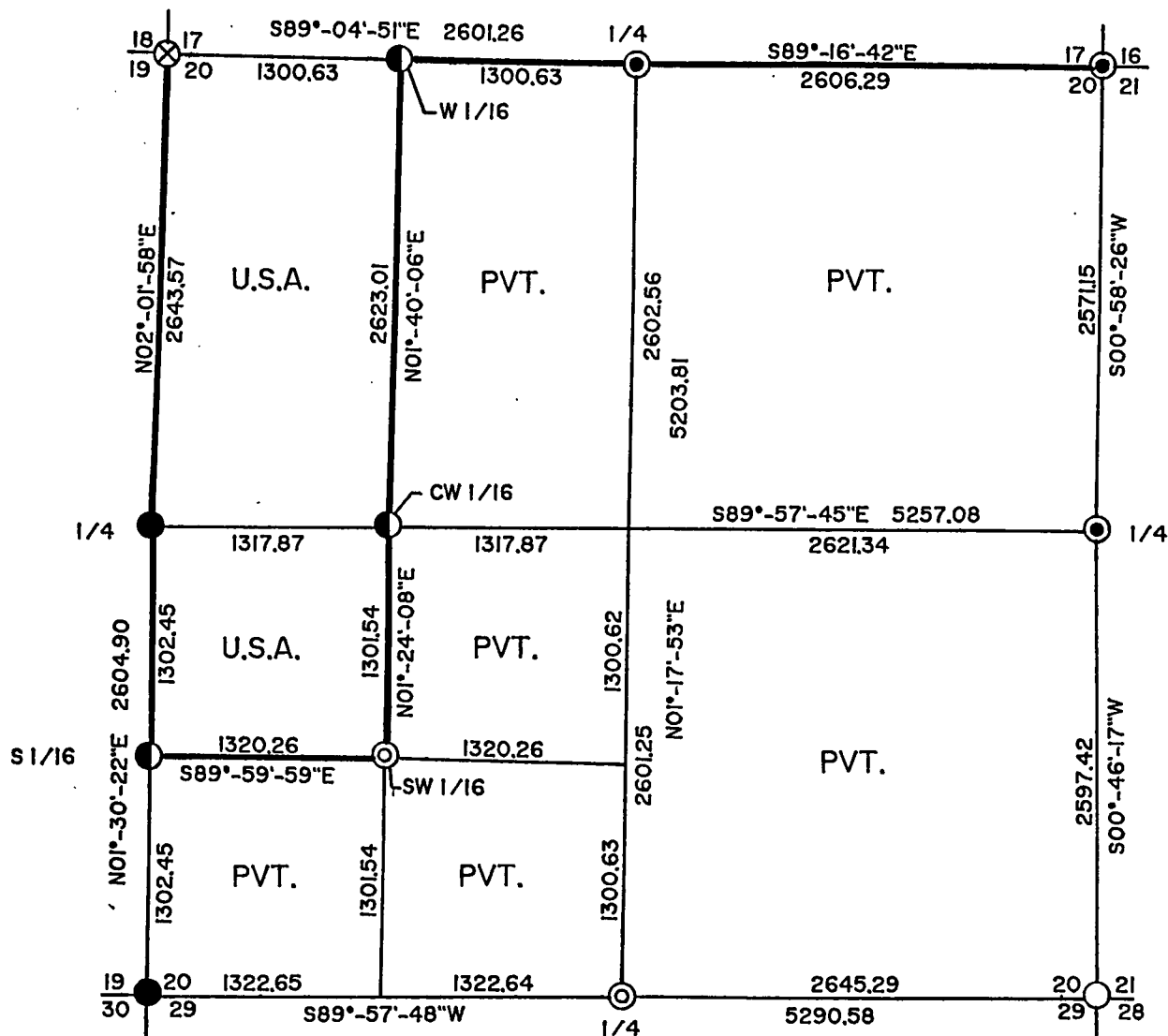
## U.S. GOVERNMENT LAND

BEING THE W 1/2 - NW 1/4 AND THE NW 1/4 - SW 1/4, SECTION 20,  
TOWNSHIP 36 NORTH, RANGE 15 EAST,  
FOURTH PRINCIPAL MERIDIAN

## FOREST COUNTY, WISCONSIN



GRAPHIC SCALE: 1" = 1000 FT.



### LEGEND

- ⊙ 2-1/2" X 36" ALUMINUM CAPPED PIPE - SET THIS SURVEY
- ⊙ 2-1/2" X 120" ALUMINUM CAPPED PIPE - SET THIS SURVEY
- 1" X 36" ALUMINUM CAPPED PIPE - SET THIS SURVEY
- ⊗ 1" X 30" PLASTIC CAPPED PIPE - SET THIS SURVEY
- FOUND ALUMINUM CAPPED PIPE
- FOUND BRASS CAPPED PIPE
- BOUNDARY LINE MARKED TO FOREST SERVICE STANDARDS