

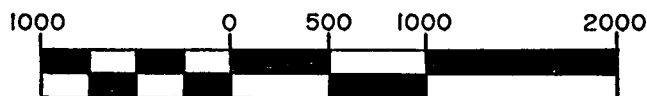
PLAT OF SURVEY

U.S. GOVERNMENT LAND

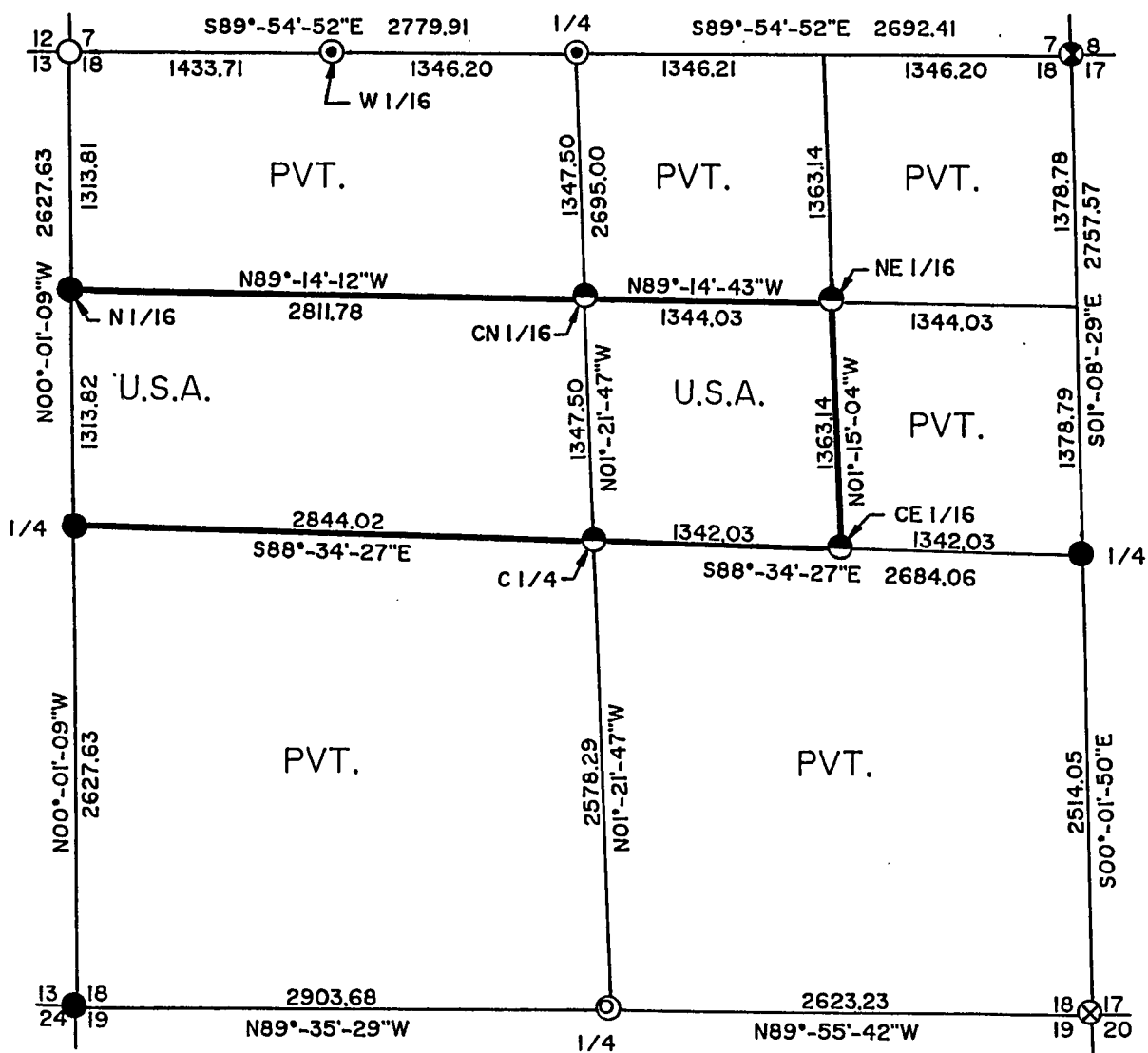
SHEET 1 OF 4

BEING THE S 1/2-NW 1/4 AND THE SW 1/4-NE 1/4, SECTION 18,
TOWNSHIP 36 NORTH, RANGE 15 EAST,
FOURTH PRINCIPAL MERIDIAN

FOREST COUNTY, WISCONSIN



GRAPHIC SCALE: 1 INCH = 1000 FEET



LEGEND

- ⊙ RAILROAD SPIKE - SET THIS SURVEY
- 1" X 60" ALUMINUM CAPPED PIPE - SET THIS SURVEY
- ⊗ 1" X 30" PLASTIC CAPPED PIPE - SET THIS SURVEY
- ⊙ 2-1/2" X 36" ALUMINUM CAPPED PIPE - SET THIS SURVEY
- ⊗ FOUND P.K. NAIL
- FOUND ALUMINUM CAPPED PIPE
- FOUND BRASS CAPPED PIPE
- BOUNDARY LINE MARKED TO FOREST SERVICE STANDARDS

SECTION 18, T36-R15E
SURVEY NOTES

This survey was made by Coleman Engineering Company for the U.S. Department of Agriculture-Forest Service under Contract No. 53-56A6-2-00788 for the purpose of restoring and establishing corners on the perimeter of Section 18, for establishing subdivisional corners within Section 18, and for locating and marking the boundaries of U.S. Government lands along the perimeter and within Section 18, Township 36 North, Range 15 East, Fourth Principal Meridian, Forest County, State of Wisconsin.

The U.S. Government acquired ownership within Section 18 in 1939.

The original township line and subdivision surveys of T36N-R15E were completed in 1857 and 1859, respectively.

The corner positions recovered, restored and established by this survey are marked by the monument described in the map legend.

The corner positions established were located to a minimum accuracy of 1 part in 5000.

The bearings between corner positions are true bearings as determined by solar (hour-angle) observations.

The field notes of the survey and a copy of this plat are on file in the Forest Supervisor's office in Rhineland, Wisconsin.

CORNERS RECOVERED OR RESTORED

1. Corner common to Sections 12 and 13, T36N, R14E and Sections 7 and 18, T36N, R15E. Corner position monumented by J.F. Resvick, 802. Certificate on file in Forest County - Document No. 95886.

2. Quarter corner common to Sections 7 and 18. Restored corner position by single proportional measurement between southeast and southwest corners of Section 7.

Established corner references:

Spruce	7"	N52°E	57.48 feet
Balsam	12"	S68°E	75.26 feet
Sugar maple	5"	S22°W	41.97 feet
Witness corner monument - 2 1/2" x 36" aluminum pipe with 3" cap stamped -			
		N03°W	33.00 feet
Steel Sign Post		N03°W	34.06 feet

3. Section corner common to Sections 7, 8, 17 and 18. Corner position monumented by J.F. Resvick, RLS 802. Certificate on file in Forest County - Document No. 118069.

Established corner references:

Basswood (13' tall-dead)			
existing	40"	N59°E	35.60 feet
1" I.D. galvanized pipe			
(new)	30" long	S40°E	35.50 feet
Sugar maple existing	19"	S43°W	58.15 feet
Red pine existing	6"	N48°W	65.18 feet

4. Quarter corner common to Sections 17 and 18. Corner position monumented by Milo Stefan, RLS 1558. Corner certificate on file in Forest County - Document No. 132700.

5. Section corner common to Sections 17, 18, 19 and 20. Restored corner position from 1911 notes by J.J. McLendy, who had found original bearing trees.

Established corner references:

Maple	3"	N45°E	34.86 feet
Reference monument		S60°E	21.00 feet
2 1/2" x 36" aluminum pipe monument			
Maple	8"	S41°W	76.35 feet
Power pole #3615-18PL		N83°W	28.55 feet
Steel Sign Post		S60°E	21.50 feet

6. Quarter corner common to Sections 18 and 19. Corner position recovered as a found 2" iron pipe. Position was accepted as most probable location of true corner.

Established corner references:

Sugar	6"	N20°E	21.05 feet
Sugar	6"	N83°E	15.39 feet
Ash	9"	S63°W	17.35 feet
Ash	9"	N40°W	4.26 feet
Steel Sign Post		Southeast	1.70 feet

7. Section corner to Sections 13 and 24, T36N, R14E and Sections 18 and 19, T36N, R15E. Corner position monumented by Thomas Arnott, RLS 887, in 1989. Certificate on file in Forest County - Document No. 136727.

8. Quarter corner common to Section 13, T36N, R14E and Section 18, T36N, R15E. Corner position monumented by Gary Pisoni, RLS 1634.

Established references:

Cedar	12"	S45°W	85.84 feet
Cedar	10"	S87°W	54.28 feet
Cedar	13"	N67°W	51.83 feet
Steel Sign Post		South	0.97 feet

9. North sixteenth corner common to Section 13, T36N, R14E and Section 18, T36N, R15E. Corner position established by Gary Pisoni, RLS 1634.

Established references:

B. spruce	7"	S77°E	16.34 feet
B. spruce	7"	N23°W	7.22 feet
Steel Sign Post		N45°E	1.0 feet

CORNERS ESTABLISHED

1. Center north sixteenth (1/16) corner of Section 18. Established the corner position at the mid-point and on line between the center of Section 18 and the north quarter corner of Section 18.

Established corner references:

Cedar	10"	N33°E	30.20 feet
Cedar	6"	S42°E	37.95 feet
Steel Sign Post		South	1.16 feet

2. Northeast sixteenth (NE 1/16) corner of Section 18. Established corner positin at the intersection of the north and east sixteenth lines of Section 18.

Established corner references:

Cedar	6"	N6°E	7.10 feet
Black spruce	9"	S25°E	13.89 feet
Steel Sign Post		Southwest	1.29 feet

3. Center east sixteenth (CE 1/16) corner of Sectin 18. Established the corner position at the mid-point and on line between the center of Section 18 and the east quarter corner of Section 18.

Established corner references:

Cedar	5"	S55°E	20.82 feet
Cedar	7"	S25°W	23.94 feet
Steel Sign Post		Northwest	1.02 feet

4. Center of Section 18. Established corner position at the intersection of the North-South and East-West one-quarter lines.

Established corner references:

Sugar	6"	N37°E	7.25 feet
Maple	10"	S58°E	20.55 feet
Maple	12"	N74°W	25.18 feet
Steel Sign Post		North	1.29 feet

SURVEYOR'S AFFIDAVIT

State of Wisconsin)
County of Forest) ss.

I, John R. Garske, Land Surveyor for Coleman Engineering Company and a registered surveyor in the State of Wisconsin, hereby certify that this survey of Section 18, Township 36 North, Range 15 East, Fourth Principal Meridian, State of Wisconsin, was performed under my direct responsible supervision.

The plat map and the notes herewith are a correct representation of the land surveyed and divided. I have surveyed and subdivided said section in accordance with the rules for survey of the public lands and with the statutes of the State of Wisconsin.



John R. Garske
John R. Garske
Coleman Engineering Company
R.L.S., State of Wisconsin
License No. S-1685

Plat ready for filing:

Sue Vap
District Ranger

Date of Survey: 1993

