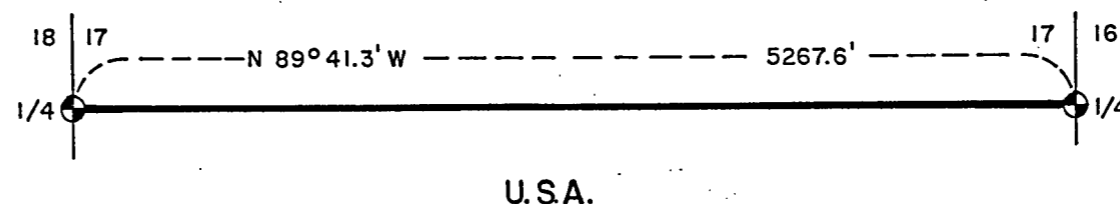
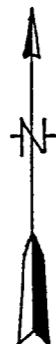
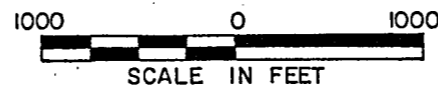


CERTIFIED LAND CORNER RESTORATION

Being the East-West Quarter Line of Section 17
 Township 36 North, Range 15 East, Fourth Principal Meridian
 FOREST COUNTY, WISCONSIN



LEGEND

⊕ 2" Aluminum Monument, 36" Long.

— U.S. Government Boundary.

Conversion Factors:
 Feet to Meters—0.304801
 Meters to Feet—3280833

FORM NO. 985-A

N.C. Miller Company
Charlotte, N.C.

Stock No. 26273

Stock No. 26273

Sheet 2 of 3

SURVEY NOTES

This survey was made by the U. S. Department of Agriculture, Forest Service, for the purpose of restoring and establishing corners on the east-west quarter line of Section 17, for establishing subdivisional corners on the east-west quarter line of Section 17, and for locating and marking the boundaries of U. S. Government lands on their perimeter and within Section 17, Township 36 North, Range 15 East, Fourth Principal Meridian, Forest County, Wisconsin.

The U. S. Government lands in this section were acquired in 1935.

The original government subdivision survey of this township was made in 1859.

The corner positions recovered, restored, and established by this survey are marked by the monument described in the map legend.

The corner positions established were located to an accuracy of one part in 3000.

The bearings between corner positions are true bearings as determined by solar observations.

The field notes of this survey and a copy of this plat are on file in the Forest Supervisor's Office at Rhinelander, Wisconsin.

CORNERS RECOVERED AND RESTORED1. Quarter Corner to Sections 16 and 17, T.36N., R.15E.

Corner position found marked by a post point with original Sugar Maple BT, S.34°E., 17 links with fence lines running north, south, and west.

Corner References:

Hemlock	18"	N.46°E.	33.74 feet
Sugar Maple	21"	S.38°E.	11.36 feet
Sugar Maple	8"	N.17°W.	53.61 feet
Steel Sign Post		South	1.00 feet

2. Quarter Corner to Sections 17 and 18, T.36N., R.15E.

Corner position restored from fence line west and centerline of "Old Highway 8" north-south, as called for on 874, dated May 19, 1936.

Corner References:

Black Spruce	4"	N.41°E.	39.97 feet
Tamarack	5"	S.43°E.	41.05 feet
Power Pole #3615-18R12		S.37°W.	53.58 feet
Witness Corner		East (on line)	30.25 feet

3. Witness Corner to Quarter Corner to Sections 17 and 18, T.36N., R.15E.

Witness corner is east on the quarter line, 30.25 feet from quarter corner.

Corner References:

Tamarack	6"	N.37°E.	11.14 feet
Black Spruce	4"	S.35°E.	15.93 feet
Steel Sign Post		West	1.90 feet

Stock No. 26273

Sheet 3 of 3

SURVEYOR'S AFFIDAVIT

State of Wisconsin SS
County of Forest

I, Milo E. Stefan, Cadastral Surveyor, U. S. Forest Service, and a registered surveyor in the State of Wisconsin, hereby certify that I have surveyed the east-west quarter line of Section 17, Township 36 North, Range 15 East, Fourth Principal Meridian, State of Wisconsin.

The plat map and the notes herewith are a correct representation of the land surveyed and divided. I have surveyed said section in accordance with the rules for survey of the public lands and with the statutes of the State of Wisconsin.



Milo E. Stefan
Cadastral Surveyor, U. S. Forest Service
R.L.S., State of Wisconsin
Certificate S-1558

Plat ready for filing.

Dale S. Haeg
District Ranger

Date of Survey: 1982

