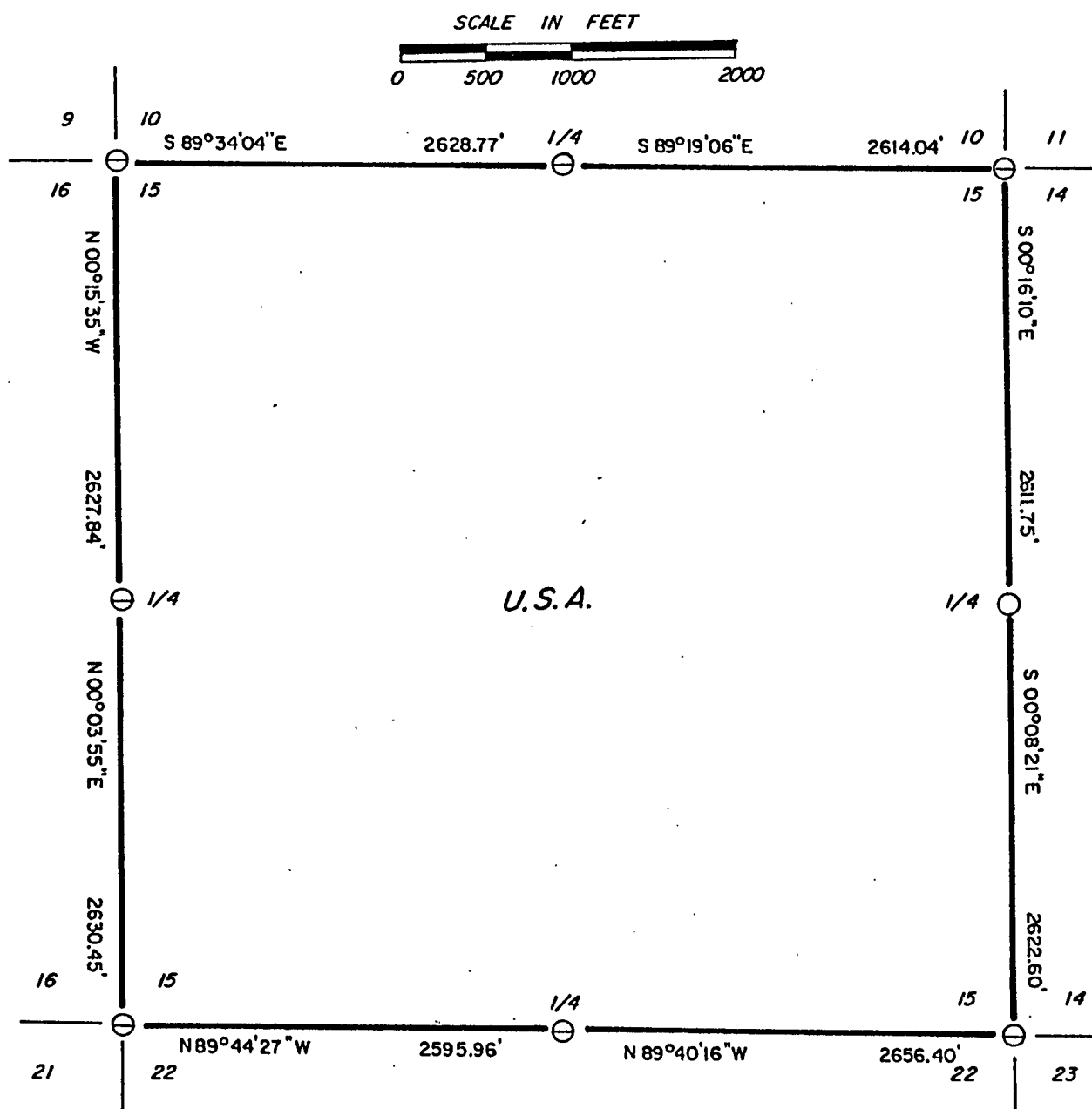


Copy

SHEET 1 OF 3

PLAT OF SURVEY U.S. GOVERNMENT LANDS

Being all of Section 15, Township 36 North, Range 15 East,
4th Principal Meridian, Forest County Wisconsin



LEGEND

⊖ 2½" DIAMETER ALUMINUM MONUMENT FOUND, WITH CAP STAMPED FOR CORNER

○ SET 2½" DIAMETER ALUMINUM MONUMENT, 36" LONG WITH STAMPED CAP

— MARKED BOUNDARY LINES OF U.S. GOVERNMENT LANDS



Stock No. 26273

Sheet two of three

SURVEY NOTES

This survey was made by AARON ASSOCIATES of Oconto Falls, Wisconsin, under contract with the U.S. Department of Agriculture, Forest Service for the purpose of recovering and restoring corners of the Public Land Survey along the perimeter of Section 15, and for locating and marking the boundary lines of U.S. Government Lands on the perimeter of Section 15, Township 36 North, Range 15 East, 4th Principal Meridian, Forest County, Wisconsin.

The U.S. Government lands in Section 15 were acquired in 1935.

The original survey of this township was made in 1859.

The corner positions recovered and restored by this survey are marked with monuments as described in the Legend on the face of this Plat Map.

The corner positions recovered and restored by this survey were located to an accuracy of better than one part in 5000.

The bearings between corner positions are True bearings as determined from solar observations.

The field notes of this survey and a copy of the Plat Map are on file in the Forest Supervisor's Office at Rhinelander, Wisconsin.

CORNERS RECOVERED AND RESTORED

- 1) Section Corner to Sections 9-10-15-16, T36N, R15E.

This corner position was found marked with an aluminum monument set by the U.S. Forest Service survey crew under Milo Stefan. Corner certificate on file.

- 2) Section Corner to Sections 10-11-14-15, T36N, R15E.

This corner position was found marked with an aluminum monument set by the U.S. Forest Service survey crew under William Cochrane. Corner certificate on file.

- 3) Section Corner to Sections 14-15-22-23, T36N, R15E.

This corner position was found marked with an aluminum monument set by the U.S. Forest Service survey crew under William Cochrane. Corner certificate on file.

- 4) Section Corner to Sections 15-16-21-22, T36N, R15E.

This corner position was found marked with an aluminum monument set by the U.S. Forest Service survey crew under William Cochrane. Corner certificate on file.

- 5) Quarter Corner to Sections 15-16, T36N, R15E.

This corner position was found marked with an aluminum monument set by the U.S. Forest Service survey crew under William Cochrane. Corner certificate on file.



Stock No. 26273

Sheet three of three

6) Quarter Corner to Sections 10-15, T36N, R15E.

This corner position was found marked with an aluminum monument set by the US Forest Service survey crew under William Cochran. Corner certificate on file.

7) Quarter Corner to Sections 14-15, T36N, R15E.

This corner position was found marked with an iron pipe in a mound of stones. A blazed 14" Maple was found bearing S 09°E for 11 feet which fit the CCC notes of Engblom in 1935, who found a wood post and scribed Birch set by J Melendy in 1914 from original BT evidence recovered at the site. The iron pipe was accepted and replaced with an aluminum post. Corner references:

Hemlock	11"	N 55°E	18.33 ft.
Maple	13"	S 08°E	10.81 ft.
Yellow Birch	16"	S 58°W	13.12 ft.
Maple (double)	8"	N 69°W	31.63 ft.
Steel sign post		South	1.6 ft.

8) Quarter Corner to Sections 15-22, T36N, R15E.

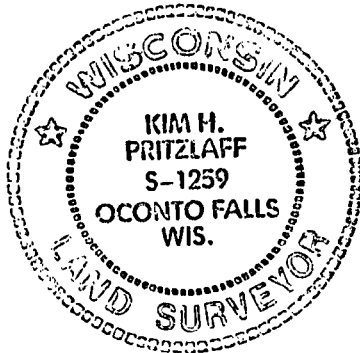
This corner position was found marked with an aluminum monument set by the US Forest Service survey crew under William Cochran. Corner certificate on file.

SURVEYOR'S AFFIDAVIT

STATE OF WISCONSIN)
 OCONTO COUNTY)SS

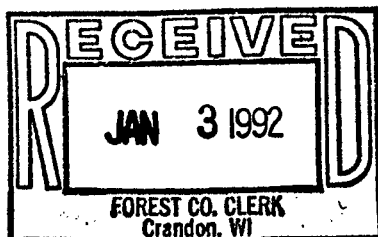
I, Kim H Pritzlaff, Registered Land Surveyor in the State of Wisconsin, hereby certify: that I have surveyed Section 15, Township 36 North, Range 15 East, 4th Principal Meridian, Forest County, Wisconsin.

That the field notes and Plat Map herewith are a true and correct representation of the lands surveyed; That I have surveyed Section 15 in accordance with the rule of survey of the Public Lands and with the Statutes of the State of Wisconsin.



Kim H Pritzlaff, RLS No. 1259
 AARON ASSOCIATES
 Oconto Falls, Wisconsin

Date of Survey: 1991



Plat Ready for Filing:

 District Ranger

Susan J. Miller
 Deputy County Clerk