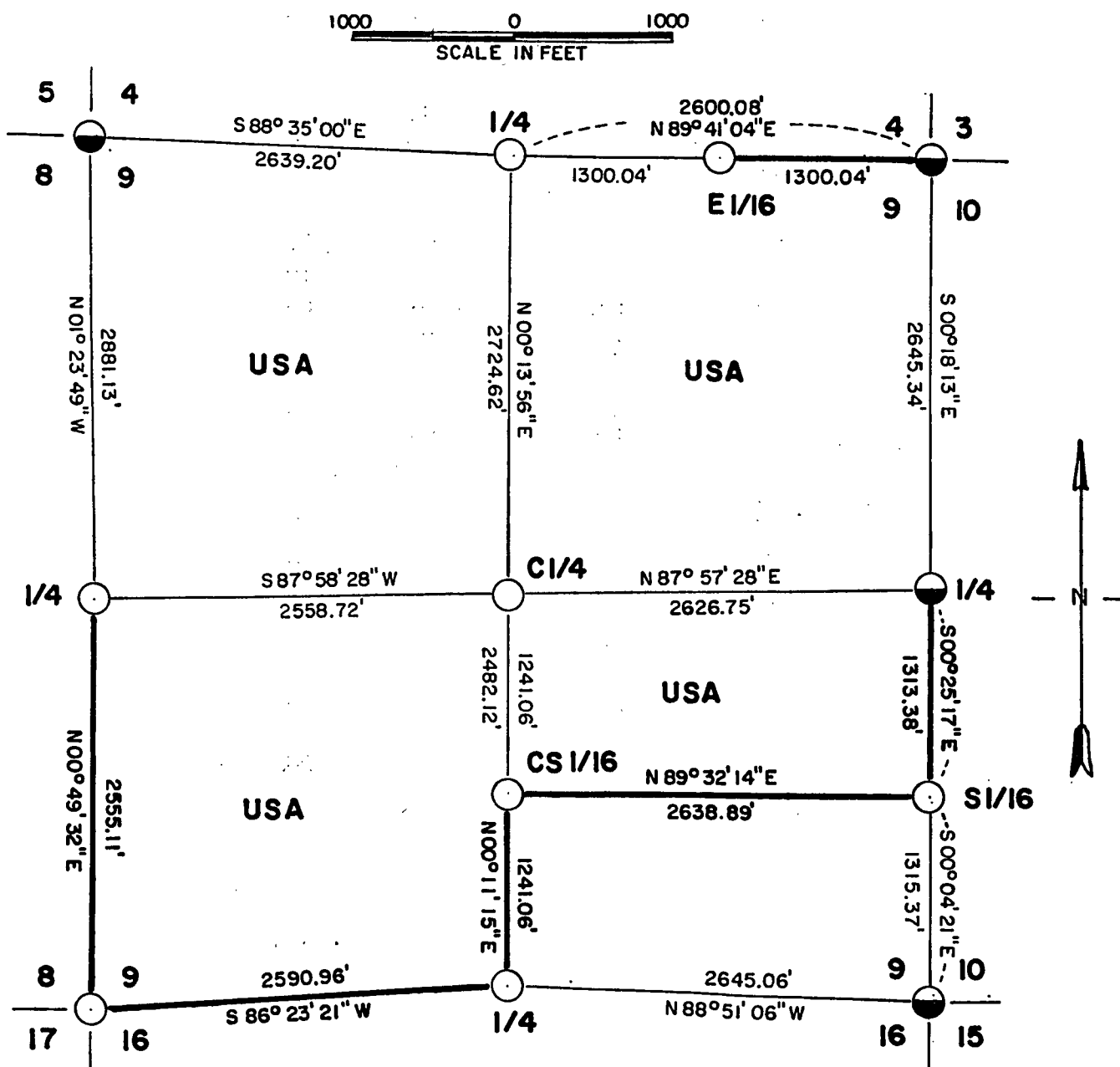


PLAT OF SURVEY U.S. GOVERNMENT LAND

Being NW1/4 , NE1/4 , SW1/4 and N1/2 - SE 1/4
all in Section 9
Township 36 North , Range 15 East , Fourth Principal Meridian
FOREST COUNTY , WISCONSIN.



2" Diameter Aluminum monument, with cap stamped for corner

○ 2" Diameter Aluminum monument, 30" long

— Marked Boundary Lines of the US Government lands

CONVERSION FACTOR:

Feet to Meters = 0.304801

Meters to Feet = 3.280833

Stock No. 26273

Sheet two of five

SURVEY NOTES

This survey was made by AARON ASSOCIATES of Oconto Falls, Wisconsin under contract with the USDA, Forest Service for the purpose of restoring and establishing corners on the perimeter of Section 9, for establishing subdivisional corners within Section 9, and for locating and marking the boundaries of US Government lands on their perimeter and within Section 9, Township 36 North, Range 15 East, Fourth Principal Meridian, Forest County, Wisconsin.

The US Government lands were acquired in the mid 1930s.

The original government survey of this township was made in 1865.

The corner positions recovered, restored and established by this survey are marked by monuments described in the map legend.

The corner positions established were located to an accuracy of one part in 10,000.

The bearings between corner positions are true bearings as determined by solar observation.

The field notes of this survey and a copy of the Plat map are on file in the Forest Supervisor's Office at Rhinelander, Wisconsin.

CORNERS RECOVERED AND RESTORED1. Section corner to Sections 8-9-16-17, T36N, R15E.

In 1911, J. Melendy, surveyor, reset a Hemlock stake at this corner position from the original bearing trees. He set two new bearing tree accessories: 24" Pine stump bearing S 29-3/4° E 33 feet and a 40" Pine stump bearing S 62 1/2° W for 39.2 feet. These two Pine stumps were recovered and the corner reset from these stumps.

Corner references:

Hemlock	7"	N 32 E	29.80'
Hemlock	9"	N 62 E	30.60'
Hemlock	9"	S 50 E	25.40'
Hemlock	13"	S 12 W	48.12'
Steel Sign Post		North	8.30'

2. Section corner to Sections 4-5-8-9, T36N, R15E.

Located a 2" diameter aluminum monument with cap stamped for corner set by Milo Stefan, RLS, in 1984. Certificate on file.

Corner references:

Sugar Maple	8"	S 73 E	16.97'
Sugar Maple	5"	S 69 W	32.30'
Spruce	6"	S 22 E	30.07'
Spruce	6"	S 39 W	9.14'
Steel Sign Post		West	1.30'

3. Sections corner to Sections 3-4-9-10, T36N, R15E.

Located a 2" diameter aluminum monument with cap stamped for corner set by Milo Stefan, RLS, in 1984. Certificate on file.

Corner references:

Cedar	8"	N 11 E	48.71'
Cedar	10"	S 29 E	60.29'
Hemlock	10"	S 07 W	68.26'
Black Spruce	9"	N 72 W	62.98'
Steel Sign Post		North	1.60'

Stock No. 26273

Sheet three of five

4. Section corner to Sections 9-10-15-16., T36N, R15E.

Located a 2" diameter aluminum monument with cap stamped for corner set by Milo Stefan, RLS in 1984. Certificate on file.

Corner references:

Tamarack	5"	N 63 E	33.04'
Tamarack	6"	S 62 E	34.24'
Tamarack	6"	S 71 W	20.46'
Tamarack	5"	N 27 W	18.98'
Steel Sign Post		South	1.50'

5. Quarter corner to Sections 9-16, T36N, R15E.

In 1911, J. Melendy, surveyor, found the old survey post and both bearing trees of the government survey still living and plainly marked. He set a 4"x4" cedar post with new BTs of Maple 12" bearing N 28½W for 21 lks and a Hemlock 14" bearing S 43 W for 32 5/8 lks. Located Melendy's post and both of his bearing trees and set corner from same. The bearing trees were both stumps at ground surface.

Corner references:

Red Maple	5"	N 59 E	16.92'
Sugar Maple	6"	S 22 E	29.96'
Red Maple (2)	8"	N 29 W	14.28'
Steel Sign Post		West	0.80'

6. Quarter corner to Sections 8-9, T36N, R15E.

In 1911, J. Melendy also found the wood post at this corner location with the original Birch S 45 E 12 links still living and the other Birch BT then a stump. He set a 5" cedar post with the following BTs: 14" Hemlock bearing N 79°10'E for 39 5/8 lks and a 14" Spruce bearing N 55½W for 24 3/4 links. Located Melendy's post hole along with the bearing trees Melendy marked, both of which are now stumps at ground level. The original Birch bearing tree N 43 E 12 lks was also found as a ground level stump. Reset corner from this evidence.

Corner references:

Red Maple(2)	5"	N 04 W	42.00'
Spruce	5"	N 55 W	9.60'
Red Maple	6"	S 80 W	19.45'
Steel Sign Post		South	1.30'

7. Quarter corner to Sections 4-9, T36N, R15E.

In 1911, J Melendy found the original post with the Birch bearing tree S 04 W 43 lks still standing and the Hemlock BT N 04 E blown down. He set a 5" cedar post with a Pine stump bearing N 38½E for 53½ lks, the stump was 30". The other BT was a Hemlock 18" bearing S 71 W 27 5/8 lks. Located Melendy's 30" Pine stump still standing, and at 53½ lks S 38½W located a 5" post point and other guard stakes. Reset corner from this evidence.

Corner references:

Spruce	10"	S 78 W	29.40'
White Birch	6"	N 33 E	38.32'
Spruce	4"	East	36.50'
Steel Sign Post		North	1.70'

Stock No. 26273

Sheet four of five

8. Quarter corner to Sections 9-10, T36N, R15E.

Located a 2" aluminum monument with cap stamped for corner set by Milo Stefan, RLS. Certificate on file. Melendy also found this corner and tied into a 4'x4' boulder S 43 3/4° W 29 links. Boulder found and fits Stefans corner. Certificate on file.

Corner references:

Red Pine	12"	N 39 E	24.08'
White Spruce	10"	S 60 W	11.73'
Red Pine	12"	N 37 W	27.74'
Steel Sign Post		South	1.40'

CORNERS ESTABLISHED9. Center quarter corner of Section 9, T36N, R15E.

Computed the straight line intersection point of the north-south and east-west quarter lines of Section 9 and within one foot of this position we found Melendy's post hole from his 1911 survey. N 2 1/2° E 14 1/3 lks Melendy's 18" Hemlock was found, now a stump at ground level. I monumented the post hole.

Corner references:

Spruce	7"	N 17 W	10.93'
Spruce	8"	S 12 E	18.03'
Spruce	8"	S 65 W	11.67'
Steel Sign Post		North	0.70'

10. East sixteenth corner between Sections 4-9, T36N, R15E.

Set this corner at midpoint between the north quarter and northeast corners of Section 9. Before setting this position we searched for Melendy's corner and bearing trees and found a living White Birch growing from a Birch stump bearing S 41 1/2° E 8.75' from our corner position which Melendy used as a BT for this corner. Post and other BT was not found.

Corner references:

Sugar Maple	5"	N 25 W	19.08'
Sugar Maple	10"	N 64 E	18.52'
Red Maple	5"	S 46 W	24.33'
Steel Sign Post		East	1.60'

11. South sixteenth corner between Sections 9-10, T36N, R15E.

Located a 1 1/4" iron pipe in rock cairn which fell within 4 feet of true position set by J Melendy in his 1911 survey. The iron pipe was driven in an old post point Melendy set. I monumented the iron pipe position.

Corner references:

Sugar Maple	4"	N 38 W	16.73'
Sugar Maple	6"	N 86 E	39.64'
Sugar Maple	5"	S 41 E	21.38'
Steel Sign Post		West	1.80'

Stock No. 26273

Sheet five of five

12. Center south sixteenth corner of Section 9, T36N, R15E.

Set this corner at midpoint between the south and center quarter corners of said Section 9. Melendy's corner position was lost, but a plantation post was found within 2 feet of this computed position. The plantation posts in this section came very close if not right on the corner positions Melendy set.

Corner references:

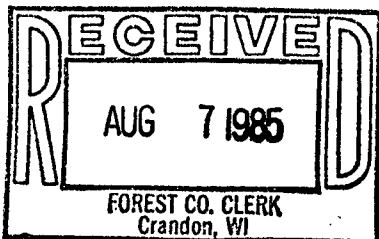
Spruce	6"	N 01 E	16.77'
Spruce	5"	S 86 W	7.27'
Cedar with tag	15"	S 30 W	34.90'
Steel Sign Post		South	1.90'

SURVEYOR'S AFFIDAVIT

STATE OF WISCONSIN)
 OCONTO COUNTY)SS

I, Kim H Pritzlaff, Registered Land Surveyor in the State of Wisconsin, hereby certify: that I have surveyed Section 9, Township 36 North, Range 15 East, Fourth Principal Meridian, Forest County, Wisconsin.

The Plat maps and notes herewith are a true and correct representation of the land surveyed and divided. I have surveyed and subdivided said section in accordance with the rules of survey of the public lands and with the Statutes of the State of Wisconsin.



Dora C. James
 Forest Co. Clerk

Kim H Pritzlaff

Kim H Pritzlaff, RLS No. 1259
 AARON ASSOCIATES
 Oconto Falls, Wisconsin

Date of survey: 1985



Plat is ready for filing.

Dale B. Stoege
 District Ranger