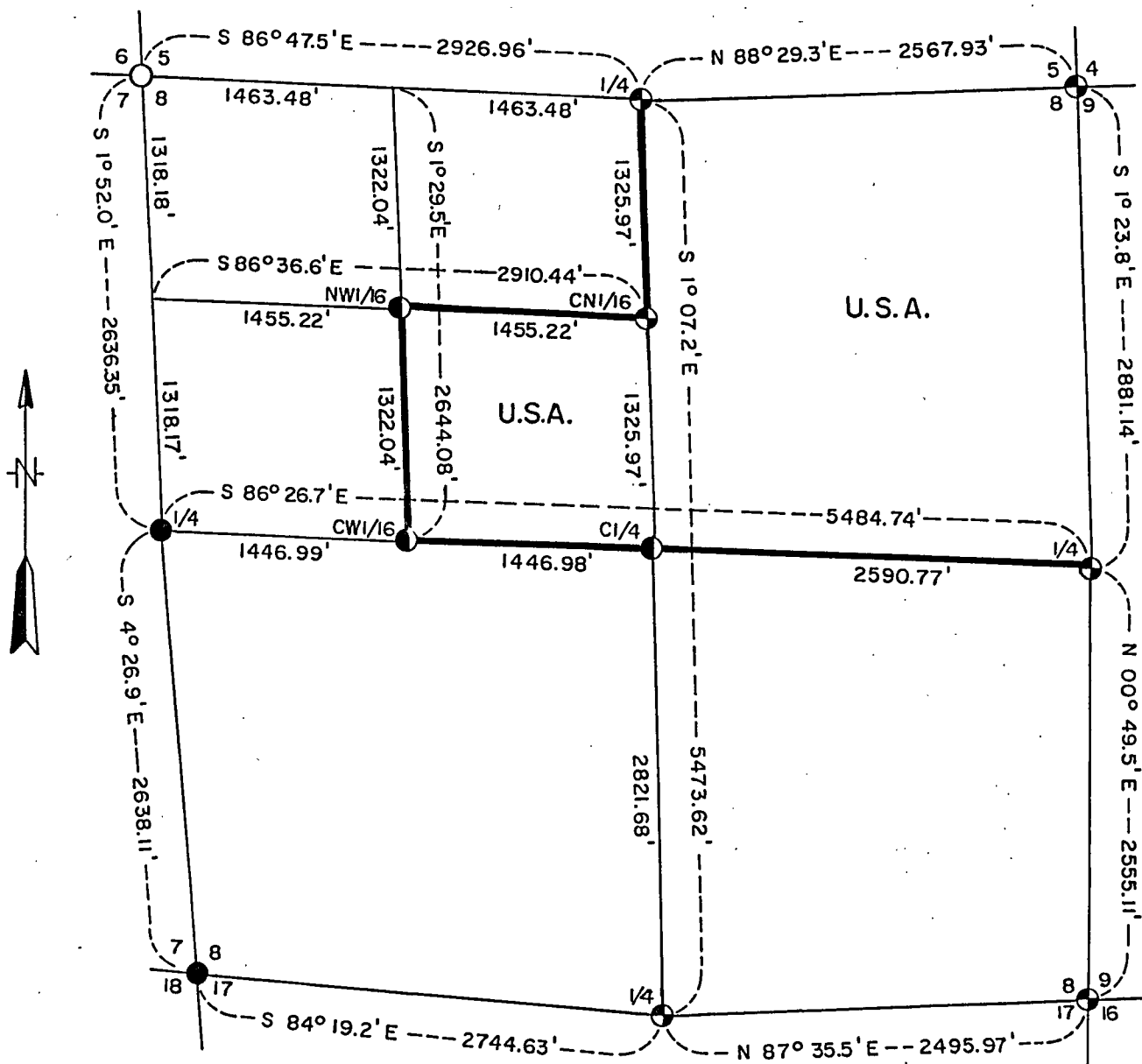
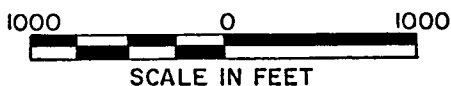


PLAT OF SURVEY U.S. GOVERNMENT LAND

Being the NE1/4 and SE1/4, NW1/4 of Section 8
Township 36 North, Range 15 East, Fourth Principal Meridian
FOREST COUNTY, WISCONSIN



LEGEND

- ⊕ 2 1/2" Aluminum Monument, 36" Long
- 2 1/2" Aluminum Monument, 60" Long.
- Brass Capped Iron Monument Below Road Surface
- 1 1/2" Iron Pipe Below Road Surface
- Marked Boundary Lines, U.S. Government Lands

Conversion Factors:
Feet to Meters - 3.280833
Meters to Feet - 0.304801

Stock No. 26273

Sheet 2 of 4

SURVEY NOTES

This survey was made by the U. S. Department of Agriculture, Forest Service, for the purpose of restoring and establishing corners on the perimeter of Section 8, for establishing subdivisional corners within Section 8, and for locating and marking the boundaries of U. S. Government land on their perimeter and within Section 8, Township 36 North, Range 15 East, Fourth Principal Meridian, Forest County, Wisconsin.

The U. S. Government lands in this section were acquired in 1936 and 1938.

The original Government subdivision survey of this township was made in 1859.

The corner positions recovered, restored, and established by this survey are marked by the monument described in the map legend.

The corner positions established were located to an accuracy of one part in 3000.

The bearings between corner positions are true bearings as determined by solar observations.

The field notes of this survey and a copy of this plat are on file in the Forest Supervisor's Office at Rhinelander, Wisconsin.

CORNERS RECOVERED AND RESTORED

1. Corner to Sections 5, 6, 7, and 8, T.36N., R.15E.
Corner monumented by Thomas Arnott, R.L.S. Certificate on file in Forest County, Document Number 109431.
2. Corner to Sections 4, 5, 8, and 9, T.36N., R.15E.
Corner monumented by Milo Stefan, R.L.S. Certificate on file in Forest County, Document Number 129822.
3. Corner to Sections 8, 9, 16, and 17, T.36N., R.15E.
Corner monumented by Kim Pritzlaff, R.L.S. Certificate on file in Forest County, Document Number 128592.
4. Corner to Sections 7, 8, 17, and 18, T.36N., R.15E.
Corner monumented by Jean Resvick, R.L.S. Certificate on file in Forest County, Document Number 118068.
5. Quarter Corner to Sections 8 and 9, T.36N., R.15E.
Corner monumented by Kim Pritzlaff, R.L.S. Certificate on file in Forest County, Document Number 128593.
6. Quarter Corner to Sections 8 and 17, T.36N., R.15E.
Corner monumented by Milo Stefan, R.L.S. Certificate on file in Forest County, Document Number 129821.
7. Quarter Corner to Sections 7 and 8, T.36N., R.15E.
Corner monumented by Jean Resvick, R.L.S. Certificate on file in Forest County, Document Number 118068.

Stock No. 26273

Sheet 3 of 4

8. Quarter Corner to Sections 5 and 8, T.36N., R.15E.

Corner monumented by Milo Stefan, R.L.S., by retracement of J. Melendey's survey in Section 5.

Corner References:

Power Pole #3615-5R1		N.13°E.	31.24 feet
Sugar	8"	N.48°E.	77.58 feet
Sugar	9"	S.37°E.	62.97 feet
Steel Sign Post		South	13.70 feet

CORNERS ESTABLISHED1. Center Quarter Corner to Section 8.

Corner established at the intersection of the one-quarter lines of Section 8.

Corner References:

Tamarack	7"	S.40°E.	17.12 feet
Tamarack	4"	S.62°W.	17.54 feet
Tamarack	5"	N.64°W.	50.86 feet
Steel Sign Post		West	1.20 feet

2. Center West One-Sixteenth Corner to Section 8.

Corner established midpoint and on line between the center quarter and west quarter corners to Section 8.

Corner References:

Tamarack	5"	S.16°E.	27.35 feet
Tamarack	6"	S.54°W.	8.05 feet
Tamarack	4"	N.52°W.	27.60 feet
Tamarack	4"	N.9°W.	50.58 feet
Steel Sign Post		East	0.94 feet

3. Center North One-Sixteenth Corner to Section 8.

Corner established midpoint and on line between the center quarter and north quarter corners to Section 8.

Corner References:

Sugar	6"	S.19°W.	73.91 feet
Steel Sign Post		North	2.25 feet
Steel Sign Post		West	1.25 feet

4. Northwest One-Sixteenth Corner to Section 8.

Corner established at the intersection of the north and west one-sixteenth lines to Section 8.

Corner References:

White Birch	10"	N.9°E.	19.78 feet
Red Maple	9"	S.72°W.	28.31 feet
Hemlock	7"	N.26°W.	51.02 feet
Steel Sign Post		East	1.15 feet

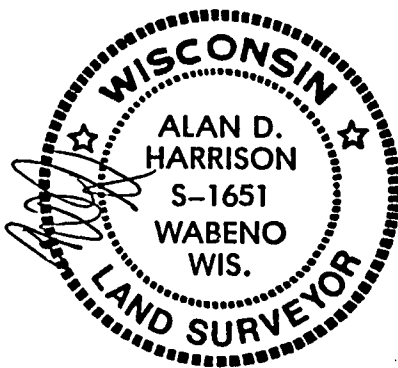
Stock No. 26273

Sheet 4 of 4

SURVEYOR'S AFFIDAVITState of Wisconsin
County of Forest SS

I, Alan D. Harrison, Cadastral Surveyor, USDA, Forest Service, and a registered surveyor in the State of Wisconsin, hereby certify that I have surveyed and subdivided Section 8, Township 36 North, Range 15 East, Fourth Principal Meridian, State of Wisconsin.

The plat map and the notes herewith are a correct representation of the land surveyed and divided. I have surveyed and subdivided said section in accordance with the rules for survey of the public lands and with the statutes of the State of Wisconsin.



Cadastral Surveyor, USDA, Forest Service
R.L.S., State of Wisconsin
Certificate S-1651

Plat Ready For Filing:

District Ranger

Date of Survey: 1986

