

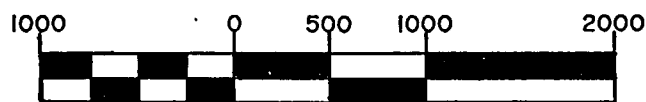
PLAT OF SURVEY

SHEET 1 OF 4

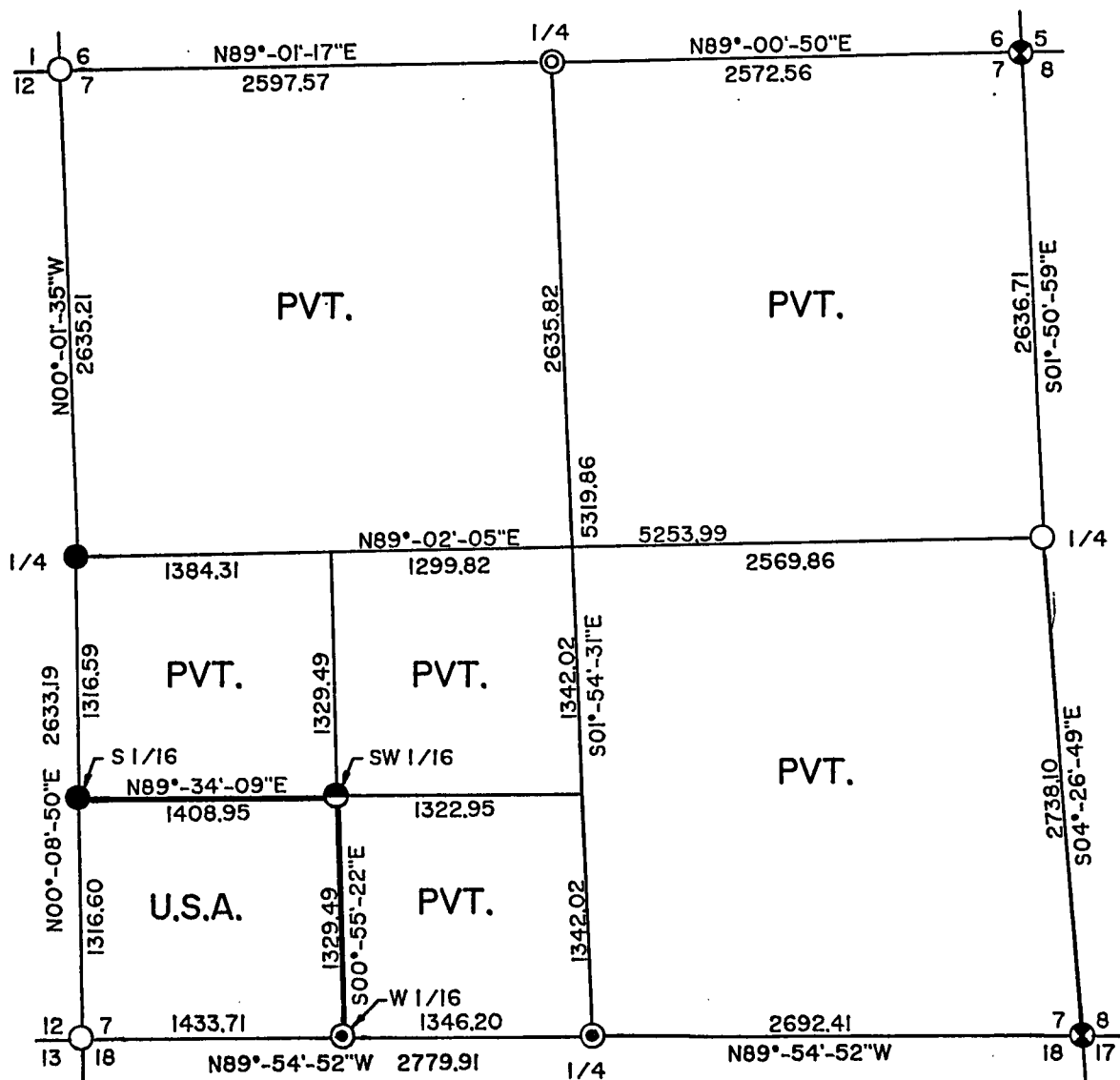
U.S. GOVERNMENT LAND

BEING THE SW 1/4-SW 1/4, SECTION 7,
TOWNSHIP 36 NORTH, RANGE 15 EAST,
FOURTH PRINCIPAL MERIDIAN

FOREST COUNTY, WISCONSIN



GRAPHIC SCALE: 1 INCH = 1000 FT.



LEGEND

- ⊙ RAILROAD SPIKE - SET THIS SURVEY
- 1" X 60" ALUMINUM CAPPED PIPE - SET THIS SURVEY
- FOUND BRASS CAPPED PIPE
- FOUND ALUMINUM CAPPED PIPE
- ⊗ FOUND P.K. NAIL
- ⊙ FOUND 1" PIPE
- BOUNDARY LINE MARKED TO FOREST SERVICE STANDARDS

SECTION 7, T36N-R15E
SURVEY NOTES

This survey was made by Coleman Engineering Company for the U.S. Department of Agriculture-Forest Service under Contract No. 53-56A6-2-00788 for the purpose of restoring and establishing corners on the perimeter of Section 7, for establishing subdivisional corners within Section 7, and for locating and marking the boundaries of U.S. Government lands along the perimeter and within Section 7, Township 36 North, Range 15 East, Fourth Principal Meridian, Forest County, State of Wisconsin.

The U.S. Government acquired ownership within Section 7 in 1939.

The original township line and subdivision surveys of T36N-R15E were completed in September 1858 and July 1859, respectively.

The corner positions recovered, restored and established by this survey are marked by the monument described in the map legend.

The corner positions established were located to a minimum accuracy of 1 part in 5000.

The bearings between corner positions are true bearings as determined by solar (hour-angle) observations.

The field notes of the survey and a copy of this plat are on file in the Forest Supervisor's office in Rhinelander, Wisconsin.

CORNERS RECOVERED OR RESTORED

1. Section corner common to Sections 1 and 12, T36N, R14E and Sections 6 and 7, T36N, R15E. Corner position monumented by Jean Resvick, RLS 802. Certificate on file in Forest County - Document No. 94219.
2. Quarter corner common to Sections 6 and 7. Corner position monumented by M.E. Stefan, RLS 1558. Certificate on file in Forest County - Document No. 132214.
3. Section corner common to Sections 5, 6, 7 and 8. Corner position monumented by Thomas Amott, RLS 887, in 1976. Certificate on file in Forest County - Document No. 109431.
4. Quarter corner common to Sections 7 and 8. Corner position monumented by Jean Resvick, RLS 802. Certificate on file in Forest County Court House - Document No. 118068.
5. Section corner common to Sections 7, 8, 17 and 18. Corner position monumented by J.F. Resvick, RLS 802. Certificate on file in Forest County - Document No. 118069.

Established additional corner references:

Basswood (13' tall-dead)			
existing	40"	N59°E	35.60 feet
1" I.D. galvanized pipe (new)	30" long	S40°E	35.50 feet
Sugar maple existing	19"	S43°W	58.15 feet
Red pine existing	6"	N48°W	65.18 feet

6. Quarter corner common to Sections 7 and 18. Restored corner position by single proportional measurement between southeast and southwest corners of Section 7.

Established corner references:

Spruce	7"	N52°E	57.48 feet
Balsam	12"	S68°E	75.26 feet
Sugar maple	5"	S22°W	41.97 feet
Witness corner monument - 2 1/2" x 36" aluminum pipe with 3" cap stamped -			
		N03°W	33.00 feet
Steel Sign Post		N03°W	34.06 feet

7. Corner common to Sections 12 and 13, T36N, R14E and Sections 7 and 18, T36N, R15E. Corner position monumented by J.F. Resvick, RLS 802. Certificate on file in Forest County - Document No. 95886.

Additional References:

Tamarack	4"	N63°E	17.66 feet
Tamarack	4"	S69°E	29.48 feet
Tamarack	3"	S86°W	13.94 feet
Tamarack	5"	N11°W	13.99 feet
Steel Sign Post		S55°W	1.2 feet

8. Quarter corner common to Sections 7, T36N, R15E and Section 12, T36N, R14E. Corner position monumented by Milo Stefan, RLS 1558. Certificate on file in Forest County - Document No. 119866.

9. South sixteenth (1/16) corner common to Sections 7 and 12. Recovered corner position monumented by Gary Pisoni, RLS No. 1634.

Established corner references:

W. spruce	8"	S79°W	17.62 feet
W. spruce	8"	N22°W	23.37 feet
Steel Sign Post		South	0.75 feet

CORNERS ESTABLISHED

1. Southwest sixteenth (1/16) corner of Section 7. Established corner position at the intersection of the south and west 1/16 lines of Section 7.

Established corner references:

Cedar	10"	N43°E	8.33 feet
Cedar	12"	S46°E	24.37 feet
Cedar	6"	S28°W	25.95 feet
Steel Sign Post		S88°W	1.80 feet

2. West sixteenth (1/16) corner common to Sections 7 and 18. Established corner position at the midpoint of a straight line between the southwest corner and the south quarter corner of Section 7.

Established corner references:

Balsam	8"	S66°E	52.83 feet
Maple	10"	S09°E	33.97 feet
Witness Corner		N02°W	33.00 feet
1" x 36" aluminum pipe monument w/stamped tablet			
Steel Sign Post		N02°W	34.01 feet

SURVEYOR'S AFFIDAVIT

State of Wisconsin)
County of Forest) ss.

I, John R. Garske, Land Surveyor for Coleman Engineering Company and a registered surveyor in the State of Wisconsin, hereby certify that this survey of Section 7, Township 36 North, Range 15 East, Fourth Principal Meridian, State of Wisconsin, was performed under my direct responsible supervision.

The plat map and the notes herewith are a correct representation of the land surveyed and divided. I have surveyed and subdivided said section in accordance with the rules for survey of the public lands and with the statutes of the State of Wisconsin.



John R. Garske
John R. Garske
Coleman Engineering Company
R.L.S., State of Wisconsin
License No. S-1685

Plat ready for filing:

Sue Vap
District Ranger

Date of Survey: 1993

