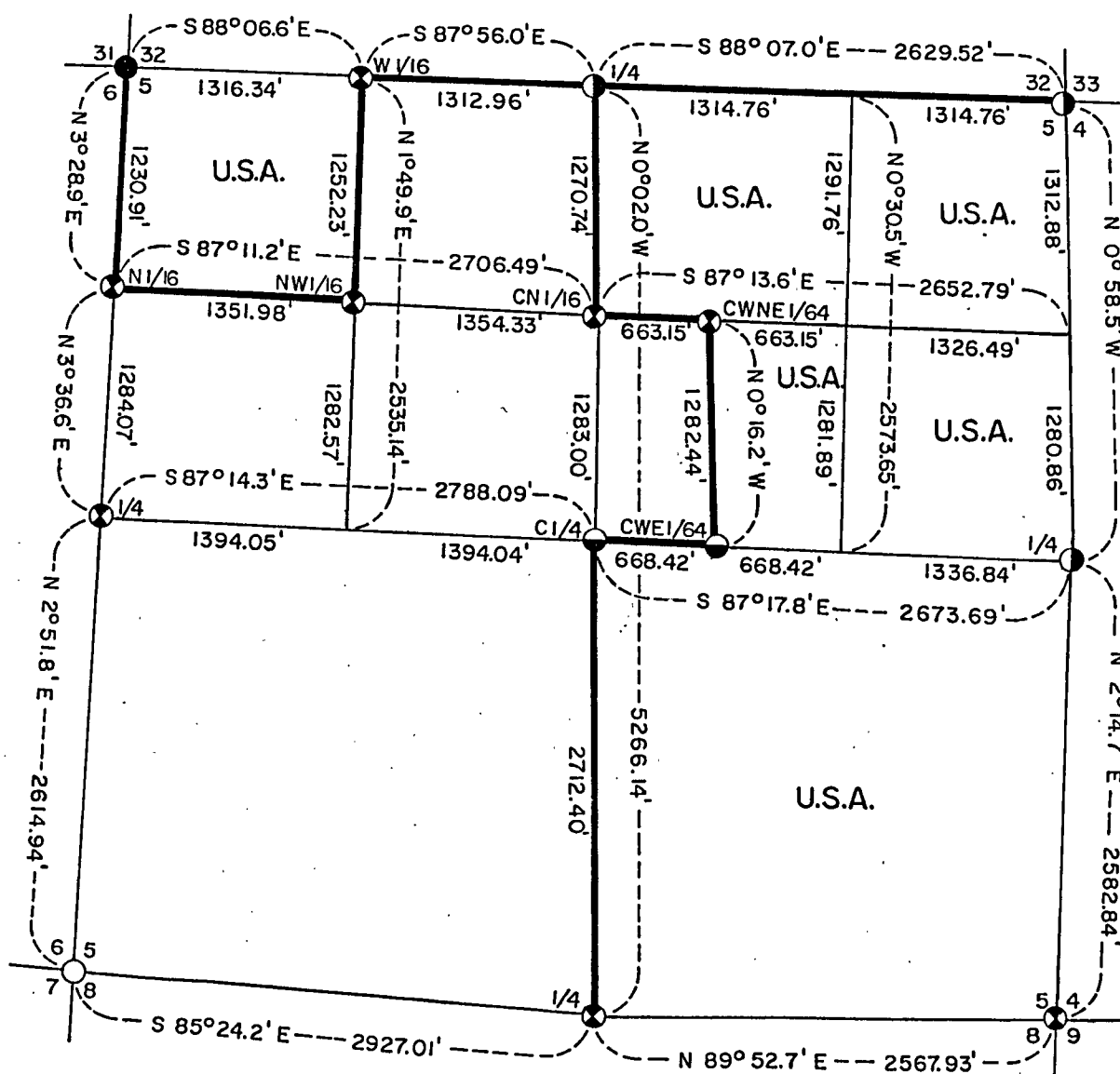
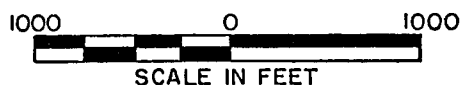


Stock No. 26273

SHEET 1 OF 4

PLAT OF SURVEY U.S. GOVERNMENT LAND

Being the N1/2, NE1/4; SE1/4, NE1/4; E1/2, SW1/4, NE1/4;
SE1/4; and the NW1/4, NW1/4; Section 5
Township 36 North, Range 15 East, Fourth Principal Meridian
FOREST COUNTY, WISCONSIN



LEGEND

- ⊗ 2"x36" Aluminum Monument
- 2"x30" Aluminum Monument
- ⊖ 2"x60" Aluminum Monument
- Forest County Monument
- 1 1/2" Iron Pipe in Road Surface
- Marked Boundary Line of U.S. Government Lands

Conversion Factors:
Feet to Meters-3.280833
Meters to Feet-0.304801

Stock No. 26273

Sheet 2 of 4

SURVEY NOTES

This survey was made by the U. S. Department of Agriculture, Forest Service, for the purpose of restoring and establishing corners on the perimeter of Section 5, for establishing subdivisional corners within Section 5, and for locating and marking the boundaries of U. S. Government lands on their perimeter and within Section 5, Township 36 North, Range 15 East, Fourth Principal Meridian, Forest County, Wisconsin.

The U. S. Government lands in this section were acquired in 1935.

The original Government subdivision survey of this township was made in 1857. In 1915, a subdivision of this section was done by John J. Melendey.

The corner positions recovered, restored, and established by this survey are marked by the monument described in the map legend.

The corner positions established were located to an accuracy of one part in 3000.

The bearings between corner positions are true bearings as determined by solar observations.

The field notes of this survey and a copy of this plat are on file in the Forest Supervisor's Office at Rhineland, Wisconsin.

CORNERS RECOVERED AND RESTORED

1. Corner to Sections 5, 6, 31, and 32, T.36-37N., R.15E.
 Corner position monumented by Phillip Hansen, R.L.S. Certificate on file in Forest County.
 Corner References:

Red Maple	8"	N.68°E.	11.15 feet
White Spruce	7"	S.66°W.	19.18 feet
White Spruce	9"	N.69°W.	23.63 feet
Steel Sign Post		South	1.90 feet
2. Corner to Sections 4, 5, 32, and 33, T.36-37N., R.15E.
 Corner position found marked by a post point in rock pile 4'± below road surface--from J. Melendey's survey of 1911. Placed monument 18" below road surface.
 Corner References:

Cedar	8"	N.54°E.	44.09 feet
Cedar	8"	S.82°E.	38.51 feet
"X" on Rock			
3'x3'x4'		S.84°W.	43.30 feet
Power Pole			
#3715-32R1		N.33°W.	64.88 feet
Steel Sign Post		East	13.80 feet
3. Corner to Sections 4, 5, 8, and 9, T.36N., R.15E.
 Corner position monumented by Milo Stefan, R.L.S. Certificate on file in Forest County.
4. Corner to Sections 5, 6, 7, and 8, T.36N., R.15E.
 Corner position monumented by Thomas Arnott, R.L.S. Certificate on file in Forest County.

Stock No. 26273

Sheet 3 of 4

5. Quarter Corner to Sections 5 and 32, T.36-37N., R.15E.
Corner position monumented by Milo Stefan, R.L.S. Certificate on file in Forest County.

6. Quarter Corner to Sections 4 and 5, T.36N., R.15E.
Corner recovered from witness corner set by J. Melendey in 1918 survey of Section 5. Monument placed 18" below road surface.
Corner References:

White Spruce	14"	N.46°E.	57.57 feet
Tamarack	8"	S.73°W.	69.16 feet
Power Pole			
#3615-5E1		N.51°W.	38.80 feet
Steel Sign Post		West	24.50 feet

7. Quarter Corner to Sections 5 and 8, T.36N., R.15E.
Corner position monumented by Milo Stefan, R.L.S. Certificate on file in Forest County.

8. Quarter Corner to Sections 5 and 6, T.36N., R.15E.
Corner position found marked by a post hole and references from J. Melendey's survey of Section 5 in 1911.
Corner References:

Red Maple	5"	N.19°E.	26.40 feet
Dbl. Red Maple	7"	N.71°E.	30.75 feet
"X" on Rock			
5'x7'		S.19°W.	53.58 feet
White Birch	7"	S.81°W.	40.64 feet
Steel Sign Post		Northwest	1.10 feet

9. Center Quarter Corner to Section 5, T.36N., R.15E.
Corner position monumented by Milo Stefan, R.L.S., replacing J. Melendey's post from 1911. Land Corner Restoration Certificate on file.

10. West One-Sixteenth Corner to Sections 5 and 32.
Corner found marked by an iron pipe and fallen wood post from J. Melendey's survey of 1911.
Corner References:

Red Maple	4"	N.84°E.	9.65 feet
Red Maple	6"	S.54°W.	23.39 feet
Red Maple	6"	N.20°W.	8.58 feet
Steel Sign Post		South	1.30 feet

11. North One-Sixteenth Corner to Sections 5 and 6.
Corner found marked by a post hole and references from J. Melendey's survey of 1911.
Corner References:

Spruce	10"	N.56°E.	31.23 feet
Red Maple	6"	S.53°W.	37.22 feet
"X" on Rock			
4'x4'x2'		N.50°W.	23.59 feet
Steel Sign Post		East	2.70 feet

12. Center North One-Sixteenth Corner to Section 5.
Corner found monumented by Milo Stefan, R.L.S., replacing J. Melendey's post from 1911. Land Corner Restoration Certificate on file.

Stock No. 26273

Sheet 4 of 4

CORNERS ESTABLISHED1. Center West Northeast One-Sixtyfourth to Section 5.

Set this corner midpoint and on line between center north one-sixteenth and the northeast one-sixteenth.

Corner References:

Aspen	8"	N.56°E.	62.18 feet
Balsam	3"	S.49°E.	48.82 feet
Black Cherry	12"	N.11°W.	55.70 feet
Steel Sign Post		West	0.75 feet

2. Center West-East One-Sixtyfourth to Section 5.

Set this corner midpoint and on line between center quarter and center east one-sixteenth.

Corner References:

Spruce	6"	N.78°E.	30.82 feet
Spruce	4"	S.01°E.	22.08 feet
Cedar	4"	N.61°W.	68.13 feet
Steel Sign Post		North	2.25 feet

3. Northwest One-Sixteenth Corner to Section 5.

Corner position established at the intersection of the north and west one-sixteenth lines to Section 5.

Corner References:

Red Maple	5"	N.88°E.	47.83 feet
Hemlock	9"	S.17°E.	56.00 feet
Red Maple	5"	S.67°W.	37.65 feet
Steel Sign Post		West	1.70 feet

SURVEYOR'S AFFIDAVITState of Wisconsin]
County of Forest] SS

I, Alan D. Harrison, Cadastral Surveyor, USDA, Forest Service, and a registered surveyor in the State of Wisconsin, hereby certify that I have surveyed and subdivided Section 5, Township 36 North, Range 15 East, Fourth Principal Meridian, State of Wisconsin.

The plat map and the notes herewith are a correct representation of the land surveyed and divided. I have surveyed and subdivided said section in accordance with the rules for survey of the public lands and with the statutes of the State of Wisconsin.



Alan D. Harrison
Cadastral Surveyor, USDA, Forest Service
R.L.S., State of Wisconsin
Certificate S-1651

Plat Ready For Filing:

Dale S. Haegg
District Ranger

Date of Survey: 1986