

FOREST CO SURVEYOR

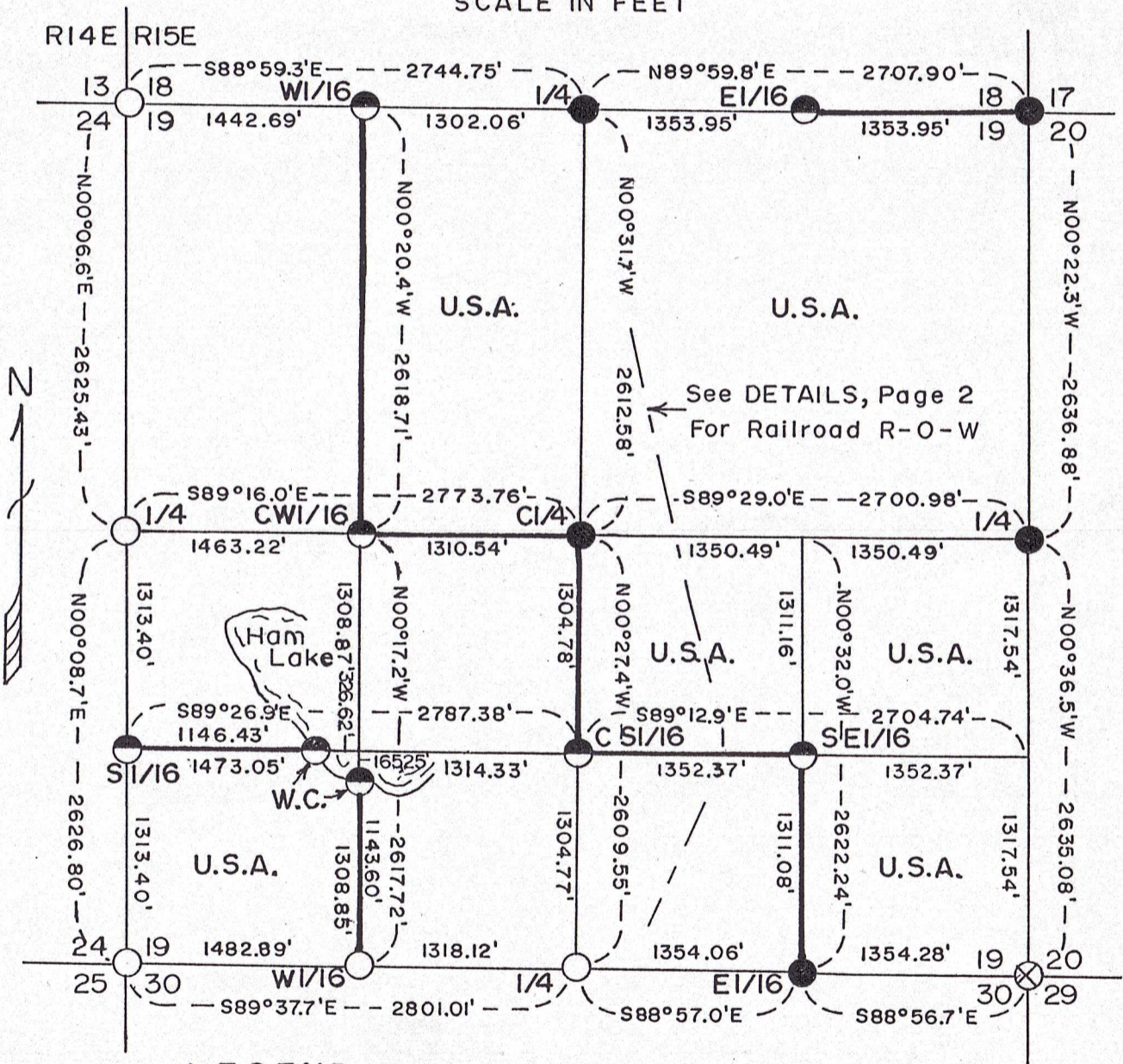
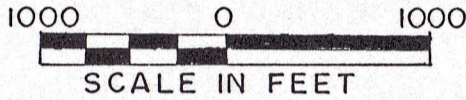
FILE # 351519-19890906

DATE \_\_\_\_\_ BY \_\_\_\_\_

# PLAT OF SURVEY U.S. GOVERNMENT LAND

Being the E1/2, NW1/4; NE1/4; N1/2, SE1/4; SE1/4, SE1/4;  
and the SW1/4, SW1/4; Section 19.

Township 35 North, Range 15 East, Fourth Principal Meridian  
FOREST COUNTY, WISCONSIN



### LEGEND

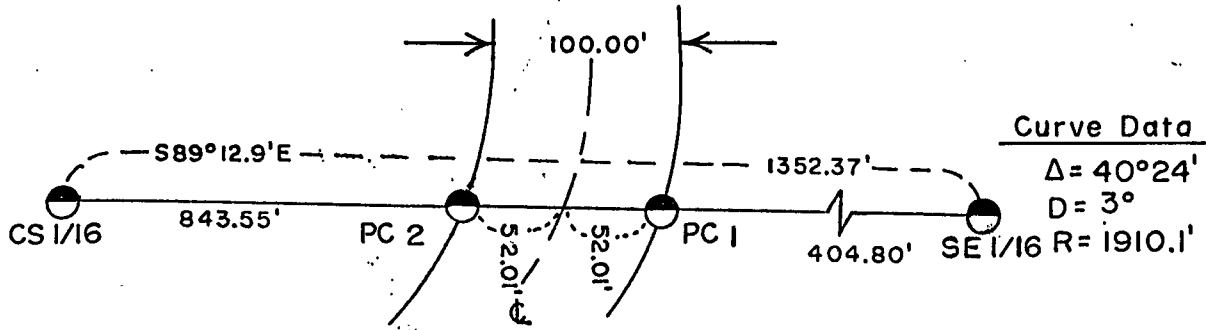
- Railroad Spike in Road Surface
- ⊗ 1 1/4" Iron Pipe Below Road Surface
- 2 1/2" Aluminum Monument, 36" Long
- ◐ 1" Aluminum Monument, 36" Long

CONVERSION FACTORS:  
Feet to Meters = 0.304801  
Meters to Feet = 3.280833

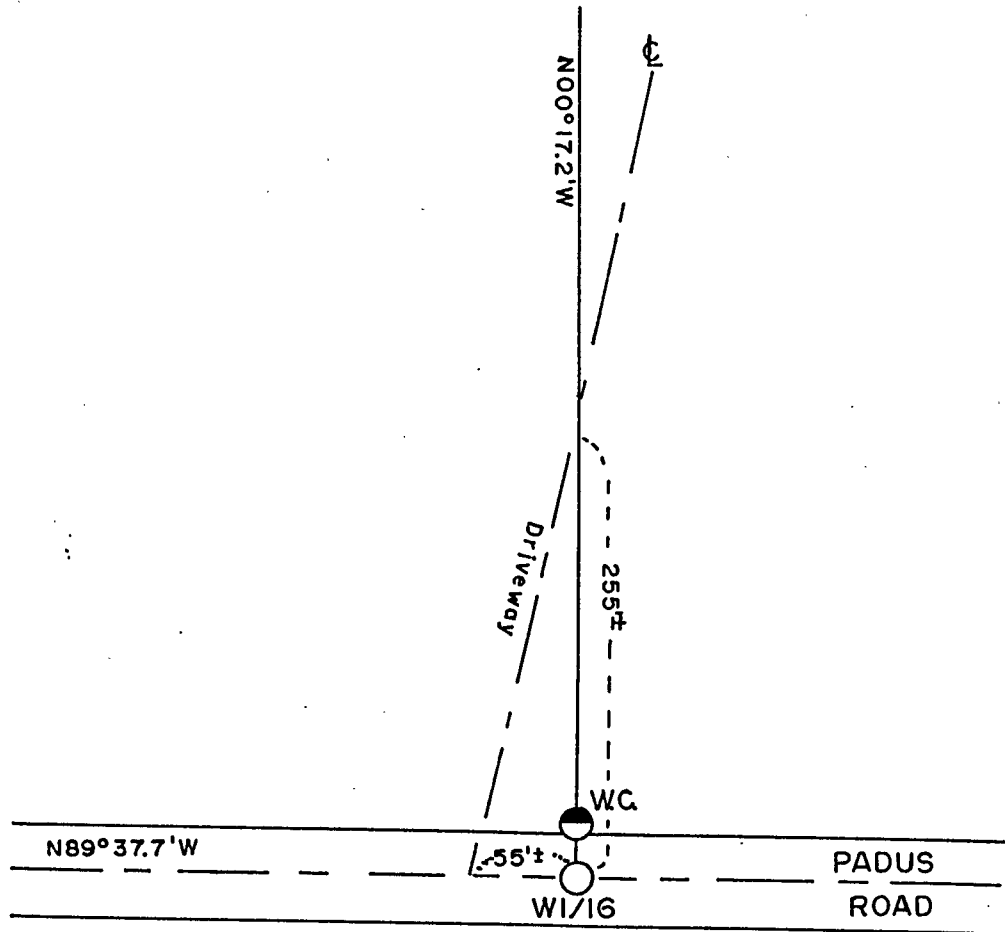
— Marked Boundary Lines, U.S. Government Lands

DETAILS

Railroad R-O-W SE 1/4 Section 19



Driveway Encroachment



Stock No. 26273

Sheet 3 of 7

SURVEY NOTES

This survey was made by Milo E. Stefan, a private land surveyor, RLS #1558, under contract with the U. S. Department of Agriculture, Forest Service, for the purpose of restoring and establishing corners on the perimeter of Section 19, for establishing subdivisional corners within Section 19 and for locating and marking the boundaries of U. S. Government lands on the perimeter and within Section 19, Township 35 North, Range 15 East, Fourth Principal Meridian, Forest County, Wisconsin.

The U. S. Government lands in this section were acquired in 1935 - 1938.

The original government subdivision survey of this township was made in 1859 by James McBride. The west boundary by Armetas Curtis in 1857.

The corner positions recovered, restored and established by this survey are marked by the monument described in the map legend. They are also placed within an accuracy of one part in 3000 or better.

The bearings between corner positions are true bearings as determined by a solar observation.

The field notes of this survey and a copy of the plat are on file in the Forest Supervisor's Office at Rhinelander, Wisconsin.

CORNERS RECOVERED AND RESTORED

1. Section Corner to Sections 13, 18, 19 and 24, T35N, R14-15E.  
Corner position restored from Forest Service and Department of Transportation reference monuments of 1985. A railroad spike was placed to mark the corner position.

## Corner References:

Forest Service Brass Cap (1980)		N50°W	75.00 feet
(WC #2) DOT Aluminum Monument (1985)		S68°-01'W	75.91 feet
(WC #3) DOT Aluminum Monument (1985)		N53°-52'W	91.75 feet
(WC #4) DOT Aluminum Monument (1985)		N68°-01'E	81.37 feet
(WC #5) DOT Aluminum Monument (1985)		S53°-52'E	56.76 feet
Steel Sign Post SW of DOT WC #3			

2. Section Corner to Sections 17, 18, 19 and 20, T35N, R15E.  
Corner position restored from remains of the original bearing trees.

## Corner References:

Red Pine	6"	S9°W	37.95 feet
Red Pine	8"	S63°W	51.58 feet
Sugar Maple	12"	N12°W	103.01 feet
Sugar Maple	14"	N58°W	96.87 feet
Steel Sign Post		Southwest	1.73 feet

Stock No. 26273

Sheet 4 of 7

3. Section Corner to Sections 19, 20, 29, and 30, T35N, R15E.

Corner position found witnessed by reference monuments north and south as set by Milo E. Stefan, RLS #1558, on November 19, 1981. On June 8, 1989 Forest Service placed a 1 1/4" iron pipe for corner.

## Corner References:

Reference Monument #1		North	32.01 feet
Reference Monument #2		South	24.10 feet
Sugar Maple	7"	N59°E	71.44 feet
Yellow Birch	5"	S31°E	22.23 feet
Black Ash	10"	S12°W	52.19 feet
Hemlock	22"	N39°W	45.91 feet
Steel Sign Post		North of RM #1	1.50 feet

4. Section Corner to Sections 19, 24, 25 and 30, T35N, R15E.

Corner position found marked by a PK nail with Forest Service and DOT reference marks in place.

## Corner References:

Forest Service Brass Cap (1965)		N47°-12'E	70.00 feet
(WC #1) DOT Aluminum Monument (1985)		Northwest	41.52 feet
(WC #2) DOT Aluminum Monument (1985)		Northwest	66.91 feet
(WC #3) DOT Aluminum Monument (1985)		Northwest	53.84 feet
(WC #4) DOT Aluminum Monument (1985)		Northwest	75.14 feet
Steel Sign Post NW of DOT WC #3			.68 feet
Basswood	18"	N63°E	89.12 feet
Basswood	10"	N34°W	73.80 feet

5. Quarter Corner to Sections 18 and 19, T35N, R15E.

Corner position restored by accepting of east sixteenth and using direction and doubling the distance westerly from Section Corner to the east.

## Corner References:

Red Pine	14"	N65°E	61.37 feet
Red Pine	14"	S70°E	8.12 feet
Red Pine	10"	S58°E	28.43 feet
Red Pine	12"	N38°W	10.85 feet
Steel Sign Post		Northeast	1.00 feet

6. Quarter Corner to Sections 19 and 20, T35N, R15E.

Corner position restored from evidence of the original bearing trees and post hole.

## Corner References:

Sugar Maple	8"	N80°E	22.09 feet
Sugar Maple	4"	S5°W	13.80 feet
Sugar Maple	6"	N72°W	50.29 feet
Sugar Maple	4"	N7°W	16.75 feet
Steel Sign Post		Southeast	3.62 feet

7. Quarter Corner to Sections 19 and 30, T35N, R15E.

Corner position found marked by an aluminum monument as set by Milo E. Stefan, RLS #1558. Certificate on file at the Forest County Courthouse #127202.

Stock No. 26273

Sheet 5 of 7

8. Quarter Corner to Sections 19 and 24, T35N, R15E.

Corner position restored from Department of Transportation reference monuments of 1985. A railroad spike was placed to mark the corner.

## Corner References:

(WC #1) DOT Aluminum Monument (1985)		S57°-25'W	57.60 feet
(WC #2) DOT Aluminum Monument (1985)		N51°-39'W	69.59 feet
(WC #3) DOT Aluminum Monument (1985)		N57°-25'E	101.17 feet
(WC #4) DOT Aluminum Monument (1985)		S51°-39'E	67.40 feet
Steel Sign Post SE of DOT WC #4			.77 feet

9. East Sixteenth Corner to Sections 19 and 30, T35N, R15E.

Corner position found marked by an aluminum monument below the road surface. Corner established by the Forest Service in 1986.

## Corner References:

Sugar Maple	17"	N69°E	119.42 feet
"X" on Granite Boulder, 3' x 3' x 2'		S77°W	40.34 feet
Sugar Maple	12"	N13°W	58.00 feet
Steel Sign Post		North	13.49 feet

10. Center Quarter Corner to Section 19, T35N, R15E.

Corner position found marked by an iron pipe of long standing.

## Corner References:

Basswood	10"	S73°E	19.59 feet
Basswood	7"	S31°W	18.69 feet
Steel Sign Post		Northeast	.96 feet

CORNERS ESTABLISHED1. West Sixteenth Corner to Sections 18 and 19, T35N, R15E.

Corner position established at proportioned distance on line between the North  $\frac{1}{4}$  Corner and Northwest Section Corner to Section 19.

## Corner References:

Sugar Maple	6"	S32°E	36.05 feet
Red Maple	10"	S40°W	19.53 feet
Steel Sign Post		Southeast	.82 feet

2. East Sixteenth Corner to Sections 18 and 19, T35N, R15E.

Corner position established at midpoint and on line between the North Quarter Corner and Northeast Section Corner to Section 19.

## Corner References:

White Birch	3"	N88°E	31.59 feet
Sugar Maple	8"	N56°W	53.17 feet
Steel Sign Post		Southwest	.88 feet

3. South Sixteenth Corner to Sections 19 and 24, T35N, R14-15E.

Corner position established at midpoint and on line between the West Quarter Corner and the Southwest Section Corner to Section 19.

## Corner References:

Red Oak	14"	N74°W	36.72 feet
Basswood	6"	S59°W	39.38 feet
Power Pole		N31°W	54.20 feet
Steel Sign Post		Southwest	.52 feet

Stock No. 26273

Sheet 6 of 7

4. West Sixteenth Corner to Sections 19 and 30, T35N, R15E.

Corner position established at proportioned distance on line between the South Quarter Corner and Southwest Section Corner to Section 19.

## Corner References:

Reference Monument		North	25.21 feet
Red Pine	10"	S6°W	149.46 feet
White Spruce	8"	N58°W	89.62 feet
Power Pole #35-15-19-L		North	35.03 feet
Steel Sign Post		Northwest	.75 feet

5. Center West Sixteenth Corner to Section 19, T35N, R15E.

Corner position established at midpoint and on line between the West and Center Quarter Corners to Section 19.

## Corner References:

Sugar Maple	12"	N30°E	34.21 feet
Sugar Maple	14"	S64°W	12.59 feet
Sugar Maple	10"	N30°W	23.68 feet
Steel Sign Post		Northeast	1.16 feet

6. Southwest Sixteenth Corner to Section 19, T35N, R15E.

Corner position established at the intersection of the west and south sixteenth line to Section 19. Corner position falls in Ham Lake. We, therefore, establish a Witness Corner westerly and southerly on the sixteenth lines.

Witness Corner 1: Established on the south sixteenth line of Section 19, 326.62 feet westerly of the Southwest Sixteenth Corner.

## Corner References:

Yellow Birch	10"	S69°W	27.97 feet
Yellow Birch	6"	N75°W	34.94 feet
Steel Sign Post		Southwest	1.02 feet

Witness Corner 2: Established on the west sixteenth line to Section 19, 165.25 feet southerly of the Southwest Sixteenth Corner.

## Corner References:

Hemlock	7"	S60°E	1.96 feet
Yellow Birch	5"	S65°W	14.07 feet
Steel Sign Post		Southwest	1.07 feet

7. Center South Sixteenth Corner to Section 19, T35N, R15E.

Corner position established at midpoint and on line between the Center and South Quarter Corners to Section 19.

## Corner References:

Sugar Maple	12"	N66°E	46.12 feet
Sugar Maple	8"	S70°E	66.28 feet
Steel Sign Post		Northeast	1.11 feet

8. Southeast Sixteenth Corner to Section 19, T35N, R15E.

Corner position established at the intersection of the East and South Sixteenth line to Section 19.

## Corner References:

Red Maple	6"	N15°E	60.69 feet
Red Maple	10"	N46°W	42.70 feet
Steel Sign Post		Northwest	.84 feet

Stock No. 26273

Sheet 7 of 7

9. Property Corner #1

Corner position established at the intersection of the south sixteenth line with the east edge of a 100 foot railroad right-of-way.

## Corner References:

Tamarack	16"	N39°E	32.33 feet
Tamarack	20"	S13°E	31.41 feet
Steel Sign Post		Northeast	.81 feet

10. Property Corner #2

Corner position established at the intersection of the south sixteenth line with the west edge of a 100 foot railroad right-of-way.

## Corner References:

Sugar Maple	6"	N11°E	41.75 feet
Sugar Maple	6"	N56°W	29.58 feet
Steel Sign Post		Northwest	.89 feet

SURVEYORS AFFIDAVIT

State of Wisconsin) )  
County of Forest ) SS

I, Milo E. Stefan, Registered Land Surveyor in the State of Wisconsin, hereby certify that I have surveyed and subdivided Section 19, township 35 north, range 15 east, Fourth Principal Meridian, State of Wisconsin.

The plat map and the notes herewith are a correct representation of the land surveyed and divided. I have surveyed and subdivided said section in accordance with the rules for the survey of the public lands and with the statutes of the State of Wisconsin.



Date of Survey: 1989

*Milo E. Stefan*  
Registered Land Surveyor, State of Wisconsin  
Certificate No. 1558

Plat ready for filing:

*Dale B. Stage*  
District Ranger

