

Stock No. 26273

FOREST CO SURVEYOR

FILE # 351434-19910408

DATE _____ BY _____

SHEET 1 OF 3

BOUNDARY LINE ESTABLISHMENT

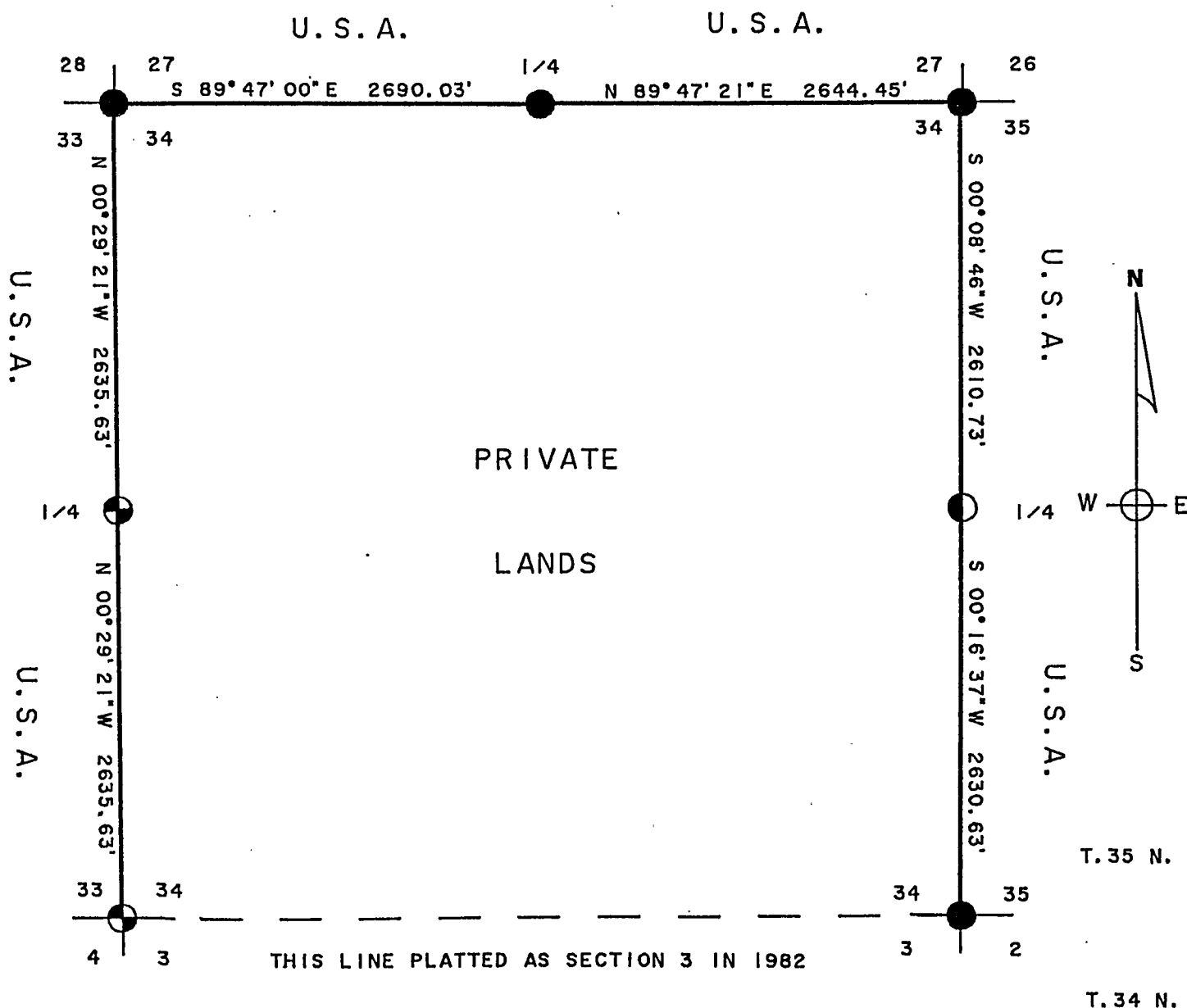
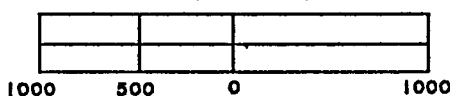
U.S. GOVERNMENT LANDS

BEING THE EXTERIOR BOUNDARY OF SECTION 34;

TOWNSHIP 35 NORTH; RANGE 14 EAST; FOURTH PRINCIPAL MERIDIAN;

FOREST COUNTY, WISCONSIN

SCALE IN FEET



LEGEND

- 2" BRASS CAPPED MONUMENT, FOUND IN PLACE.
- ⊕ 2 1/2" ALUMINUM MONUMENT, FOUND IN PLACE.
- ⊙ 2 1/2" X 36" ALUMINUM MONUMENT, SET THIS SURVEY.
- MARKED BOUNDARY LINES OF U.S. GOVERNMENT LANDS.



Stock No. 26273

Sheet 2 of 3

SURVEY NOTES

This survey was made by the U.S. Department of Agriculture, Forest Service, for the purpose of restoring and establishing corners on the perimeter of Section 34, and for locating and marking the boundaries of U.S. Government land on the perimeter of Section 34, Township 35 North, Range 14 East, Fourth Principal Meridian, Forest County, Wisconsin.

The original government subdivision survey of this township was made in 1859. John Melendy surveyed east and north lines in 1907. Milo Stefan surveyed south line of Section in 1982.

The corner positions recovered, restored and established by this survey are marked by the monument described in the map legend.

The corner positions established were located to an accuracy of one part in 5000.

The bearings between corner positions are true bearings as determined by solar observations.

The field notes of this survey and a copy of this plat are on file in the Forest Supervisor's Office at Rhinelander, Wisconsin.

CORNERS RECOVERED OR RESTORED

1. Corner common to Sections 2, 3, 34, and 35, T34-35N, R14E.
Corner recovered by Jean Resvick, R.L.S., in 1963.
Certificate on file in Forest County.
2. Corner common to Sections 3, 4, 33, and 34, T34-35N, R14E.
Corner recovered by Milo Stefan, R.L.S. in 1982.
Certificate on file in Forest County.
3. Corner common to Sections 27, 28, 33, and 34.
Corner recovered by Jean Resvick, R.L.S., in 1977.
Certificate on file in Forest County.
4. Corner common to Sections 26, 27, 34, and 35.
Corner recovered by Jean Resvick, R.L.S., in 1972.
Certificate on file in Forest County.
5. Quarter corner common to Sections 33 and 34.
Corner restored by Alan Harrison, R.L.S., in 1988.
Certificate on file in Forest County.
6. Quarter corner common to Sections 27 and 34.
Corner recovered by Jean Resvick, R.L.S., in 1972.
Certificate on file in Forest County.
7. Quarter corner common to Sections 34 and 35.
Corner found marked by 4' high wood post.
Corner references:

Sugar	9"	N.11°E.	90.99 feet
R. Maple	3"	S.20°E.	42.75 feet
R. Maple	4"	S.68°W.	30.92 feet
Steel Sign Post		South	1.00 feet

Stock No. 26273

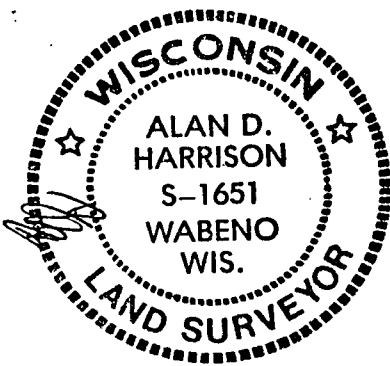
Sheet 3 of 3

SURVEYOR'S AFFIDAVIT

State of Wisconsin]
County of Forest]

I, Alan D. Harrison, Land Surveyor, U.S.D.A. Forest Service and a Registered Land Surveyor in the State of Wisconsin, do hereby certify that I have surveyed the North, East and West lines of Section 34, Township 35 North, Range 14 East, Fourth Principal Meridian, State of Wisconsin.

The plat map and the noted herewith are a correct representation of the land surveyed and divided. I have surveyed said section in accordance with the rules for survey of the public lands and with the statutes of the State of Wisconsin.



Alan D. Harrison
LAND SURVEYOR, U.S.D.A. Forest Service
R.L.S. Number S-1651
State of Wisconsin

Plat ready for filing:

Dale Sturge
District Ranger

Date of Survey: 1990

