

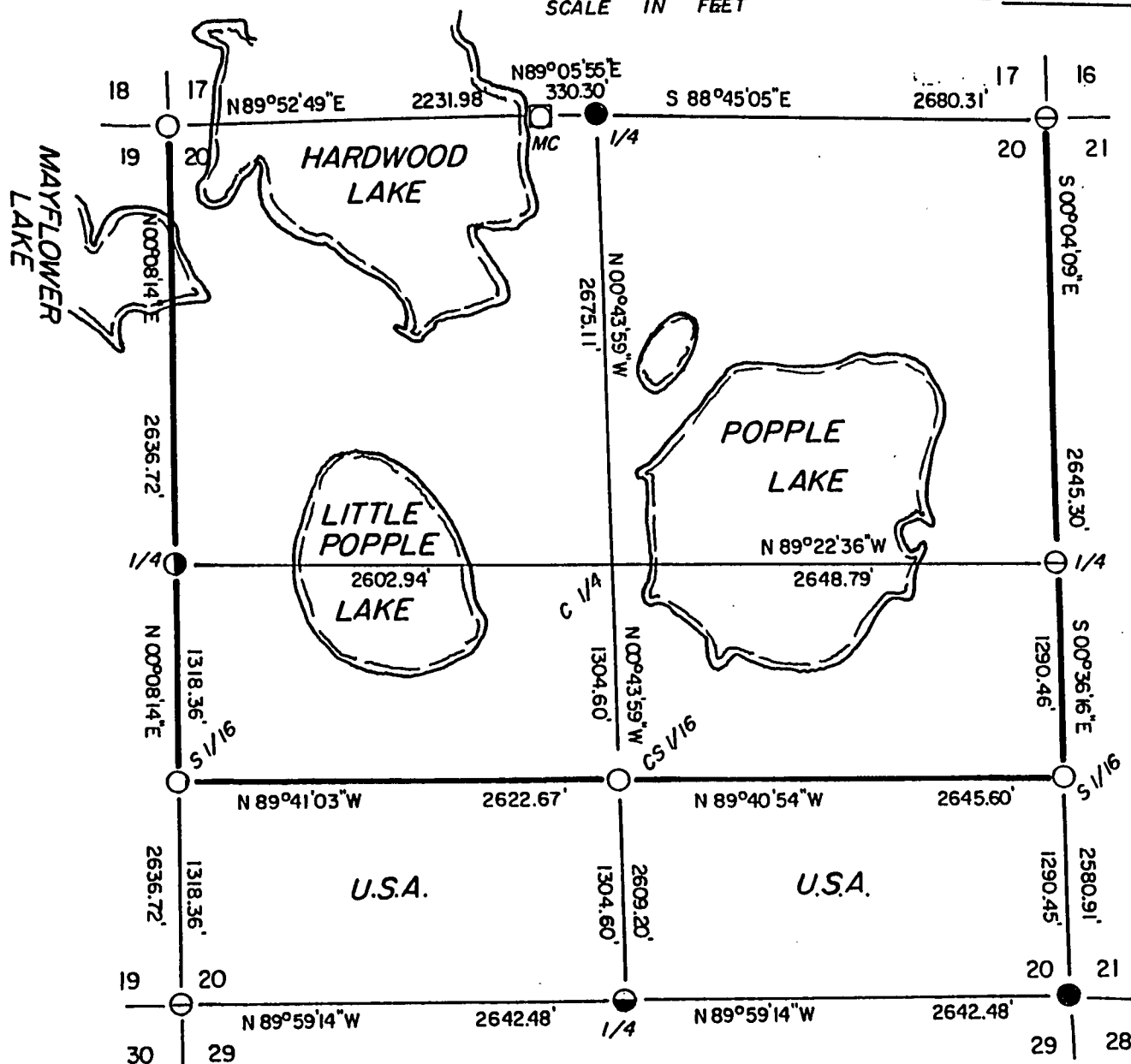
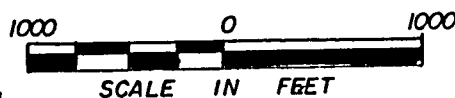
Stock No. 26273

Sheet one of four

PLAT OF SURVEY U.S. GOVERNMENT LAND

Being the S 1/2 - SW 1/4, S 1/2 - SE 1/4, of Section 20
Township 35 North, Range 14 East, Fourth Principal Meridian
Forest County, Wisconsin

FOREST CO SURVEYOR
FILE # 351420-19930901
DATE _____ BY _____



LEGEND

- ☐ = FOUND CONCRETE MONUMENT WITH BRASS CAP STAMPED FOR CORNER
- = FOUND 2" DIAMETER IRON PIPE WITH BRASS CAP STAMPED FOR CORNER
- ⊖ = FOUND 2" DIAMETER ALUMINUM MONUMENT WITH CAP STAMPED FOR CORNER
- ⊙ = SET 2" DIAMETER ALUMINUM MONUMENT, 36" LONG WITH CAP STAMPED FOR CORNER
- ⦿ = SET 2" DIAMETER ALUMINUM MONUMENT, 60" LONG WITH CAP STAMPED FOR CORNER
- = SET 1" DIAMETER ALUMINUM MONUMENT, 36" LONG WITH CAP STAMPED FOR CORNER
- = MARKED BOUNDARY LINES OF U.S. GOVERNMENT LAND



Stock No. 26273

Sheet two of four

SURVEY NOTES

This survey was made by AARON ASSOCIATES of Oconto Falls, Wisconsin, under contract with the U.S. Department of Agriculture, Forest Service, for the purpose of restoring and establishing corners on the perimeter of Section 20, for establishing subdivisional corners within Section 20, and for locating and marking the boundaries of U.S. Government land on their perimeter and within Section 20, Township 35 North, Range 14 East, Fourth Principal Meridian, Forest County, Wisconsin.

The U.S. Government land in this section were acquired in 1935 and 1936.

The original government survey of this township was made in 1859.

The corner positions recovered, restored, and established by this survey are marked with monuments described in the map legend.

The corner positions established were located to an accuracy of one part in 5,000.

The bearings between corner positions are true bearings as determined by solar observations.

The field notes of this survey and a copy of this plat are on file in the Forest Supervisor's Office at Rhinelander, Wisconsin.

CORNERS RECOVERED

- 1) Section Corner to Sections 17-18-19-20, T35N, R14E.
Corner recovered, set by Alan Harrison, RLS.
Certificate on file in Forest County Courthouse.
- 2) Section Corner to Sections 16-17-20-21, T35N, R14E.
Corner recovered, set by Alan Harrison, RLS.
Certificate on file in the Forest County Courthouse.
- 3) Section Corner to Sections 20-21-28-29, T35N, R14E.
Corner recovered, set by Jean Resvick, RLS. Certificate on file in the Forest County Courthouse.
- 4) Section Corner to Sections 19-20-29-30, T35N, R14E.
Corner recovered, set by Milo Stefan, RLS. Certificate on file in the Forest County Courthouse.
- 5) Quarter Corner to Sections 17-20, T35N, R14E.
Corner recovered, set by Jean Resvick, RLS. Certificate on file in the Forest County Courthouse.

Stock No. 26273

Sheet three of four

- 6) Quarter Corner to Sections 20-21, T35N, R14E.
Corner recovered, set by Alan Harrison, RLS. Certificate on file in the Forest County Courthouse.

- 7) Meander Corner to Sections 17-20, T35N, R14E, East Side of Lake.
Corner recovered, set by Jean Resvick, RLS. Certificate on file in the Forest County Courthouse.

- 8) Quarter Corner to Sections 20-29, T35N, R14E.
This corner position fell on a side hill in recently logged off timber. Corner evidence could not be located and the corner was determined lost and set by single proportionate measure. Corner references:

Dbl. Maple	6"	N55E	20.82 ft.
Dbl. Yellow Birch	5"	S50E	12.94 ft.
Maple	5"	S50W	16.59 ft.
Maple	8"	N80W	13.59 ft.
Steel Sign Post		S35E	0.6 ft.

- 9) Quarter Corner to Sections 19-20, T35N, R14E.
This corner position was determined lost after a diligent search proved unsuccessful. It was set by single proportionate measure. Corner references:

Tamarack	4"	N08E	87.18 ft.
Tamarack	5"	S88E	51.22 ft.
Maple	6"	S49W	97.71 ft.
Spruce	6"	N50W	52.98 ft.
Steel Sign Post		North	0.65 ft.

CORNERS ESTABLISHED

- 1) South Sixteenth Corner to Sections 20-21, T35N, R14E.
This corner position was set at midpoint and on line between the East quarter and Southeast corners of Section 20. Corner references:

Maple	6"	S89E	27.76 ft.
Red Pine	11"	S40E	9.42 ft.
Steel Sign Post		West	1.48 ft.

- 2) Center South Sixteenth Corner to Section 20, T35N, R14E.
This corner position was set at midpoint and on line between the Center quarter and South quarter corners of Section 20. Corner references:

Dbl. Maple	8"	N24E	8.22 ft.
Maple	10"	S26E	18.27 ft.
Steel Sign Post		West	0.95 ft.

- 3) South Sixteenth Corner to Sections 19-20, T35N, R14E.
This corner position was set at midpoint and on line between the West quarter and Southwest corners of Section 20. Corner references:

Maple	5"	N52E	10.00 ft.
Dbl Yellow Birch	7"	S32E	6.45 ft.
Steel Sign Post		North	0.90 ft.

Stock No. 26273

Sheet four of four

SURVEYOR'S AFFIDAVIT

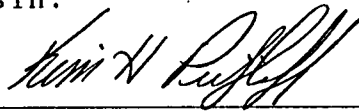
STATE OF WISCONSIN)
OCONTO COUNTY)SS

I, Kim H Pritzlaff, Registered Land Surveyor in the State of Wisconsin, hereby certify: that I have surveyed and subdivided Section 20, Township 35 North, Range 14 East, Fourth Principal Meridian, Forest County, Wisconsin;

That the field notes and plat map herewith are a correct representation of the land surveyed and subdivided; and that I have surveyed and subdivided said section in accordance with the rules for survey of the public lands and with the Statutes of the State of Wisconsin.

Date of Survey: 1993




Kim H Pritzlaff, RLS No. 1259
AARON ASSOCIATES
Oconto Falls, Wisconsin

Plat ready for filing:


District Ranger

