

Stock No. 26273

PLAT OF SURVEY U.S. GOVERNMENT LAND

Sheet one of four

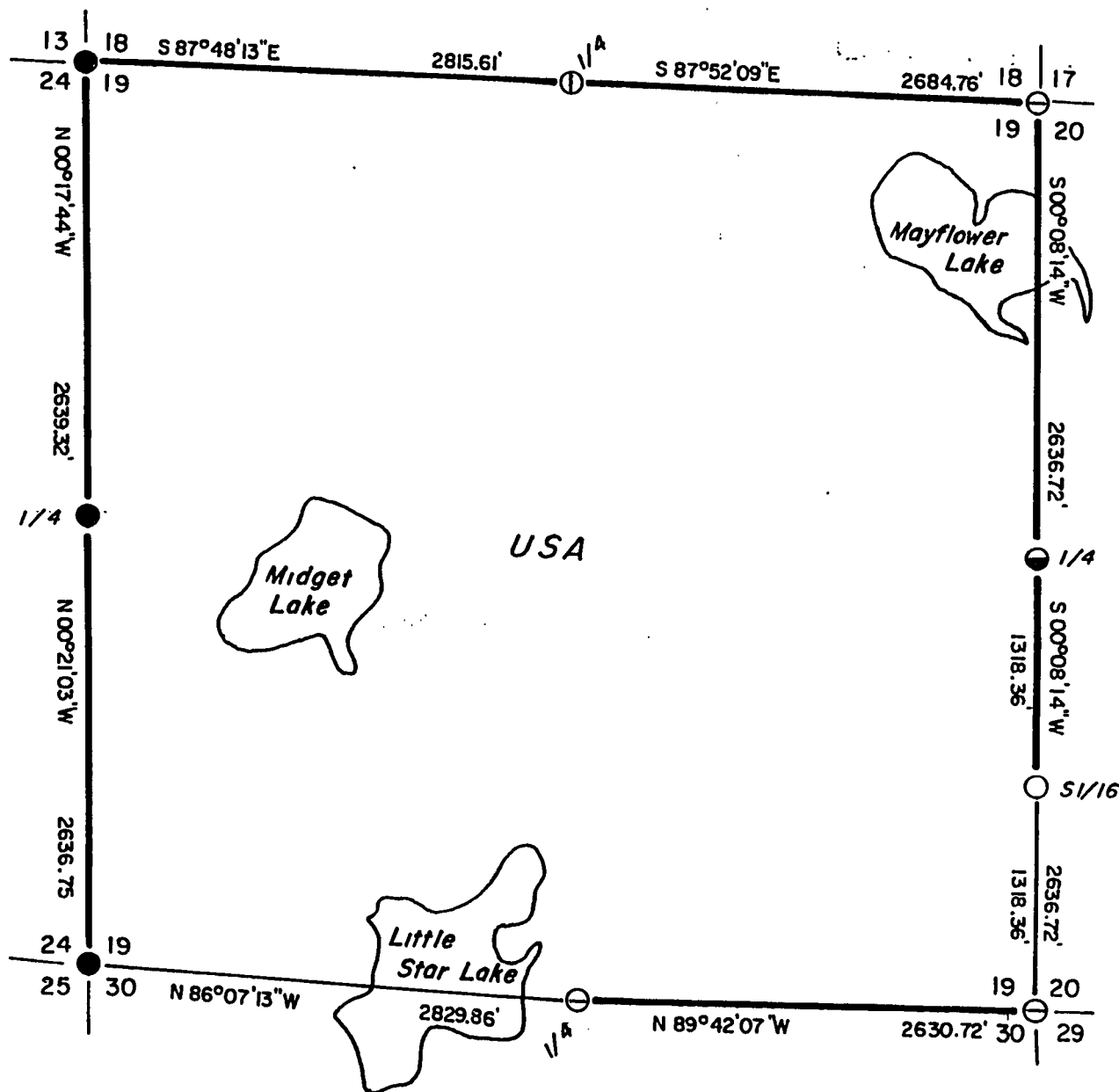
Being all of Section 19, Township 35 North, Range 14 East, 4th
Principal Meridian, Forest County, Wisconsin



FOREST CO SURVEYOR

FILE # 351419-19930901

DATE _____ BY _____



LEGEND

- = FOUND 1" DIAMETER FOREST COUNTY MONUMENT WITH ALUMINUM CAP STAMPED FOR CORNER
- ⊖ = FOUND 2" DIAMETER ALUMINUM MONUMENT WITH CAP STAMPED FOR CORNER
- ⊙ = SET 2" DIAMETER ALUMINUM MONUMENT, 36" LONG WITH CAP STAMPED FOR CORNER
- ⊗ = SET 2" DIAMETER ALUMINUM MONUMENT, 60" LONG WITH CAP STAMPED FOR CORNER
- = SET 1" DIAMETER ALUMINUM MONUMENT, 36" LONG WITH CAP STAMPED FOR CORNER
- = MARKED BOUNDARY LINES OF U.S. GOVERNMENT LANDS

Stock No. 26273

Sheet two of four

SURVEY NOTES

This survey was made by AARON ASSOCIATES of Oconto Falls, Wisconsin, under contract with the U.S. Department of Agriculture, Forest Service, for the purpose of restoring and establishing corners on the perimeter of Section 19, for establishing subdivisional corners within Section 19, and for locating and marking the boundaries of U.S. Government lands on their perimeter and within Section 19, Township 35 North, Range 14 East, Fourth Principal Meridian, Forest County, Wisconsin.

The U.S. Government lands in this Section were acquired in 1935.

The original Government subdivision survey of this Township was made in 1859.

The corner positions recovered, restored, and established by this survey are marked by monuments described in the map legend.

The corner positions established were located to an accuracy of one part in 5000.

The bearings between corner positions are true bearings, as determined by solar observations.

The field notes of this survey and a copy of this plat are on file in the Forest Supervisor's Office at Rhinelander, Wisconsin.

CORNERS RECOVERED AND RESTORED1) Corner to Sections 24-25-19-30, T35N, R13 & 14E.

This corner was found, monumented by Neal Sperhake, RLS. Certificate on file in Forest County Courthouse. Set new corner references:

Aspen	15"	N20°E	26.17'
Spruce	10"	S72°E	20.60'
Maple	12"	N30°W	40.51'
Maple	11"	N65°W	44.25'
Steel Sign Post		North	0.70'

2) Corner to Sections 13-24-18-19, T35N, R13 & 14E.

This corner was found, monumented by Neal Sperhake, RLS. Certificate on file in Forest County Courthouse. Set new corner references:

Basswood	10"	N55°E	17.02'
Ironwood	6"	S38°W	12.14'
Maple	12"	N65°W	27.85'
Maple	8"	N07°W	9.52'
Steel Sign Post		East	0.70'

3) Corner to Sections 17-18-19-20, T35N, R14E.

This corner was found, monumented by Alan Harrison, RLS. Certificate on file in Forest County Courthouse.

4) Corner to Sections 19-20-29-30, T35N, R14E.

This corner was found, monumented by Milo Stefan, RLS. Certificate on file in Forest County Courthouse.

Stock No. 26273

Sheet three of four

5) Quarter Corner to Sections 19-30, T35N, R14E.

This corner was found, monumented by Alan Harrison, RLS. Certificate on file in Forest County Courthouse.

6) Quarter Corner to Sections 24-19, T35N, R13 & 14E.

This corner was found, monumented by Neal Sperhake, RLS. Certificate on file in Forest County Courthouse. Set new references:

Maple	11"	N68°E	16.02'
Maple	10"	S21°E	14.21'
Basswood	10"	S45°W	16.92'
Maple(3)	6"	N74°W	16.18'
Steel Sign Post		South	0.80'

7) Quarter Corner to Sections 18-19, T35N, R14E.

This corner was restored from rotted vertical post fibers, roughly 3" in diameter, found south of CCC tag on small Maple tree. Hardwood stump holes were also found at the two bearing tree position calls. Corner references:

Maple	8"	N39°E	28.14'
Maple	12"	S67°E	25.34'
Maple	9"	S21°W	22.95'
Yellow Birch	7"	N51°W	15.27'

8) Quarter Corner to Sections 19-20, T35N, R14E.

This corner position was searched for and no evidence of the corner monument or bearing trees was found. The corner was determined lost and set at single proportionate measurement between the northeast and southeast corners of Section 19. Corner references:

Tamarack	4"	N08°E	87.18'
Tamarack	5"	S88°E	51.22'
Maple	6"	S49°W	97.71'
Spruce	6"	N50°W	52.98'
Steel Sign Post		North	0.65'

CORNERS ESTABLISHED1) South Sixteenth Corner to Sections 19-20, T35N, R14E.

This corner was set at midpoint and on line between the east quarter and southeast corners of Section 19. Corner references:

Maple	5"	N52°E	10.00'
Yellow Birch(2)	7"	S32°E	6.45'
Steel Sign Post		North	0.90'

Stock No. 26273

Sheet four of four

SURVEYOR'S AFFIDAVITSTATE OF WISCONSIN)
OCONTO COUNTY)SS

I, Kim H Pritzlaff, Registered Land Surveyor in the State of Wisconsin, hereby certify: that I have surveyed and subdivided section 19, Township 35 North, Range 14 East, Fourth Principal Meridian, Forest County, Wisconsin.

The field notes and plat map herewith are a correct representation of the lands surveyed and subdivided. I have surveyed and subdivided said section in accordance with the rules for survey of the public lands and with the Statutes of the State of Wisconsin.

Date of survey: 1992



A handwritten signature of Kim H. Pritzlaff in cursive script.

Kim H Pritzlaff, RLS No. 1259
AARON ASSOCIATES
Oconto Falls, Wisconsin

Plat ready for filing:

A handwritten signature of Sue Vap in cursive script.
District Ranger