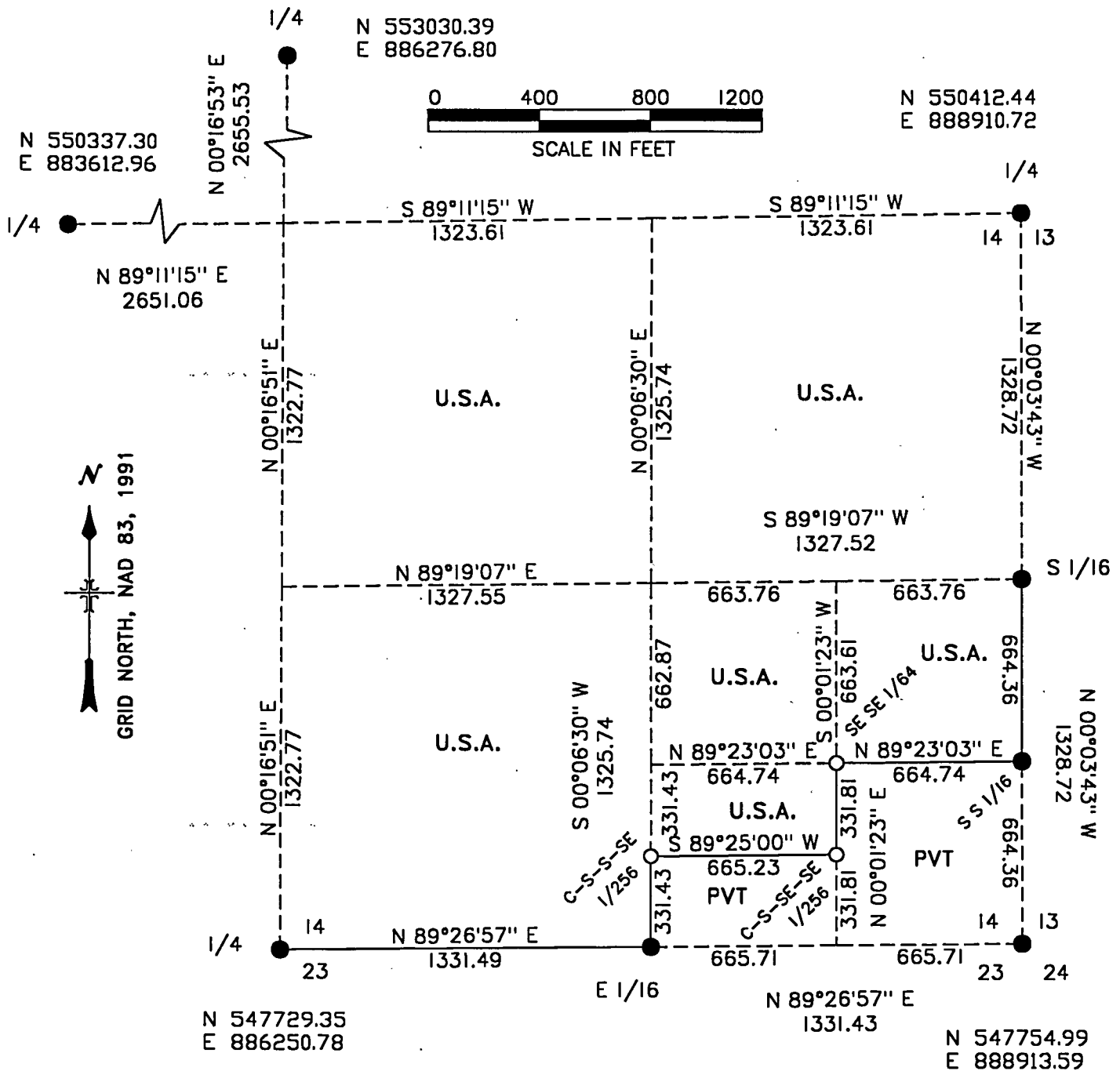




Stock No. 26273

## MAP OF SURVEY

U.S. GOVERNMENT LANDS BEING THE WEST 1/2, THE NE 1/4, THE WEST 1/2 SE 1/4, THE NE 1/4 SE 1/4, THE NORTH 1/2 SE 1/4 SE 1/4, AND THE N 1/2 SW 1/4 SE 1/4 SE 1/4, OF SECTION 14, T 35 N, R 14 E, FOREST COUNTY, WISCONSIN.



● RECOVERED MONUMENT PREVIOUSLY PERPETUATED BY U.S.F.S.

○ SET A 1" x 36" ALUMINUM DRIVE MONUMENT W/ 2" CAP.

— LINE MARKED TO U.S.F.S. STANDARDS.

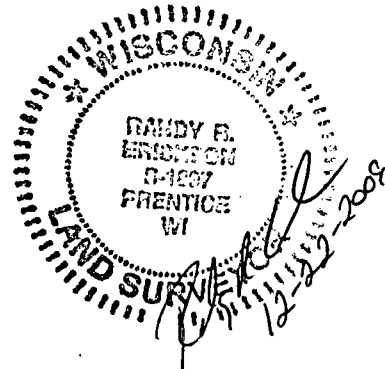
(N 274605.49) WISCONSIN NORTH ZONE STATE PLANE COORDINATES NAD 83, 1991.

PAGE 1 OF 3

FOREST CO SURVEYOR

FILE # 351414-20091222

DATE \_\_\_\_\_ BY \_\_\_\_\_





Stock No. 26273

SURVEY NOTES SECTION 14  
TOWNSHIP 35 NORTH, RANGE 14 EAST  
FOREST COUNTY, WISCONSIN

THIS SURVEY WAS MADE BY THE U.S.D.A. FOREST SERVICE AT THE REQUEST OF THE LAONA-LAKEWOOD DISTRICT RANGER OF THE CHEQUAMEGON-NICOLET NATIONAL FOREST. THE PURPOSE OF THIS SURVEY WAS TO RECOVER, RESTORE, ESTABLISH, MARK AND PERPETUATE THE BOUNDARIES AND CORNERS OF U.S. GOVERNMENT LANDS ON THE PERIMETER AND WITHIN SECTION 14, TOWNSHIP 35 NORTH, RANGE 14 EAST, FOREST COUNTY, WISCONSIN.

THE ORIGINAL GOVERNMENT SURVEY WAS MADE IN 1859 BY JAMES McBRIDE. THE SOUTH LINE OF SECTION 14 WAS RETRACED IN 1992 BY RLS #1651. THE EAST LINE OF SECTION 14 WAS RETRACED IN 1980 BY RLS #1170. THE NORTH LINE WAS RETRACED IN 1995 BY RLS #1259.

THIS SURVEY WAS MADE USING STATIC GPS. BEARINGS AND DISTANCES SHOWN ON MAP ARE GRID BASED ON WISCONSIN NORTH ZONE STATE PLANE COORDINATES. TRUE LINE TRAVERSES WERE RUNNING USING AN ELECTRONIC TOTAL STATION INSTRUMENT. ERROR OF CLOSURE WAS BETTER THAN 1:5000 BETWEEN GPS CONTROLLED POINTS.

MEASUREMENT TO BEARING TREES ARE TO ALUMINUM NAILS IN THE SIDE OF TREES ABOVE THE CENTER OF THE ROOT CROWN. BEARING TREES ARE BLAZED, SCRIBED AND PAINTED WITH RED PAINT.

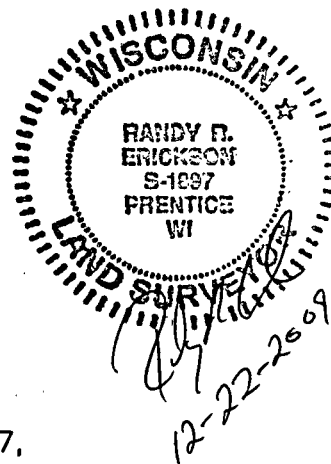
NO ENCROACHMENTS WERE FOUND ON NATIONAL FOREST LANDS.

DATE OF SURVEY: MAY 2007.

SURVEY CREW: RANDY ERICKSON, LAND SURVEYOR; DAVE BROWNELL, CREW CHIEF.

CORNERS RECOVERED

1. NORTH QUARTER CORNER SECTION 14, T 35 N, R 14 E.  
RECOVERED MONUMENT AS DESCRIBED ON U.S. PUBLIC LAND SURVEY MONUMENT RECORD, DOCUMENT #128611, FOREST CO. CLERK, FILED IN 1984 BY RLS #1254.
2. WEST QUARTER CORNER SECTION 14, T 35 N, R 14 E.  
RECOVERED MONUMENT AS DESCRIBED ON U.S. PUBLIC LAND SURVEY MONUMENT RECORD, DOCUMENT #124229, FOREST CO. REGISTER OF DEEDS, FILED IN 1983 BY RLS #1558.
3. EAST QUARTER CORNER SECTION 14, T 35 N, R 14 E.  
RECOVERED MONUMENT AS DESCRIBED ON MAP OF SURVEY BY RLS #1107 DATED IN 1980. FILED WITH FOREST COUNTY.
4. SOUTH QUARTER CORNER SECTION 14, T 35 N, R 14 E.  
RECOVERED MONUMENT AS DESCRIBED ON MAP OF BY RLS #1651, DATED 1992, FILED WITH FOREST COUNTY, CLERK, 6-2-1993.
5. SOUTHEAST CORNER SECTION 14, T 35 N, R 14 E.  
RECOVERED MONUMENT AS DESCRIBED ON CERTIFIED LAND CORNER RESTORATION, DOCUMENT #111735, FILED WITH FOREST COUNTY IN 1977 BY RLS #802.
6. EAST 1/16 CORNER SECTIONS 14 AND 23, T 35 N, R 14 E.  
RECOVERED MONUMENT AS DESCRIBED ON MAP OF SURVEY BY RLS #1651, DATED 1992, FILED WITH FOREST COUNTY 6-2-1993.
7. SOUTH 1/16 CORNER SECTIONS 13 AND 14, T 35 N, R 14 E.  
RECOVERED MONUMENT AS DESCRIBED ON MAP OF SURVEY RLS #1107, DATED 1980, FILED WITH FOREST COUNTY.
8. SOUTH SOUTH 1/64 CORNER SECTIONS 13 AND 14, T 35 N, R 14 E.  
RECOVERED MONUMENT AS DESCRIBED ON MAP OF SURVEY BY RLS #1107, DATED 1980, FILED WITH FOREST COUNTY. (MONUMENT IS ABOUT 0.6 FEET OUT OF POSITION.)





Stock No. 26273

## CORNERS ESTABLISHED

1. SE SE 1/64 CORNER SECTION 14, T 35 N, R 14 E.  
ESTABLISHED CORNER AT INTERSECTION OF STRAIGHT LINES BETWEEN  
OPPOSING 1/64 CORNERS ON THE PERIMETER OF THE SE 1/4 SE 1/4  
OF SECTION 14, SET A 1" X 36" ALUMINUM DRIVE MONUMENT WITH  
2" ALUMINUM CAP STAMPED TO IDENTIFY THE CORNER. MARKED BTS:  

ASPEN	7"	S 50° W	32.00 FEET
ASPEN	8"	N 82° W	28.78 FEET
STEEL SIGN POST	NORTHWEST	0.50 FEET	
2. C S-SE-SE 1/256 CORNER SECTION 14, T 35 N, R 14 E.  
ESTABLISHED CORNER MID POINT ON LINE BETWEEN THE SE SE 1/64  
AND E-E 1/64 ON SOUTH LINE OF SECTION 14. SET A 1" X 36"  
ALUMINUM DRIVE MONUMENT WITH A 2" ALUMINUM CAP STAMPED TO  
IDENTIFY THE CORNER. MARKED BEARING TREES:  

BALSAM	8"	N 80° E	13.62 FEET
BALSAM	12"	S 40° E	18.70 FEET
STEEL SIGN POST	NORTHWEST	0.65 FEET	
3. C-S-S-SE 1/256 CORNER SECTION 14, T 35 N, R 14 E.  
ESTABLISHED CORNER MID POINT ON LINE BETWEEN THE CS SE 1/64  
AND EAST 1/16 CORNER ON SOUTH LINE OF SECTION 14. SET A  
1" X 36" ALUMINUM DRIVE MONUMENT WITH A 2" ALUMINUM CAP  
STAMPED TO IDENTIFY THE CORNER. MARKED BEARING TREES:  

SUGAR	14"	S 28° W	11.89 FEET
SUGAR	10"	N 30° W	7.35 FEET
STEEL SIGN POST	NORTHWEST	0.5 FEET	

## SURVEYORS AFFIDAVIT

STATE OF WISCONSIN)  
COUNTY OF FOREST } SS

I RANDY R. ERICKSON, LAND SURVEYOR FOR THE U.S.D.A. FOREST  
SERVICE AND A REGISTERED LAND SURVEYOR IN THE STATE OF WISCONSIN  
DO HEREBY CERTIFY THAT I HAVE SURVEYED AND SUBDIVIDED SECTION 14,  
T 35 N, R 14 E, 4TH P.M., FOREST COUNTY, WISCONSIN. DURING THIS  
SURVEY I HAVE COMPLIED WITH THE RULES FOR THE DIVISION OF THE  
PUBLIC LANDS AND APPLICABLE STATE RULES. THE MAP OF SURVEY AND  
ACCOMPANYING NOTES ARE A CORRECT AND ACCURATE REPRESENTATION OF  
THE SURVEY TO THE BEST OF MY KNOWLEDGE AND BELIEF.

RANDY R. ERICKSON  
WIS. REG. L.S. #1897

DATE: 12-22-2009

