


Sheet 1 of 7



A horizontal scale bar with markings at 1,000, 0, and 1,000. Below the bar is the text "SCALE IN FEET".

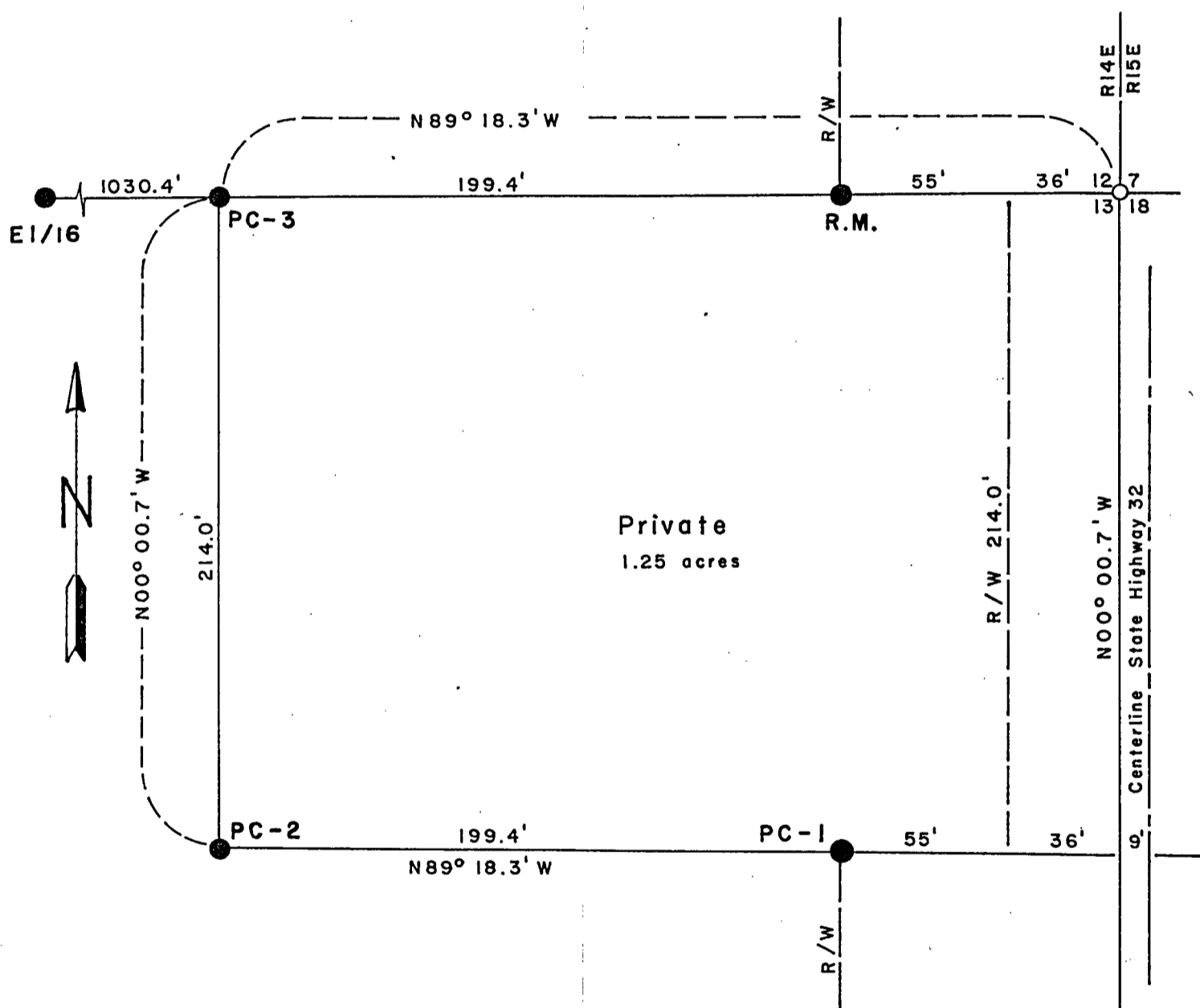


- FOREST CO SURVEYOR

FILE # 351413-19831102
DATE _____ BY _____

CONVERSION FACTOR:
Feet to Meters - 0.304801
Meters to Feet - 3.280833

Exception Parcel
N1/2NE1/4 Section 13 - T35N R14E 4th P.M.



SURVEY NOTES

This survey was made by the U.S. Department of Agriculture, Forest Service, for the subdivision of section 13, township 35 north, range 14 east, Fourth Principal Meridian, Forest County, Wisconsin.

The original Government subdivision survey of this township was made in 1859.

The U.S. Government acquired title to lands in section 13 in 1935, and in 1940.

The corner positions recovered, restored, and established by this survey are marked and referenced by the monument described in the map legend.

The bearings between corner positions are true bearings as determined by reference to solar observations. The accuracy of the perimeter traverse control for corner restoration and establishment was 0.6 feet in latitude and 0.4 foot in departure.

The field survey notes and a copy of the plat of survey are on file in the Forest Supervisor's office at Rhineland, Wisconsin.

Corners Recovered1. Section Corner to Sections 11-12-13-14

Corner position documented on corner certificate No. 105095 filed in the County records on April 5, 1974. Corner was recovered from the evidence of the original Government Survey.

Corner references established in 1974:

Spruce	4"	N75°E	1.68 feet
Spruce	9"	S 6°E	13.61 feet
Sign Post		Southeast	1.0 feet

2. Section Corner to Sections 13-14-23-24.

Corner position documented on corner certificate No. 111735 filed in the county records on June 27, 1977. Corner was recovered from the evidence of the original Government Survey.

Corner references established in 1977:

Southeast corner of house north of road bears N61°W 173.30 feet

Southeast corner of metal barn bears S53°W

Set spike in NW side elm tree at 50.16 feet from monument.

3. Section Corner to Sections 13-18-19-24.

Corner position recovered as being a 3/8 inch diameter iron pin in center line of Highway 32 and center of road west.

Corner references:

Reference Monument		N50°W	75.00 feet
Maple	8"	N26°E	13.60 feet
Basswood	10"	N51°W	12.72 feet
Sign Post		West	0.50 feet

Corners Restored1. Section Corner to Sections 7-12-13-18, Rs. 14-15E

Corner position restored on line between the northeast corner of section 12 and the southeast corner of section 13 using the distances as recorded on the Highway 32 survey of 1923 and 1939.

Corner references:

Reference Monument	N89°18.3W	91.0 feet
Maple 7"	N19°E	27.98 feet
Maple 6"	N55°W	11.37 feet

2. Quarter Corner to Sections 12-13

Corner position restored at midpoint and on line between the northwest corner and the northeast corner of section 13.

Corner references:

Maple 6"	S88°E	19.51 feet
Maple 9"	N29°W	16.27 feet
Sign Post	Northwest	0.50 feet

3. Quarter Corner to Sections 13-18, Rs. 14-15E

Corner position restored at midpoint and on line between the northeast corner and the southeast corner of Section 13.

Corner references:

Reference Monument	N89°00.3'W.	98.00 feet
Maple 5"	N47°E	18.35 feet
Maple 12"	S66°W	3.66 feet
Sign Post	Southwest	0.50 feet

4. Quarter Corner to Sections 13-24.

Corner position restored at midpoint and on line between the southeast corner and the southwest corner of Section 13.

Corner references:

Maple 14"	N10°W	34.27 feet
Maple 8"	N23°E	41.55 feet

5. Quarter Corner to Sections 13-14.

Corner position restored at midpoint and on line between the southwest corner and the northwest corner of Section 13.

Corner references:

Birch 11"	N50°W	6.19 feet
Spruce 10"	S50°E	17.52 feet
Sign Post		0.52 feet

Corners Established1. Center Quarter Corner

Corner position established at the intersection of the straight lines between opposing quarter corners on the perimeter of Section 13.

Corner references:

Maple 9"	S24°W	21.84 feet
Maple 8"	N52°W	19.12 feet
Sign Post	Southwest	0.50 feet

2. East Sixteenth Corner to Sections 12-13.

Corner position established at midpoint and on line between northeast corner and north quarter of Section 13.

Corner references:

Maple 8"	S9°E	13.45 feet
Maple 7"	N36°W	2.65 feet
Sign Post	Southwest	0.50 feet

3. West Sixteenth Corner to Sections 13-24.

Corner position established at midpoint and on line between southwest corner and south quarter corner of section 13.

Corner references:

Maple 12"	N 2°W	44.62 feet
Maple 13"	N52°E	40.75 feet

4. South Sixteenth Corner to Sections 13-14.

Corner position established at midpoint and on line between southwest corner and west quarter corner of section 13.

Corner references:

Maple 16"	N32°E	16.13 feet
Maple 18"	N89°W	13.87 feet
Sign Post	West	0.50 feet

5. South-South Sixty fourth Corner to Sections 13-14.

Corner position established at midpoint and on line between southwest corner and south sixteenth corner of section 13.

Corner references:

Cherry 7"	S30°W	10.04 feet
Cherry 9"	N39°W	9.78 feet
Sign Post	West	0.50 feet

6. North Sixteenth Corner to Sections 13-18, Rs. 14-15E.

Corner position established at midpoint and on line between northeast corner and east quarter corner of section 13.

Corner references:

Reference Monument	N89°09.3'W	94.5 feet
Maple 7"	S45°W	16.04 feet
Spruce 10"	N39°W	31.30 feet
Sign Post	Northwest	0.50 feet

7. Center North Sixteenth Corner

Corner position established at midpoint and on line between center quarter corner and north quarter corner of section 13.

Corner references:

Maple 5"	N74°W	13.87 feet
Cherry 8"	S51°W	14.09 feet
Sign Post	Northwest	0.50 feet

8. Southwest Sixteenth Corner

Corner position established at intersection of straight lines between opposing sixteenth corner positions on the perimeter of the southwest quarter of section 13.

Corner references:

White Pine 27"	S80°E	27.48 feet
Sugar Maple 12"	N32°W	15.46 feet
Sign Post	Northwest	0.50 feet

Corners of Exception Parcel1. Southeast Corner:

Corner position marked by a 2 inch inside diameter, galvanized iron pipe, 3 feet long filled with concrete, with a brass cap stamped:

"Property Corner 1, T35N R14E, S13, 1980, S-1107"

Corner references:

No bearing trees available		
Sign Post	South	0.50 ft.

2. Southwest Corner:

Corner position marked by a 2 inch inside diameter galvanized iron pipe, 3 feet long filled with concrete, with a brass cap stamped:

"Property Corner 2, T35N R14E, S13, 1980, S-1107"

Corner References:

Cherry 8"	N35°W	29.68 feet
Balsam 9"	S74°W	19.89 feet
Sign Post	Southwest	0.50 feet

3. Northwest Corner:

Corner position marked by a 2 inch inside diameter galvanized iron pipe, 3 feet long filled with concrete, with a brass cap stamped:

"Property Corner 3, T35N R14E, S12, S13, 1980, S-1107"

Corner References:

White Spruce 8"	S45°W	29.20 feet
Cherry 6"	S88°W	35.37 feet
Sign Post	Northwest	1.0 feet

4. Northeast Corner:

Corner position marked by a 2 inch inside diameter galvanized iron pipe 3 feet long filled with concrete, with a brass cap stamped:

"Reference Monument, T35N, R14E, R15E, S7, S12, S13, S18, 1980, 91.0 ft., S01107"

Corner references:

Maple 7"	N19°E	27.98 feet
Maple 6"	N55°W	11.37 feet
Section Corner bears	S89°18.3'E	91.0 feet
Sign Post	North	0.50 feet

Sheet 7 of 7

SURVEYOR'S AFFIDAVIT

State of Wisconsin)
County of Forest) SS

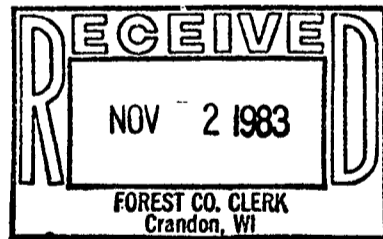
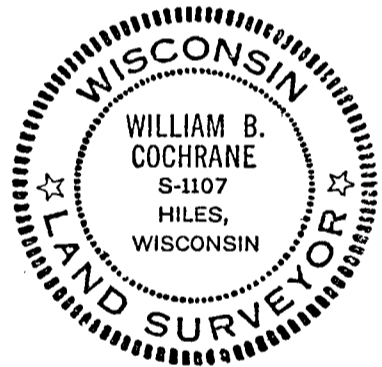
I, William B. Cochrane, Cadastral Surveyor, U.S. Forest Service, and a registered land surveyor in the State of Wisconsin, hereby certify that I have surveyed and subdivided Section 13, township 35 north, range 14 east, Fourth Principal Meridian, State of Wisconsin.

The plat maps and the notes herewith are a correct representation of the land surveyed and divided. I have surveyed and subdivided said section in accordance with the rules for the survey of the public lands and with the statutes of the state of Wisconsin.

William B. Cochrane

Cadastral Surveyor, U.S. Forest Service
R.L.S. State of Wisconsin
Certificate S-1107

Date of Survey: 1980



Dora C. James