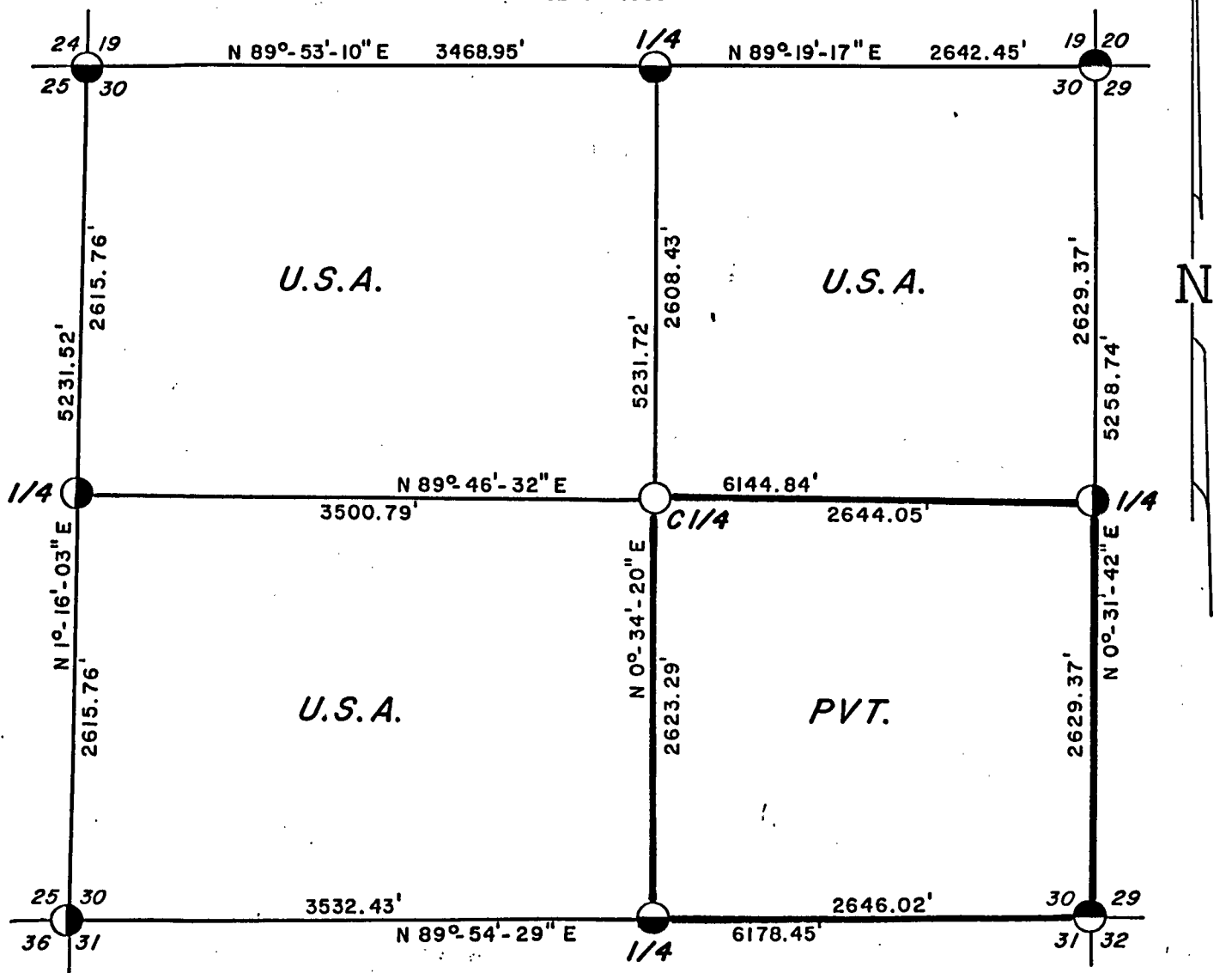
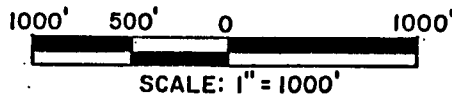


PLAT OF SURVEY U.S. GOVERNMENT LAND

BEING THE NW 1/4, THE SW 1/4 & THE NE 1/4, SECTION 30, T34N, R16E,
FOURTH PRINCIPAL MERIDIAN, FOREST COUNTY, STATE OF WISCONSIN.



Conversion Factors:
Feet to Meters- 0.304801
Meters to Feet- 3.280833

LEGEND

- 2"x30" aluminum pipe with 3" aluminum tablet.
- Boundary U.S. Government Land, marked and posted to U.S.F.S. standards.
- ◐ 2"x60" aluminum pipe with 3" aluminum tablet.
- ◑ 2"x36" aluminum pipe with 3" aluminum tablet.
- 2"x30" aluminum pipe with 3" aluminum tablet set this survey.

Stock No. 26273

SURVEY NOTES

This survey was made by Soder Surveying, pursuant to United States Department of Agriculture, Forest Service Contract #53-56A6-5-00095, True Line Survey for the purpose of marking and perpetuating the exterior and interior boundary lines of the U.S. Government land on the perimeter and within Section 30, T34N, R16E, Forest County, Wisconsin as shown on the plat herewith.

The U.S. Government lands in this section were aquired in 1934 and 1967.

The original Government subdivision survey of this township was made by James McBride in 1858.
South and West lines by Artemus Curtis in 1857.

The corner positions recovered, restofed, and established by this survey are marked by the monument described in the map legend.

The corner positions established were located to an accuracy of one part in 3000.

The bearings between corner positions are true bearings as determined by solar observations.

The field notes of this survey and a copy of this plat are on file in the Forest Supervisor's Office in Rhinelander, WI.

Corners Recovered

1. Section Corner to Sections 24, 19, 25 & 30, T34N, R16E
Document #127310 in Forest County Register of Deeds.
2. Section Corner to Sections 19, 20, 30 & 29, T34N, R16E
Document #127312 in Forest County Register of Deeds.
3. Section Corner to Sections 30, 29, 32 & 31, T34N, R16E
Document #127333 in Forest County Register of Deeds.
4. Section Corner to Sections 25, 30, 36 & 31, T34N, R16E
Document #127331 in Forest County Register of Deeds.
5. Quarter Corner to Sections 30 & 19, T34N, R16E
Document #127311 in Forest County Register of Deeds
6. Quarter Corner to Sections 30 & 29, T34N, R16E
Document #127325 in Forest County Register of Deeds

Corners Recovered Cont.

7. Quarter Corner to Sections 30 & 31, T34N, R16E
Document #127332 in Forest County Register of Deeds.
8. Quarter Corner to Sections 30 & 25, T34N, R16E
Document #127324 in Forest County Register of Deeds.

Corners Established

1. Center One-Quarter to Section 30, T34N, R16E
Corner established at the intersection of the North-South quarter line and the East-West quarter line to Section 30 and witnessed as follows:

Sugar Maple	11"	S 76° E	36.53 feet
Sugar Maple	13"	S 54° W	23.98 feet
Sugar Maple	18"	N 53° W	16.02 feet
Steel Sign Post		Northwest	1.75 feet

SURVEYOR'S AFFIDAVIT

State of Wisconsin)ss
County of Forest)

I, Kip W. Soder, registered land surveyor in the State of Wisconsin, hereby certify that I have run the boundary lines shown hereon and set the established corners in Section 30, Township 34 North, Range 16 East, Fourth Principal Meridian, Forest County, State of Wisconsin.

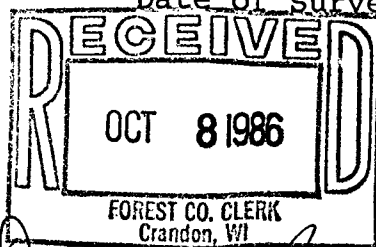
The plat map and the notes herewith are a correct representation of the land which was subdivided by the U.S. Forest Service Surveyor based on traverse work by a separate previous contract. The controlling corners were set and certified to by the U.S. Forest Service Surveyor. I have surveyed said boundary and set said established corners in accordance with the rules for survey of the public lands and with the Statutes of the State of Wisconsin.



Kip W. Soder

Kip W. Soder
R.L.S. State of Wisconsin
Certificate S-1731

Date of Survey: 1986

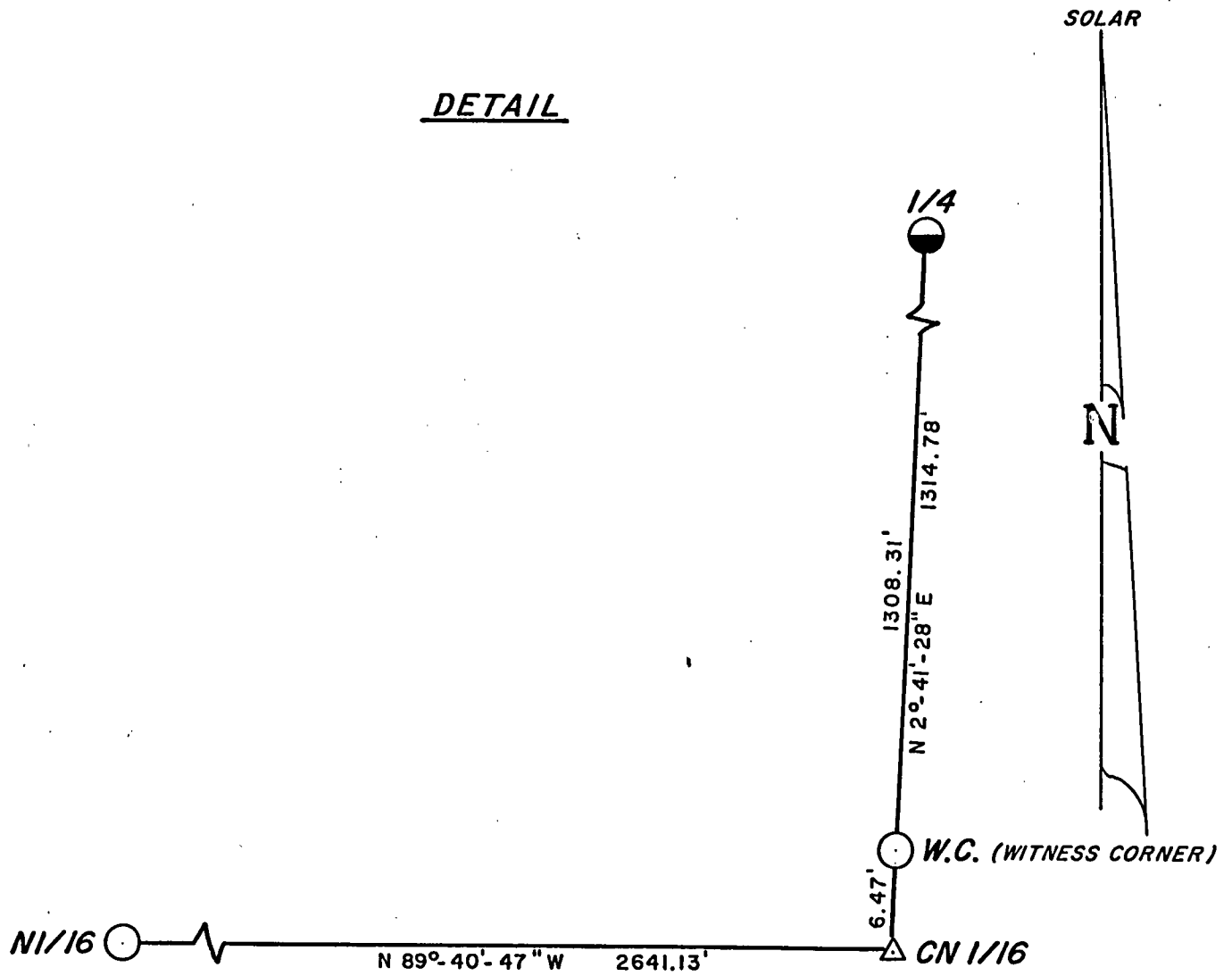


Plat Ready For Filing:




Dale R. Staeg
District Ranger

Dora C. James

DETAIL



-LEGEND-

-  2" X 30" ALUMINUM PIPE WITH 3" ALUMINUM TABLET.
-  2" X 30" ALUMINUM PIPE WITH 3" ALUMINUM TABLET SET THIS SURVEY.
-  SET 60 d NAIL

SCALE: 1" = 10'

SURVEY NOTES

This survey was made by Soder Surveying, pursuant to United States Department of Agriculture, Forest Service Contract #53-56A6-5-00095, True Line Survey for the purpose of marking and perpetuating the exterior and interior boundary lines of the U.S. Government land on the perimeter and within Section 32, T34N, R16E, Forest County, Wisconsin as shown on the plat herewith.

The U.S. Government lands in this section were acquired in 1934 and 1967.

The original Government subdivision survey of this township was made by James McBride in 1858.
South and West lines by Artemus Curtis in 1857.

The corner positions recovered, restored, and established by this survey are marked by the monument described in the map legend.

The corner positions established were located to an accuracy of one part in 3000.

The bearings between corner positions are true bearings as determined by solar observations.

The field notes of this survey and a copy of this plat are on file in the Forest Supervisor's Office in Rhineland, WI.

Corners Recovered

1. Section Corner to Sections 30, 29, 31 & 32, T34N, R16E
Document #127333 in Forest County Register of Deeds.
2. Section Corner to Sections 29, 28, 32 & 33, T34N, R16E
Document #127335 in Forest County Register of Deeds.
3. Section Corner to Sections 32, 33, 5 & 4, T34N, R16E
Document #127354 in Forest County Register of Deeds.
4. Section Corner to Sections 31, 32, 6 & 5, T34N, R16E
Document #127352 in Forest County Register of Deeds.
5. Quarter Corner to Sections 29 & 32, T34N, R16E
Document #127334 in Forest County Register of Deeds.
6. Quarter Corner to Sections 32 & 33, T34N, R16E
Document #127344 in Forest County Register of Deeds.

Corners Recovered Cont.

7. Quarter Corner to Sections 32 & 5, T34N, R16E
Document #127353 in Forest County Register of Deeds.
8. Quarter Corner to Sections 31 & 32, T34N, R16E
Document #127343 in Forest County Register of Deeds.

Corners Established

1. North One-Sixteenth Corner to Sections 31 & 32, T34N, R16E
Corner established proportionately and on line between the West one-quarter corner and the Northwest corner of Section 32.

Corner References:

Sugar Maple	5"	N 13° E	22.22 feet
Sugar Maple	7"	S 4° W	13.80 feet
Steel Sign Post		East	2.34 feet

2. Witness Corner to Center North One-Sixteenth Corner to Section 32, T34N, R16E

Corner set on line between the North one-quarter and the true Center North One-Sixteenth position of Section 32.

Corner References:

Sugar Maple	10"	N 12° E	42.75 feet
Cherry	7"	S 76° W	47.14 feet
Steel Sign Post		South	4.92 feet

SURVEYOR'S AFFIDAVIT

State of Wisconsin) ss
County of Forest)

I, Kip W. Soder, registered land surveyor in the State of Wisconsin, hereby certify that I have run the boundary lines shown hereon and set the established corners in Section 32, Township 34 North, Range 16 East, Fourth Principal Meridian, Forest County, State of Wisconsin.

The plat map and the notes herewith are a correct representation of the land which was subdivided by the U.S. Forest Service Surveyor based on traverse work by a separate previous contract. The controlling corners were set and certified to by the U.S. Forest Service Surveyor. I have surveyed said boundary and set said established corners in accordance with the rules for the survey of the public lands and with the Statutes of the State of Wisconsin.



Kip W. Soder

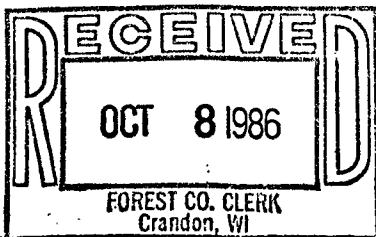
Kip W. Soder
R.L.S. State of Wisconsin
Certificate S-1731

Date of Survey: 1986

Plat Ready For Filing:

Dale S. Staeger

District Ranger



Dora C. James