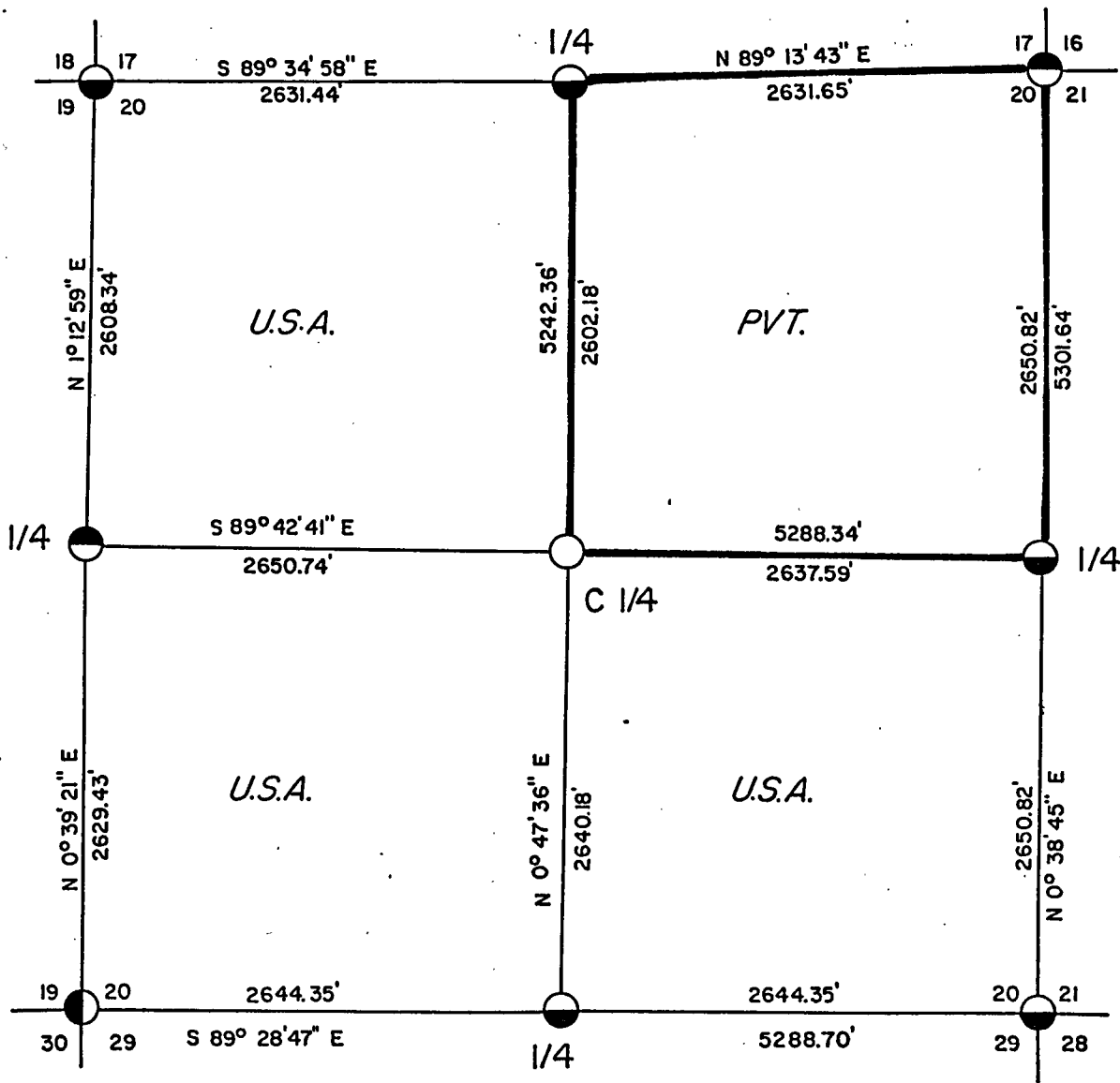
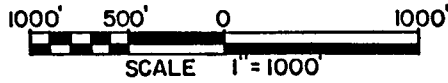


C.C.

PLAT OF SURVEY U.S. GOVERNMENT LAND

BEING THE NW 1/4, THE SW 1/4 AND THE SE 1/4, SECTION 20, T34N, R16E,
FOURTH PRINCIPAL MERIDIAN, FOREST COUNTY, WISCONSIN.



Conversion Factors:
Feet to Meters- 0.304801
Meters to Feet- 3.280833

LEGEND

- 2"x36" aluminum pipe with 3" aluminum tablet.
- ◐ 2"x60" aluminum pipe with 3" aluminum tablet.
- ◑ 2"x30" aluminum pipe with 3" aluminum tablet.
- 2"x30" aluminum pipe with 3" aluminum tablet set this survey.
- Boundary U.S. Government Land, marked and posted to U.S.F.S standards.

Stock No. 26273

SURVEY NOTES

This survey was made by Robinson & Associates, Inc. pursuant to United States Department of Agriculture, Forest Service Contract #53-56A6-5-00095, True Line Survey for the purpose of marking and perpetuating the exterior and interior boundary lines of the U.S. Government land on the perimeter and within Section 20, T34N, R16E, Forest County, Wisconsin as shown on the plat herewith.

The U.S. Government lands in this section were acquired in 1934.

The original Government subdivision survey of this township was made in 1857.

The corner positions recovered, restored, and established by this survey are marked by the monument described in the map legend.

The corner positions established were located to an accuracy of one part in 3000.

The bearings between corner positions are true bearings as determined by solar observations.

The field notes of this survey and a copy of this plat are on file in the Forest Supervisor's Office in Rhinelander, Wisconsin.

CORNERS RECOVERED

1. Section Corner to Sections 17, 18, 19 and 20, T34N, R16E
Document #127294 in Forest County Register of Deeds.
2. Section Corner to Sections 19, 20, 29 and 30, T34N, R16E
Document #127312 in Forest County Register of Deeds.
3. Section Corner to Sections 20, 21, 29 and 28, T34N, R16E
Document #127314 in Forest County Register of Deeds.
4. Section Corner to Sections 16, 17, 20 and 21, T34N, R16E
Document #127296 in Forest County Register of Deeds.
5. Quarter Corner to Sections 17 and 20, T34N, R16E
Document #127295 in Forest County Register of Deeds.
6. Quarter Corner to Sections 19 and 20, T34N, R16E
Document #127304 in Forest County Register of Deeds.
7. Quarter Corner to Sections 20 and 29, T34N, R16E
Document #127313 in Forest County Register of Deeds.
8. Quarter Corner to Sections 20 and 21, T34N, R16E
Document #127305 in Forest County Register of Deeds.

Stock No. 26273

CORNERS ESTABLISHED

1. Center Quarter Corner to Section 20, T34N, R16E
 Corner established at the intersection of the North-South and East-West one-quarter lines of Section 20.

Corner References:

Sugar Maple	10"	S38°W	41.10 feet
Basswood	8"	N59°E	44.83 feet
Steel Sign Post		West	0.83 feet

SURVEYOR'S AFFIDAVIT

State of Wisconsin)
 County of Forest) ss

I, Robert H. Winat, registered land surveyor in the State of Wisconsin, hereby certify that I have run the boundary lines shown hereon and set the established corners in Section 20, Township 34 North, Range 16 East, Fourth Principal Meridian, Forest County, State of Wisconsin.

The plat map and the notes herewith are a correct representation of the land which was subdivided by the U.S. Forest Service Surveyor based on traverse work by a separate previous contract. The controlling corners were set and certified to by the U.S. Forest Service Surveyor. I have surveyed said boundary and set said established corners in accordance with the rules for survey of the public lands and with the statutes of the State of Wisconsin.

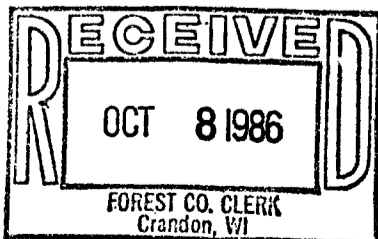


Robert H. Winat
 Robert H. Winat
 R.L.S. State of Wisconsin
 Certificate S-1040

Date of Survey: 1985

Plat ready for filing

Dale S. Stage
 District Ranger



Dora C. James