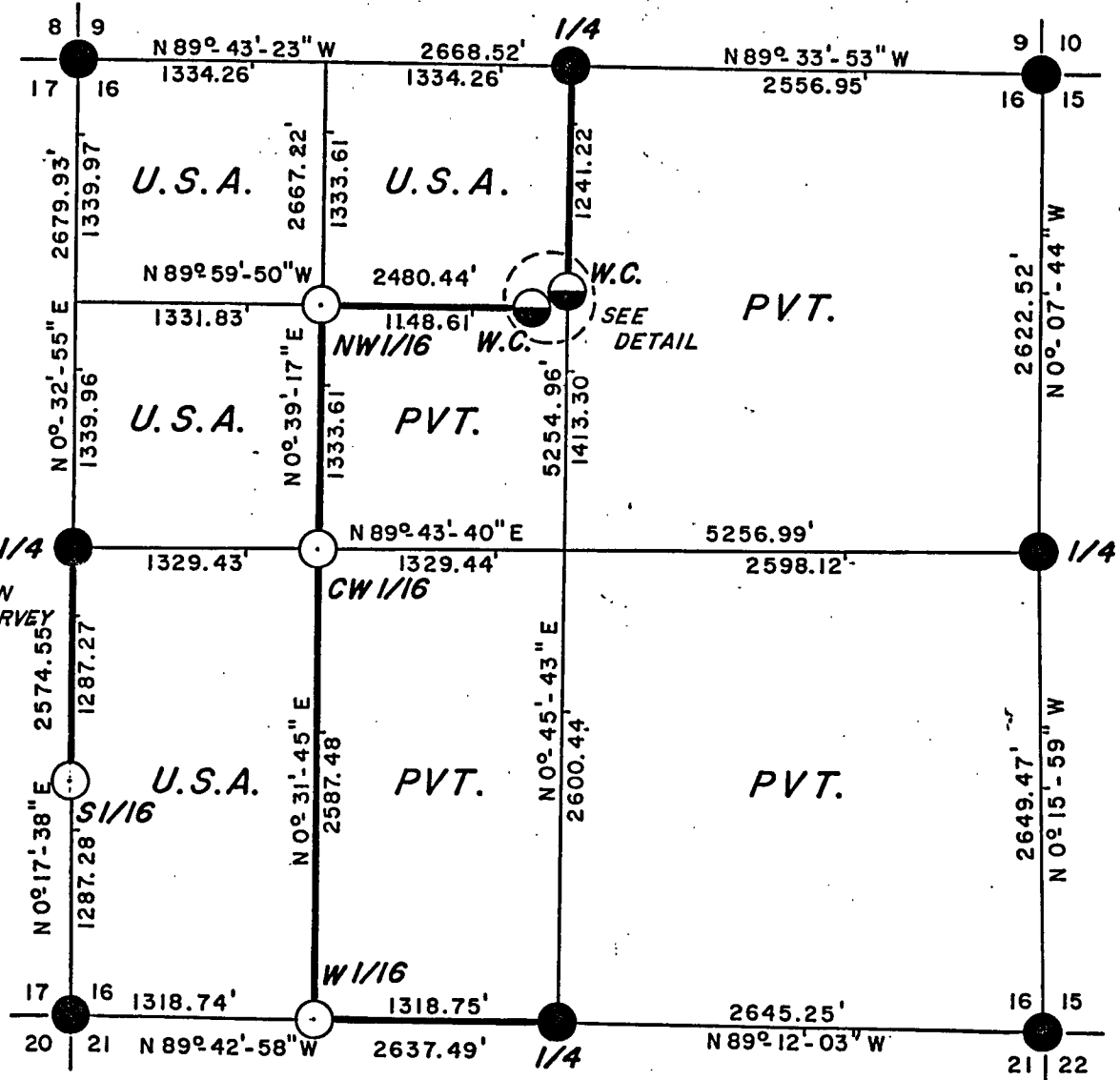
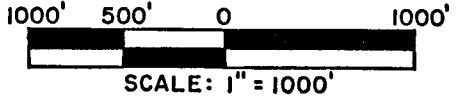


County Clerk

# PLAT OF SURVEY U.S. GOVERNMENT LAND

Sheet 1 of 5

BEING THE NW 1/4, NE 1/4 AND THE SW 1/4 OF THE NW 1/4 & THE W 1/2 OF THE SW 1/4, SECTION 16, TOWNSHIP 34 NORTH, RANGE 16 EAST, FOURTH PRINCIPAL MERIDIAN, FOREST COUNTY, WISCONSIN.



NOTE: LINE RUN IN PREVIOUS SURVEY OF SECTION 17 FOR U.S.F.S.

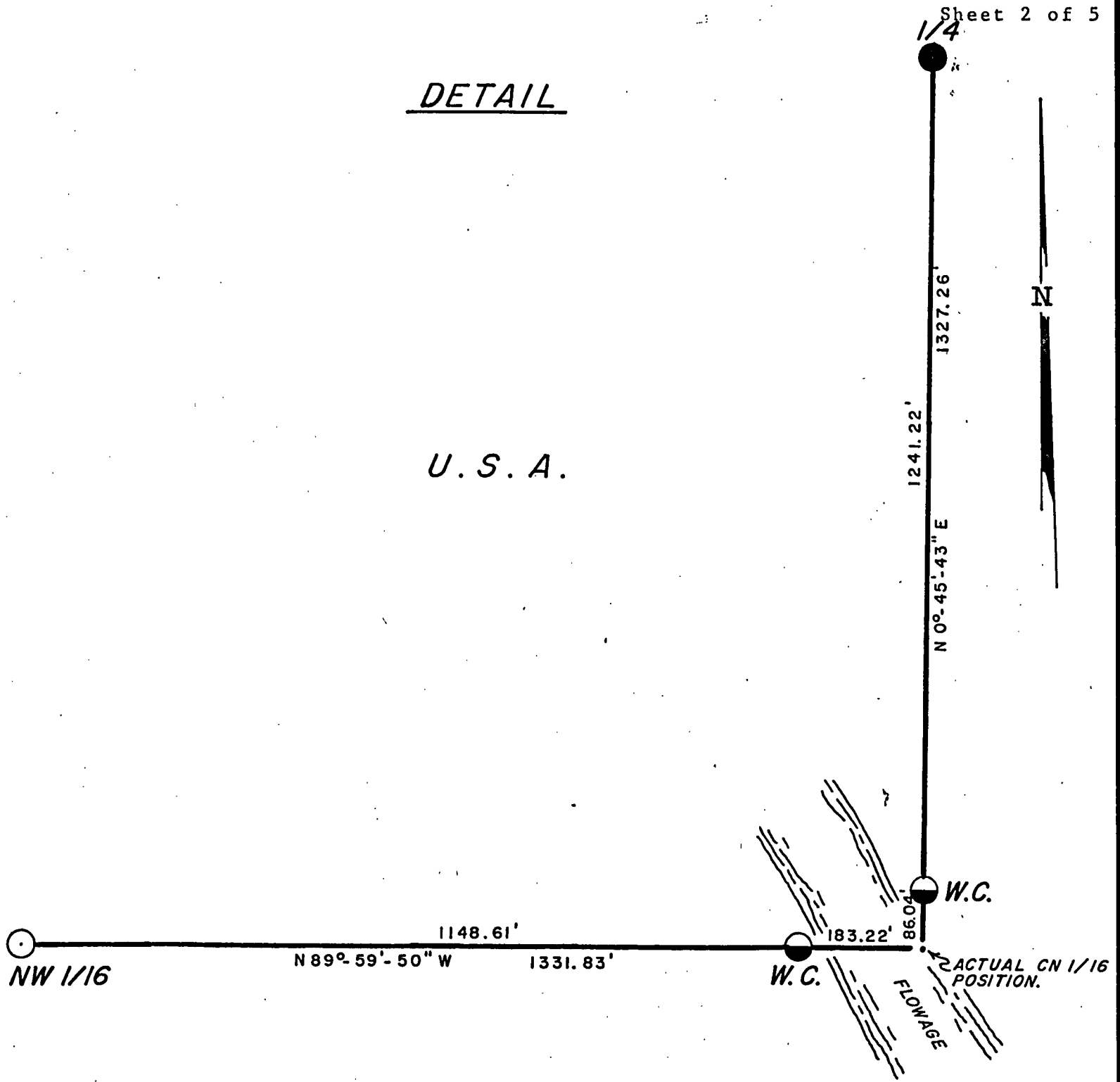
### — LEGEND —

- U.S.F.S. ALUMINUM PIPE WITH 3" ALUM. TABLET
- 2-1/2" X 36" ALUMINUM PIPE WITH 3" ALUMINUM TABLET SET THIS SURVEY.
- 2-1/2" X 60" ALUMINUM PIPE WITH 3" ALUMINUM TABLET SET THIS SURVEY.
- BOUNDARY U.S. GOVERNMENT LAND, MARKED & POSTED TO U.S.F.S. STANDARDS.

CONVERSION FACTORS:  
 FEET TO METERS .304801  
 METERS TO FEET 3.280833

DETAIL

U. S. A.



—LEGEND—

- U.S.F.S. ALUMINUM PIPE WITH 3" ALUMINUM TABLET.
- 2-1/2" X 36" ALUMINUM PIPE WITH 3" ALUM. TABLET SET THIS SURVEY.
- ◐ 2-1/2" X 60" ALUMINUM PIPE WITH 3" ALUM. TABLET SET THIS SURVEY.

SCALE: 1" = 200'

SURVEY NOTES

This survey was made by Soder Surveying, pursuant to United States Department of Agriculture, Forest Service Contract #53-56A6-5-00095, True Line Survey for the purpose of marking and perpetuating the exterior and interior boundary lines of the U.S. Government land on the perimeter and within Section 16, T34N, R16E, Forest County, Wisconsin as shown on the plat herewith.

The U.S. Government lands in this section were acquired in 1934 and 1967.

The original Government subdivision survey of this township was made by James McBride in 1858.

South and West lines by Artemus Curtis in 1857.

The corner positions recovered, restored, and established by this survey are marked by the monument described in the map legend.

The corner positions established were located to an accuracy of one part in 3000.

The bearings between corner positions are true bearings as determined by solar observations.

The field notes of this survey and a copy of this plat are on file in the Forest Supervisor's Office in Rhinelander, WI.

Corners Recovered

1. Section Corner to Sections 8, 9, 17 & 16, T34N, R16E  
Document #127276 in Forest County Register of Deeds.
2. Section Corner to Sections 9, 10, 16 & 15, T34N, R16E  
Document #127278 in Forest County Register of Deeds.
3. Section Corner to Sections 16, 15, 21 & 22, T34N, R16E  
Document #127298 in Forest County Register of Deeds.
4. Section Corner to Sections 17, 16, 20 & 21, T34N, R16E  
Document #127296 in Forest County Register of Deeds.
5. Quarter Corner to Sections 16 & 9, T34N, R16E  
Document #127277 in Forest County Register of Deeds.
6. Quarter Corner to Sections 16 & 15, T34N, R16E  
Document #127287 in Forest County Register of Deeds.
7. Quarter Corner to Sections 16 & 21, T34N, R16E  
Document #127297 in Forest County Register of Deeds.
8. Quarter Corner to Sections 16 & 17, T34N, R16E  
Document #127286 in Forest County Register of Deeds.

CORNERS ESTABLISHED

1. West One-Sixteenth to Sections 16 & 21, T34N, R16E  
 Corner established proportionately and on line between the South one-quarter and the Southwest section corner.

Sugar Maple	11"	N 80° E	40.30 Feet
Sugar Maple	9"	N 39° W	25.15 Feet
Steel Sign Post		North	1.94 Feet

2. Center West One-Sixteenth Corner to Section 16, T34N, R16E  
 Corner established proportionately and on line between the center one-quarter corner and the West one-quarter corner of Section 16 and witnessed as follows:

Basswood	8"	N 1° W	63.26 Feet
Rock Elm	8"	N 36° E	20.54 Feet
Aspen	7"	S 71° E	20.97 Feet
Steel Sign Post		North	1.17 Feet

3. Northwest One-Sixteenth Corner to Section 16, T34N, R16E  
 Corner established at the intersection of the North and West one-sixteenth lines of Section 16 and witnessed as follows:

Basswood	7"	N 46° W	22.07 Feet
Basswood	5"	N 85° E	24.88 Feet
Steel Sign Post		East	1.12 Feet

4. Witness Corner to Center North One-Sixteenth Corner to Section 16, T34N, R16E  
 Corner set on line between the Northwest one-sixteenth corner and the true center North one-sixteenth position of Section 16, T34N, R16E and witnessed as follows:

No live trees available			
Steel Sign Post		West	1.92 Feet
Steel Sign Post		East	2.67 Feet

5. Witness Corner to Center North One-Sixteenth Corner to Section 16, T34N, R16E  
 Corner set on line between the North one-quarter corner and the true center North one-sixteenth position of section 16 and witnessed as follows:

No live trees available			
Steel Sign Post		North	1.92 Feet
Steel Sign Post		South	2.08 Feet

SURVEYOR'S AFFIDAVIT

State of Wisconsin )  
County of Forest )<sup>ss</sup>

I, Kip W. Soder, registered land surveyor in the State of Wisconsin, hereby certify that I have run the boundry lines shown hereon and set the established corners in Section 16, Township 34 North, Range 16 East, Fourth Principal Meridian, Forest County, State of Wisconsin.

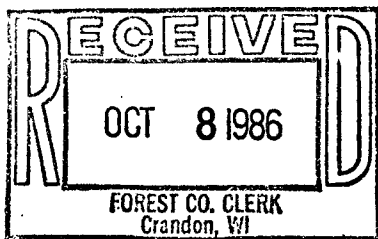
The plat map and the notes herwith are a correct representation of the land which was subdivided by the U.S. Forest Service Surveyor based on traverse work by a sepearte previous contract. The controlling corners were set and certified to by the U.S. Forest Service Surveyor. I have surveyed said boundary and set said established corners in accordance with the rules for survey of the public lands and with the Statutes of the State of Wisconsin.



*Kip W. Soder*  
Kip W. Soder  
R.L.S State of Wisconsin  
Certificate S-1731

Date of Survey: 1986

Plat ready for filing *Dee K. Staege*  
District Ranger



*Dora C. James*