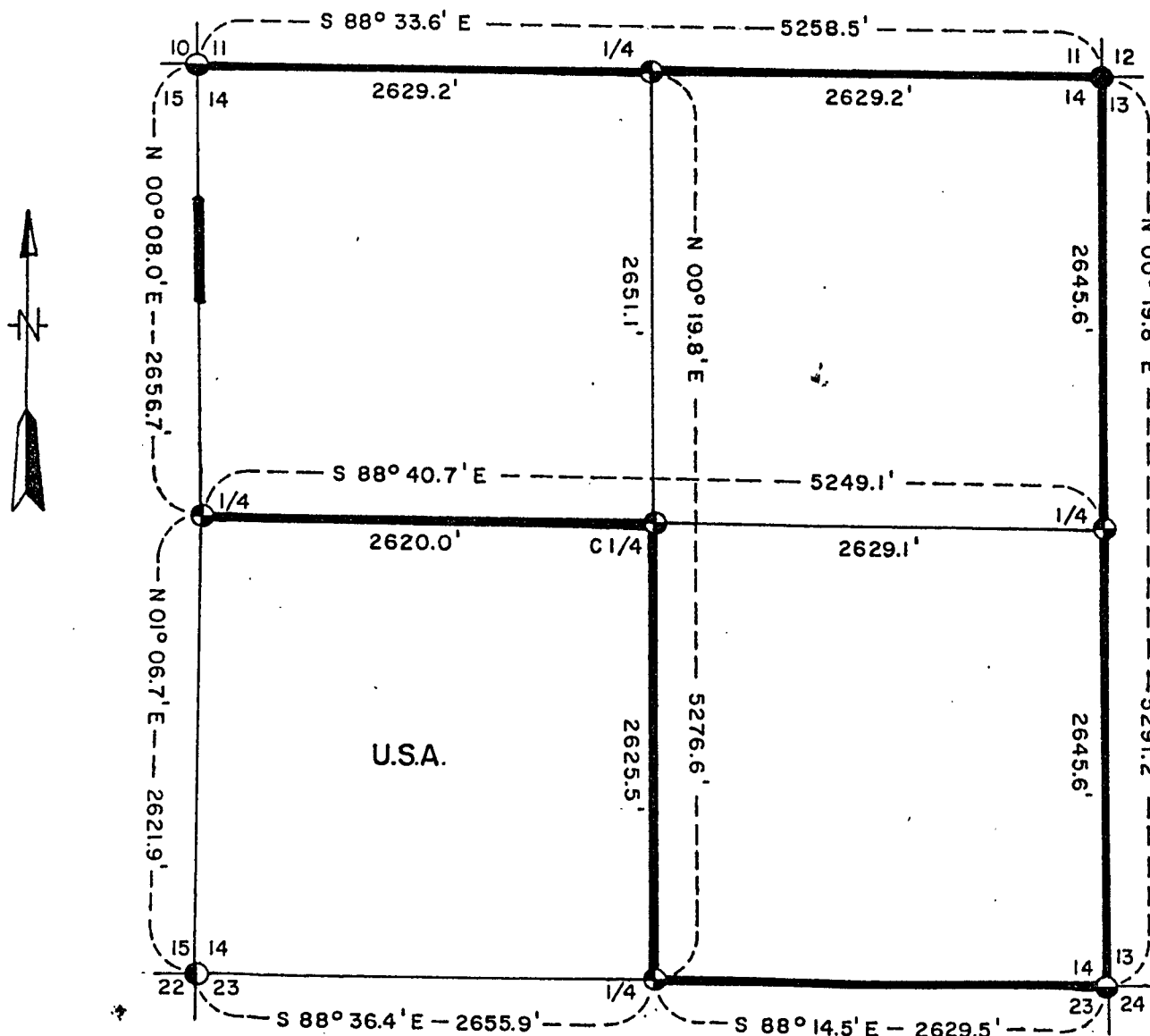


# PLAT OF SURVEY U.S. GOVERNMENT LAND

Being the SW 1/4 of Section 14  
Township 34 North, Range 16 East, Fourth Principal Meridian  
FOREST COUNTY, WISCONSIN



### LEGEND

- 2" Diameter Aluminum Monument - 36" Long
- 2" I.D. Iron Pipe 30" Long, Filled with Concrete, with Brass Cap
- 2" Diameter Aluminum Monument - 60" Long
- Railroad Spike in Centerline of Road
- Marked Boundary Line of U.S. Government Land

Conversion Factor:  
Feet to Meters - 0.304801  
Meters to Feet - 3.280833

Stock No. 26273

Sheet 2 of 4

SURVEY NOTES

This survey was made by the U. S. Department of Agriculture, Forest Service, for the purpose of restoring and establishing corners on the perimeter of Section 14, for establishing subdivisional corners within Section 14, and for locating and marking the boundaries of U. S. Government lands on their perimeter and within Section 14, Township 34 North, Range 16 East, Fourth Principal Meridian, Forest County, Wisconsin.

The U. S. Government lands in this section were acquired in 1934.

The original Government subdivision survey of this township was made in 1858 by James McBride.

The corner positions recovered, restored, and established by this survey are marked by the monument described in the map legend.

The corner positions established were located to an accuracy of one part in 3000.

The bearings between corner positions are true bearings as determined by solar observations.

The field notes of this survey and a copy of this plat are on file in the Forest Supervisor's Office at Rhinelander, Wisconsin.

CORNERS RECOVERED AND RESTORED1. Section Corner to Sections 10-11-14-15, T.34N., R.16E.

Corner position restored north-south by proportionate measure, as supported by truck trail survey of 1935.

Corner References:

Tamarack	5"	N.25°E.	88.68'
Aspen	6"	S.39°E.	68.32'
Tamarack	14"	S.38°W.	44.44'
White Spruce	7"	N.86°W.	36.73'
Steel Sign Post		Northwest	0.70'

2. Section Corner to Sections 11-12-13-14, T.34N., R.16E.

Corner monumented by Forest Service in September, 1979. Certificate on file, Document Number 118066.

3. Section Corner to Sections 13-14-23-24, T.34N., R.16E.

Corner monumented by Forest Service in October, 1980. Certificate on file, Document Number 119863.

4. Section Corner to Sections 14-15-22-23, T.34N., R.16E.

Corner position restored at the intersection of the centerlines of County Trunk "C" and Bay Shore Farm Road.

Corner References:

Power Pole #3416-14L9		N.54°E.	43.29'
Aspen	6"	S.52°E.	86.78'
USGS, Bench Mark #17W.R.M.		S.01°W.	52.44'
Reference Corner (2" x 36" Aluminum Monument)		N.35°W.	39.87'
Black Cherry	6"	S.38°W.	124.30'
Steel Sign Post		North of Reference Monument	1.00'

Stock No. 26273

Sheet 3 of 4

5. Quarter Corner to Sections 11 and 14, T.34N., R.16E.

Corner position was restored by single proportionate measure between the northeast and northwest section corners of Section 14.

Corner References:

Black Cherry	5"	N.25°E.	45.01'
Aspen	7"	S.47°E.	27.23'
White Spruce	6"	N.53°W.	55.44'
Steel Sign Post		East	2.10'

6. Quarter Corner to Sections 13 and 14, T.34N., R.16E.

Corner position was restored by single proportionate measure between the northeast and southeast section corners of Section 14.

Corner References:

Basswood	5"	S.02°E.	16.26'
Basswood	8"	S.42°W.	39.71'
Basswood	8"	N.66°W.	33.98'
Steel Sign Post		North	4.03'

7. Quarter Corner to Sections 14 and 23, T.34N., R.16E.

Corner position found marked by a fallen post with post hole, as supported by stump holes northeast and southwest at position of original bearing tree calls--plantation post and a camera post point near this corner.

Corner References:

Black Spruce	6"	S.54°E.	10.74'
White Spruce	8"	S.48°W.	6.81'
Red Pine	13"	N.58°W.	5.69'
Steel Sign Post		East	1.40'

8. Quarter Corner to Sections 14 and 15, T.34N., R.16E.

Corner position restored in centerline of Bay Shore Farm Road and fence line west.

Corner References:

Aspen	7"	N.64°E.	54.11'
Black Cherry	6"	S.54°E.	36.17'
Tamarack	3"	S.24°W.	104.44'
Steel Sign Post		West	20.00'

CORNERS ESTABLISHED1. Center Quarter to Section 14, T.34N., R.16E.

Corner position was established at the intersection of the one-quarter lines of Section 14.

Corner References:

White Birch	6"	S.82°E.	38.78'
Black Ash	8"	N.62°W.	35.10'
Boulder	10'x10'x5'	S.57°W.	31.14'
Steel Sign Post		West	1.20'

Stock No. 26273

SURVEYOR'S AFFIDAVIT

State of Wisconsin ]  
County of Forest ] SS

I, Milo E. Stefan, Cadastral Surveyor, U. S. Forest Service and a registered surveyor in the State of Wisconsin, hereby certify that I have surveyed and subdivided Section 14, Township 34 North, Range 16 East, Fourth Principal Meridian, State of Wisconsin.

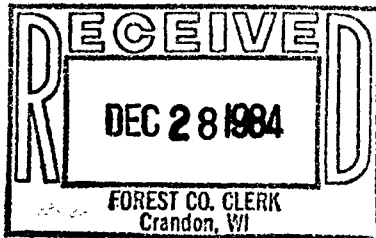
The plat map and the notes herewith are a correct representation of the land surveyed and divided. I have surveyed and subdivided said section in accordance with the rules for survey of the public lands and with the statutes of the State of Wisconsin.



*Milo E. Stefan*  
Cadastral Surveyor, U. S. Forest Service  
R.L.S., State of Wisconsin  
Certificate S-1558

Plat Ready For Filing: *Dale S. Sturge*  
District Ranger

Date of Survey: 1983



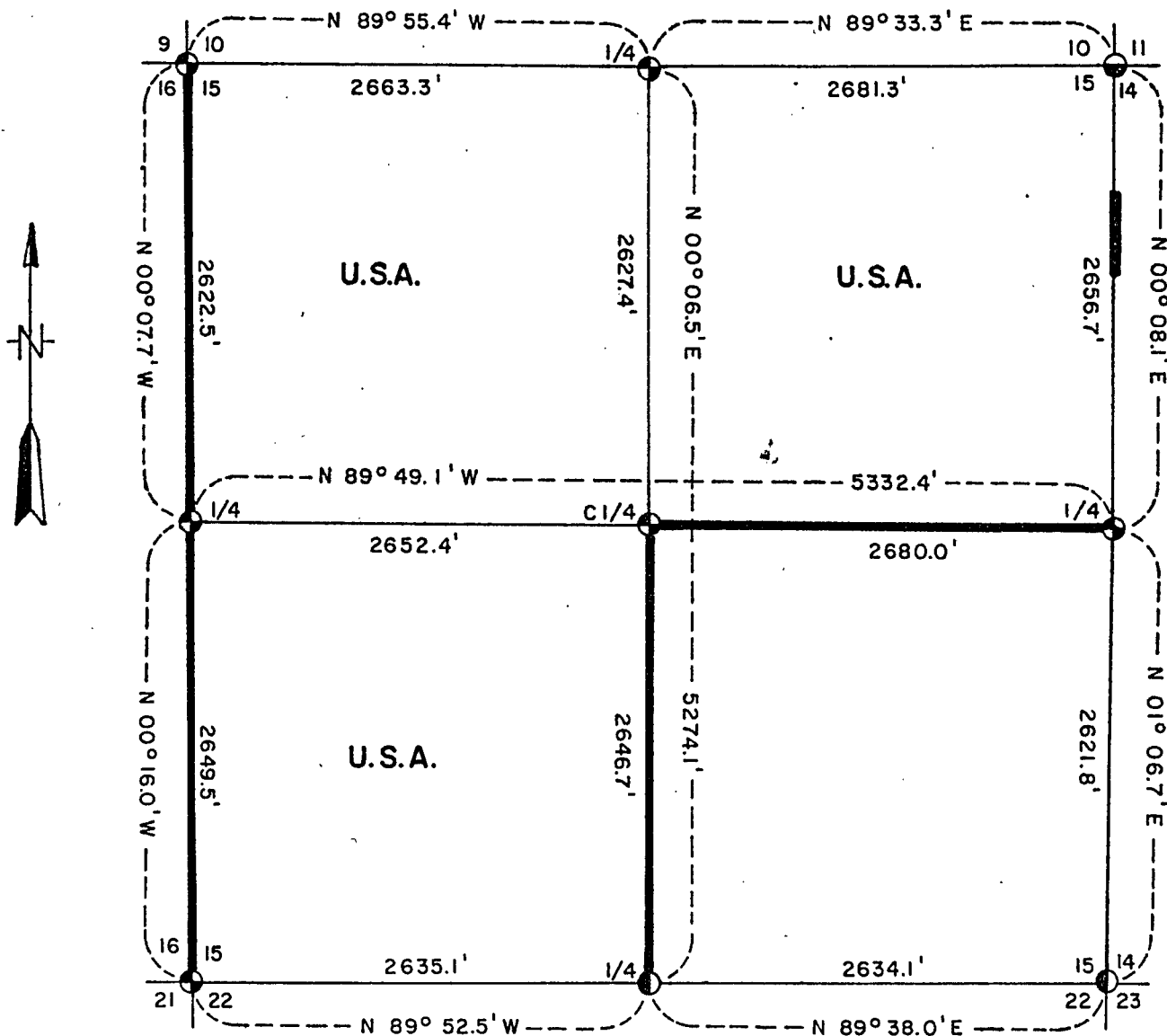
*Sallie L. Deer*  
Deputy Co. Clerk

Stock No. 26273

SHEET 1 OF 4

# PLAT OF SURVEY U.S. GOVERNMENT LAND

Being the NE1/4, SW1/4, and the NW1/4 of Section 15  
Township 34 North, Range 16 East, Fourth Principal Meridian  
FOREST COUNTY, WISCONSIN



## LEGEND

- ⊕ 2" Diameter Aluminum Monument - 36" Long
- Railroad Spike in Centerline of Road
- ⊙ 2" Diameter Aluminum Monument - 60" Long
- Marked Boundary Line of U.S. Government Land.

Conversion Factor:  
Feet to Meters = 0.304801  
Meters to Feet = 3.280833

Stock No. 26273

Sheet 2 of 4

SURVEY NOTES

This survey was made by the U. S. Department of Agriculture, Forest Service, for the purpose of restoring and establishing corners on the perimeter of Section 15, for establishing subdivisional corners within Section 15, and for locating and marking the boundaries of U. S. Government lands on their perimeter and within Section 15, Township 34 North, Range 16 East, Fourth Principal Meridian, Forest County, Wisconsin.

The U. S. Government lands in this section were acquired from 1934 to 1939.

The original Government subdivision survey of this township was made in 1858 by James McBride.

The corner positions recovered, restored, and established by this survey are marked by the monument described in the map legend.

The corner positions established were located to an accuracy of one part in 3000.

The bearings between corner positions are true bearings as determined by solar observations.

The field notes of this survey and a copy of this plat are on file in the Forest Supervisor's Office at Rhinelander, Wisconsin.

CORNERS RECOVERED AND RESTORED1. Section Corner to Sections 9-10-15-16, T.34N., R.16E.

Corner position found marked by fallen post and supported by remains of original BT, S.35°E., 11.2' and stump hole, N.34°E., 4.6'.

Corner References:

Sugar Maple	5"	S.72°E.	26.14'
Basswood	10"	S.15°E.	121.69'
Rock Elm	4"	S.53°W.	33.26'
Sugar Maple	6"	N.03°W.	66.97'
Steel Sign Post		South	1.10'

2. Section Corner to Sections 10-11-14-15, T.34N., R.16E.

Corner position restored north-south by proportionate measure, as supported by truck trail survey of 1935.

Corner References:

Tamarack	5"	N.25°E.	88.68'
Aspen	6"	S.39°E.	68.32'
Tamarack	14"	S.38°W.	44.44'
W. Spruce	7"	N.86°W.	36.73'
Steel Sign Post		Northwest	0.70'

3. Section Corner to Sections 14-15-22-23, T.34N., R.16E.

Corner position restored at the intersection of the centerlines of County Trunk "C" and the Bay Shore Farm Road--marked with a railroad spike.

Corner References:

Power Pole #3416-1469		N.54°E.	43.29'
Aspen 6"		S.52°E.	86.78'
USGS Bench Mark #17W.R.M.		S.01°W.	52.44'
Reference Corner (2" x 36" Aluminum Monument)		N.35°W.	39.87'
Black Cherry 6"		S.38°W.	124.30'
Steel Sign Post		North of Reference Monument	1.00'

Stock No. 26273

Sheet 3 of 4

4. Section Corner to Sections 15-16-21-22, T.34N., R.16E.  
 Corner position restored from black and white post from CCC era--placed by #341 Route Survey, which called corner 25' south of centerline and original 8" Cedar stump with axe face, S.73°W., 15.8'.

Corner References:

Cedar	11"	S.82°E.	80.58'
Cedar	5"	S.24°E.	44.97'
Balsam	7"	S.79°W.	17.91'
Tamarack	3"	N.14°W.	82.02'
Steel Sign Post		Northeast	1.20'

5. Quarter Corner to Sections 10 and 15, T.34N., R.16E.  
 Corner position found marked by 6" x 12" post point and supported by original White Pine stump remains, N.48°E., 8.58' and N.39°W., 15.2'.

Corner References:

Basswood	10"	N.39°E.	52.29'
White Birch	12"	N.11°W.	83.93'
White Pine Stump	30"	N.08°E.	25.64'
Steel Sign Post	7'	West	1.30'
Steel Sign Post	8'	South	1.30'

6. Quarter Corner to Sections 14 and 15, T.34N., R.16E.  
 Corner position was restored in the centerline of Bay Shore Farm Road and a fence line west.

Corner References:

Aspen	7"	N.64°E.	54.11'
Black Cherry	6"	S.54°E.	36.17'
Tamarack	3"	S.24°W.	104.44'
Steel Sign Post		West	20.00'

7. Quarter Corner to Sections 15 and 22, T.34N., R.16E.  
 Corner position restored from previous survey which called corner in centerline of County Highway "C" with fence north. This position fits within 1' of midpoint east and west.

Corner References:

Power Pole #3416-15R15		N.05°E.	29.51'
Reference Corner			
(2" x 36" Aluminum Monument)		N.51°E.	39.98'
Sugar Maple	10"	S.08°E.	37.62'
Sugar Maple	8"	S.64°W.	75.13'
Sugar Maple	6"	N.46°W.	84.08'
Steel Sign Post		North of Reference Corner	1.00'

8. Quarter Corner to Sections 15 and 16, T.34N., R.16E.  
 Corner position found marked by post point and fallen post supported by a conifer stump, S.39°W., 15.8'; swamp call south; and creek call north.

Corner References:

Black Cherry	7"	N.23°E.	47.86'
Double Spruce	4"	S.28°W.	54.94'
Black Cherry	7"	N.70°W.	22.17'
Steel Sign Post		South	2.10'
Beaver Flowage		East	15.00'

Stock No. 26273

Sheet 4 of 4

CORNERS ESTABLISHED1. Center One-Quarter Corner to Section 15, T.34N., R.16E.

We positioned this corner at the intersection of the quarter lines of Section 15.

Corner References:

Tamarack	12"	N.21°E.	86.48'
Tamarack	11"	N.88°E.	52.53'
Black Cherry	8"	S.81°W.	56.47'
Steel Sign Post		East	0.90'

SURVEYOR'S AFFIDAVIT

State of Wisconsin ]  
 County of Forest ] SS

I, Alan D. Harrison, Cadastral Surveyor, U. S. Forest Service and a registered surveyor in the State of Wisconsin, hereby certify that I have surveyed and subdivided Section 15, Township 34 North, Range 16 East, Fourth Principal Meridian, State of Wisconsin.

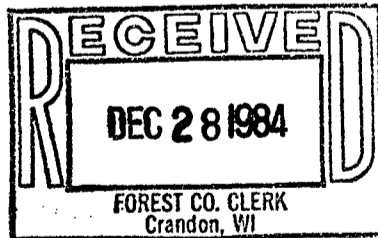
The plat map and the notes herewith are a correct representation of the land surveyed and divided. I have surveyed and subdivided said section in accordance with the rules for survey of the public lands and with the statutes of the State of Wisconsin.



*Alan D. Harrison*  
 Cadastral Surveyor, U. S. Forest Service  
 R.L.S., State of Wisconsin  
 Certificate S-1651

Plat Ready For Filing: *Dale S. Steeg*  
 District Ranger

Date of Survey: 1984



*Sallie L. Deer*  
 Deputy Co. Clerk