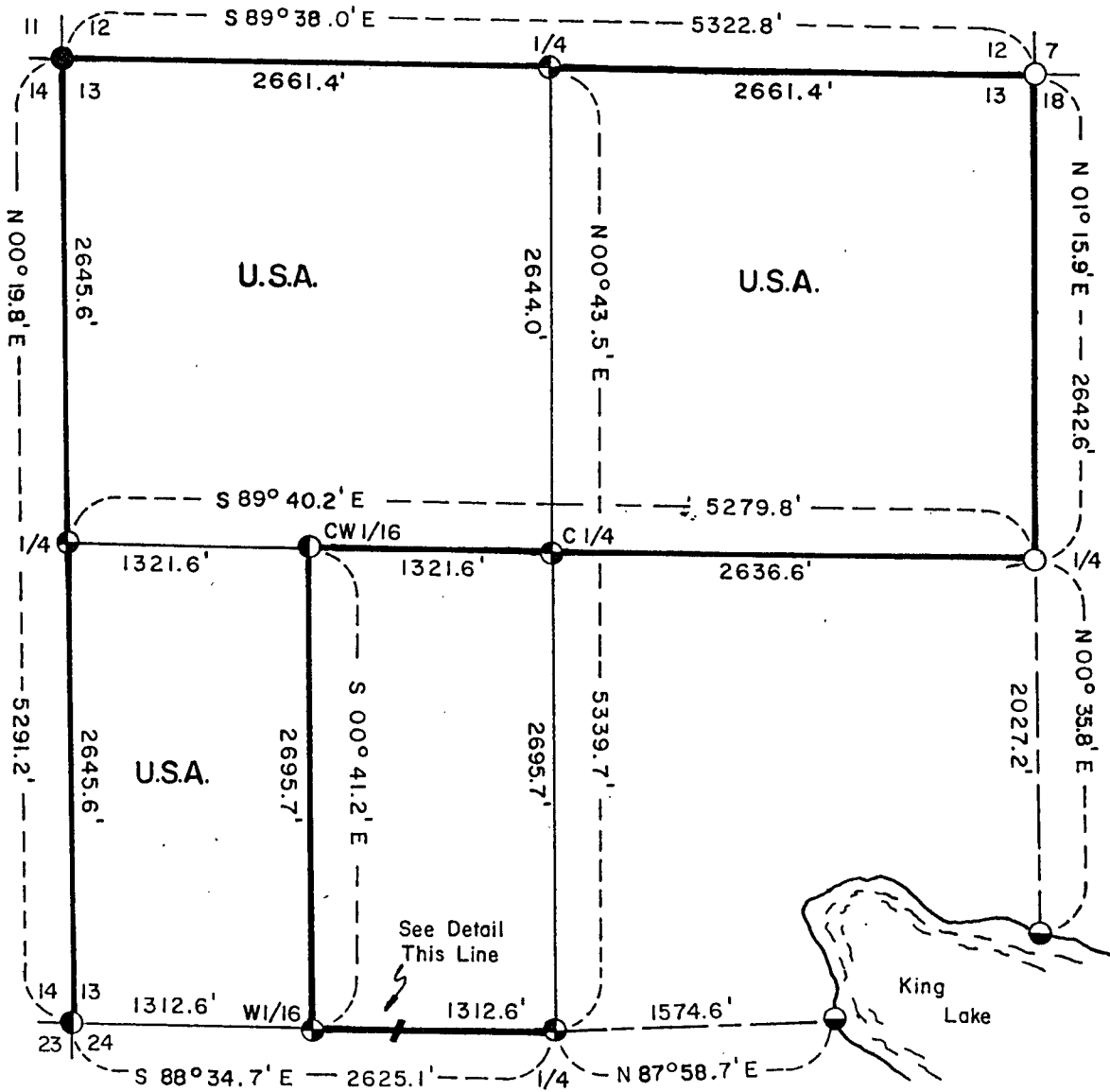
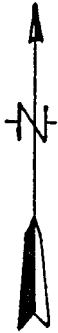
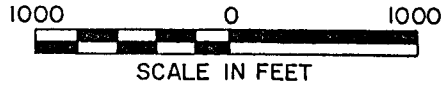


PLAT OF SURVEY U.S. GOVERNMENT LAND

Being the NE 1/4; W 1/2, SW 1/4; and the NW 1/4 Section 13
Township 34 North, Range 16 East, Fourth Principal Meridian
FOREST COUNTY, WISCONSIN



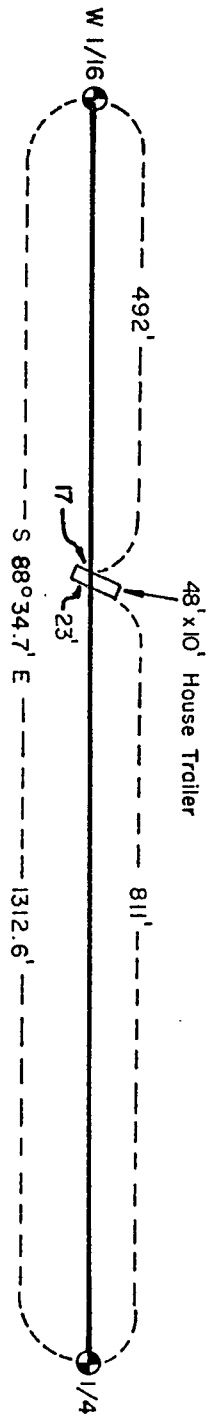
LEGEND

- Marinette County Monument, 4" Iron Pipe with Brass Cap.
- 2" Diameter Iron Pipe with Brass Cap, 36" Long.
- ⊕ 2" Diameter Aluminum Monument 36" Long.
- ⦿ 2" Diameter Aluminum Monument 60" Long.
- Iron Pipe Found.
- Marked Boundary Lines of U.S. Government Lands.

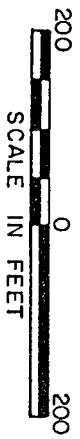
Stock No. 26273

DETAIL

SECTION 13



SECTION 24



Stock No. 26273

SURVEY NOTES

This survey was made by the U. S. Department of Agriculture, Forest Service, for the purpose of restoring and establishing corners on the perimeter of Section 13, for establishing subdivisional corners within Section 13, and for locating and marking the boundaries of U. S. Government land on their perimeter and within Section 13, Township 34 North, Range 16 East, Fourth Principal Meridian, Forest County, Wisconsin.

The U. S. Government lands in this section were acquired in April, 1934.

The original government survey of this township was made in 1839, 1857, and 1858. Subsequent survey by F. P. Gould in 1935 of east side of this section.

The corner positions recovered, restored, and established by this survey are marked by the monument described in the map legend.

The corner positions established were located to an accuracy of one part in 3000.

The bearings between corner positions are true bearings as determined by solar observations.

The field notes of this survey and a copy of this plat are on file in the Forest Supervisor's Office at Rhinelander, Wisconsin.

CORNERS RECOVERED AND RESTORED

1. Section Corner to Sections 13-14-23-24, T.34N., R.16E.
Corner position found marked by an iron pipe and old post points.
Corner References:

Cedar	10"	N62°W	29.77	feet
Tamarack	10"	N73°E	42.84	feet
Cedar	6"	S55°E	14.78	feet
Tamarack	8"	S25°W	17.39	feet
Steel Sign Post		North	2.72	feet
2. Section Corner to Sections 11-12-13-14, T.34N., R.16E.
See certificate on file--Document No. 118066.
3. Section Corner to Sections 12-13-7-18, T.34N., R.16-17E.
4" iron monument by F. P. Gould in 1935. Certificate on file--Document No. 109578.
4. Quarter Corner to Sections 13-24, T.34N., R.16E.
Corner position marked by 7/8" iron rod from which stump holes for original BTs.
Corner References:

Sugar	5"	N5°E	19.82	feet
Basswood	7"	S19°E	13.49	feet
Sugar	7"	S29°W	31.18	feet
Steel Sign Post		West	1.60	feet

Stock No. 26273

Page 4 of 5

5. Quarter Corner to Sections 13-14, T.34N., R.16E.
Corner position restored by single proportion measure between the section corners north and south.
Corner References:

Basswood	5"	S2°E	16.26	feet
Basswood	8"	S42°W	39.71	feet
Basswood	8"	N66°W	33.98	feet
Steel Sign Post		North	4.00	feet

6. Quarter Corner to Sections 12-13, T.34N., R.16E.
Corner position restored by single proportion measure between the section corners east and west.
Corner References:

W. Spruce	6"	N44°E	7.96	feet
R. Maple	6"	S20°E	12.90	feet
Basswood	6"	S47°W	8.36	feet
Steel Sign Post		West	1.50	feet

7. Quarter Corner to Sections 13-18, T.34N., R.16-17E.
4" iron monument set by F. P. Gould in 1935. Certificate on file--Document No. 109579.

CORNERS ESTABLISHED

1. Center Quarter to Section 13, T.34N., R.16E.
Corner established at the intersection of the one-quarter lines of Section 13.
Corner References:

Rock Elm	5"	S15°W	3.73	feet
Aspen	7"	S69°W	19.79	feet
Spruce	12"	N21°W	19.86	feet
Steel Sign Post		West	2.40	feet

2. West One-Sixteenth to Sections 13-24, T.34N., R.16E.
Corner established midpoint and on line between the southwest corner and the south quarter corner of Section 13.
Corner References:

Tamarack	8"	N59°E	20.71	feet
Spruce	12"	S7°E	12.01	feet
Spruce	8"	S43°W	3.56	feet
Steel Sign Post		North	3.00	feet

3. Center West One-Sixteenth to Section 13, T.34N., R.16E.
Corner established midpoint and on line between the center quarter corner and the west quarter corner of Section 13.
Corner References:

B. Cherry	8"	N19°W	92.34	feet
B. Cherry	6"	N4°E	98.78	feet
Steel Sign Post		East	1.60	feet

Stock No. 26273

SURVEYOR'S AFFIDAVIT

State of Wisconsin }
County of Forest } SS

I, Milo E. Stefan, Cadastral Surveyor, U. S. Forest Service and a registered surveyor in the State of Wisconsin, hereby certify that I have surveyed and subdivided Section 13, Township 34 North, Range 16 East, Fourth Principal Meridian, State of Wisconsin.

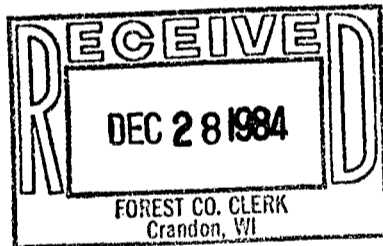
The plat map and the notes herewith are a correct representation of the land surveyed and divided. I have surveyed and subdivided said section in accordance with the rules for survey of the public lands and with the statutes of the State of Wisconsin.



Milo E. Stefan
Cadastral Surveyor, U. S. Forest Service
R.L.S., State of Wisconsin
Certificate S-1558

Plat Ready for Filing: *Dale S. Staege*
District Ranger

Date of Survey: 1981



Sallie L. Deer
Deputy Co. Clerk