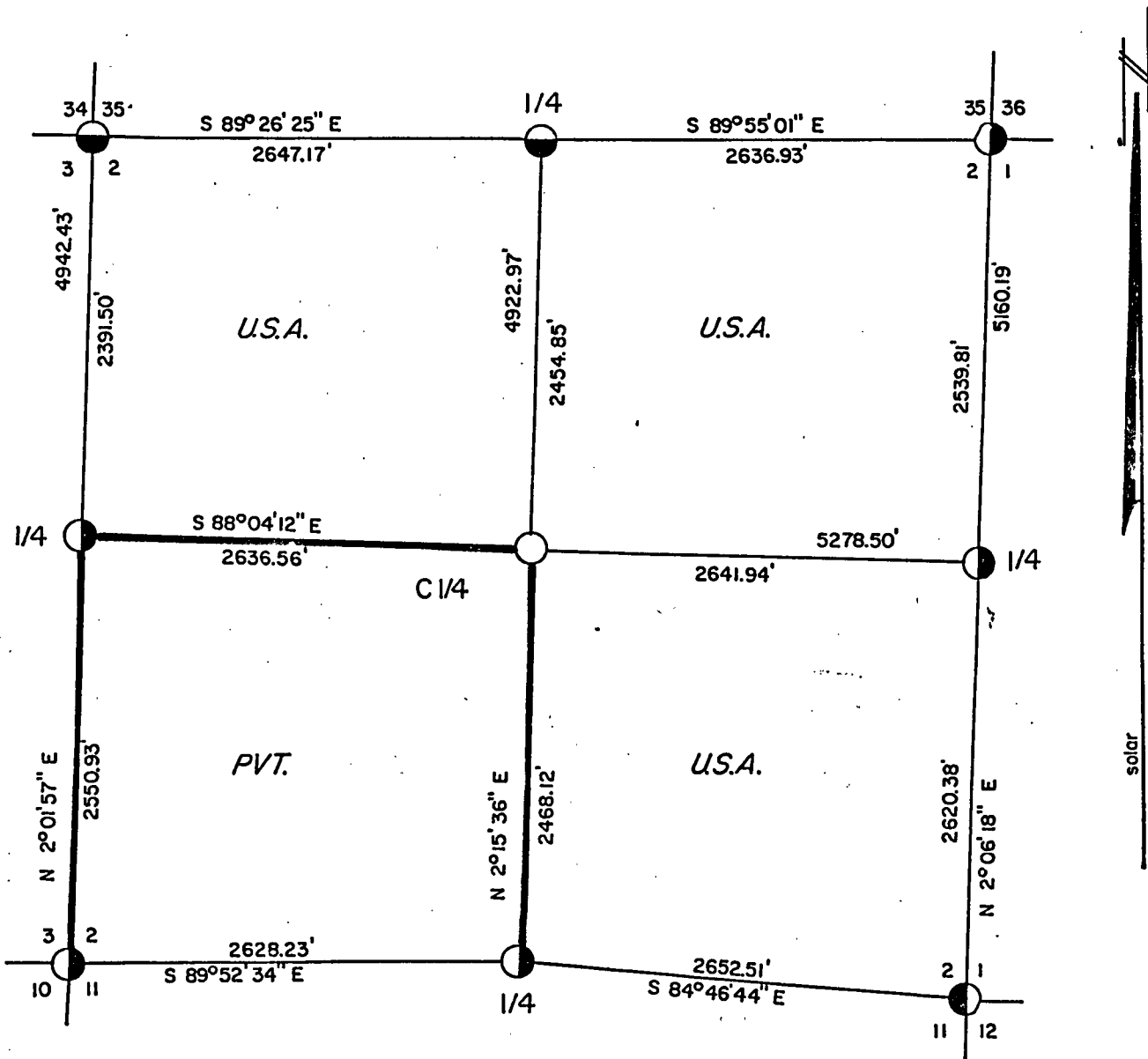
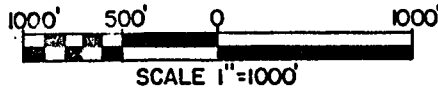


## PLAT OF SURVEY U.S. GOVERNMENT LAND

BEING THE NW 1/4, NE 1/4, AND SE 1/4 OF SECTION 2, T34N, R16E,  
 FOURTH PRINCIPAL MERIDIAN, FOREST COUNTY, WISCONSIN.



Conversion Factors:  
 Feet to Meters- 0.304801  
 Meters to Feet- 3.280833

**LEGEND**

- 2"x30" aluminum pipe with 3" aluminum tablet.
- 2"x36" aluminum pipe with 3" aluminum tablet.
- 2"x60" aluminum pipe with 3" aluminum tablet.
- 2"x36" galvanized pipe with brass cap.
- 2"x30" aluminum pipe with 3" aluminum tablet set this survey.

Boundary of U.S. Government Land, marked and posted to U.S.F.S. standards.

Stock No. 26273

SURVEY NOTES

This survey was made by Robinson & Associates, Inc. pursuant to United States Department of Agriculture, Forest Service Contract #53-56A6-5-00095, True Line Survey for the purpose of marking and perpetuating the exterior and interior boundary lines of the U.S. Government land on the perimeter and within Section 2, T34N, R16E, Forest County, Wisconsin as shown on the plat herewith.

The U.S. Government lands in this section were acquired in 1934-1964.

The original Government subdivision survey of this township was made in 1857.

The corner positions recovered, restored and established by this survey are marked by the monument described in the map legend.

The corner positions established were located to an accuracy of one part in 3000.

The bearings between corner positions are true bearings as determined by solar observations.

The field notes of this survey and a copy of this plat are on file in the Forest Supervisor's Office at Rhinelander, Wisconsin.

CORNERS RECOVERED

1. Section Corner to Sections 3 and 2, T34N, R16E  
Document #127244 in Forest County Register of Deeds.
2. Section Corner to Sections 1 and 2, T34N, R16E  
Document #127245 in Forest County Register of Deeds.
3. Section Corner to Sections 2, 3, 10 and 11, T34N, R16E  
Document #127259 in Forest County Register of Deeds.
4. Section Corner to Sections 1, 2, 11 and 12, T34N, R16E  
Document #127261 in Forest County Register of Deeds.
5. Quarter Corner to Section 2, T34N, R16E  
Document #124232 in Forest County Register of Deeds.
6. Quarter Corner to Sections 1 and 2, T34N, R16E  
Document #127252 in Forest County Register of Deeds.
7. Quarter Corner to Sections 2 and 11, T34N, R16E  
Document #127260 in Forest County Register of Deeds.
8. Quarter Corner to Sections 2 and 3, T34N, R16E  
Document #127251 in Forest County Register of Deeds.

Stock No. 26273

CORNER ESTABLISHED

1. Center Quarter Corner to Section 2, T34N, R16E  
Corner established at the intersection of the North-South and East-West one-quarter corners of Section 2.  
Corner References:

Maple	7"	N31°W	6.26 feet
Hemlock	10"	N72°E	6.77 feet
Steel Sign Post		South	1.00 feet

Stock No. 26273

SURVEYOR'S AFFIDAVIT

State of Wisconsin )  
County of Forest ) ss

I, Robert H. Winat, registered land surveyor in the State of Wisconsin, hereby certify that I have run the boundary lines shown hereon and set the established corners in Section 2, Township 34 North, Range 16 East, Fourth Principal Meridian, Forest County, State of Wisconsin.

The plat map and the notes herewith are a correct representation of the land which was subdivided by the U.S. Forest Service Surveyor based on traverse work by a separate previous contract. The controlling corners were set and certified to by the U.S. Forest Service Surveyor. I have surveyed said boundary and set said established corners in accordance with the rules for survey of the public lands and with the statutes of the State of Wisconsin.

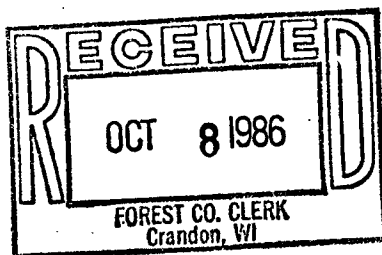


*Robert H. Winat*  
Robert H. Winat  
R.L.S. State of Wisconsin  
Certificate S-1040

Plat Ready For Filing:

Date of Survey: 1985

*Dale B. Stoege*  
District Ranger



*Dora C. James*