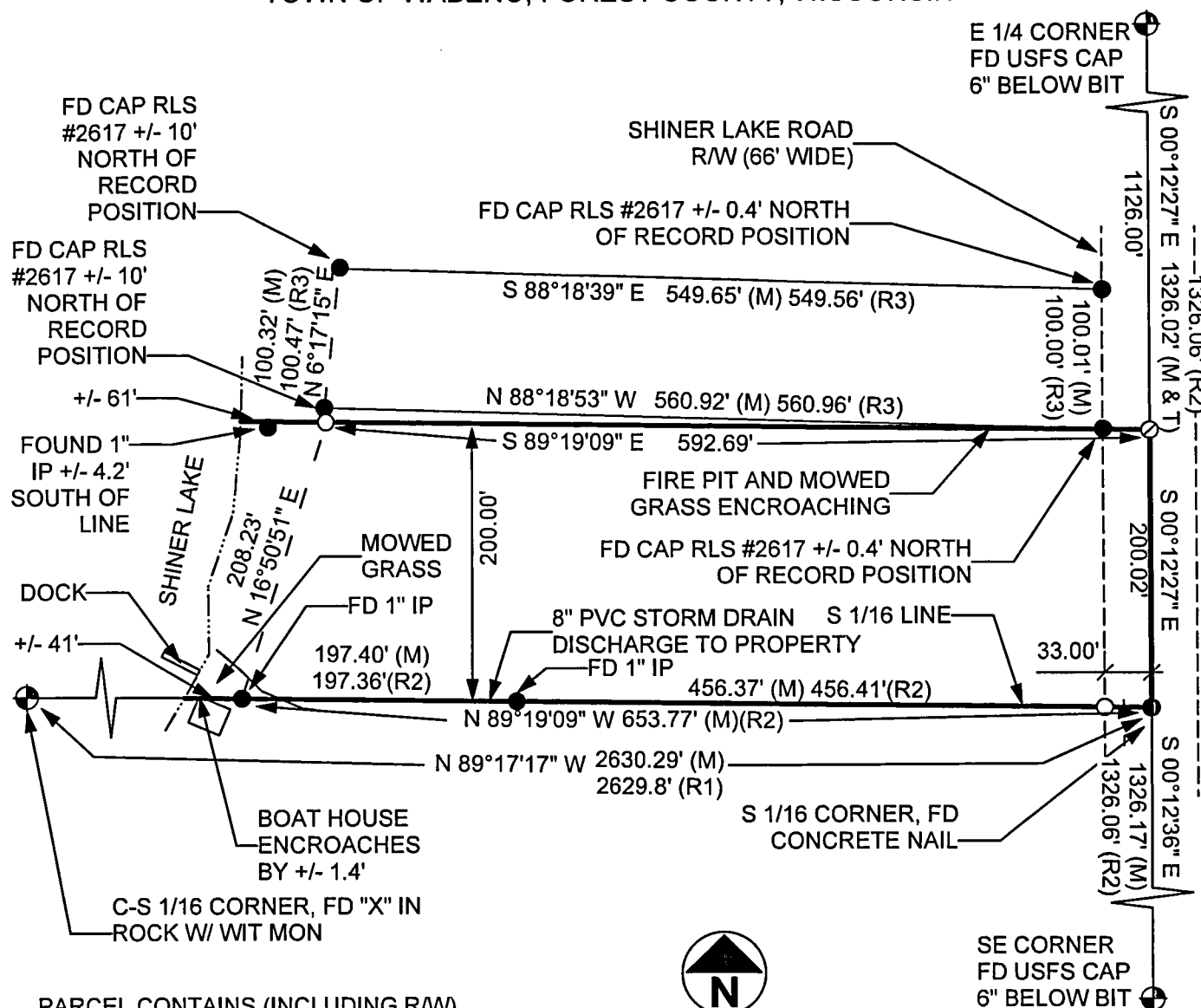


FOREST CO SURVEYOR

FILE # 34529-2030907

DATE _____ BY **PLAT OF SURVEY**

THE SOUTH 200' OF THE NE 1/4 OF THE SE 1/4
SECTION 29, T34N, R15E,
TOWN OF WABENO, FOREST COUNTY, WISCONSIN



PARCEL CONTAINS (INCLUDING R/W)
+/- 3.0 ACRES TO WATERS EDGE
+/- 2.86 ACRES TO MEANDER LINE

(R1) = RECORD, USFS PLAT OF SURVEY
(R2) = RECORD, 2008 SURVEY RLS #00973
(R3) = RECORD, 2012 SURVEY RLS #2617

I HEREBY CERTIFY ON BEHALF OF MOUNTAIN ENGINEERING, INC. THAT THE SURVEY AND THE ABOVE MAP WERE MADE IN ACCORDANCE WITH THE ACCEPTABLE PROFESSIONAL STANDARDS IN ACCORDANCE WITH APPLICABLE SECTIONS OF CHAPTER AE-7 OF WISCONSIN ADMINISTRATION CODE AND THAT THE INFORMATION CONTAINED THEREON IS TO THE BEST OF MY KNOWLEDGE, INFORMATION AND BELIEF, A TRUE AND ACCURATE REPRESENTATION THEREOF.

ZACHARY J. STEVENS, RLS 2467-008

NOTE: THE REST OF THE PARCEL IN THE NE 1/4 X SE 1/4 FALLS IN SHINER LAKE

LEGEND:

- GOVERNMENT CORNER
- SET 1" PIPE WITH SURVEY CAP
- ⊗ SET MAG NAIL
- FOUND CORNER AS NOTED
- (M) = MEASURED THIS SURVEY
- (T) = TOTAL DISTANCE
- FD = FOUND
- IP = IRON PIPE

**MOUNTAIN ENGINEERING, INC.
AND SURVEYING**

N2960 North US Hwy. 2
Iron Mountain, Michigan 49801
Phone 906-779-5762 Fax 906-779-5789
Email mtnengineering@chartermi.net

PREPARED FOR:

FOREST COUNTY POTAWATOMI
PO BOX 340
CRANDON, WI 54520

DATE:
AUGUST 07, 2013

BEARING BASIS:
GPS GRID AZIMUTH

JOB NAME:
FCP 29-34-15 SHINER

PAGE 1 OF 1

THE OWNER AGREES TO INDEMNIFY AND HOLD MOUNTAIN ENGINEERING, INC. HARMLESS FROM ANY DAMAGE, LIABILITY OR COST, INCLUDING ATTORNEY'S FEES AND COST OF DEFENSE ARISING FROM ANY CHANGES OR ALTERATIONS MADE BY ANYONE OTHER THAN MOUNTAIN ENGINEERING, INC., OR FROM ANY REUSE OF THE DRAWINGS AND DATA WITHOUT THE PRIOR WRITTEN CONSENT OF MOUNTAIN ENGINEERING, INC.