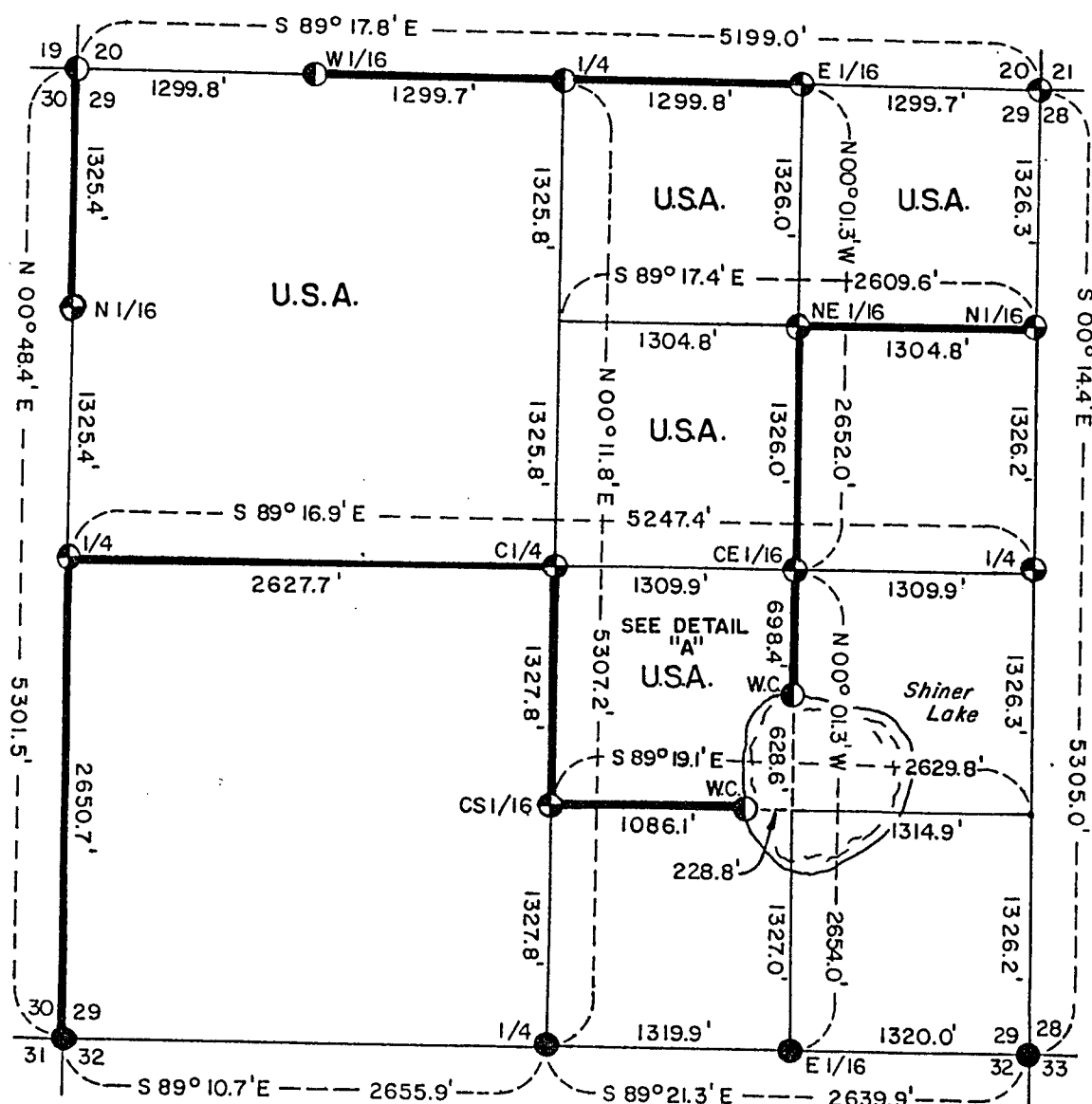


County  
Clerk

DATE \_\_\_\_\_ BY: \_\_\_\_\_

SHEET 1 OF 7

A horizontal scale bar with a black background and white markings. The bar is divided into two equal halves by a central white vertical line. Above the left half, the number '1000' is printed in white. Above the right half, the number '1000' is printed in white. In the center, above the dividing line, the number '0' is printed in white. Below the bar, the words 'SCALE' and 'IN FEET' are printed in white, centered under the left and right halves respectively.



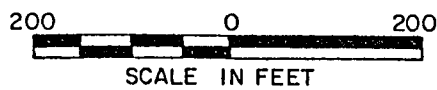
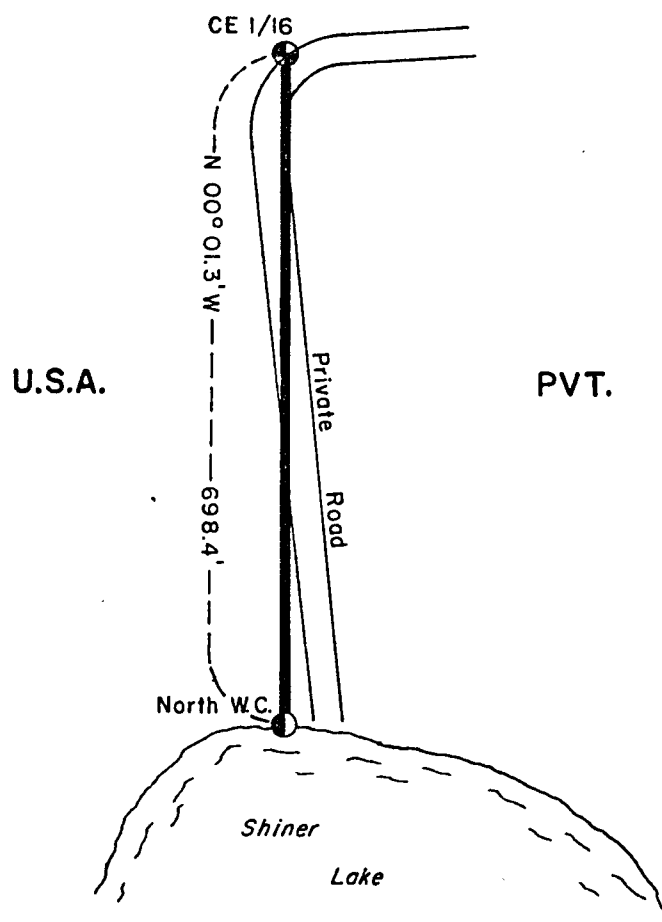
⊕ 2" Diameter Aluminum Monument, 36" Long.  
 ⊙ 2" Diameter Aluminum Monument, 60" Long.  
 ● 2" Diameter Galvanized Iron Pipe, 36" Long.  
 — Marked Boundary Line of U.S. Government Lands.

Conversion Factors:  
Feet to Meters - 0.304801  
Meters to Feet - 3.280833

Stock No. 26273

SHEET 2 OF 7

# DETAIL "A"



Stock No. 26273

Sheet 3 of 7

SURVEY NOTES

This survey was made by the U. S. Department of Agriculture, Forest Service, for the purpose of restoring and establishing corners on the perimeter of Section 29, for establishing subdivisional corners within Section 29, and for locating and marking the boundaries of U. S. Government lands on their perimeter and within Section 29, Township 34 North, Range 15 East, Fourth Principal Meridian, Forest County, Wisconsin.

The U. S. Government lands in this section were acquired from 1935 to 1949.

The original government subdivision survey of this township was made in 1859.

The corner positions recovered, restored, and established by this survey are marked by the monument described in the map legend.

The corner positions established were located to an accuracy of one part in 3000.

The bearings between corner positions are true bearings as determined by solar observations.

The field notes of this survey and a copy of this plat are on file in the Forest Supervisor's Office at Rhinelander, Wisconsin.

CORNERS RECOVERED AND RESTORED1. Section Corner to Sections 29, 30, 31, and 32, T.34N., R.15E.

Corner position recovered and monumented by the Forest Service in 1968. Restoration Certificate filed as Document Number 96935.

Corner References:

Steel Sign Post	•	North	6.13 feet
-----------------	---	-------	-----------

2. Section Corner to Sections 28, 29, 32, and 33, T.34N., R.15E.

Corner position restored by survey by the Forest Service in 1976. Monument 18" below road surface.

Corner References:

Bridge #1 *B.O.		N.70°E.	45.00 feet
Basswood	5"	S.22°E.	21.10 feet
Basswood	9"	N.62°W.	74.60 feet
Bridge #2 *B.O.		N.12°W.	47.90 feet
*Bearing Object			

3. Section Corner to Sections 19, 20, 29, and 30, T.34N., R.15E.

Corner position restored from remains of original bearing trees and post point.

Corner References:

Black Spruce	6"	N.19°E.	20.30 feet
Cedar	6"	S.48°E.	21.51 feet
Black Spruce	6"	S.6°E.	9.89 feet
Black Spruce	6"	N.67°W.	17.55 feet
Steel Sign Post		North	4.40 feet

## Stock No. 26273

Sheet 4 of 7

4. Section Corner to Sections 20, 21, 28, and 29, T.34N., R.15E.

Corner position restored by double proportionate measure from section corners in all four directions. Monument below road surface.

Corner References:

Red Pine	5"	N.29°E.	136.50 feet
Elm	14"	N.62°E.	85.14 feet
Pwr. Pole #3514-28W25		S.47°E.	45.55 feet
Steel Sign Post		North	11.30 feet

5. Quarter Corner to Sections 29 and 32.

Corner position restored by using centerline of Elliot Road for latitude and distance from northeast section corner east and stream 2.0 chains west for longitude. This position falls at centerline of the Elliot Road and fence north.

Corner References:

White Ash	9"	N.3°E.	51.40 feet
Twin Rock Elm	11"	S.52°E.	82.70 feet
Sugar Maple	10"	S.11°W.	39.50 feet

6. Quarter Corner to Sections 28 and 29.

Corner position restored by single proportionate measurement between the northeast and southeast corners of Section 29.

Corner References:

Basswood	12"	S.33°E.	82.75 feet
Balsam	12"	S.56°W.	43.88 feet
Pwr. Pole #3415-29E12		N.29°W.	40.39 feet
Steel Sign Post		West	12.80 feet

7. Quarter Corner to Sections 20 and 29.

Corner position restored by single proportionate measurement between the northwest and northeast corners of Section 29.

Corner References:

Cedar	6"	East	16.83 feet
Cedar	6"	S.37°E.	9.02 feet
Cedar	8"	S.28°W.	14.61 feet
Steel Sign Post		East	2.30 feet

8. Quarter Corner to Sections 29 and 30.

Corner position restored by single proportionate measurement between the northwest and southwest corners to Section 29.

Corner References:

Cedar	20"	S.76°E.	57.69 feet
White Spruce	9"	S.18°W.	63.17 feet
Black Cherry	5"	N.72°W.	30.03 feet
Steel Sign Post		East	1.70 feet

9. East Sixteenth Corner to Sections 29 and 32.

Corner position established by survey in 1976 by the Forest Service. Monument below road surface.

Corner References:

Basswood	5"	S.10°E.	27.70 feet
Basswood	7"	N.1°E.	39.40 feet

Stock No. 26273

Sheet 5 of 7

CORNERS ESTABLISHED1. Center Quarter Corner to Section 29.

Corner position established at the intersection of straight lines between opposing quarter corners on the perimeter of the section.

Corner References:

Sugar Maple	12"	N.27°E.	19.39 feet
Sugar Maple	15"	S.9°E.	16.11 feet
Sugar Maple	9"	N.35°W.	17.23 feet
Steel Sign Post		South	1.40 feet

2. North Sixteenth Corner to Sections 29 and 30.

Corner position established at midpoint and on line between the west quarter corner and northwest section corner.

Corner References:

Sugar	7"	N.26°E.	12.64 feet
White Ash	12"	S.24°E.	23.29 feet
White Ash	12"	S.24°W.	29.17 feet
Steel Sign Post		North	1.70 feet

3. North Sixteenth Corner to Sections 28 and 29.

Corner position established at midpoint and on line between the east quarter corner and northeast section corner.

Corner References:

Basswood	8"	S.31°W.	76.62 feet
Pwr. Pole #3415-29E16		N.14°W.	64.61 feet
Steel Sign Post		West	1.40 feet

4. Northeast Sixteenth Corner to Section 29.

Corner position established at intersection of the north and east sixteenth line.

Corner References:

Sugar Maple	18"	S.60°E.	17.04 feet
Sugar Maple	8"	S.30°W.	41.85 feet
Sugar Maple	10"	N.20°W.	17.82 feet
Steel Sign Post		South	2.80 feet

5. Center East Sixteenth Corner to Section 29.

Corner position established at midpoint and on line between the center quarter corner and the east quarter corner.

Corner References:

Red Maple	7"	S.74°E.	30.97 feet
Red Maple	10"	S.35°W.	81.26 feet
Yellow Birch	8"	N.12°W.	27.18 feet
Steel Sign Post		North	2.30 feet

Stock No. 26273

Sheet 6 of 7

6. East Sixteenth to Sections 20 and 29.

Corner position established at midpoint and on line between the north quarter and northeast section corner of Section 29.

Corner References:

Sugar	7"	N.30°E.	28.23	feet
Sugar	6"	S.76°E.	17.01	feet
Black Cherry	9"	S.78°W.	20.58	feet
Steel Sign Post		West	1.10	feet

7. West Sixteenth to Sections 20 and 29.

Corner established midpoint and on line between the northwest corner and the north quarter corner of Section 29.

Corner References:

Black Spruce	4"	N.23°E.	75.14	feet
Black Spruce	5"	N.18°W.	85.00	feet
Steel Sign Post		North	1.30	feet

8. Center South Sixteenth to Section 29.

Corner established midpoint and on line between the center quarter corner and the south quarter corner of Section 29. Corner marked with a 6" "X" on large boulder 6" below surface.

Corner References:

2" x 36" Aluminum Monument		North	4.24	feet
Sugar	7"	N.22°E.	11.05	feet
Sugar	10"	S.3°W.	20.06	feet
Sugar	6"	N.88°W.	21.97	feet
Steel Sign Post		North	5.10	feet

9. Southeast Sixteenth to Section 29.

Corner established at the intersection of the south and east one-sixteenth lines of Section 29.

Corner References:

Witness Corner		North	628.60	feet
Spruce	11"	N.22°E.	79.89	feet
Red Maple	12"	S.57°W.	20.06	feet
Red Maple	8"	N.88°W.	39.85	feet
Steel Sign Post		North	4.80	feet

Witness Corner		West	228.80	feet
Red Maple	5"	S.13°E.	30.04	feet
Yellow Birch	18"	S.57°W.	17.05	feet
Red Maple	5"	N.8°W.	34.20	feet
Steel Sign Post		West	1.10	feet

Stock No. 26273

Sheet 7 of 7

SURVEYOR'S AFFIDAVITState of Wisconsin ]  
County of Forest ] SS

I, Milo E. Stefan, Cadastral Surveyor, U. S. Forest Service and a registered surveyor in the State of Wisconsin, hereby certify that I have surveyed and subdivided Section 29, Township 34 North, Range 15 East, Fourth Principal Meridian, State of Wisconsin.

The plat map and the notes herewith are a correct representation of the land surveyed and divided. I have surveyed and subdivided said section in accordance with the rules for survey of the public lands and with the statutes of the State of Wisconsin.

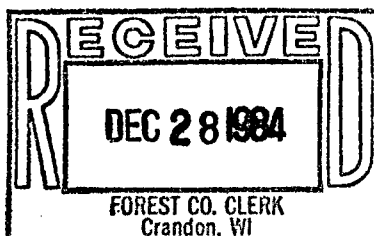


Date of Survey: 1983

*Milo E. Stefan*

Cadastral Surveyor, U. S. Forest Service  
R.L.S., State of Wisconsin  
Certificate S-1558

Plat Ready For Filing

*S. D. Hage*  
District Ranger*Sallie L. Deer*  
Deputy Co. Clerk