

# FOREST CO SURVEYOR

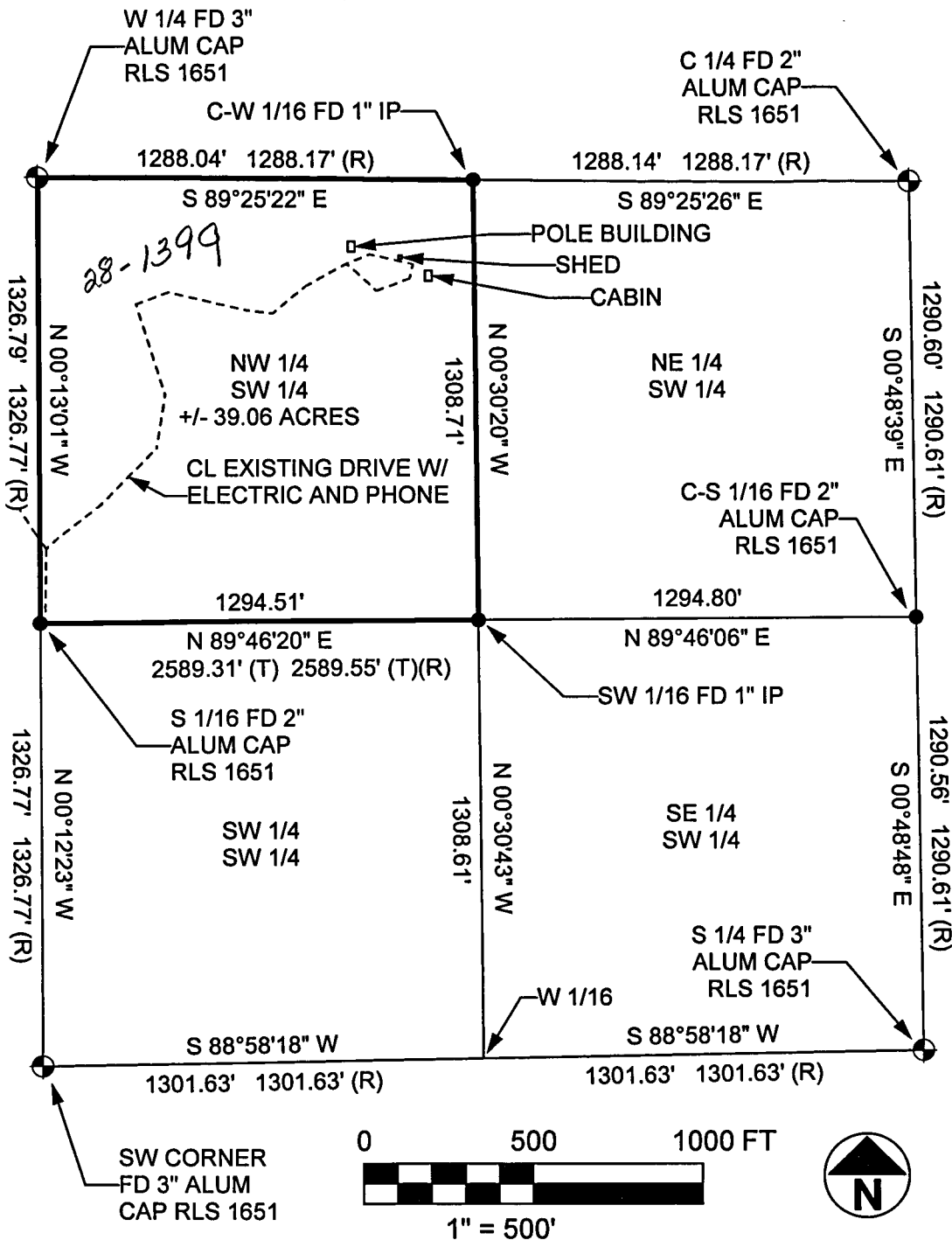
27-34-15

FILE # 341527-20130304

DATE \_\_\_\_\_ BY \_\_\_\_\_

## PLAT OF SURVEY

PART OF THE NW 1/4 OF THE SW 1/4, SECTION 27, T34N, R15E,  
TOWN OF WABENO, FOREST COUNTY, WISCONSIN



I HEREBY CERTIFY ON BEHALF OF MOUNTAIN ENGINEERING, INC. THAT SAID SURVEY AND THE ABOVE MAP WERE MADE IN ACCORDANCE WITH THE ACCEPTABLE PROFESSIONAL STANDARDS IN ACCORDANCE WITH APPLICABLE SECTIONS OF CHAPTER AE-7 OF WISCONSIN ADMINISTRATION CODE AND THAT THE INFORMATION CONTAINED HEREON IS, TO THE BEST OF MY KNOWLEDGE, INFORMATION AND BELIEF, A TRUE AND ACCURATE REPRESENTATION THEREOF.

### LEGEND:

- GOVERNMENT CORNER
- SET 1" PIPE WITH SURVEY CAP
- FOUND CORNER AS NOTED
- (T) = TOTAL DISTANCE
- FD = FOUND
- IP = IRON PIPE
- (R) = RECORD, USFS PLAT OF SURVEY DATED DECEMBER 1993

*Zachary J. Stevens*  
ZACHARY J. STEVENS, RLS 2467-008

### MOUNTAIN ENGINEERING, INC. AND SURVEYING

N2960 North US Hwy. 2  
Iron Mountain, Michigan 49801  
Phone 906-779-5762 Fax 906-779-5789  
Email mtengineering@chartermi.net

### PREPARED FOR:

FOREST COUNTY POTAWATOMI  
PO BOX 340  
CRANDON, WI 54520

DATE:  
MARCH 04, 2013

BEARING BASIS:  
GPS GRID AZIMUTH

JOB NAME:  
FCP BORK

PAGE 1 OF 1

THE OWNER AGREES TO INDEMNIFY AND HOLD MOUNTAIN ENGINEERING, INC. HARMLESS FROM ANY DAMAGE, LIABILITY OR COST, INCLUDING ATTORNEY'S FEES AND COST OF DEFENSE ARISING FROM ANY CHANGES OR ALTERATIONS MADE BY ANYONE OTHER THAN MOUNTAIN ENGINEERING, INC., OR FROM ANY REUSE OF THE DRAWINGS AND DATA WITHOUT THE PRIOR WRITTEN CONSENT OF MOUNTAIN ENGINEERING, INC.