

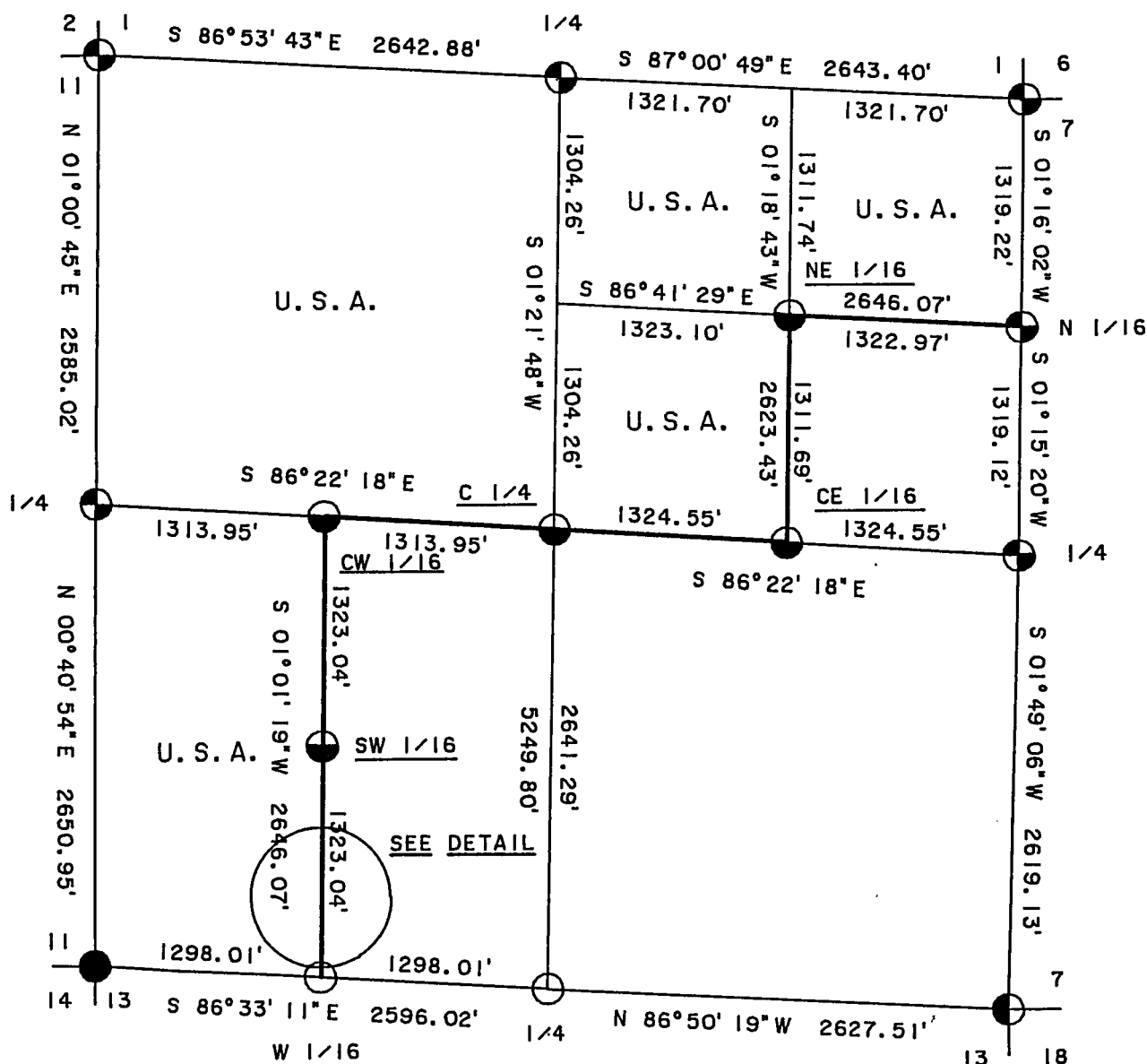
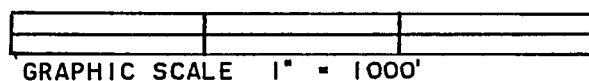
Stock No. 26273

FOREST CO SURVEYOR
FILE # 341512-1993
DATE _____ BY _____

SHEET 1 OF 5

PLAT OF SURVEY
U.S. GOVERNMENT LANDS

BEING THE N. 1/2 AND S.W. 1/4, N.E. 1/4; W. 1/2, S.W. 1/4;
AND THE N.W. 1/4; SECTION 12, TOWNSHIP 34 NORTH,
RANGE 15 EAST, FOURTH PRINCIPAL MERIDIAN,
FOREST COUNTY, WISCONSIN.



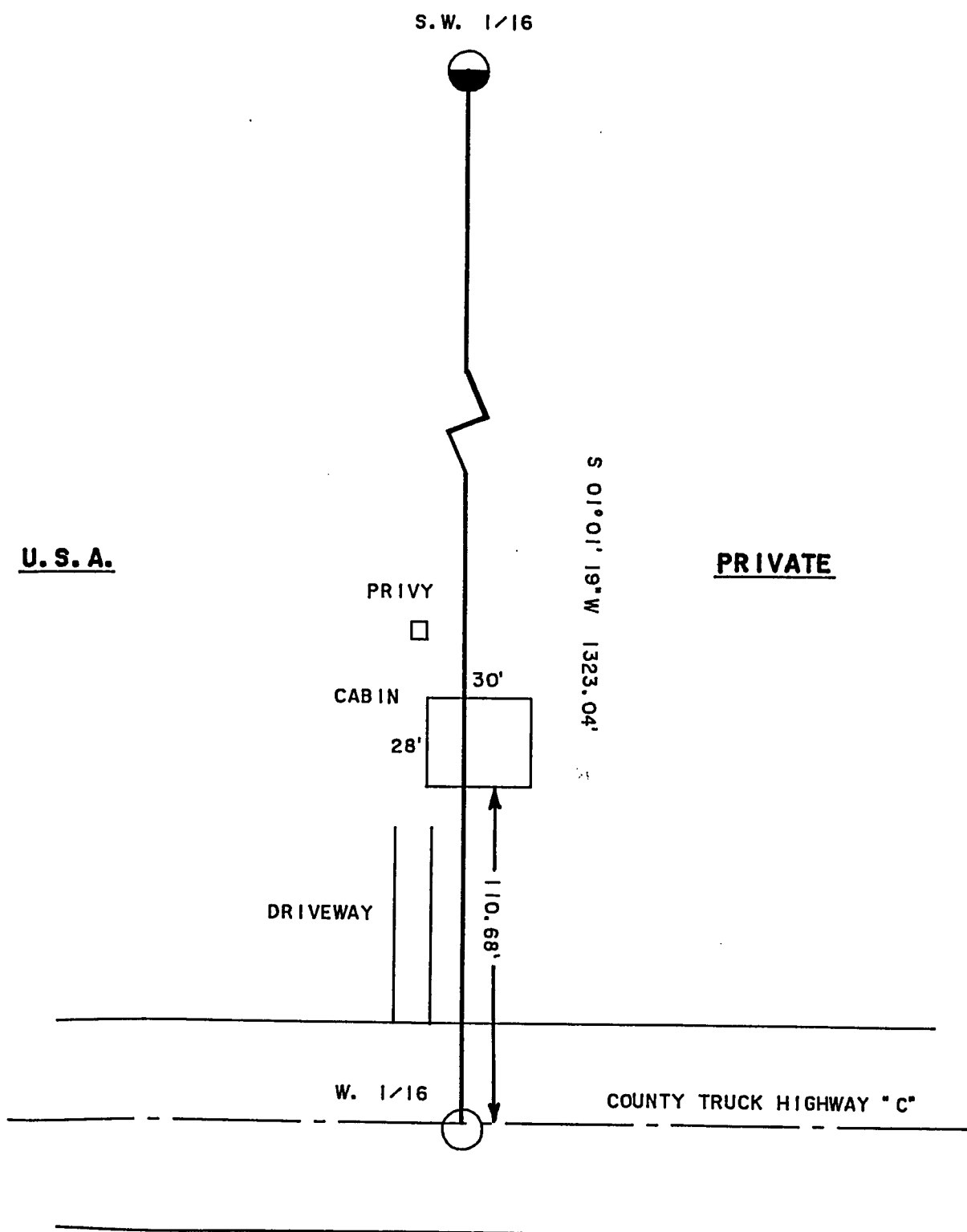
LEGEND

- 2" BRASS CAPPED MONUMENT, FOUND IN PLACE.
- ⊕ 2 1/2" ALUMINUM MONUMENT, FOUND IN PLACE.
- ⊖ RAILROAD SPIKE IN BLACKTOP ROAD, FOUND IN PLACE.
- ⊖ 1" X 36" ALUMINUM MONUMENT, SET THIS SURVEY.
- RAILROAD SPIKE IN BLACKTOP ROAD, SET THIS SURVEY.
- MARKED BOUNDARY LINES OF U.S. GOVERNMENT LANDS.

DETAIL

BEING THE LOCATION OF BUILDINGS ONTO THE S.W. 1/4, S.W. 1/4

SCALE - 1" = 50'



SURVEY NOTES

This survey was made by the U.S. Department of Agriculture, Forest Service, for the purpose of restoring and establishing corners on the perimeter of Section 12, for establishing subdivisional corners within Section 12, and for locating and marking the boundaries of U.S. Government land on their perimeter and within Section 12, Township 34 North, Range 15 East, Fourth Principal Meridian, Forest County, Wisconsin.

The U.S. Government lands in this section were acquired in 1943 and 1993.

The original government subdivision survey of this township was made in 1859.

The corner positions recovered, restored and established by this survey are marked by the monument described in the map legend.

The bearings between corner positions are true bearings as determined by solar observations.

The field notes of this survey and a copy of this plat are on file in the Forest Supervisor's Office at Rhinelander, Wisconsin.

CORNERS RECOVERED OR RESTORED

1. Corner Common to Section 1, 2, 11 and 12.
Corner recovered as set by Milo Stefan (R.L.S.). Certificate on file in Forest County.
2. Corner Common to Section 1, 6, 7, and 12.
Corner recovered as set by Milo Stefan (R.L.S.). Certificate on file in Forest County.
3. Corner Common to Section 7, 12, 13, and 18.
Corner recovered as set by Milo Stefan (R.L.S.). Certificate on file in Forest County.
4. Corner Common to Section 11, 12, 14, and 13.
Corner recovered as set by Jean Resvick (R.L.S.). Certificate on file in Forest County.
5. Quarter Corner Common to Section 1 and 12.
Corner recovered as set by Alan Harrison (R.L.S.). Certificate on file in Forest County.
6. Quarter Corner Common to Section 7 and 12.
Corner recovered as set by Alan Harrison (R.L.S.). Certificate on file in Forest County.
7. Quarter Corner Common to Section 12 and 13.
Corner restored 33 feet south of the intersection of fences from north, east and west. Corner falls 3.5 feet south of centerline of C.T.H. "C".
Corner references:

Witness Corner	2 1/2"x36"	North	33.00 feet.
Power Pole #3415-12R16		N.40°E.	38.68 feet.
Sugar Maple	6"	S.22°E.	36.21 feet.
Sugar Maple	11"	S.56°E.	57.31 feet.
Steel Sign Post		North	34.15 feet.
8. Quarter Corner Common to Section 11 and 12.
Corner recovered as set by Milo Stefan (R.L.S.). Certificate on file in Forest County.

9. North One-Sixteenth Corner to Section 7 and 12.

Corner established by Alan Harrison (R.L.S.) in 1984. Set 4" below the surface of Linse Road.

Corner References:

Sugar Maple	8"	N.64°E.	27.55 feet.
Sugar Maple	7"	S.53°W.	42.19 feet.
Sugar Maple	10"	N.73°W.	38.95 feet.
Steel Sign Post		West	7.79 feet.

CORNERS ESTABLISHED

1. Center Quarter Corner to Section 12.

Corner established at the intersection of the North-South and East-West quarter lines of Section 12.

Corner References:

Sugar Maple	9"	S.39°E.	38.72 feet.
Sugar Maple	10"	N.50°W.	30.56 feet.
Steel Sign Post		West	1.26 feet.

2. West One-Sixteenth Corner to Section 11 and 12.

Corner established midpoint and on line between the Southwest corner and the South quarter corner of Section 12.

Corner References:

Elm	7"	S.39°E.	40.03 feet.
Sugar Maple	10"	S.58°W.	51.31 feet.
Witness Corner	1"x36"	South	35.00 feet.
Steel Sign Post		South	35.73 feet.

3. The Southwest One-Sixteenth Corner to Section 12.

Corner established at the intersetion of the South and West sixteenth lines of Section 12.

Corner References:

Elm	6"	S.39°W.	25.16 feet.
Sugar Maple	5"	N.34°W.	27.14 feet.
Steel Sign Post		North	1.08 feet.

4. Center West One-Sixteenth Corner to Section 12.

We established this corner on line and mid-point between the center quarter corner and the West quarter corner of Section 12.

Corner References:

Balsam	5"	N.45°E.	7.81 feet.
White Spruce	6"	S.29°E.	32.79 feet.
Steel Sign Post		N.W.	0.88 feet.

5. Center East One-Sixteenth Corner to Section 12.

We established this corner on line and mid-point between the center quarter corner and the East quarter corner.

Corner References:

Red Pine	8"	S.60°E.	54.35 feet.
Rock Elm	7"	N.14°E.	49.16 feet.
Black Cherry	6"	N.70°W.	29.62 feet.
Steel Sign Post		N.W.	1.22 feet.

6. North East One-Sixteenth Corner to Section 12.

Corners established at the intersection of the North and East sixteenth lines of Section 12.

Corner References:

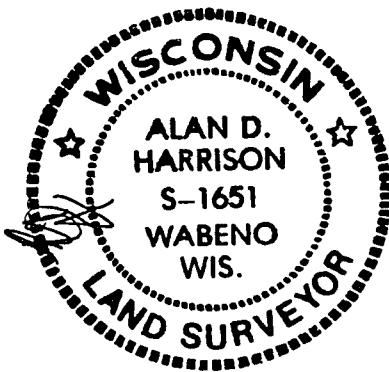
Sugar Maple	5"	N.30°E.	16.52 feet.
Sugar Maple	6"	S.76°W.	30.86 feet.
Steel Sign Post		East	1.13 feet.

SURVEYOR'S AFFIDAVIT


State of Wisconsin]
County of Forest]

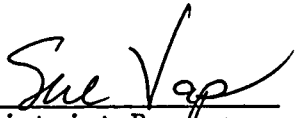
I, Alan D. Harrison, Land Surveyor, U.S.D.A. Forest Service and a Registered Land Surveyor in the State of Wisconsin, do hereby certify that I have surveyed and subdivided Section 12, Township 34 North, Range 15 East, Fourth Principal Meridian, State of Wisconsin.

The plat map and the notes herewith are a correct representation of the land surveyed and divided. I have surveyed and subdivided said section in accordance with the rules for survey of the public lands and with the statutes of the State of Wisconsin.



Date of Survey: 1993


Land Surveyor, USDA, Forest Service
R.L.S., State of Wisconsin
Certificate S-1651

Plat Ready for Filing: 

District Ranger

