



Stock No. 26273

FOREST CO SURVEYOR

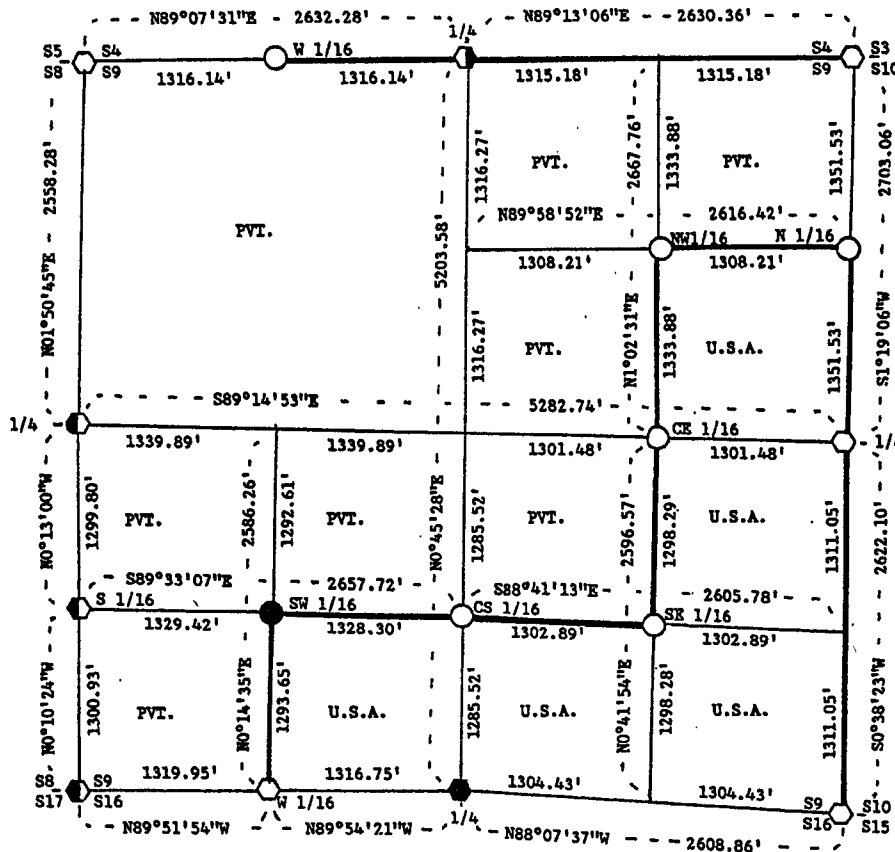
FILE # 341509-19890605

DATE \_\_\_\_\_ BY \_\_\_\_\_

Sheet 1 of 4

**PLAT OF SURVEY FOR CERTIFIED LAND CORNER  
RESTORATION AND ESTABLISHMENT  
OF U.S. GOVERNMENT LAND**

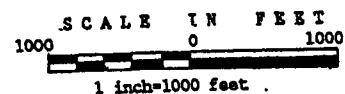
BEING THE CORNERS FOR THE SE 1/4 OF THE NW 1/4, THE NE 1/4 OF THE SE 1/4.  
THE SOUTH 1/2 OF THE SE 1/4 AND THE SE 1/4 OF THE SW 1/4.  
SECTION 9, T34N, R15E, FOURTH PRINCIPAL MERIDIAN  
FOREST COUNTY, STATE OF WISCONSIN



**L E G E N D**

- Boundary line marked to standard.
- 1" diameter aluminum pipe monument, 36 inches long with an aluminum cap stamped to identify the corner.
- 1" diameter aluminum pipe monument, 60 inches long with an aluminum cap stamped to identify the corner.
- ◻ 2 1/2" diameter aluminum pipe monument, 36 inches long with an aluminum cap stamped to identify the corner.
- ◼ 2 1/2" diameter aluminum pipe monument, 60 inches long with an aluminum cap stamped to identify the corner.
- ◆ Forest County Monument.
- ◆ 2" diameter galvanized wrought iron pipe, 5 ft. long, filled with concrete, flanged at the bottom, with a brass tablet stamped to identify the corner.

NOTE: Bearings are referenced to solar observations.



# SURVEY NOTES

This survey was made by John C. Schulke, a Registered Land Surveyor in the State of Wisconsin, for the U.S. Department of Agriculture, Forest Service. The purpose of the survey was for recovery, establishing, marking and perpetuating the corners and boundary lines of the U.S. Government Land on the perimeter of Section 9, Township 34 North, Range 15 East, Fourth Principal Meridian, Forest County, Wisconsin.

The Original Government Subdivision survey of this township was done by James McBride in 1859. In 1913, N. H. Smith surveyed Section 9.

The bearings between corner positions are true bearings as determined by reference to solar observations. The accuracy of this survey exceeds the State requirement for closure of 1 in 3,000. Corners recovered or established by this survey are marked as described in the map legend. Each monumented corner is referenced to blazed, scribed, painted and tagged bearing trees. Tie bearings are magnetic, and not corrected for declination.

## CORNERS RECOVERED AND RESTORED

1. Section Corner Common To Sections 4, 5, 8 and 9.  
Corner monument recovered in place and as described on the U.S. Public Land Survey Monument Record form filed in the Forest County Register of Deed's Office, Document #135395, in April 1988 by Alan Harrison (RLS-1651).
2. Quarter Corner Between Sections 4 and 9.  
Corner monument recovered in place and as described on the U.S. Public Land Survey Monument Record form filed in the Forest County Register of Deed's Office, Document #136611, in Dec. 1988 by John Schulke (RLS-1665).
3. Section Corner Common To Sections 3, 4, 9 and 10.  
Corner monument recovered in place and as described on the U.S. Public Land Survey Monument Record form filed in the Forest County Register of Deed's Office, Document #127083, in Dec. 1984 by Milo Stefan (RLS-1558).
4. Quarter Corner Between Sections 9 and 10.  
Corner monument recovered in place and as described on the U.S. Public Land Survey Monument Record form filed in the Forest County Register of Deed's Office, Document #127086, in 1984 by Milo Stefan (RLS-1558).
5. Section Corner Common To Sections 9, 10, 15 and 16.  
Corner monument recovered in place and as described on the U.S. Public Land Survey Monument Record form filed in the Forest County Register of Deed's Office, Document #127090, in 1984 by Milo Stefan (RLS-1558).
6. Quarter Corner Between Sections 9 and 16.  
Corner monument recovered in place and as described on the U.S. Public Land Survey Monument Record form filed in the Forest County Register of Deed's Office, Document #127089, in 1984 by Milo Stefan (RLS-1558).
7. Section Corner Common To Sections 8, 9, 16 and 17.  
Corner monument recovered in place and as described on the Plat of Survey sheets filed in the Forest County Clerk's Office, in 1982 by Milo Stefan (RLS-1558).
8. Quarter Corner Between Sections 8 and 9.  
Corner monument recovered in place and as described on the Certified Land Corner Restoration form filed in the Forest County Register of Deed's Office, Document #109759, in 1976 by Paul N. Smith (RLS-1125).

9. West Sixteenth Corner Between Sections 4 and 9.  
Corner monument recovered in place and as described on the Plat of Survey sheets (sheet 3 of 4) filed in the Forest County Clerk's Office in 1989 by John Schulke (RLS-1665).
10. West Sixteenth Corner Between Sections 9 and 16.  
Corner monument recovered in place and as described on the Plat of Survey sheets (sheet 5 of 7) filed in the Forest County Clerk's Office, in 1982 by Milo Stefan (RLS-1558).
11. South Sixteenth Corner Between Sections 8 and 9.  
Corner monument recovered in place and as described on the Certified Land Corner Restoration form filed in the Forest County Register of Deed's Office, Document #109758, in 1976 by Paul N. Smith (RLS-1125).

CORNER ESTABLISHED

1. Southwest Sixteenth Corner Of Section 9.  
Corner position is established at the intersection of a straight lines between opposing sixteenth corners on the perimeter of the Southwest Quarter of Section 9. Witness monument is North 11.8 feet from the corner  
  
Witness monument references:  

Cedar	7"	N21°E	61.61 feet
Creek		South	9.0 feet
Steel sign post		East	0.9 feet
2. Center South Sixteenth Corner Of Section 9.  
Corner position is established at the midpoint and on line between the South Quarter corner and the Center Quarter corner of Section 9. Monument placed in a mound of stones.  
  
Corner references:  

Maple	6"	S77°W	25.66 feet
Clump of Maple	6"	N54°W	15.71 feet
Steel sign post		East	0.9 feet
3. Southeast Sixteenth Corner Of Section 9.  
Corner position is established at the intersection of a straight lines between opposing sixteenth corners on the perimeter of the Southeast Quarter of Section 9. Monument placed in a mound of stones.  
  
Corner references:  

Maple	4"	N65°E	13.39 feet
Maple	5"	S08°W	18.53 feet
Steel sign post		North	1.1 feet
4. Center East Sixteenth Corner Of Section 9.  
Corner position is established at the midpoint and on line between the East Quarter corner and the Center Quarter corner of Section 9. Monument placed in a mound of stones.  
  
Corner references:  

Twin Maple	7"	N30°E	10.63 feet
Twin Maple	5"	S43°E	12.90 feet
Steel sign post		South	1.1 feet

5. Northeast Sixteenth Corner Of Section 9.

Corner position is established at the intersection of a straight lines between opposing sixteenth corners on the perimeter of the Northeast Quarter of Section 9.

Corner references:

Maple	6"	N45°E	53.89 feet
Twin Brasswood	16"	S68°E	53.75 feet
Steel sign post		South	0.8 feet

6. North Sixteenth Corner Between Sections 9 and 10.

Corner position is established at the midpoint and on line between the East Quarter corner and the Northeast Section corner of Section 9.

Corner references:

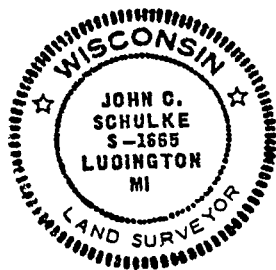
Maple	7"	S53°W	23.70 feet
Maple	9"	N28°W	20.12 feet
Steel sign post		West	1.2 feet

SURVEYOR'S AFFIDAVIT

State of Wisconsin)  
County of Forest )<sup>ss</sup>

I, John C. Schulke, a Cadastral Surveyor, and a Registered Land Surveyor in the State of Wisconsin, hereby certify that I have surveyed and subdivided Section 9, Township 34 North, Range 15 East, Fourth Principal Meridian, State of Wisconsin.

The plat and survey notes herewith are a correct representation of the land surveyed and subdivided. I have surveyed and subdivided said section in accordance with the rules for the survey of the public lands and with the statutes of the State of Wisconsin.



John C. Schulke  
4604 So. Pere Marquette Rd.  
Ludington, MI 49431  
R.L.S. State of Wisconsin  
Date of Survey 1989  
Certificate S-1665

*John C. Schulke*  
*June 5th, 1989*

Plat ready for filing:

*[Signature]*  
District Ranger

