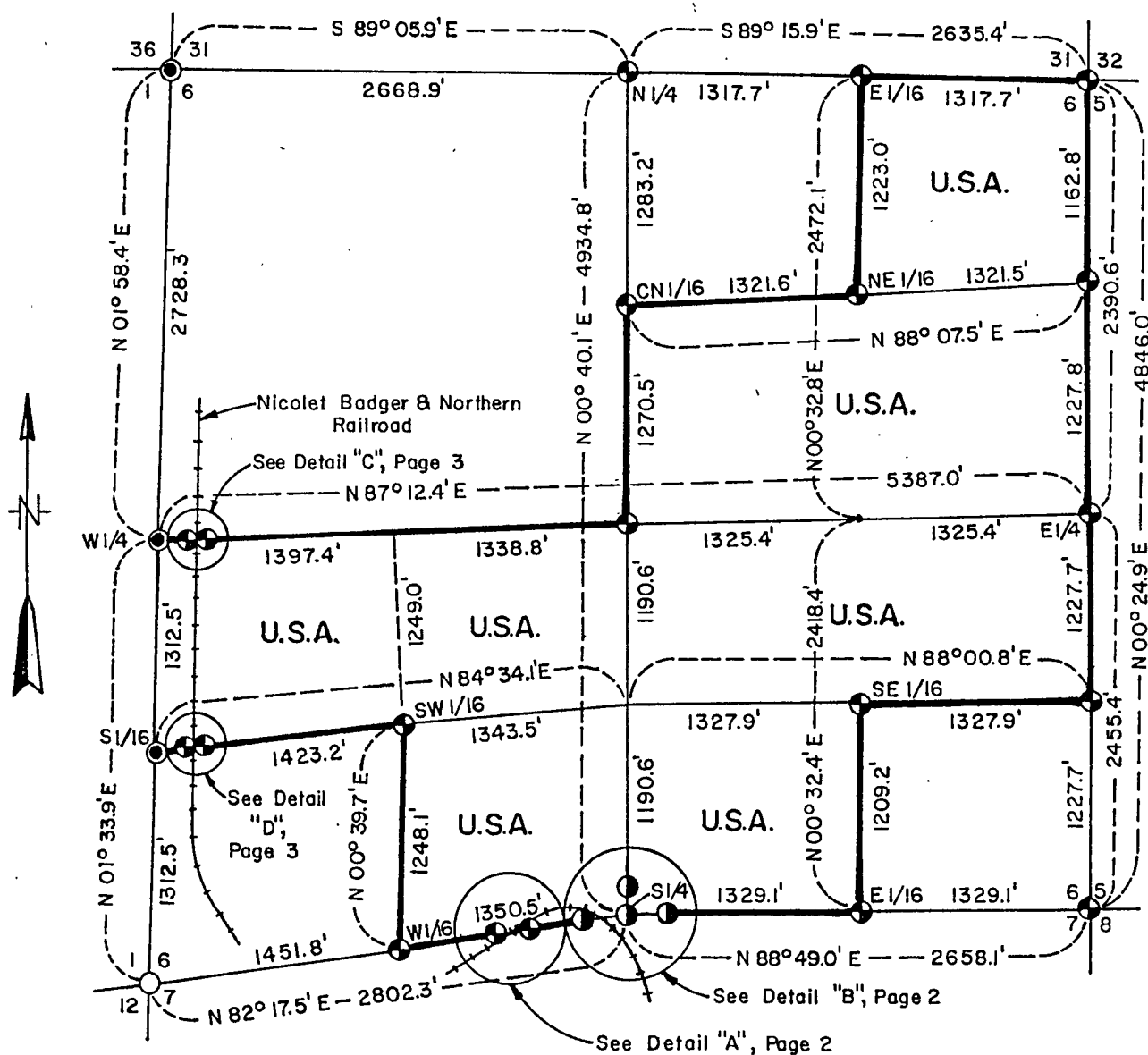
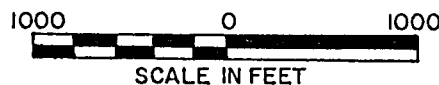


Township 34 North, Range 15 East, Fourth Principal Meridian  
FOREST COUNTY, WISCONSIN



- 2" Diameter Aluminum Monument 30" Long.
- ⊙ 2" Diameter Aluminum Monument 36" Long.
- 2" Diameter Aluminum Monument 60" Long.
- ⊙ R.R. Spike in Highway Referenced by 2" Diameter Aluminum Monument 30" Long.
- Boundary Lines Marked and Posted.

**Conversion Factors:**  
 Feet to Meters - 0.304801  
 Meters to Feet - 3.28033

SHEET 2 of 9

Section 6  
U.S.A.

Section 7

Nicolet Badger & Northern Railroad

To PC.#7

See Detail "B"

PC.#6

PC.#5

W 1/16

R.O.W.

R.O.W.

100

100

0

SCALE IN FEET

387.2'

157.0'

314.0'

157.0'

450.4'

N 82° 17.5' E

N 63° 43.3' E

Section 6 U.S.A.

Section 7

Nicolet Badger & Northern Railroad

Curve Data -  $\phi$

$\Delta = 180^\circ$

$R = 995.37'$

Arc Length = 3001.38'

Chord = 1910.74'

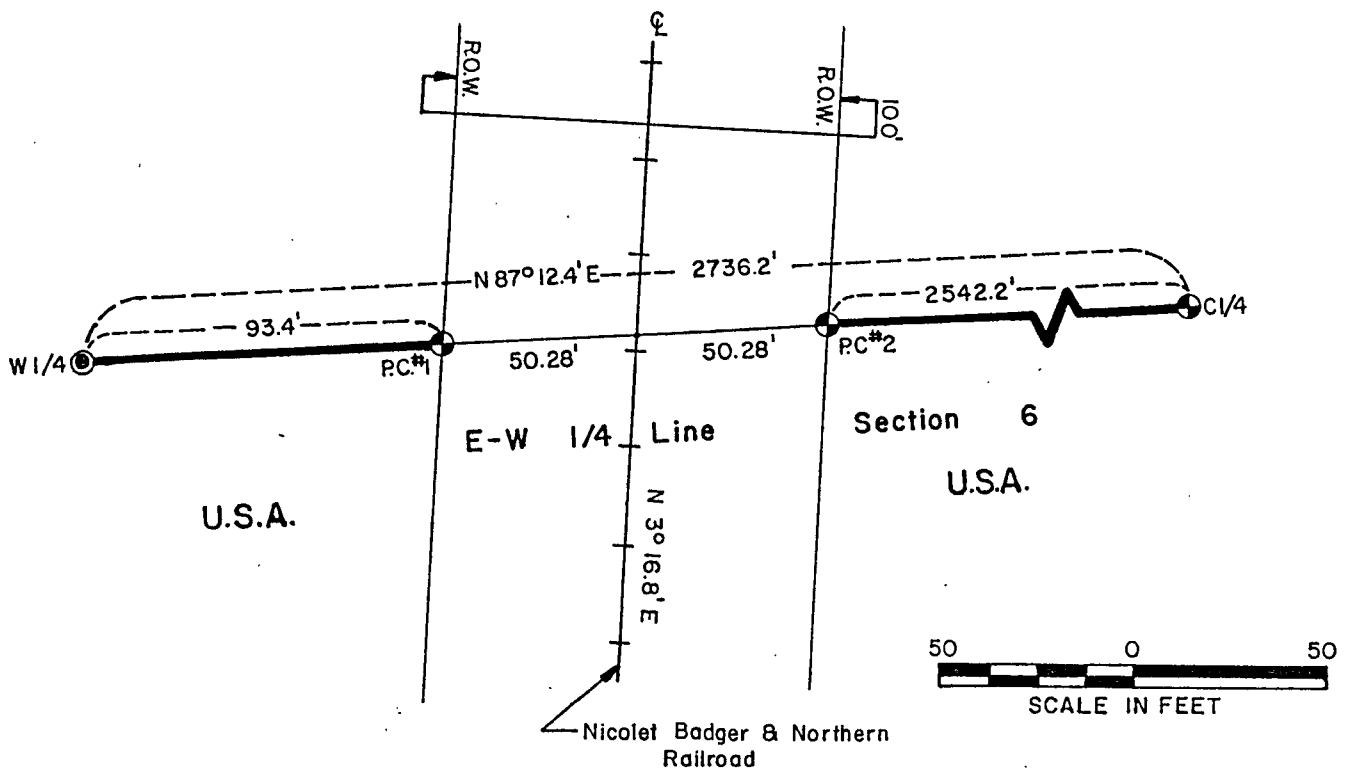
Scale: 100 0 100

SCALE IN FEET

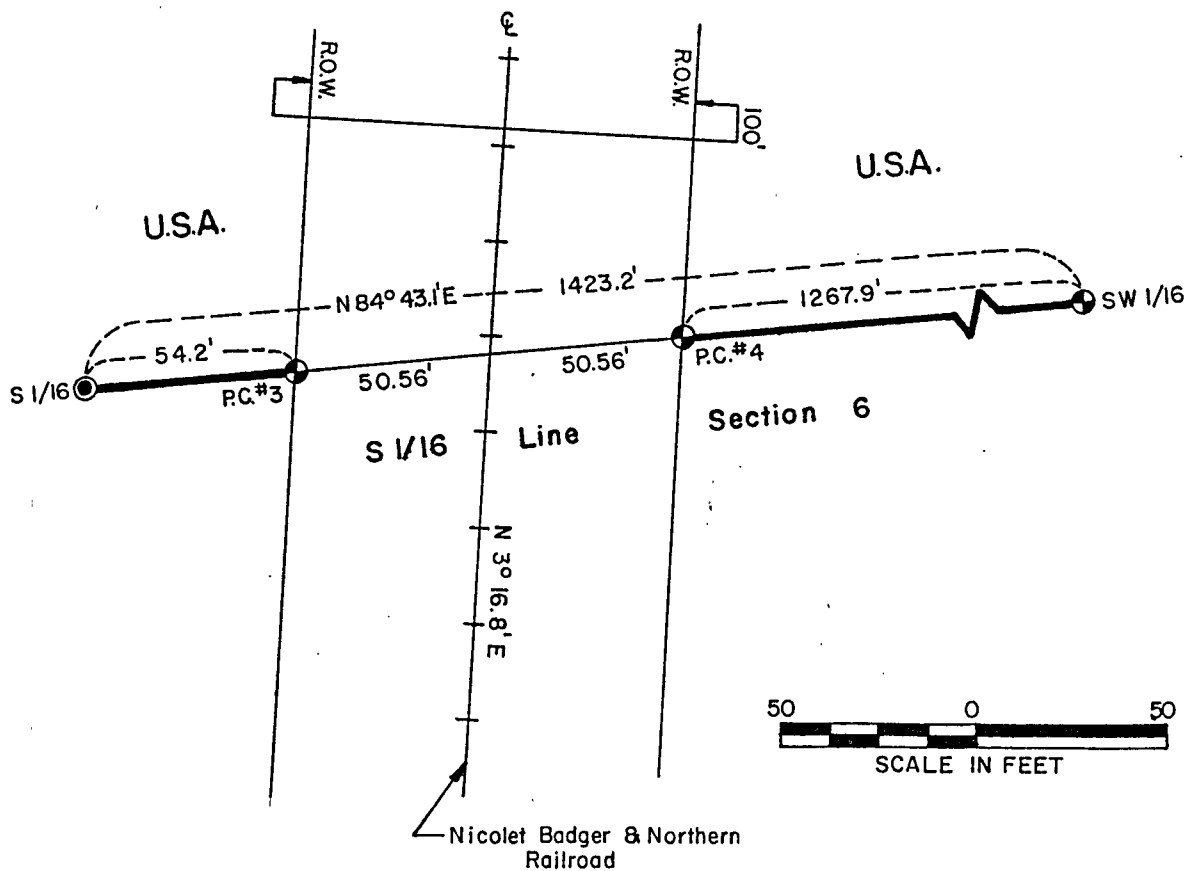
Stock No. 26273

SHEET 3 of 9

# DETAIL "C" RAILROAD RIGHT-OF-WAY



# DETAIL "D" RAILROAD RIGHT-OF-WAY



Stock No. 26273

Sheet 4 of 9

SURVEY NOTES

This survey was made by the U. S. Department of Agriculture, Forest Service, for the purpose of restoring and establishing corners on the perimeter of Section 6, for establishing subdivisional corners within Section 6, and for locating and marking the boundaries of U. S. Government lands on their perimeter and within Section 6, Township 34 North, Range 15 East, Fourth Principal Meridian, Forest County, Wisconsin.

The U. S. Government lands in this section were acquired in 1935, 1938, and 1953.

The original government subdivision survey of this township was made in 1857 and 1859. Nathan Smith surveyed the west side of this section in 1905, 1907, and 1924.

The corner positions recovered, restored, and established by this survey are marked by the monument described in the map legend.

The corner positions established were located to an accuracy of one part in 3000.

The bearings between corner positions are true bearings as determined by solar observations.

The field notes of this survey and a copy of this plat are on file in the Forest Supervisor's Office at Rhinelander, Wisconsin.

CORNERS RECOVERED AND RESTORED1. Section Corner to Sections 1-6-7-12, T.34N., R.14-15E.

Corner position restored by extension of the centerline of State Highway #32 southerly, as per Smith's surveys from one mile north.

Corner References:

Spruce	7"	N.33°W.	197.98 feet
Steel Sign Post		Northeast	1.9 feet
Steel Sign Post		Southwest	1.3 feet
"X" North		N.30°E.	215.45 feet
"X" South		N.49°E.	168.83 feet

"X" is on north and south concrete bridge abutments.

2. Section Corner to Sections 1-36-31-6, T.34-35N., R.14-15E.

Corner position found marked by railroad spike in centerline intersection of State Highway #32 and Trump Lake Road. Call east to centerline of railroad from 1916 railroad plat fits, as does Nathan Smith's early 1900s survey of range line 2 miles north and south.

Corner References:

2" x 30" Aluminum monument reference point, Southwest, 50.00 feet			
Red Pine	9"	S.43°W.	25.52 feet
Red Pine	9"	S.85°W.	15.92 feet
Red Pine	8"	N.62°W.	18.70 feet
Steel Sign Post		Southeast	1.00 feet
2" x 30" Aluminum monument reference point, Southwest, 100.00 feet			
Red Pine	5"	N.85°E.	12.25 feet
Red Pine	6"	S.52°W.	20.15 feet
Red Pine	7"	N.16°W.	19.95 feet
Steel Sign Post		Northwest	2.00 feet

Stock No. 26273

Sheet 5 of 9

3. Section Corner to Sections 6-5-31-32, T.34-35N., R.15E.

Corner position found marked by an iron pipe buried in centerline of town road. Fence lines north and south. Distances west and south fit very well with originals.

Corner References:

Sugar	6"	N.34°E.	58.94	feet
Basswood	10"	S.32°E.	38.19	feet
Sugar	12"	S.22°W.	52.25	feet
6' x 3' Red Granite Rock with chisled "X",		N.32°W.,	48.09	feet
Steel Sign Post		South	26.3	feet

4. Section Corner to Sections 6-5-7-8.

Corner position found marked by post hole next to intersection of north, east, south, and west fence lines. Nathan Smith found corner here in early 1900's.

Corner References:

Sugar	7"	S.73°E.	30.10	feet
Sugar	4"	S.12°E.	13.66	feet
Basswood	12"	N.86°W.	36.51	feet
Rock Elm	8"	N.1°W.	24.95	feet
Steel Sign Post		Southwest	2.1	feet

5. Quarter Corner to Sections 1-6, T.34N., R.14-15E.

Corner position restored from railroad plat of 1916 and Nathan Smith's early 1900's survey of this range line. Corner position marked by railroad spike in centerline of State Highway #32.

Corner References:

2" x 30" Aluminum monument, witness corner,		N.87-12.4°E.,	50.00	feet
Tamarack	3"	N.1°W.	22.23	feet
Aspen	6"	N.12°E.	21.82	feet
Balsam	3"	N.78°W.	20.08	feet
Steel Sign Post		East	2.4	feet

6. Quarter Corner to Sections 6-31, T.34-35N., R.15E.

Corner position found marked by iron pipe in town road, witnessed by Forest County monument, 24.2' south.

Corner References:

Elm	14"	S.39°W.	23.90	feet
Steel Sign Post		South	24.9	feet

7. Quarter Corner to Sections 6-5, T.34N., R.15E.

Corner position restored by single proportionate methods.

Corner References:

White Spruce	4"	S.58°W.	104.23	feet
Basswood	14"	N.52°W.	31.74	feet
Basswood	11"	N.4°W.	42.94	feet
Steel Sign Post		North	0.8	feet

8. Quarter Corner to Sections 6-7, T.34N., R.15E.

Corner position restored at intersection of fence lines, north and east.

Corner References:

Tamarack	12"	N.4°E.	46.18	feet
Property Corner #9		N.0-40.1°E.	33.30	feet
Property Corner #7		S.82-17.5°W.	198.90	feet
Property Corner #8		N.88-49.0°E.	86.50	feet

Stock No. 26273

Sheet 6 of 9

CORNERS ESTABLISHED1. South One-Sixteenth to Sections 1-6, T.34N., R.14-15E.

Corner established midpoint and on line between the southeast corner and the east quarter corner of Section 1. Corner position marked by railroad spike in surface of State Highway #32.

Corner References:

2" x 30" Aluminum monument, witness corner, N.84-34.1°E., 50.00 feet			
Tamarack	7"	N.15°E.	31.69 feet
Aspen	6"	S.62°E.	91.38 feet
Tamarac	10"	N.8°W.	50.40 feet
Steel Sign Post		West	0.8 feet

2. East One-Sixteenth to Sections 6-31, T.34-35N., R.15E.

Corner established midpoint and on line between the northeast corner and the north quarter corner of Section 6.

Corner References:

Basswood	7"	S.23°E.	37.03 feet
Power Pole 5PP10/5-35		N.36°W.	23.14 feet
Steel Sign Post		South	26.8 feet

3. North One-Sixteenth to Sections 6-5, T.34N., R.15E.

Corner established proportionally and on line between the northeast corner and the east quarter corner of Section 6.

Corner References:

Sugar	6"	S.82°E.	13.78 feet
Sugar	6"	S.15°W.	26.47 feet
Sugar	8"	S.82°W.	2.63 feet
Steel Sign Post		North	1.0 feet

4. South One-Sixteenth to Sections 6-5, T.34N., R.15E.

Corner established midpoint and on line between the southeast corner and the east quarter corner of Section 6.

Corner References:

Basswood	8"	N.16°E.	31.55 feet
Sugar	10"	S.36°W.	13.68 feet
Sugar	6"	S.85°W.	19.63 feet
Steel Sign Post		North	1.6 feet
Steel Sign Post		West	2.6 feet

5. East One-Sixteenth to Sections 6-7, T.34N., R.15E.

Corner established midpoint and on line between the southeast corner and the south quarter corner of Section 6.

Corner References:

Aspen	6"	N.83°E.	34.65 feet
White Birch	4"	S.3°E.	73.08 feet
Aspen	5"	N.56°W.	35.04 feet
Steel Sign Post		West	2.6 feet

6. West One-Sixteenth to Sections 6-7, T.34N., R.15E.

Corner established proportionally and on line between the southwest corner and the south quarter corner of Section 6.

Corner References:

Balsam	4"	N.44°E.	36.42 feet
Balsam	5"	S.49°E.	21.53 feet
Spruce	4"	S.80°W.	46.27 feet
Steel Sign Post		North	1.8 feet

Stock No. 26273

Sheet 7 of 9

7. Center North One-Sixteenth to Section 6, T.34N., R.15E.

Corner established proportionally and on line between the center quarter corner and the north quarter corner of Section 6.

Corner References:

Red Pine	6"	N.2 <sup>0</sup> E.	115.60	feet
Red Pine	4"	N.31 <sup>0</sup> E.	70.70	feet
Blue Spruce	3"	S.64 <sup>0</sup> E.	27.59	feet
Steel Sign Post		South	0.9	feet

8. Northeast One-Sixteenth to Section 6, T.34N., R.15E.

Corner established at the intersection of the north and east one-sixteenth lines of Section 6.

Corner References:

Elm	16"	S.1 <sup>0</sup> E.	18.33	feet
Elm	16"	S.82 <sup>0</sup> W.	50.50	feet
Aspen	7"	N.63 <sup>0</sup> W.	16.73	feet
Steel Sign Post		North	1.8	feet

9. Southeast One-Sixteenth to Section 6, T.34N., R.15E.

Corner established at the intersection of the south and east one-sixteenth lines of Section 6.

Corner References:

Sugar	7"	N.65 <sup>0</sup> E.	23.89	feet
Sugar	4"	S.25 <sup>0</sup> W.	17.42	feet
Sugar	6"	N.25 <sup>0</sup> W.	3.16	feet
Steel Sign Post		East	1.2	feet

10. Southwest One-Sixteenth to Section 6, T.34N., R.15E.

Corner established at the intersection of the south and west one-sixteenth lines of Section 6.

Corner References:

Sugar	7"	N.46 <sup>0</sup> E.	30.29	feet
Sugar	8"	S.14 <sup>0</sup> W.	40.28	feet
Sugar	6"	N.12 <sup>0</sup> W.	26.36	feet
Steel Sign Post		South	2.3	feet

11. Property Corner No. 1, Section 6, T.34N., R.15E.

Corner established at the intersection of the east-west quarter line and the west right-of-way of the NB&N Railroad.

Corner References:

Tamarack	7"	N.29 <sup>0</sup> E.	41.88	feet
Aspen	5"	S.68 <sup>0</sup> E.	21.99	feet
Spruce	6"	S.12 <sup>0</sup> W.	46.86	feet
Steel Sign Post		West	1.1	feet

12. Property Corner No. 2, Section 6, T.34N., R.15E.

Corner established at the intersection of the east-west quarter line and the east right-of-way of the NB&N Railroad.

Corner References:

Cedar	11"	N.9 <sup>0</sup> E.	26.10	feet
Cedar	8"	N.59 <sup>0</sup> E.	28.00	feet
Spruce	5"	S.31 <sup>0</sup> E.	9.14	feet
Steel Sign Post		East	7.8	feet

Stock No. 26273

Sheet 8 of 9

13. Property Corner No. 3, Section 6, T.34N., R.15E.

Corner established at the intersection of the south one-sixteenth line and the west right-of-way of the NB&N Railroad.

Corner References:

Tamarack	7"	N.8°E.	30.56 feet
Aspen	6"	S.62°E.	87.43 feet
Tamarac	10"	N.12°W.	50.84 feet
Steel Sign Post		East	0.9 feet

14. Property Corner No. 4, Section 6, T.34N., R.15E.

Corner established at the intersection of the south one-sixteenth line and the east right-of-way of the NB&N Railroad.

Corner References:

Tamarack	7"	N.50°E.	5.52 feet
White Birch	4"	S.10°W.	26.81 feet
Balsam	3"	N.17°W.	11.15 feet
Steel Sign Post		East	0.9 feet

15. Property Corner No. 5, Sections 6-7, T.34N., R.15E.

Corner established at the intersection of the section line to said sections and the west right-of-way to NB&N Railroad, 387.2 feet east of W 1/16 corner.

Corner References:

White Spruce	2"	S.15°E.	17.08 feet
Aspen	7"	S.73°W.	13.08 feet
Aspen	4"	N.11°W.	15.07 feet
Steel Sign Post		West	2.4 feet

16. Property Corner No. 6, Sections 6-7, T.34N., R.15E.

Corner established at the intersection of the section line to said sections and the east right-of-way to NB&N Railroad, 701.2 feet east of W 1/16 corner.

Corner References:

White Spruce	4"	N.72°E.	19.33 feet
Tamarack	12"	S.18°W.	31.78 feet
Tamarack	6"	N.66°W.	5.58 feet
Steel Sign Post		East	2.2 feet

17. Property Corner No. 7, Sections 6-7, T.34N., R.15E.

Corner established at the intersection of the section line of said sections and the west right-of-way of the NB&N Railroad, 198.9 feet west of the south quarter corner to Section 6.

Corner References:

Aspen	5"	N.85°E.	30.89 feet
White Spruce	12"	S.13°W.	58.91 feet
Balm of Gilead	8"	West	11.56 feet
Steel Sign Post		West	4.2 feet

18. Property Corner No. 8, Sections 6-7, T.34N., R.15E.

Corner established at the intersection of the section line of said sections and the east right-of-way of the NB&N Railroad, 86.5 feet east of the south quarter corner to Section 6.

Corner References:

Steel Sign Post		East	11.0 feet
-----------------	--	------	-----------



Stock No. 26273

Sheet 9 of 9

19. Property Corner No. 9, Section 6, T.34N., R.15E.

Corner established at the intersection of the north-south quarter line and the north right-of-way of NB&N Railroad, 33.3 feet north of south quarter corner to Section 6.

Corner References:

Tamarack	12"	N.12°E.	12.99 feet
Black Ash	6"	N.37°W.	26.22 feet
Steel Sign Post		East	3.5 feet

SURVEYOR'S AFFIDAVIT

State of Wisconsin }  
County of Forest } SS

I, Milo E. Stefan, Cadastral Surveyor, U. S. Forest Service and a registered surveyor in the State of Wisconsin, hereby certify that I have surveyed and subdivided Section 6, Township 34 North, Range 15 East, Fourth Principal Meridian, State of Wisconsin.

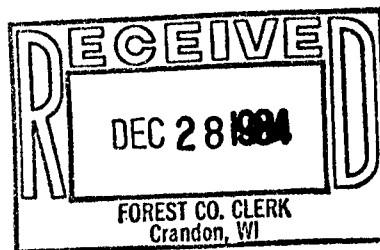
The plat map and the notes herewith are a correct representation of the land surveyed and divided. I have surveyed and subdivided said section in accordance with the rules for survey of the public lands and with the statutes of the State of Wisconsin.



Date of Survey: 1982

Milo E. Stefan  
Cadastral Surveyor, U. S. Forest Service  
R. L. S. State of Wisconsin  
Certificate S-1558

Plat Ready For Filing: Dale B. Staeger  
District Ranger



Sallie L. Deer  
Deputy Co. Clerk