

Stock No. 26273

FOREST CO SURVEYOR

FILE # 341504-1988/017

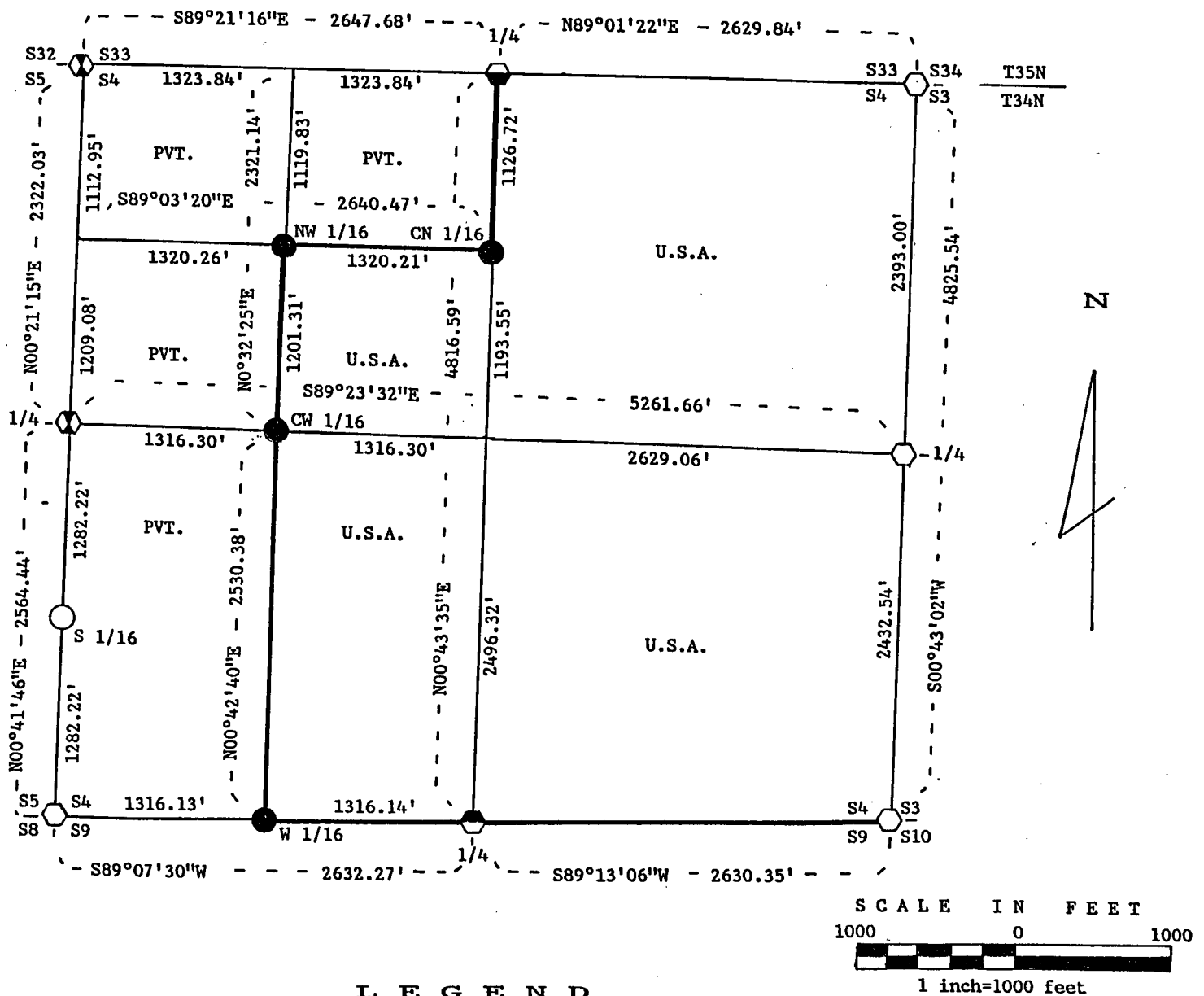
DATE _____ BY _____

1989

Sheet 1 of 4

**PLAT OF SURVEY FOR CERTIFIED LAND CORNER
RESTORATION AND ESTABLISHMENT
OF U.S. GOVERNMENT LAND**

BEING THE CORNERS FOR THE NE 1/4, THE SE 1/4,
THE SE 1/4 OF THE NW 1/4 AND THE E 1/2 OF THE SW 1/4.
SECTION 4, T34N, R15E, FOURTH PRINCIPAL MERIDIAN
FOREST COUNTY, STATE OF WISCONSIN



SURVEY NOTES

This survey was made by John C. Schulke, a Registered Land Surveyor in the State of Wisconsin, for the U.S. Department of Agriculture, Forest Service. The purpose of the survey was for recovery, establishing, marking and perpetuating the corners and boundary lines of the U.S. Government Land on the perimeter and within Section 4, Township 34 North, Range 15 East, Fourth Principal Meridian, Forest County, Wisconsin.

The Original Government Survey of the township boundary was done by Artemas Curtis in 1857. The Original Government Subdivision survey of this township was done by James McBride in 1859.

The bearings between corner positions are true bearings as determined by reference to polaris observations. The accuracy of this survey exceeds the State requirement for closure of 1 in 3,000. Corners recovered or established by this survey are marked as described in the map legend. Each monumented corner is referenced to blazed, scribed, painted and tagged bearing trees. Tie bearings are magnetic, and not corrected for declination.

CORNERS RECOVERED AND RESTORED

1. Section Corner Common to Sections 4, 5, 32 and 33.
Corner monument recovered in place and as described on the U.S. Public Land Survey Monument Record form filed in the Forest County Register of Deed's Office, Document #135393, in April 1988 by Alan Harrison (RLS-1651).

2. Quarter Corner Between Sections 4 and 33.
Corner monument recovered in place with a 2" iron pipe butted up against the monument.

Recovered corner references done in 1973 by J. Resvick:

| | | | |
|-----------------|-----|-------|------------|
| Sugar Maple | 14" | N28°E | 18.80 feet |
| Sugar Maple | 20" | S23°E | 41.41 feet |
| Steel sign post | | West | 1.0 feet |

New corner references:

| | | | |
|-----------------|-----|-------|------------|
| Sugar Maple | 24" | N18°E | 43.18 feet |
| Yellow Birch | 10" | S86°W | 21.40 feet |
| Steel sign post | | South | 1.4 feet |

3. Section Corner Common to Sections 3, 4, 33 and 34.
Recovered bearing tree scribed by N. Smith in 1910. No other evidence found in the area due to heavy bulldozing. Monument is 0.6 feet below the surface of a two track road.

Recovered corner references:

| | | | |
|-----|-----|-------|-----------|
| Elm | 16" | N81°E | 15.8 feet |
|-----|-----|-------|-----------|

Corner references:

| | | | |
|-----------------|-----|-------|------------|
| Sugar Maple | 6" | S46°E | 53.28 feet |
| Hickory | 10" | S39°W | 51.63 feet |
| White Ash | 7" | S87°W | 42.18 feet |
| Sugar Maple | 5" | N65°W | 44.05 feet |
| Steel sign post | | East | 6.4 feet |

4. Quarter Corner Between Sections 3 and 4.
Found no evidence of the original survey corner. Corner position restored by proportionate measurement.

Corner references:

| | | | |
|-----------------|----|-------|------------|
| Sugar Maple | 5" | N67°W | 34.50 feet |
| Sugar Maple | 4" | N20°W | 26.16 feet |
| Red Maple | 5" | S13°E | 34.54 feet |
| Sugar Maple | 3" | S44°W | 23.28 feet |
| Steel sign post | | North | 1.0 feet |

5. Section Corner Common to Sections 3, 4, 9 and 10.
Corner monument recovered in place and as described on a U.S. Public Land Survey Monument Record form filed in the Forest County Register of Deed's Office, Document #127083, in Dec. 1984 by Milo Stefan (RLS-1558).

6. Quarter Corner Between Sections 4 and 9.
Corner monument recovered in place.

Recovered corner references:

| | | | |
|------------------|-----|-------|------------|
| Sugar Maple | 10" | S61°W | 13.32 feet |
| Yellow Birch | 6" | N44°W | 26.41 feet |
| Decayed Basswood | 12" | N24°E | 4.89 feet |
| Wood sign post | | North | 1.4 feet |

New corner references:

| | | | |
|------------------|-----|-------|------------|
| Twin Sugar Maple | 11" | N65°E | 45.76 feet |
| Sugar Maple | 5" | S34°E | 20.06 feet |
| Steel sign post | | West | 2.1 feet |

7. Section Corner Common to Sections 4, 5, 8 and 9.
Corner monument recovered in place and as described on a U.S. Public Land Survey Monument Record form filed in the Forest County Register of Deed's Office, Document #135395, in April 1988 by Alan Harrison (RLS-1651).
8. Quarter Corner Between Sections 4 and 5.
Corner monument recovered in place and as described on a U.S. Public Land Survey Monument Record form filed in the Forest County Register of Deed's Office, Document #135394, in 1988 by Alan Harrison (RLS-1651).

CORNERS ESTABLISHED

1. South Sixteenth Corner Between Sections 4 and 5.
Corner position is established at the midpoint and on line between the West Quarter corner and the Southwest Section corner of Section 4.

Corner references:

| | | | |
|-----------------------------|-----------|-----------|------------|
| chiseled "X" | | | |
| on boulder | 2'X2 1/2' | S73°W | 28.85 feet |
| Witness Corner Mon. | 2 1/2" | N:89°07'W | 33.00 feet |
| Steel sign post by monument | | West | 1.0 feet |

2. West Sixteenth Corner Between Sections 4 and 9.
Corner position is established at the midpoint and on line between the South Quarter corner and the Southwest Section corner of Section 4. Monument is 0.6 feet below the surface of a two track road.

Corner references:

| | | | |
|-----------------|----|-------|------------|
| Sugar Maple | 7" | N54°E | 45.82 feet |
| Sugar Maple | 4" | S33°E | 19.62 feet |
| Steel sign post | | South | 7.9 feet |

3. Center West Sixteenth Corner of Section 4.

Corner position is established at the midpoint and on line between the West Quarter corner and the Center Quarter corner of Section 4. Monument placed in mound of stones.

Corner references:

| | | | |
|-----------------|-----|-------|------------|
| Sugar Maple | 5" | N21°E | 11.78 feet |
| Sugar Maple | 10" | S80°W | 21.57 feet |
| Steel sign post | | South | 1.3 feet |

4. Northwest Sixteenth Corner of Section 4.

Corner position is established at the intersection of a straight lines between opposing sixteenth corners on the perimeter of the Northwest Quarter of Section 4. Monument placed in a mound of stones. Barbed wire fence running East and West is 6 feet South.

Corner references:

| | | | |
|------------------|-----|-------|------------|
| Twin Sugar Maple | 14" | S54°E | 17.03 feet |
| Sugar Maple | 12" | S34°W | 42.17 feet |
| Steel sign post | | East | 1.3 feet |

5. Center North Sixteenth Corner of Section 4.

Corner position is established by proportional measurement on the straight line between the North Quarter corner and the Center Quarter corner of Section 4.

Corner references:

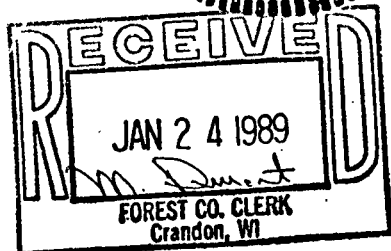
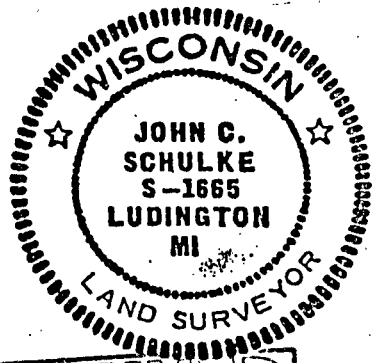
| | | | |
|-------------------|----|-------|------------|
| Sugar Maple | 8" | N06°E | 39.03 feet |
| Sugar Maple | 6" | S64°E | 21.09 feet |
| Steel sign post | | North | 1.5 feet |
| Corner fence post | | N80°W | 5.7 feet |

SURVEYOR'S AFFIDAVIT

State of Wisconsin)
County of Forest)^{ss}

I, John C. Schulke, a Cadastral Surveyor, and a Registered Land Surveyor in the State of Wisconsin, hereby certify that I have surveyed and subdivided Section 4, Township 34 North, Range 15 East, Fourth Principal Meridian, State of Wisconsin.

The plat map and survey notes herewith are a correct representation of the land surveyed and subdivided. I have surveyed and subdivided said section in accordance with the rules for the survey of the public lands and with the statutes of the State of Wisconsin.



John C. Schulke
4604 So. Pere Marquette Rd.
Ludington, MI 49431
R.L.S. State of Wisconsin
Date of Survey 1988
Certificate S-1665

John C. Schulke
Oct. 17th, 1988

Plat ready for filing

Dale Starg
District Ranger